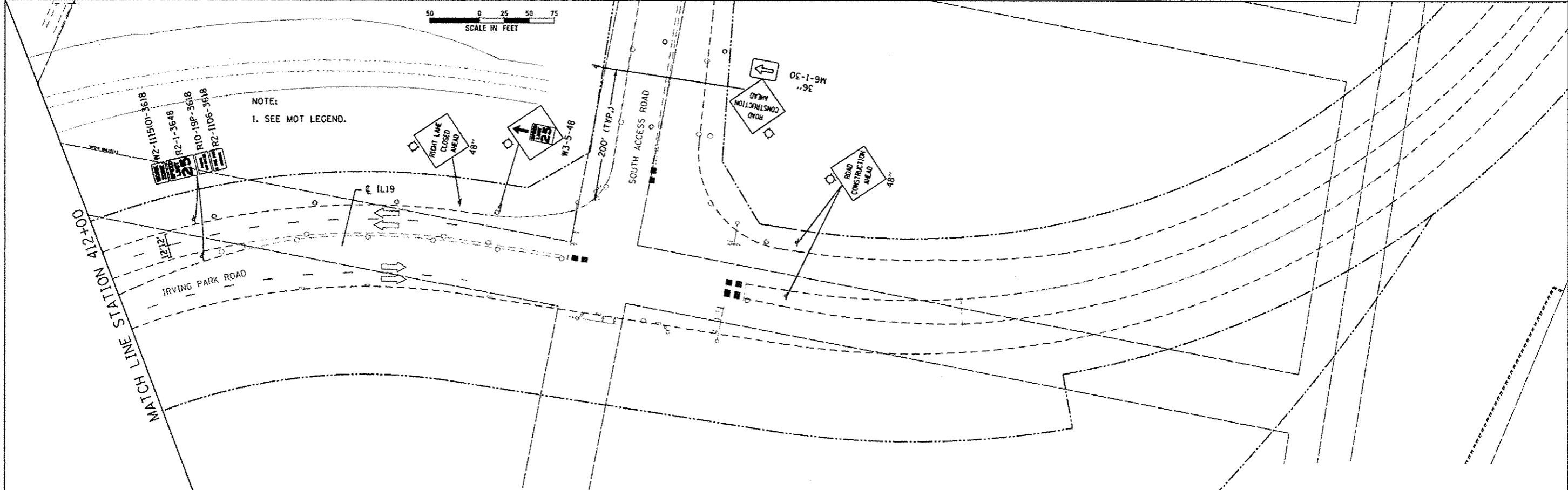
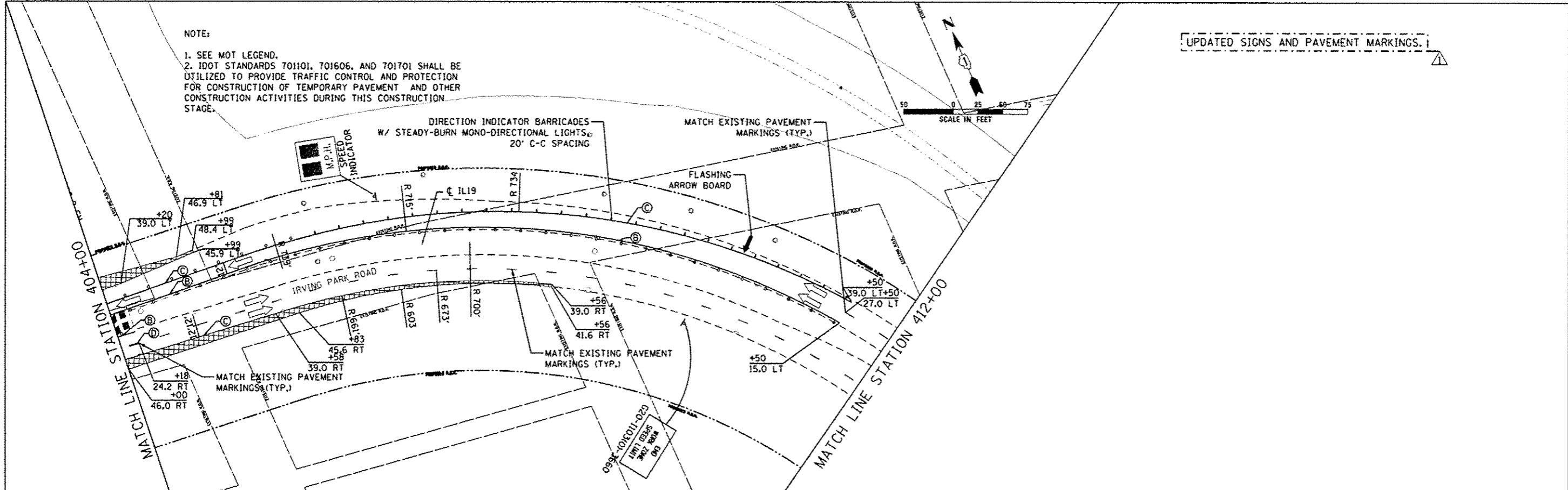


NOTE:
 1. SEE MOT LEGEND.
 2. IDOT STANDARDS 701101, 701606, AND 701701 SHALL BE UTILIZED TO PROVIDE TRAFFIC CONTROL AND PROTECTION FOR CONSTRUCTION OF TEMPORARY PAVEMENT AND OTHER CONSTRUCTION ACTIVITIES DURING THIS CONSTRUCTION STAGE.

UPDATED SIGNS AND PAVEMENT MARKINGS. I



 HDR ENGINEERING, INC.	USER NAME : user	DESIGNED - JJS	REVISED - 12-28-2012 BJJ	STATE OF ILLINOIS DEPARTMENT OF TRANSPORTATION	MAINTENANCE OF TRAFFIC STAGE 1 IL ROUTE 19 (IRVING PARK RD.)	F.A.U. RTE.	SECTION	COUNTY	TOTAL SHEETS	SHEET NO.
	PLOT SCALE = 1/4" = 10'	DRAWN - TT	REVISED -			1321	32VB	DUPAGE	388	56
	PLOT DATE = 12/28/2012	CHECKED - LGP	REVISED -			CONTRACT NO. 60W01				
	DATE - 11-20-2012	DATE - 11-20-2012	REVISED -			ILLINOIS FED. AID PROJECT				
				SCALE: 1" = 50'		SHEET NO. 7 OF 29 SHEETS		STA. 404+00 TO STA. 418+86.10		