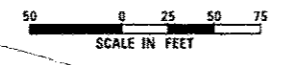
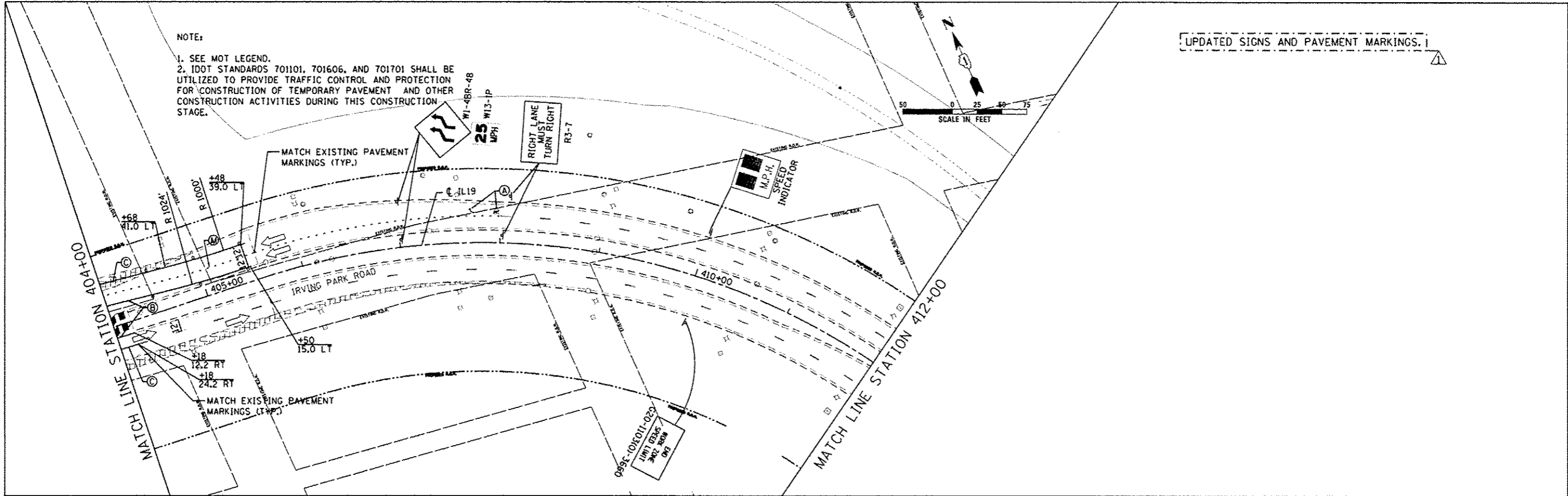
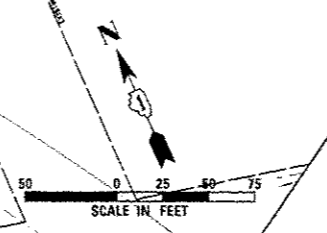
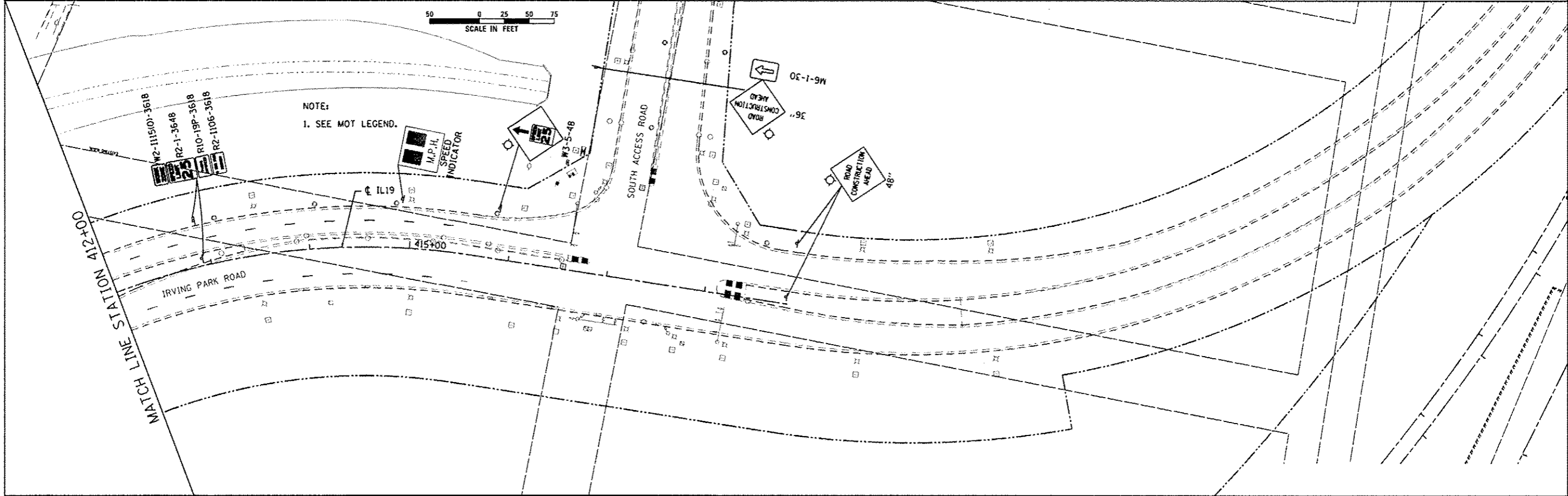


UPDATED SIGNS AND PAVEMENT MARKINGS. I

NOTE:  
 1. SEE MOT LEGEND.  
 2. IDOT STANDARDS 701101, 701606, AND 701701 SHALL BE UTILIZED TO PROVIDE TRAFFIC CONTROL AND PROTECTION FOR CONSTRUCTION OF TEMPORARY PAVEMENT AND OTHER CONSTRUCTION ACTIVITIES DURING THIS CONSTRUCTION STAGE.



NOTE:  
 1. SEE MOT LEGEND.



USER NAME - user	DESIGNED - JJS	REVISED - 12-28-2012 BJJ
PLOT SCALE - #SCALE#	DRAWN - TT	REVISED -
PLOT DATE - 12/28/2012	CHECKED - LGP	REVISED -
	DATE - 11-20-2012	REVISED -

STATE OF ILLINOIS  
 DEPARTMENT OF TRANSPORTATION

MAINTENANCE OF TRAFFIC STAGE 3	
IL ROUTE 19 (IRVING PARK RD.)	
SCALE: 1" = 50'	SHEET NO. 16 OF 29 SHEETS
STA. 404+00	TO STA. 418+06.10

F.A.U. RTE. 1321	SECTION 32VB	COUNTY	TOTAL SHEETS 388	SHEET NO. 65
CONTRACT NO. 60W01			ILLINOIS FED. AID PROJECT	