

STATE OF ILLINOIS
DEPARTMENT OF TRANSPORTATION
DIVISION OF HIGHWAYS

**PROPOSED
HIGHWAY PLANS**

FAU ROUTE 1321 (IL 19 - IRVING PARK RD.) AT YORK RD.
SECTION 32VB (12)

GRADE SEPARATION, RR BRIDGE, RETAINING WALLS
C-91-141-13

F.A.U. RTE.	SECTION	COUNTY	TOTAL SHEETS	SHEET NO.
1321	32VB	DUPAGE	388	1
		ILLINOIS	CONTRACT NO. 60W01	

FOR INDEX OF SHEETS, SEE SHEET NO. 2

FOR LIST OF HIGHWAY STANDARDS, SEE SHEET NO. 3

TRAFFIC DATA

DESIGN DESIGNATION:

IRVING PARK ROAD =
3230 (30) PRINCIPAL ARTERIAL 20.98 (PCC-20)
YORK ROAD =
2880 (30) MINOR ARTERIAL 20.38 (PCC-20)

ADT:

IL ROUTE 19 (EAST) = 37,000
IL ROUTE 19 (WEST) = 30,000
YORK ROAD (NORTH) = 28,000
YORK ROAD (SOUTH) = 23,000

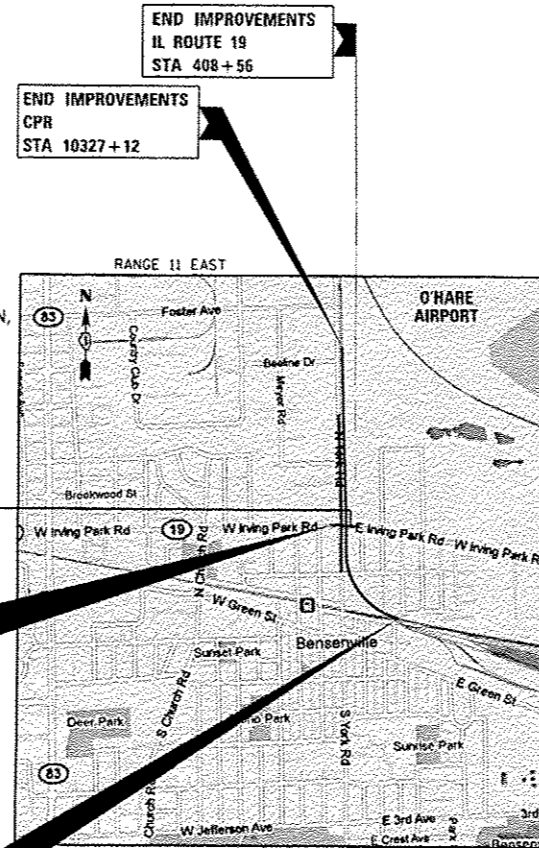
DESIGN SPEED:

IL ROUTE 19 = 40 MPH
YORK ROAD (NORTH) = 45 MPH
YORK ROAD (SOUTH) = 40 MPH



DUPAGE COUNTY

PROJECT LOCATED IN
VILLAGE OF BENSENVILLE
AND CITY OF CHICAGO



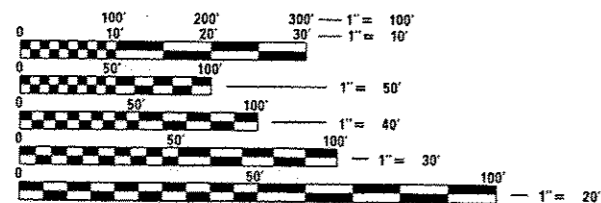
DESCRIPTION OF PROJECT

THIS PROJECT CONSISTS OF BRIDGE CONSTRUCTION, RETAINING WALL CONSTRUCTION, AND ALL INCIDENTAL AND COLLATERAL WORK AS NECESSARY TO COMPLETE THE IMPROVEMENT SHOWN HEREIN AND AS DESCRIBED IN THE SPECIAL PROVISIONS.

FAU ROUTE 1321 UNDER CPR

STRUCTURE NO. 022-0226 (STA. 399+05.57)
TWO SPAN THROUGH PLATE GIRDER BRIDGE

THIS PROJECT WILL REQUIRE, AT A MINIMUM, COORDINATION WITH THE US ARMY CORPS OF ENGINEERS, IEPA, IDNR, AND THE FAA TO OBTAIN VARIOUS PERMITS, INCLUDING, BUT NOT LIMITED TO NPDES, SECTION 404, IDNR FLOODWAY, AND FAA FORM 7460.



FULL SIZE PLANS HAVE BEEN PREPARED USING STANDARD ENGINEERING SCALES. REDUCED SIZED PLANS WILL NOT CONFORM TO STANDARD SCALES. IN MAKING MEASUREMENTS ON REDUCED PLANS, THE ABOVE SCALES MAY BE USED.

J.U.L.I.E. (JOINT UTILITY LOCATION INFORMATION FOR EXCAVATION)
1-800-892-0123 OR 811
C.U.A.N. (CHICAGO UTILITY ALERT NETWORK)
312-744-7000
RAILROAD UTILITY CONTACT TELEPHONE NUMBERS
1-888-625-8702

PROJECT MANAGER - CATHERINE KIBBLE, PE (847) 705-4269
PROJECT ENGINEER - SERIN KELLER, PE (847) 705-4556

CONTRACT NO. 60W01

NOTE: WHEREVER IN THESE PLANS SECTION 32VB IS REFERENCED IT SHALL MEAN 32VB(12).

- BY: Lance Litvack DATE: 11/2/12
HQR ENGINEERING, INC.
DWGS. 1-34
50-26
LICENSE EXPIRES NOV. 30, 2013
- BY: Lance Litvack DATE: 11/2/12
HQR ENGINEERING, INC.
DWGS. 142-180, 185-187, 190-199, 203-238
LICENSE EXPIRES NOV. 30, 2014
- BY: Michael P. Kelly DATE: 11/2/12
HQR ENGINEERING, INC.
DWGS. 35-49, 245-297
LICENSE EXPIRES NOV. 30, 2013
- BY: Nathan Rattien DATE: 11/2/12
HQR ENGINEERING, INC.
DWGS. 298-388
LICENSE EXPIRES NOV. 30, 2013
- BY: Greg Reilly DATE: 11/2/12
SINGH, INC.
DWGS. 112-141
LICENSE EXPIRES NOV. 30, 2013
- BY: Andrew J. Pika DATE: 11/2/12
GEOSERVICES, INC.
DWGS. 181-184, 186-189, 200-202, 239-244
LICENSE EXPIRES NOV. 30, 2013

STATE OF ILLINOIS
DEPARTMENT OF TRANSPORTATION
DIVISION OF HIGHWAYS

SUBMITTED November 7, 2012

John F. Peterson, Jr.
DISTRICT ENGINEER

Dec 7 2012
John D. Baramelli, P.E.
ENGINEER OF DESIGN AND ENVIRONMENT

Dec 7 2012
William R. Freyler
DIRECTOR, DIVISION OF HIGHWAYS

PRINTED BY THE AUTHORITY
OF THE STATE OF ILLINOIS

HDR
8550 W. Bryn Mawr Ave., Suite 900
Chicago, IL 60631
773-380-7900
HDR Engineering, Inc.

Rev