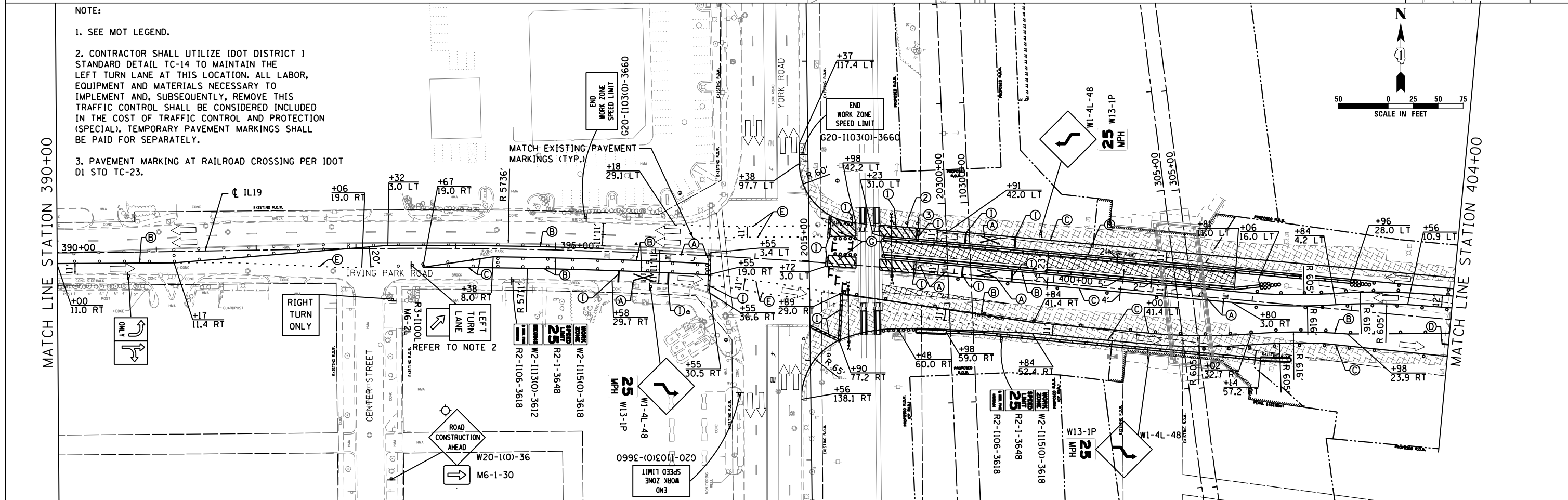


NOTE:
1. SEE MOT LEGEND.



NOTE:
1. SEE MOT LEGEND.
2. CONTRACTOR SHALL UTILIZE IDOT DISTRICT 1 STANDARD DETAIL TC-14 TO MAINTAIN THE LEFT TURN LANE AT THIS LOCATION. ALL LABOR, EQUIPMENT AND MATERIALS NECESSARY TO IMPLEMENT AND, SUBSEQUENTLY, REMOVE THIS TRAFFIC CONTROL SHALL BE CONSIDERED INCLUDED IN THE COST OF TRAFFIC CONTROL AND PROTECTION (SPECIAL). TEMPORARY PAVEMENT MARKINGS SHALL BE PAID FOR SEPARATELY.
3. PAVEMENT MARKING AT RAILROAD CROSSING PER IDOT D1 STD TC-23.

MATCH LINE STATION 390+00

MATCH LINE STATION 404+00



USER NAME = user	DESIGNED - JJS	REVISED -
PLOT SCALE = *SCALE*	DRAWN - TT	REVISED -
PLOT DATE = 11/21/2012	CHECKED - LGP	REVISED -
	DATE - 11-20-2012	REVISED -

**STATE OF ILLINOIS
DEPARTMENT OF TRANSPORTATION**

**MAINTENANCE OF TRAFFIC STAGE 1A
IL ROUTE 19 (IRVING PARK RD.)**

SCALE: 1" = 50' SHEET NO. 9 OF 29 SHEETS STA. 377+51.75 TO STA. 404+00

F.A.U. RTE. 1321	SECTION 32VB	COUNTY DUPAGE	TOTAL SHEETS 388	SHEET NO. 58
CONTRACT NO. 60W01				
ILLINOIS FED. AID PROJECT				