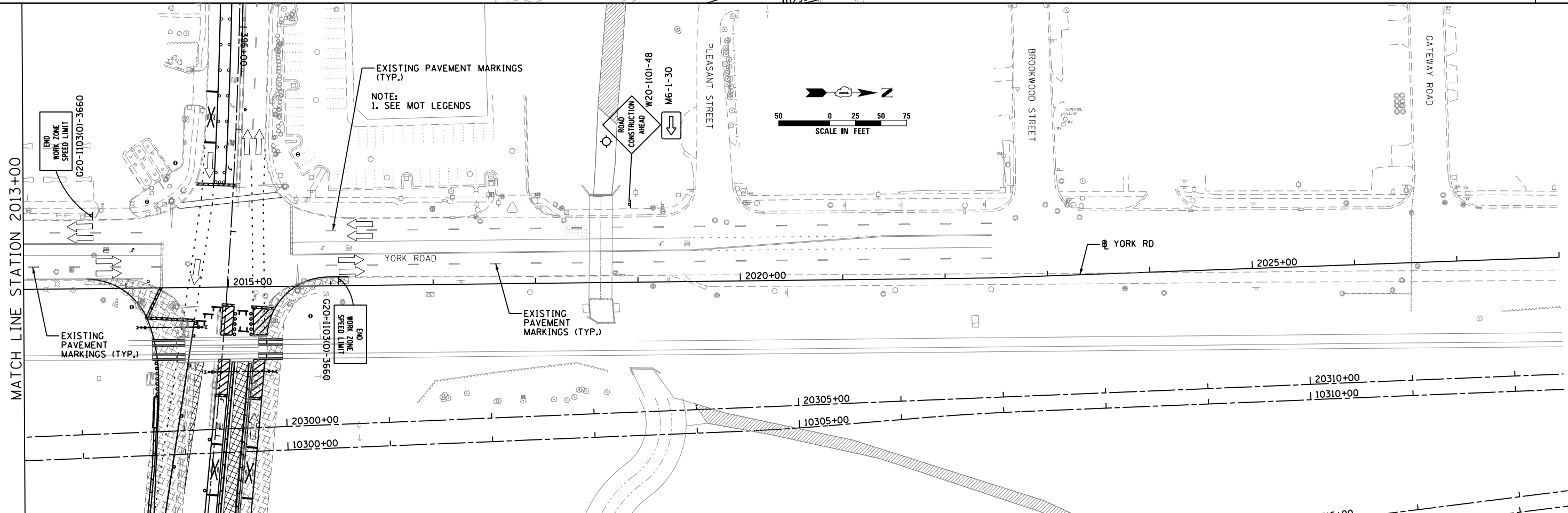
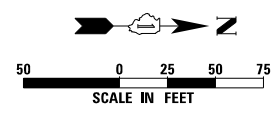


NOTES:  
 1. SEE MOT LEGENDS.  
 2. IDOT STANDARDS 701101, 701606, AND 701701 SHALL BE UTILIZED TO PROVIDE TRAFFIC CONTROL AND PROTECTION FOR THE CONSTRUCTION OF TEMPORARY PAVEMENT AND OTHER CONSTRUCTION ACTIVITIES DURING THIS CONSTRUCTION STAGE.

MATCH LINE STATION 2013+00



EXISTING PAVEMENT MARKINGS (TYP.)  
 NOTE:  
 1. SEE MOT LEGENDS

MATCH LINE STATION 2013+00



USER NAME = user	DESIGNED - JJS	REVISED -
PLOT SCALE = *SCALE*	DRAWN - TT	REVISED -
PLOT DATE = 11/22/2012	CHECKED - LGP	REVISED -
	DATE - 11-02-2012	REVISED -

**STATE OF ILLINOIS  
 DEPARTMENT OF TRANSPORTATION**

**MAINTENANCE OF TRAFFIC STAGE 1A  
 YORK RD.**

SCALE: 1" = 50' SHEET NO. 11 OF 29 SHEETS STA. 2000+00 TO STA. 2028+00

F.A.U. RTE.	SECTION	COUNTY	TOTAL SHEETS	SHEET NO.
1321	32VB	DUPAGE	388	60
CONTRACT NO. 60W01				
ILLINOIS FED. AID PROJECT				