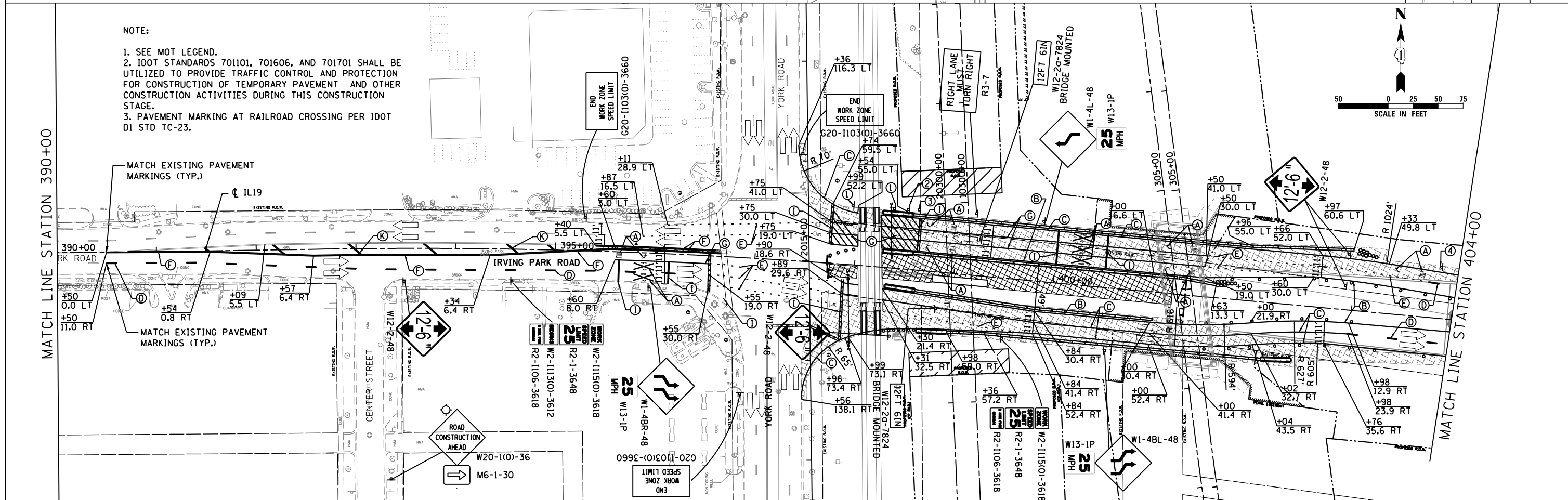


NOTE:
1. SEE MOT LEGEND.



NOTE:
1. SEE MOT LEGEND.
2. IDOT STANDARDS 701101, 701606, AND 701701 SHALL BE UTILIZED TO PROVIDE TRAFFIC CONTROL AND PROTECTION FOR CONSTRUCTION OF TEMPORARY PAVEMENT AND OTHER CONSTRUCTION ACTIVITIES DURING THIS CONSTRUCTION STAGE.
3. PAVEMENT MARKING AT RAILROAD CROSSING PER IDOT D1 STD TC-23.

MATCH LINE STATION 390+00

MATCH LINE STATION 404+00



USER NAME = user	DESIGNED - JJS	REVISED -
PLOT SCALE = *SCALE*	DRAWN - TT	REVISED -
PLOT DATE = 11/21/2012	CHECKED - LGP	REVISED -
	DATE - 11-20-2012	REVISED -

STATE OF ILLINOIS
DEPARTMENT OF TRANSPORTATION

MAINTENANCE OF TRAFFIC STAGE 2
IL ROUTE 19 (IRVING PARK RD.)

SCALE: 1" = 50' SHEET NO. 12 OF 29 SHEETS STA. 377+51.75 TO STA. 404+00

F.A.U. R.T.E.	SECTION	COUNTY	TOTAL SHEETS	SHEET NO.
1321	32VB	DUPAGE	388	61
CONTRACT NO. 60W01				
ILLINOIS FED. AID PROJECT				