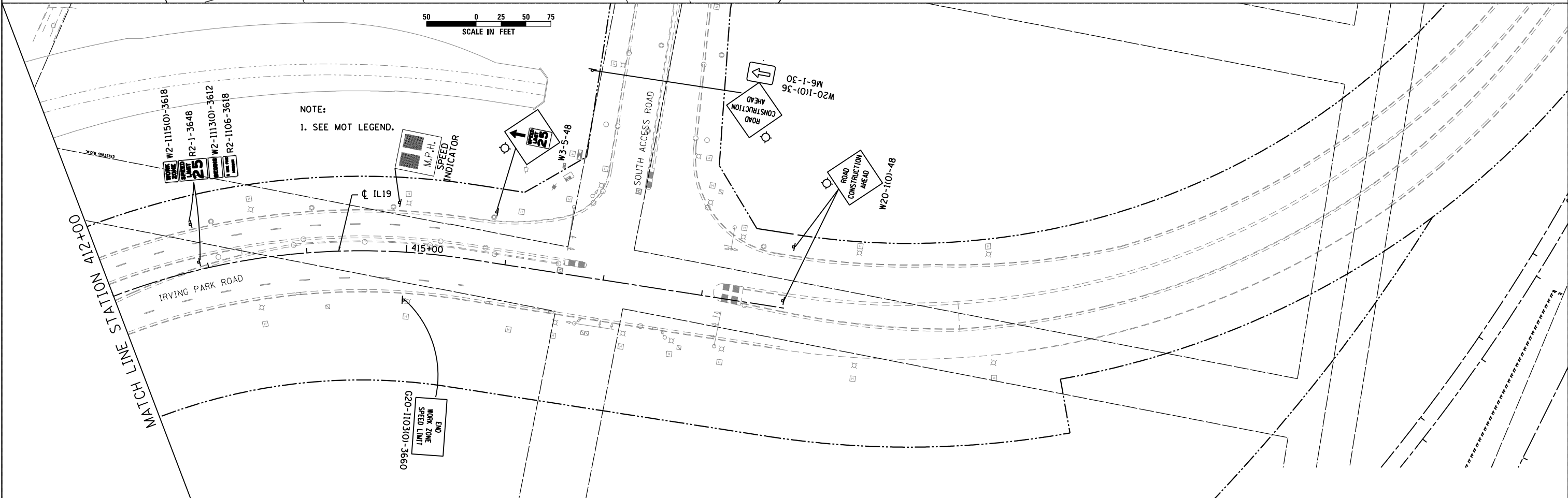
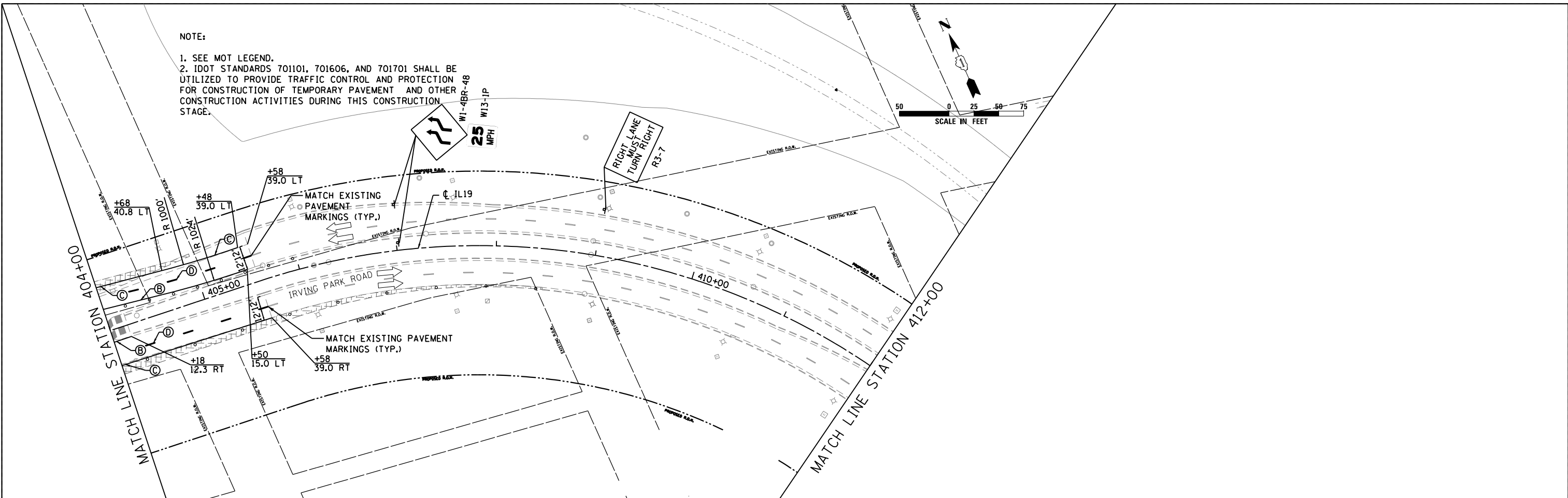


NOTE:

1. SEE MOT LEGEND.
2. IDOT STANDARDS 701101, 701606, AND 701701 SHALL BE UTILIZED TO PROVIDE TRAFFIC CONTROL AND PROTECTION FOR CONSTRUCTION OF TEMPORARY PAVEMENT AND OTHER CONSTRUCTION ACTIVITIES DURING THIS CONSTRUCTION STAGE.



NOTE:

1. SEE MOT LEGEND.



USER NAME = user
 PLOT SCALE = *SCALE*
 PLOT DATE = 11/21/2012

DESIGNED - JJS
 DRAWN - TT
 CHECKED - LGP
 DATE - 11-20-2012

REVISED -
 REVISED -
 REVISED -
 REVISED -

STATE OF ILLINOIS
 DEPARTMENT OF TRANSPORTATION

MAINTENANCE OF TRAFFIC STAGE 5
 IL ROUTE 19 (IRVING PARK RD.)

SCALE: 1" = 50' SHEET NO. 22 OF 29 SHEETS STA. 404+00 TO STA. 418+86.10

F.A.U. RTE.	SECTION	COUNTY	TOTAL SHEETS	SHEET NO.
1321	32VB	DUPAGE	388	71
CONTRACT NO. 60W01				
ILLINOIS FED. AID PROJECT				