

PART OF THE NW 1/4 SECTION 13, T40N, R11E OF THE 3rd PM, ADDISON TOWNSHIP, DUPAGE COUNTY, ILLINOIS.

CURVE DATA
 PROPOSED CENTERLINE CONSTRUCTION
 CURVE NO. IL 19-C02

Δ = 82°13'01"
 D = 08°11'06"
 R = 700.00'
 L = 1004.47'
 T = 610.83'
 E = 229.04'

955 PC STA. 405+58.20
 N. 1,928,516.2234 E. 1,092,172.5549

957 PI STA. 411+69.03
 N. 1,928,459.8578 E. 1,092,780.7801

956 PT STA. 415+62.67
 N. 1,927,849.6024 E. 1,092,807.3010

PARCEL NUMBER	OWNER	TOTAL HOLDING ACRES	PART TAKEN ACRES	REMAINDER ACRES	PREV. DED. ACRES	EASEMENT ACRES	EASEMENT PURPOSE	PERMANENT TAX INDEX NUMBER	PROPERTY ACQUIRED BY
1HS0001A	CITY OF CHICAGO, A MUNICIPAL CORPORATION	362.926±	0.369	359.404±	0.184	0.358	CONSTRUCTION	SEE PIN TABLE	
1HS0001B			2.450						
1HS0001C			0.703						
1HS0001E-A			0.264						
1HS0001E-C			0.264			0.222	CONSTRUCTION		
1HS0002A	CITY OF CHICAGO, A MUNICIPAL CORPORATION	230.15±	3.376	225.74±		0.165	CONSTRUCTION	SEE PIN TABLE	
1HS0002B			0.216						
1HS0002C			0.559						
1HS0002E									

** = DENOTES AREA DERIVED FROM RECORDED INFORMATION, TAX MAPS AND AERIAL PHOTOGRAPHY. (NOT SURVEYED)

PIN TABLE

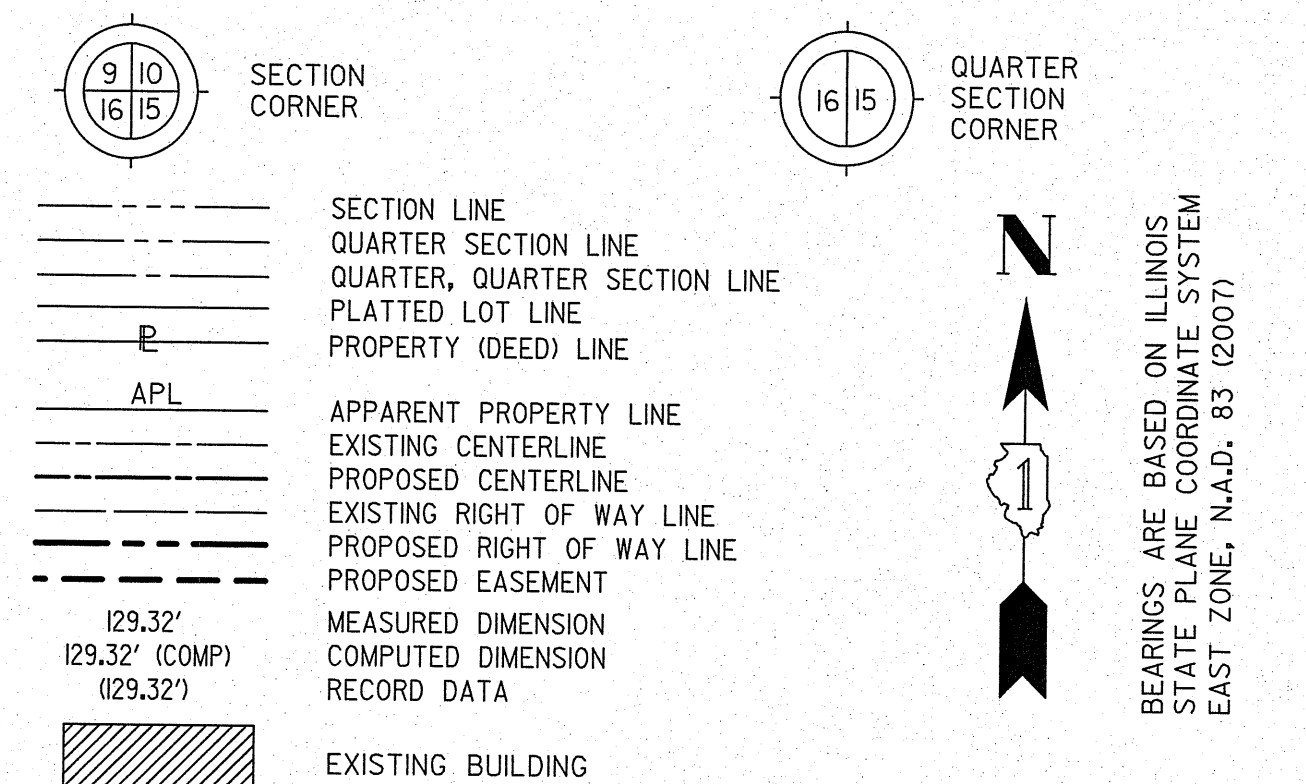
PARCEL	1HS0001	PARCEL	1HS0002
03-12-300-005		03-13-104-004	
03-13-100-001		03-13-104-005	
03-13-100-002		03-13-104-006	
03-13-100-010		03-13-104-007	
03-13-100-017		03-13-104-008	
03-13-100-021		03-13-104-009	
03-13-100-022		03-13-104-010	
03-13-100-023		03-13-104-011	
03-13-100-024		03-13-104-012	
03-13-100-025		03-13-104-014	
03-13-100-026		03-13-104-015	
03-13-100-030		03-13-104-016	
03-13-100-031		03-13-104-017	
03-13-100-032		03-13-105-005	
03-13-100-040		03-13-105-006	
03-13-100-043		03-13-105-007	
03-13-100-045		03-13-105-008	
03-13-100-048		03-13-105-009	
03-13-101-056		03-13-105-010	
		03-13-106-001	
		03-13-302-013	
		03-13-306-004	
		03-13-306-005	
		03-13-111-001	
		03-13-112-001	

P.I.N. NUMBERS LISTED ARE ONLY THOSE EFFECTED BY THE TAKE AND TEMPORARY EASEMENT AREAS. (NOT THE TOTAL HOLDING)

GRID COORDINATES ARE SHOWN
COORDINATE TABLE ~ PROPOSED IRVING PARK RD.

NO.	STATION	OFFSET	-NORTH-	COORDINATES-	EAST-
960	405+58.20	75.00' LT	N 1,928,590.9034	E 1,092,179.4756	
968	405+58.20	9.66' LT	N 1,928,525.8395	E 1,092,173.4460	
967	405+58.20	63.41' RT	N 1,928,453.0879	E 1,092,166.7040	
961	405+58.20	130.00' RT	N 1,928,386.7780	E 1,092,160.5589	

LEGEND

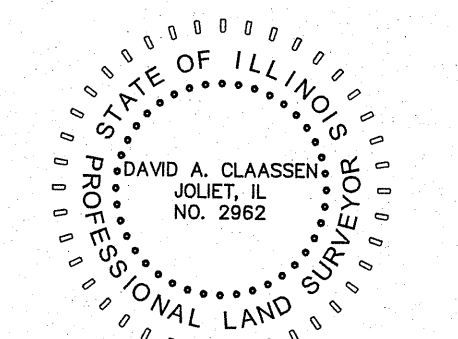


- IRON PIPE OR ROD FOUND ○ SET 5/8" x 30" REBAR
- + CUT CROSS FOUND OR SET ● PK FOUND PK NAIL ○ PK SET PK NAIL
- T1 THESE STAKES REFERENCE FOUND OR SET MONUMENTATION
- T2 SET 5/8 INCH REBAR FLUSH WITH GROUND TO TIE FOUND IRON STAKE. IDENTIFIED BY T3 BY COLORED PLASTIC CAP AND BEARING SURVEYORS PROFESSIONAL NUMBER.
- BT1 THESE STAKES, IN CULTIVATED AREAS, REFERENCE FOUND OR SET MONUMENTATION.
- BT2 BURIED 5/8 INCH REBAR 20 INCHES BELOW GROUND TO TIE FOUND IRON STAKE.
- BT3 IDENTIFIED BY COLORED PLASTIC CAP BEARING SURVEYORS PROFESSIONAL NUMBER.
- STAKING OF PROPOSED RIGHT OF WAY. SET DIVISION OF HIGHWAYS SURVEY MARKER TO MONUMENT THE POSITION SHOWN. IDENTIFIED BY INSCRIPTION DATA AND SURVEYORS PROFESSIONAL NUMBER.
- M STAKING OF PROPOSED RIGHT OF WAY IN CULTIVATED AREAS. BURIED 5/8 INCH REBAR 20 INCHES BELOW GROUND TO MARK FUTURE SURVEY MARKER POSITION. IDENTIFIED BY COLORED PLASTIC CAP BEARING SURVEYORS PROFESSIONAL NUMBER.
- PERMANENT SURVEY MARKER. IDOT STD. 2135 (TO BE SET BY OTHERS)
- RIGHT OF WAY STAKING PROPOSED TO BE SET.

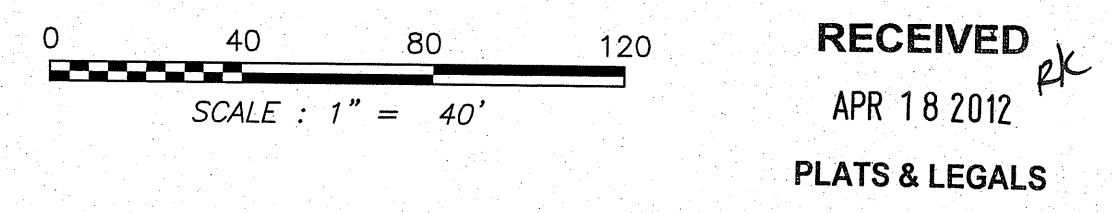
STATE OF ILLINOIS)
 COUNTY OF WILL)
 THIS IS TO CERTIFY THAT WE, CLAASSEN, WHITE & ASSOCIATES, P.C., AN ILLINOIS PROFESSIONAL DESIGN FIRM LAND SURVEYING CORPORATION NUMBER 184-004039, HAVE SURVEYED THE PLAT OF HIGHWAYS SHOWN HEREON IN SECTION 13, TOWNSHIP 40 NORTH, RANGE II EAST OF THE THIRD PRINCIPAL MERIDIAN, DUPAGE COUNTY, THAT THE SURVEY IS TRUE AND COMPLETE AS SHOWN TO THE BEST OF MY KNOWLEDGE AND BELIEF, THAT THE PLAT CORRECTLY REPRESENTS SAID SURVEY, THAT ALL MONUMENTS FOUND AND ESTABLISHED ARE OF PERMANENT QUALITY AND OCCUPY THE POSITIONS SHOWN THEREON AND THAT THE MONUMENTS ARE SUFFICIENT TO ENABLE THE SURVEY TO BE RETRACED. THIS SURVEY CONFORMS TO THE CURRENT ILLINOIS MINIMUM STANDARDS FOR A BOUNDARY SURVEY. MADE FOR THE DEPARTMENT OF TRANSPORTATION, STATE OF ILLINOIS.

DATED AT JOLIET, ILLINOIS THIS _____ DAY OF _____, 2012 A.D.

DAVID A. CLAASSEN
 ILLINOIS PROFESSIONAL LAND SURVEYOR NO. 035-002962
 LICENSE EXPIRES NOVEMBER 30, 2012
 THIS PROFESSIONAL SERVICE CONFORMS TO THE CURRENT ILLINOIS MINIMUM STANDARDS FOR A BOUNDARY SURVEY.



NOTES:
 1) BEARINGS AND COORDINATES SHOWN HEREON ARE BASED ON ILLINOIS STATE PLANE COORDINATE SYSTEM EAST ZONE, NAD 83, (2007).



Claassen, White & Associates, P.C.
 121 AIRPORT DRIVE, UNIT 1
 JOLIET, ILLINOIS 60431
 (815) 744-3720

PLAT OF HIGHWAYS
STATE OF ILLINOIS
DEPARTMENT OF TRANSPORTATION
ILLINOIS ROUTE 19

SECTION @ YORK ROAD DUPAGE COUNTY
 PROJECT JOB NO. R-91-014-07
 STATION 404+00 TO STATION 412+00
 SCALE: 1" = 40' SHEET 3 OF 3

PRINTING DATE: APRIL 13, 2012 - 10:00 AM MicroStation/Sheet 3 REV 04-13-2012.dgn SEE SHEET 2

JOB #5660