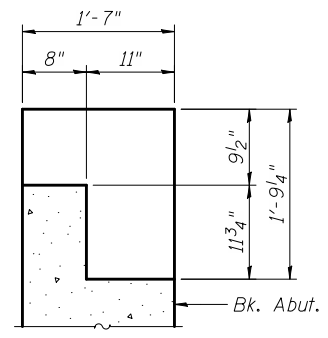
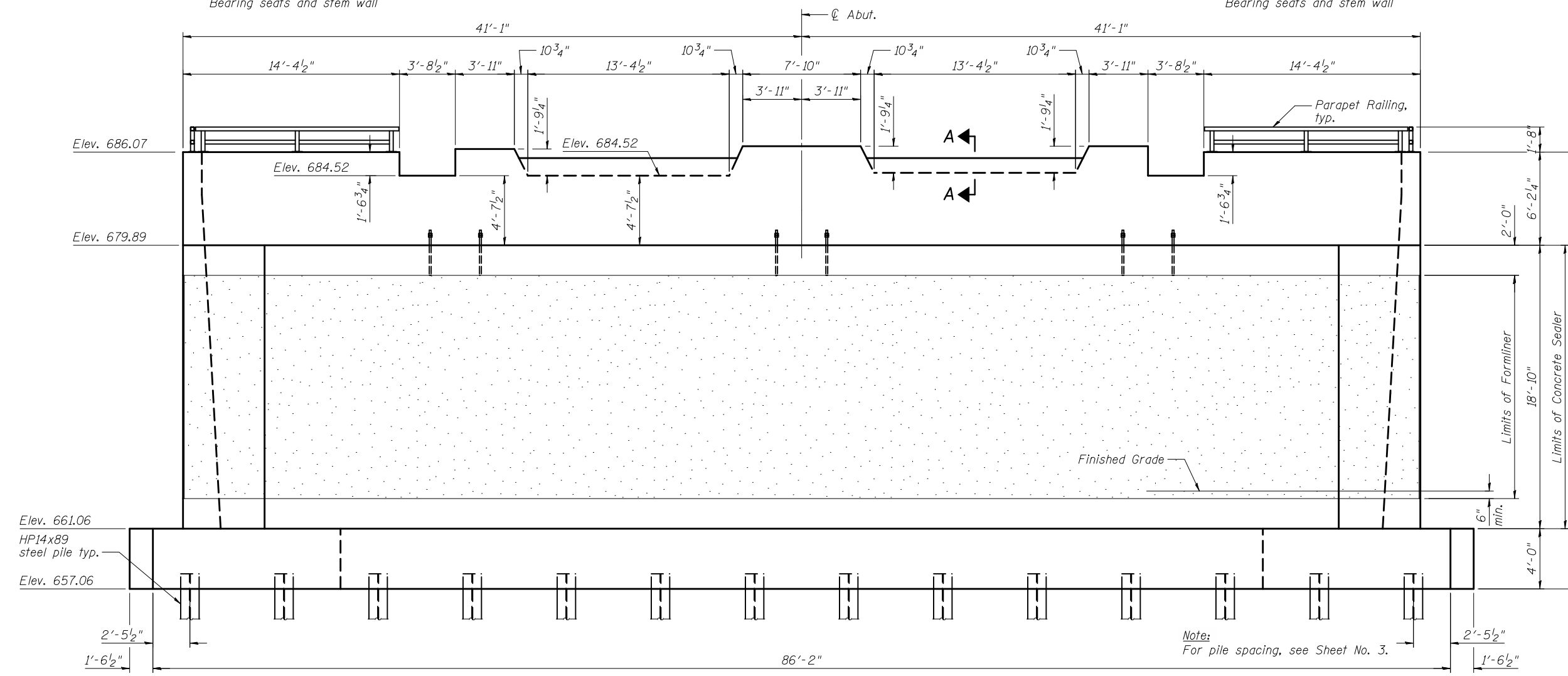


**NORTH ABUTMENT FRAMING PLAN**

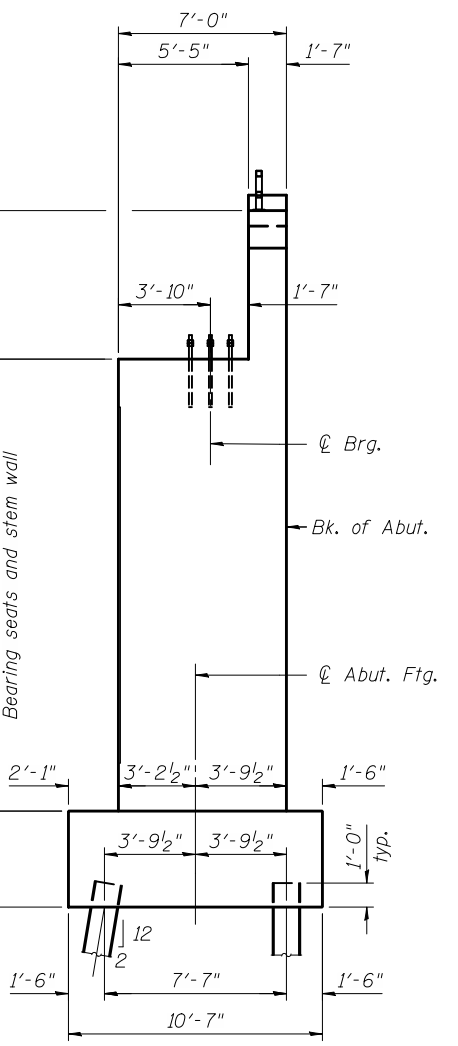


**SECTION A-A**

Note:  
Form Liner Textured Surface shall be ashlar stone pattern with 1" maximum relief.



**NORTH ABUTMENT FRAMING ELEVATION**



**SECTION THRU ABUTMENTS**

ca:\pwworking\oma\0463409\0220226-60842-031-ABD.DGN  
jmlgus  
11/2/2012 11:25:52 AM



USER NAME = jmlgus	DESIGNED - AMM	REVISED -
FILE NAME = 0220226-60842-031-ABD.DGN	CHECKED - LAG	REVISED -
PLOT SCALE = NONE	DRAWN - RMA	REVISED -
PLOT DATE = 11/2/2012	CHECKED - AMM	REVISED -

**STATE OF ILLINOIS  
DEPARTMENT OF TRANSPORTATION**

**NORTH ABUTMENT PLAN AND ELEVATION  
STRUCTURE NO. 022-0226**

SHEET NO. 31 OF 43 SHEETS

F.A.U. RTE.	SECTION	COUNTY	TOTAL SHEETS	SHEET NO.
1321	32VB	DU PAGE	388	172
CONTRACT NO. 60W01			ILLINOIS FED. AID PROJECT	