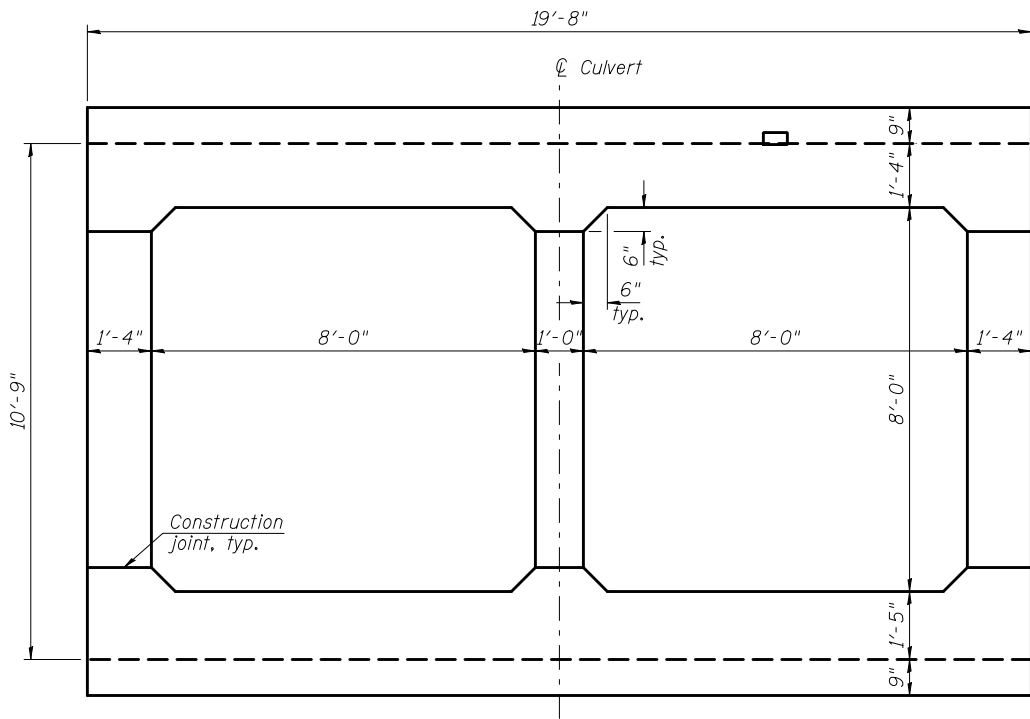


SECTION THRU BARREL

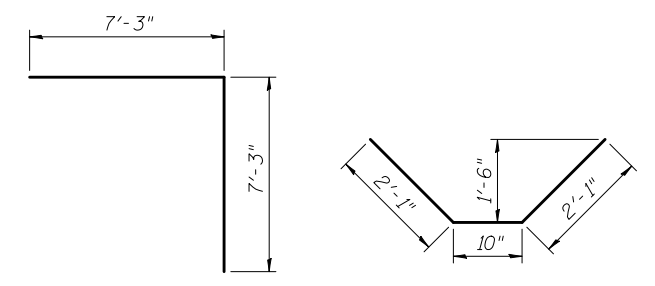


HALF END VIEW
Upstream end at existing culvert

HALF END VIEW
Downstream end

BILL OF BARS

Bar	No.	Size	Length	Shape	
a ₁	332	#7	13'-4"	—	
a ₂	664	#6	14'-6"	┌	
a ₃	332	#6	19'-4"	—	
a ₄	332	#4	5'-0"	└	
a ₅	664	#4	3'-2"	└	
h	468	#6	34'-0"	—	
h ₈	8	#7	19'-4"	—	
h _{30(E)}	11	#8	9'-10"	┌	
h _{31(E)}	10	#5	4'-10"	┌	
s	82	#4	5'-7"	└	
v	332	#6	10'-4"	—	
v ₁	664	#5	7'-2"	┌	
Concrete Box Culverts CPR Special				Cu. Yd.	303.3
Reinforcement Bars				Pound	70,310
Reinforcement Bars, Epoxy Coated				Pound	340
Expansion Bolts 3/4" Inch				Each	28



BAR a₂

BAR a₄

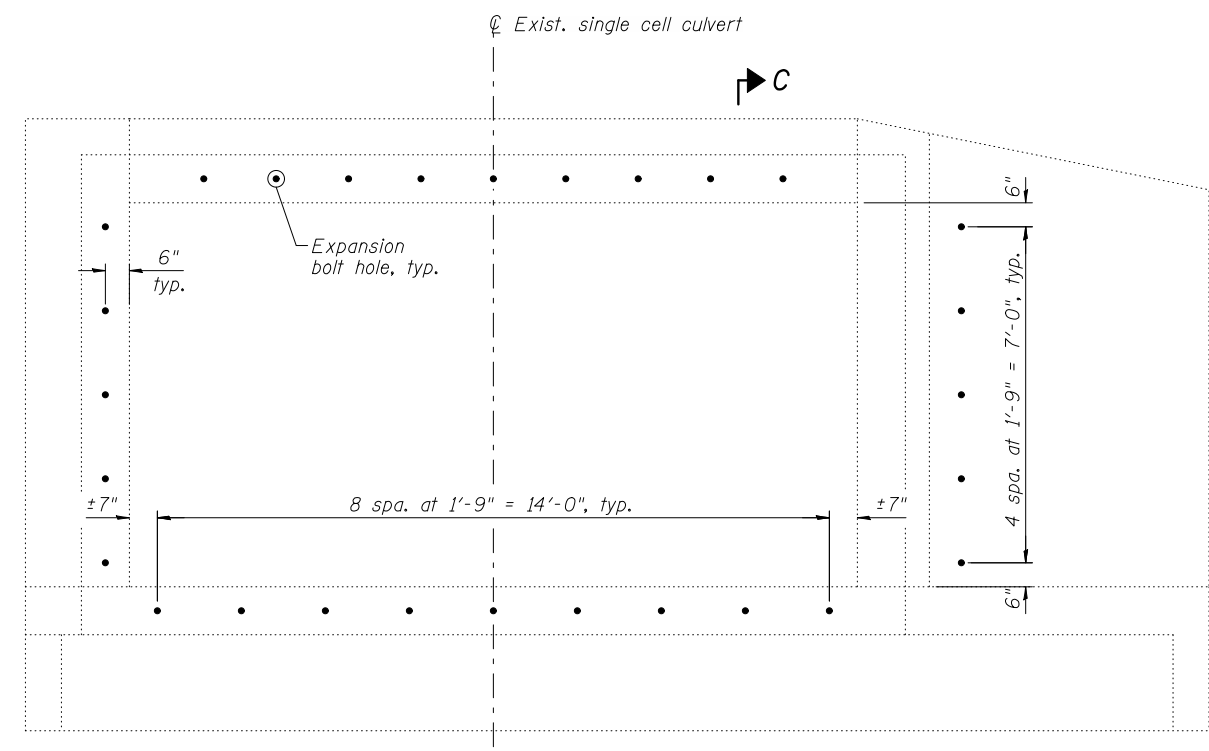
BAR a₅

BAR h_{30(E)}

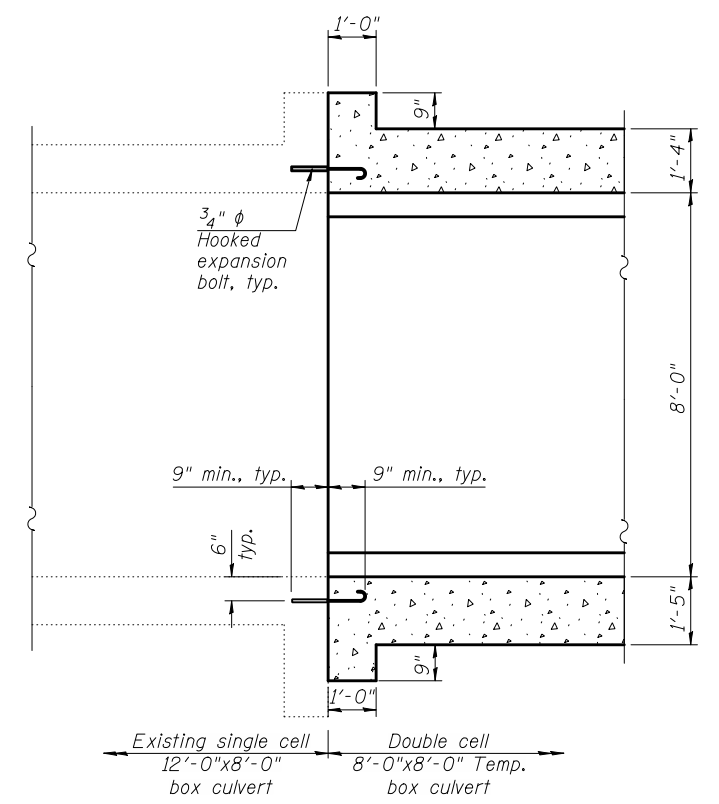
BAR h_{31(E)}

BAR s

BAR v₁



END ELEVATION OF EXISTING CULVERT
At downstream end, showing expansion bolt locations



SECTION C-C
Upstream end of culvert, showing expansion bolt locations

ca:\pwworking\oma\d061444\0223125-60B42-003-TDT.DGN
jmgus

11/2/2012 11:35:26 AM



USER NAME = jmgus	DESIGNED - DLO	REVISED -
FILE NAME = 0223125-60B42-003-TDT.DGN	CHECKED - LJC	REVISED -
PLOT SCALE = NONE	DRAWN - RMA	REVISED -
PLOT DATE = 11/2/2012	CHECKED - LGP	REVISED -

STATE OF ILLINOIS
DEPARTMENT OF TRANSPORTATION

DETAILS
TEMPORARY CULVERT UNDER CPR

SHEET NO. 3 OF 5 SHEETS

F.A.U. RTE.	SECTION	COUNTY	TOTAL SHEETS	SHEET NO.
1321	32VB	DU PAGE	388	187
CONTRACT NO. 60W01				
ILLINOIS FED. AID PROJECT				