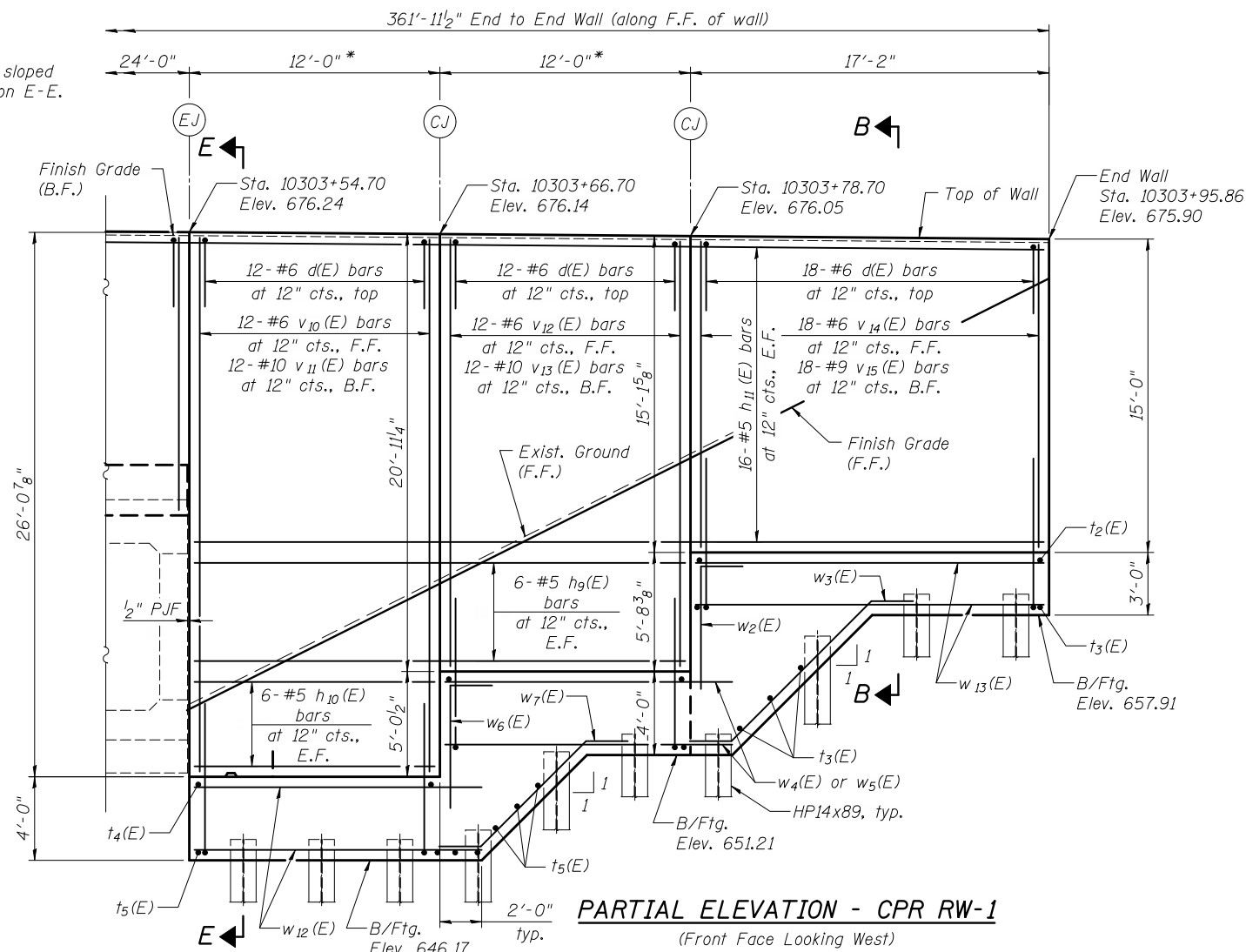
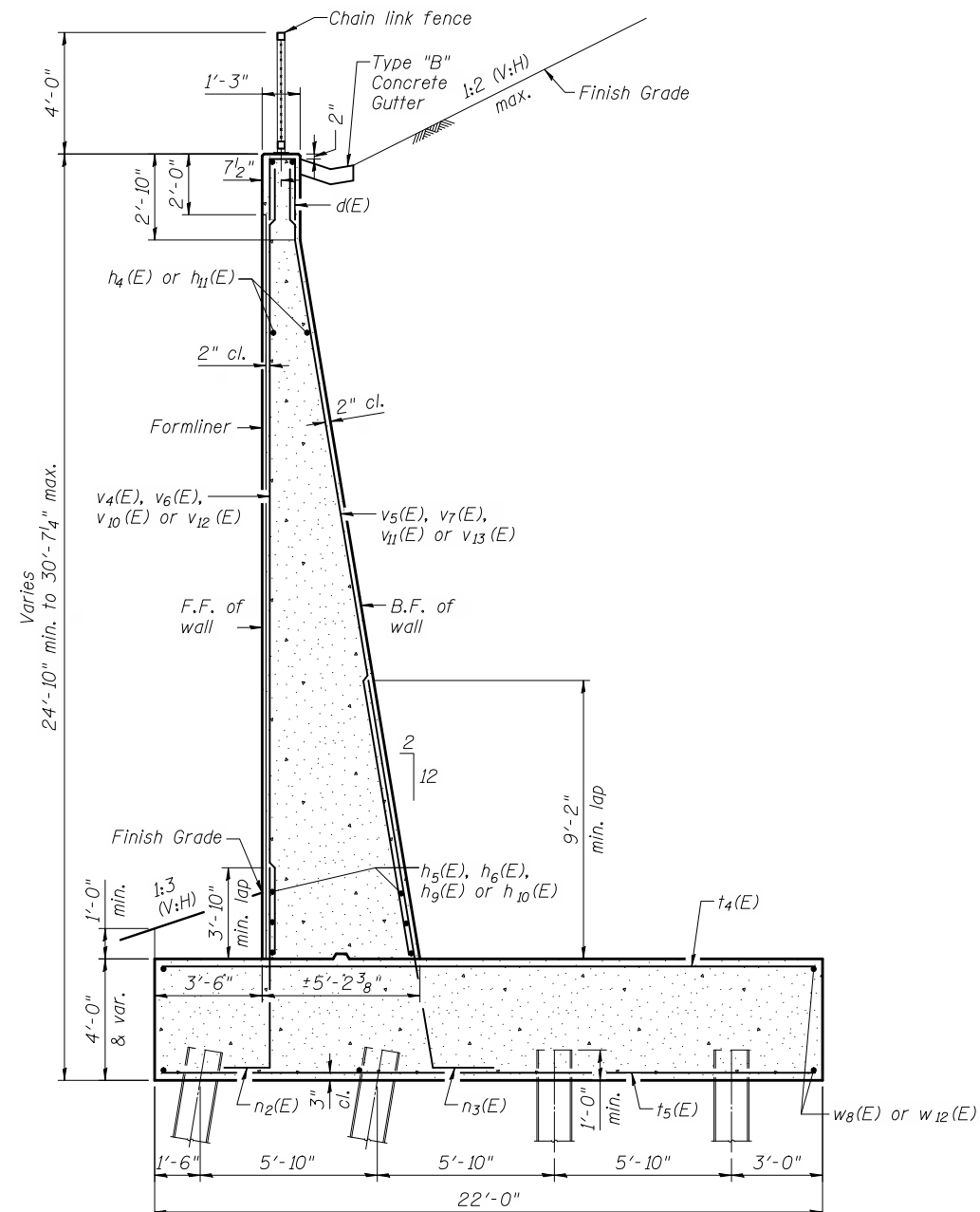


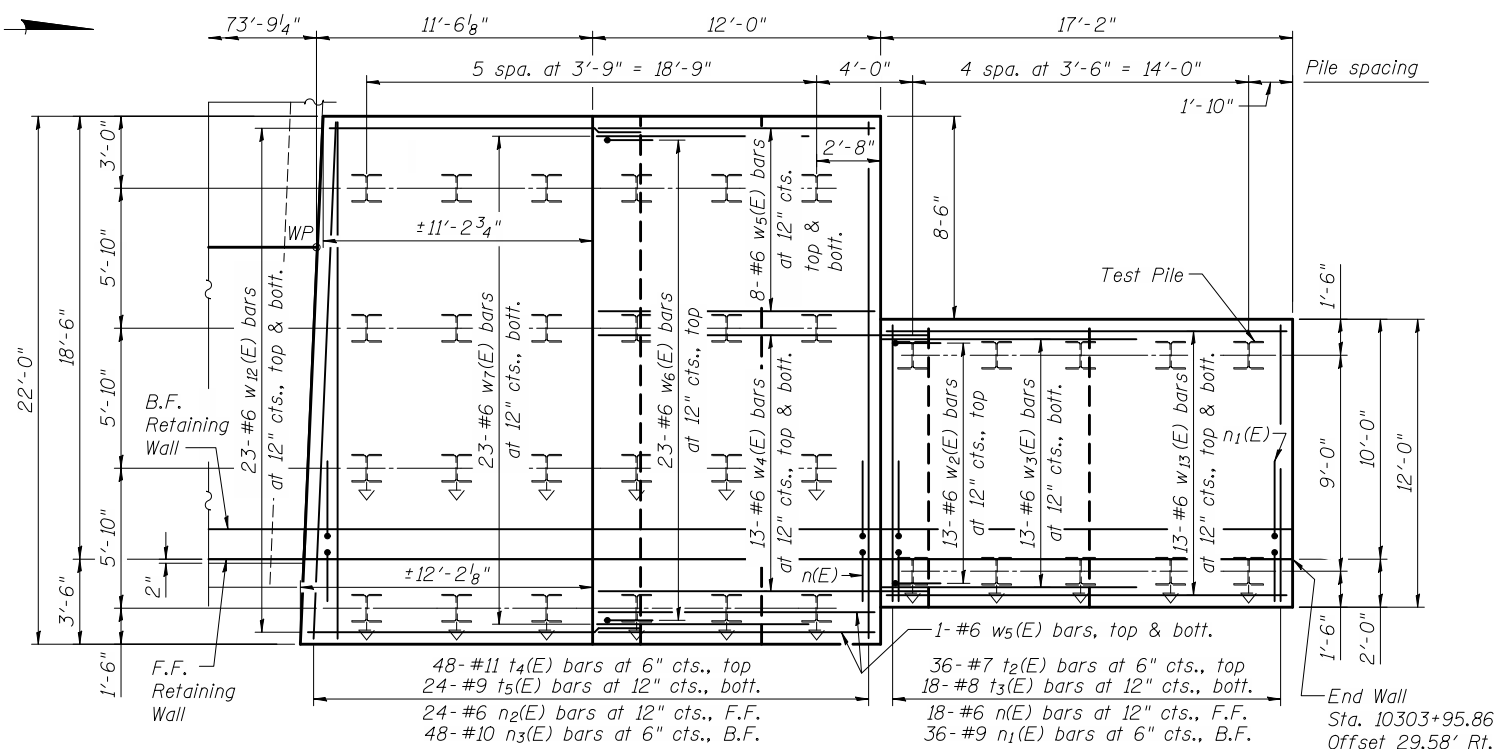
* Note: B.F. of wall sloped 2H:12V. See Section E-E.



PARTIAL ELEVATION - CPR RW-1
(Front Face Looking West)



SECTION E-E
(Looking downstation)



PARTIAL FOOTING PLAN - CPR RW-1

ca:\pwworking\oma\d0593503\WXXX-60B42-007-WEL.DGN
jmgigus

11/2/2012 11:31:01 AM



USER NAME = jmgigus
FILE NAME = WXXX-60B42-007-WEL.DGN
PLOT SCALE = NONE
PLOT DATE = 11/2/2012

DESIGNED - BWC
CHECKED - JAR
DRAWN - JM
CHECKED - JAR

REVISED -
REVISED -
REVISED -
REVISED -

**STATE OF ILLINOIS
DEPARTMENT OF TRANSPORTATION**

**CPR RW-1 PLAN AND ELEVATION
CPR RETAINING WALLS**

SHEET NO. 11 OF 42 SHEETS

F.A.P. RTE.	SECTION	COUNTY	TOTAL SHEETS	SHEET NO.
345A	32VB	DU PAGE	388	213
CONTRACT NO. 60W01				
ILLINOIS FED. AID PROJECT				