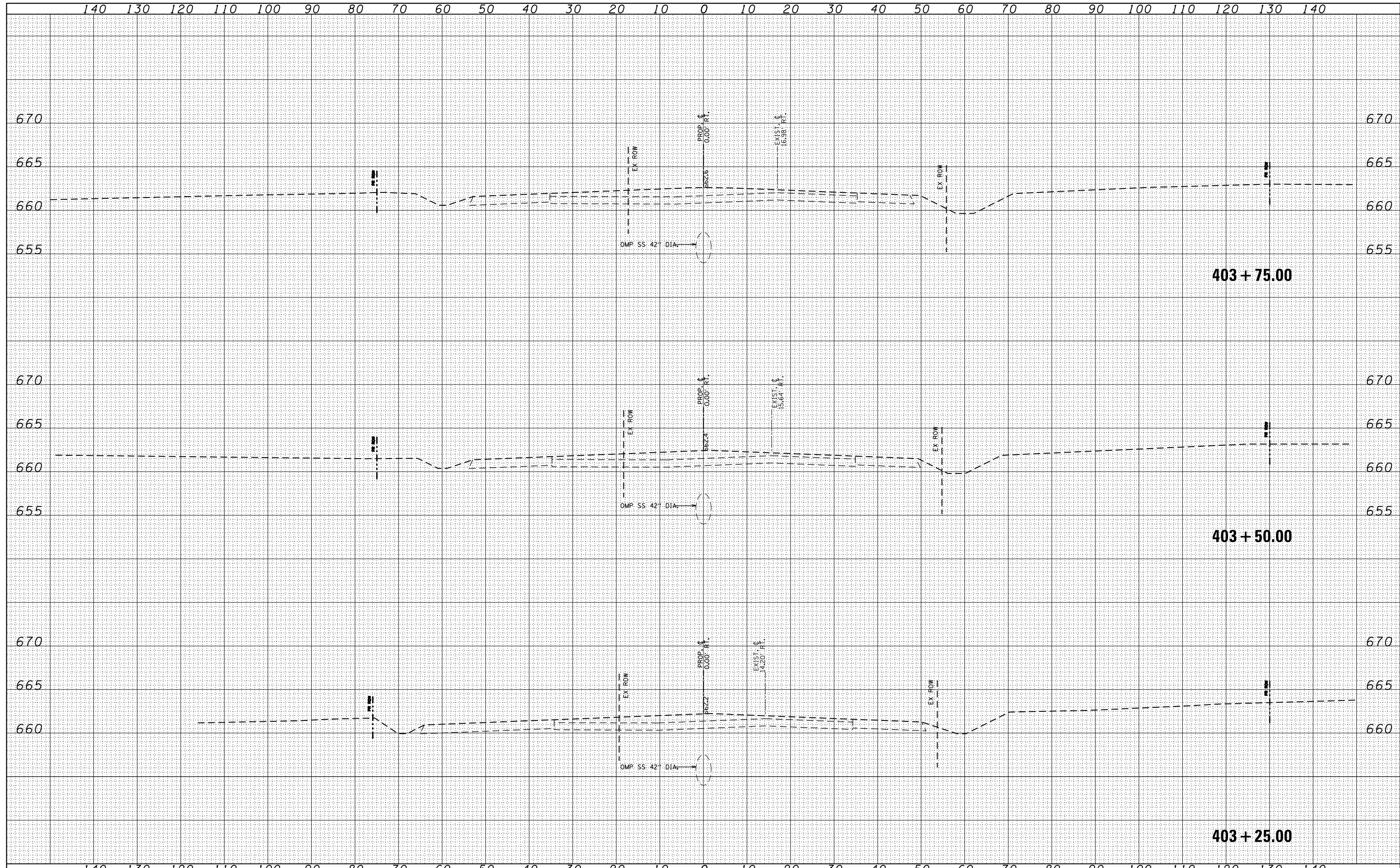


DATE	
BY	
SURVEYED	
PLOTTED	
TEMPLATE	
AREAS	
CHECKED	
NO.	

DATE	
BY	
SURVEYED	
PLOTTED	
TEMPLATE	
AREAS	
CHECKED	
NO.	



USER NAME	- user
DESIGNED	- MPK
DRAWN	- ML
CHECKED	- LGP
DATE	- 11-02-2012

REVISED	-
REVISED	-
REVISED	-
REVISED	-

**STATE OF ILLINOIS
DEPARTMENT OF TRANSPORTATION**

**IRVING PARK (IL 19)
CROSS SECTIONS- STAGES 3 THROUGH 5**

SCALE: 1"=10'H; 1"=5'V SHEET NO. 12 OF 19 SHEETS STA. 403+25.00 TO STA. 403+75.00

F.A.U. RTE.	SECTION	COUNTY	TOTAL SHEETS	SHEET NO.
1321	32VB	DUPAGE	388	290
CONTRACT NO. 60W01				
ILLINOIS FED. AID PROJECT				