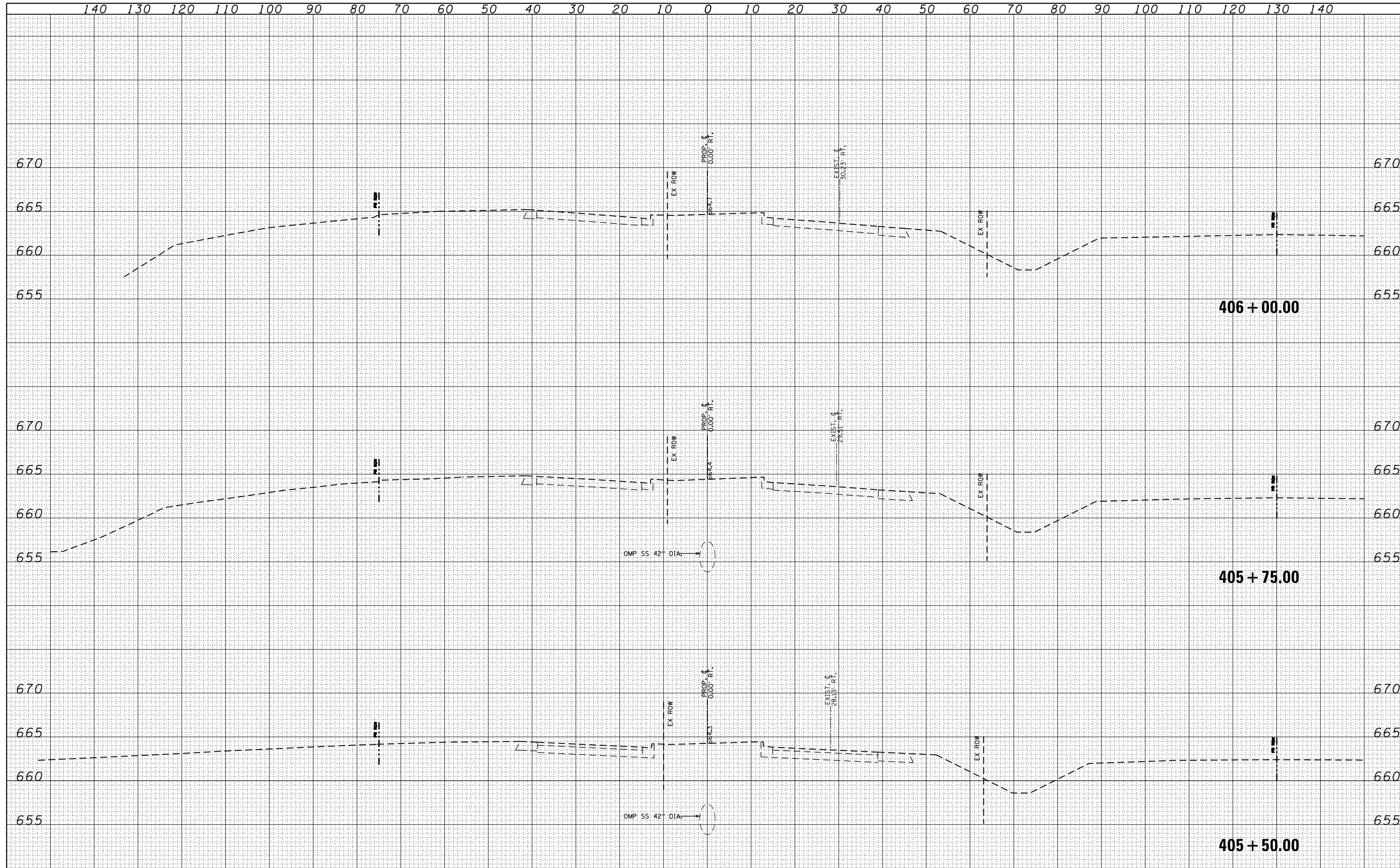


DATE	
BY	
FINAL SURVEY	SURVEYED
NOTE BOOK	PLOTTED
NO.	TEMPLATE
	AREAS CHECKED

DATE	
BY	
ORIGINAL SURVEY	SURVEYED
NOTE BOOK	PLOTTED
NO.	TEMPLATE
	AREAS CHECKED



USER NAME	- user
DESIGNED	- MPK
DRAWN	- ML
CHECKED	- LGP
DATE	- 11-02-2012

REVISÉD	-
REVISÉD	-
REVISÉD	-
REVISÉD	-

**STATE OF ILLINOIS  
DEPARTMENT OF TRANSPORTATION**

**IRVING PARK (IL 19)  
CROSS SECTIONS- STAGES 3 THROUGH 5**

SCALE: 1"=10'H; 1"=5'V SHEET NO. 15 OF 19 SHEETS STA. 405+50.00 TO STA. 406+00.00

F.A.U. RTE.	SECTION	COUNTY	TOTAL SHEETS	SHEET NO.
1321	32VB	DUPAGE	388	293
CONTRACT NO. 60W01				
ILLINOIS FED. AID PROJECT				