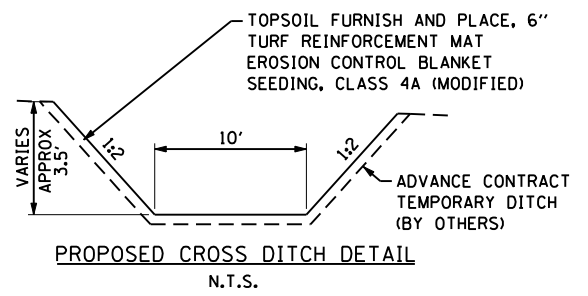
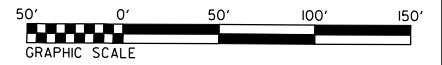
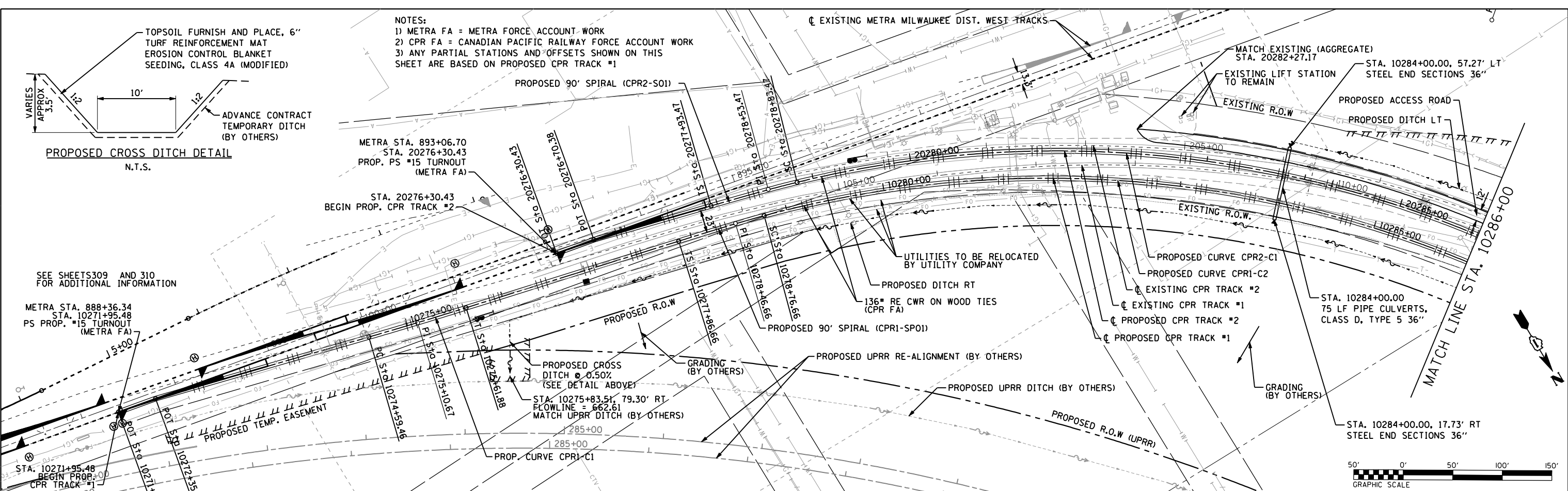


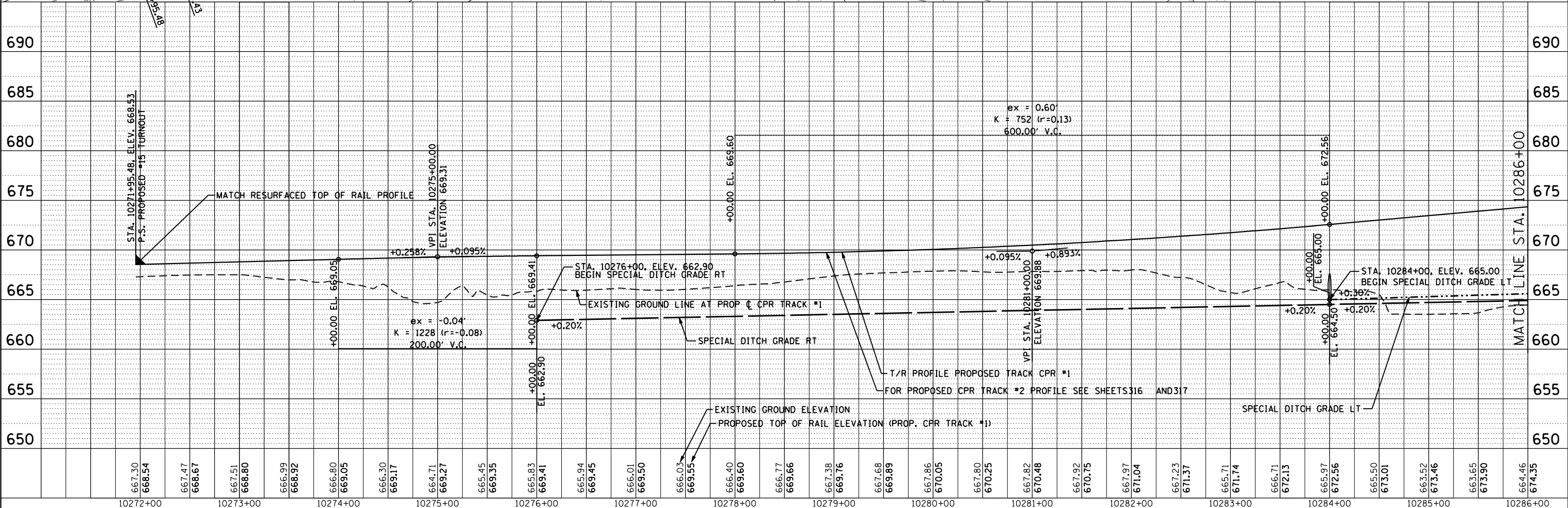
NOTES:  
 1) METRA FA = METRA FORCE ACCOUNT WORK  
 2) CPR FA = CANADIAN PACIFIC RAILWAY FORCE ACCOUNT WORK  
 3) ANY PARTIAL STATIONS AND OFFSETS SHOWN ON THIS SHEET ARE BASED ON PROPOSED CPR TRACK #1



PLAN	SURVEYED	DATE
	PLOTTED	
	CHECKED	
	BY	
	NO.	



PROFILE	SURVEYED	DATE
	PLOTTED	
	CHECKED	
	BY	
	NO.	



FILE NAME: ... \060601-SHT-PL-UPRR-R003.DGN



USER NAME = nratem	DESIGNED - NMR	REVISED -
PLOT SCALE = 100.0000' / IN.	DRAWN - NMR	REVISED -
PLOT DATE = 11/19/2012	CHECKED - MPH	REVISED -
	DATE - 11-02-2012	REVISED -

STATE OF ILLINOIS  
 DEPARTMENT OF TRANSPORTATION

CANADIAN PACIFIC RAILWAY  
 PLAN AND PROFILE

SCALE: 1" = 50' SHEET NO. 3 OF 12 SHEETS STA. 10272+40.23 TO STA. 10286+00

F.A.U. RTE. 1321	SECTION 32VB	COUNTY	TOTAL SHEETS 388	SHEET NO. 311
CONTRACT NO. 60W01			ILLINOIS FED. AID PROJECT	