

STATE OF ILLINOIS
DEPARTMENT OF TRANSPORTATION
DIVISION OF HIGHWAYS

F.A.U. RTE.	SECTION	COUNTY	TOTAL SHEETS	SHEET NO.
3512	02-00177-00-WR	COOK	142	1
			+2 = 144	
FED. ROAD DISTRICT		ILLINOIS	FED. AID PROJECT	
CONTRACT NUMBER 63514				

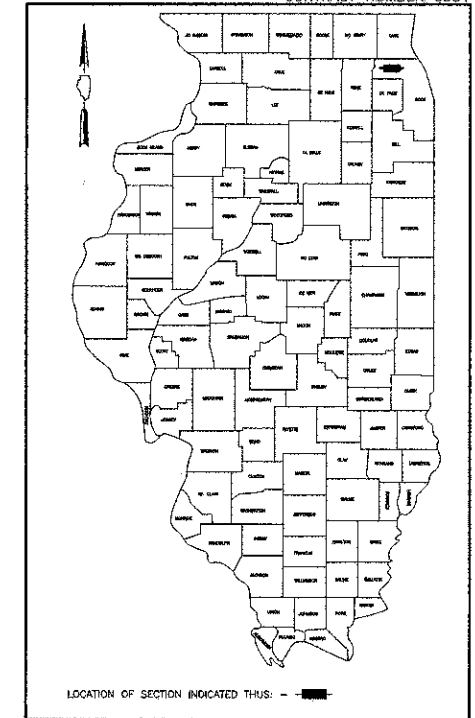
PLANS FOR PROPOSED FEDERAL AID PROJECT

F.A.U. 3512 (U.S. ROUTE 14 NORTHWEST HIGHWAY), F.A.U. 2655 (DAVIS STREET)
AND F.A.U. 2655 (ARTHUR AVENUE)

550 FEET WEST OF ARTHUR AVENUE TO WATERMAN AVENUE
RAILROAD GRADE CROSSING IMPROVEMENT AND TRAFFIC SIGNAL MODIFICATION

SECTION 02-00177-00-WR
PROJECT NO: M-8003(426)
VILLAGE OF ARLINGTON HEIGHTS
COOK COUNTY
C-91-252-04

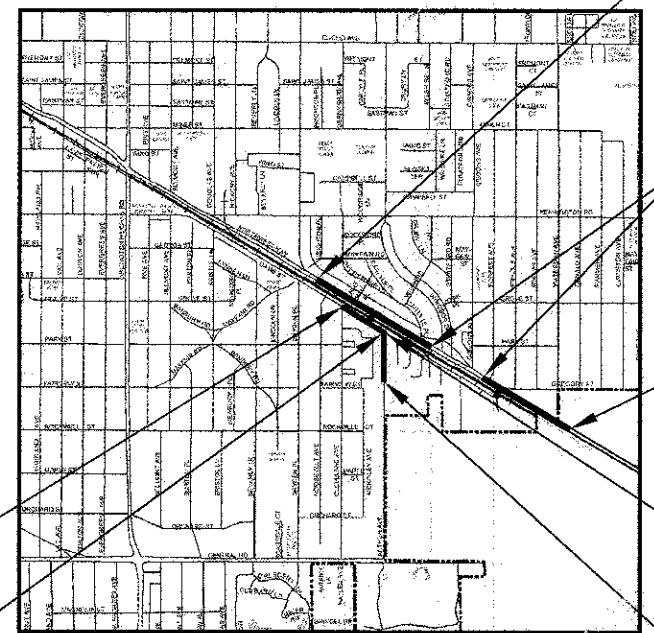
IMPROVEMENT LOCATED IN THE
VILLAGE OF ARLINGTON HEIGHTS



INDEX OF SHEETS

SHEET NO.	DESCRIPTION
1	COVER SHEET
2	GENERAL NOTES
3-8	SUMMARY OF QUANTITIES
9-10	TYPICAL SECTIONS
11-16	SCHEDULES OF QUANTITIES
17	ALIGNMENT, TIES AND BENCHMARKS
18-29	PLAN AND PROFILE SHEETS
30-36	SUGGESTED STAGES OF CONSTRUCTION AND TRAFFIC CONTROL
37	DETOUR PLAN
38-39	EROSION AND SEDIMENT CONTROL
40-51	DRAINAGE AND UTILITIES SHEETS
52-58	RIGHT OF WAY PLANS
59-60	INTERSECTION GRADING PLAN
61-62	PAVEMENT MARKING, SIGNING & LANDSCAPING PLAN
63-68	LANDSCAPING PLANS
69-78	TRAFFIC SIGNALS
79-84	TS-05 DISTRICT ONE STANDARD TRAFFIC SIGNAL DESIGN DETAILS
85-108	LIGHTING RELOCATION
109	CONSTRUCTION DETAILS
110	BD-01 DRIVEWAY DETAILS: DISTANCE BETWEEN R.O.W. AND FACE OF CURB/EDGE OF SHOULDER ≥ 15' (4.5m)
111	BD-02 DRIVEWAY DETAILS: DISTANCE BETWEEN R.O.W. AND FACE OF CURB/EDGE OF SHOULDER ≤ 15' (4.5m)
112	BD-03 OUTLET FOR CONCRETE CURB AND GUTTER
113	BD-07 DETAIL OF STORM SEWER CONNECTION TO EXISTING SEWER
114	BD-08 DETAILS FOR FRAMES AND LIDS ADJUSTMENT WITH MILLING
115	BD-22 PAVEMENT PATCHING FOR HMA SURFACED PAVEMENT
116	BD-32 BUTT JOINT AND HMA TAPER DETAILS
117	TC-11 TYPICAL APPLICATIONS RAISED REFLECTIVE PAVEMENTMARKERS (SNOW-PLOW RESISTANT)
118	TC-13 DISTRICT ONE TYPICAL PAVEMENT MARKINGS
119	TC-16 PAVEMENT MARKING LETTERS AND SYMBOLS FOR TRAFFIC STAGING
120	TC-18 SIGNING FOR FLAGGING OPERATIONS AT WORK ZONE OPENING
121	TC-22 ARTERIAL ROAD INFORMATION SIGNING
122	TS-02 DISTRICT ONE MAST ARM MOUNTED STREET NAME SIGNS
123-142	CROSS SECTIONS
116A	TC-10 TRAFFIC CONTROL AND PROTECTION FOR ROAD CROSS INTERSECTION OF DRIVEWAYS
120A	TC-21 DETOUR SIGNING FOR CLOSING STREETS

FOR LIST OF STANDARDS, SEE SHEET NO. 3
Revised 1/8/13



PROJECT BEGINS
U.S. ROUTE 14
STA. 547+04

PROJECT OMISSION
U.S. ROUTE 14
STA. 564+66 TO
STA. 574+12

PROJECT ENDS
U.S. ROUTE 14
STA. 591+09

PROJECT ENDS
ARTHUR AVENUE
STA. 911+08.34

PROJECT BEGINS
ARTHUR AVENUE
STA. 904+75

PROJECT BEGINS
DAVIS STREET
STA. 13+52

PROJECT ENDS
DAVIS STREET
STA. 22+17

LOCATION MAP (NOT TO SCALE)
SECTIONS 32 & 33, TOWNSHIP 42 NORTH, RANGE 11 EAST, 3rd PM
U.S. ROUTE 14 (NORTHWEST HIGHWAY) PROJECT LENGTH = 3,459 FT. = 0.655 MI.
DAVIS STREET PROJECT LENGTH = 865 FT. = 0.164 MI.
ARTHUR AVENUE PROJECT LENGTH = 633.34 FT. = 0.120 MI.
NET & GROSS PROJECT LENGTH = 4,957.34 FT. = 0.939 MI.

DESIGN DESIGNATION:

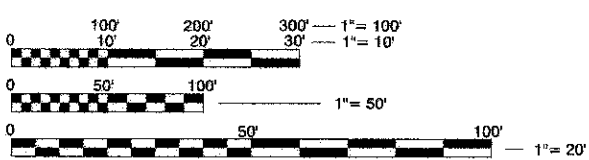
- U.S. ROUTE 14 (NORTHWEST HIGHWAY) = 1810 (09)
- OTHER MINOR ARTERIAL TWS-4 • 4.27 (AC-20)
- DAVIS STREET = 665 (09) • URBAN COLLECTOR TWS-2 • 4.10 (AC-20)
- ARTHUR AVENUE = 535 (09) • URBAN COLLECTOR TWS-2 • 4.30 (AC-20)

ADT'S(2009):

- U.S. ROUTE 14 (NORTHWEST HIGHWAY) = 20,400 VPD
- DAVIS STREET = 6,300 VPD
- ARTHUR AVENUE = 9,700 VPD

DESIGN SPEED

- U.S. ROUTE 14 (NORTHWEST HIGHWAY) = 45 MPH (POSTED SPEED = 40 MPH)
- DAVIS STREET = 30 MPH (POSTED SPEED = 30 MPH)
- ARTHUR AVENUE = 35 MPH (POSTED SPEED = 30 MPH)



FULL SIZE PLANS HAVE BEEN PREPARED USING STANDARD ENGINEERING SCALES. REDUCED SIZED PLANS WILL NOT CONFORM TO STANDARD SCALES. IN MAKING MEASUREMENTS ON REDUCED PLANS, THE ABOVE SCALES MAY BE USED.

J.U.L.I.E.
JOINT UTILITY LOCATION INFORMATION FOR EXCAVATION
1-800-892-0123
OR 811

THE "STANDARD SPECIFICATIONS FOR ROAD AND BRIDGE CONSTRUCTION", ADOPTED JANUARY 1, 2007 BY THE ILLINOIS DEPARTMENT OF TRANSPORTATION, SHALL GOVERN THIS WORK.

CONTRACT NO. 63514

STATE OF ILLINOIS
DEPARTMENT OF TRANSPORTATION
DIVISION OF HIGHWAYS

Approved: *[Signature]* 10/22/2012
Michael L. Parsons, P.E.
Village of Arlington Heights, Deputy Director of Engineering

Passed: *[Signature]* November 9, 2012
C. Haas
District One Engineer of Local Roads & Streets

Releasing for Bid Based on Limited Review: *[Signature]* November 14, 2014
John Fontana, P.E.
Deputy Director of Highways, Region One Engineer

P.E. SIGNATURE: *[Signature]*
P.E. NAME: JOSEPH J. EMRY
DATE: 10/22/2012
IL LICENSE NO.: 062-057496
LICENSE EXPIRATION: 11/30/2013
SHEETS: 69-84 TRAFFIC SIGNALS

P.E. SIGNATURE: *[Signature]*
P.E. NAME: DAVID E. MERTZ
DATE: 10/22/2012
IL LICENSE NO.: 062-052068
LICENSE EXPIRATION: 11/30/2013
SHEETS: 85-108 LIGHTING RELOCATION

P.E. SIGNATURE: *[Signature]*
P.E. NAME: REID T. MAGNER
DATE: 10/22/2012
IL LICENSE NO.: 062-056273
LICENSE EXPIRATION: 11/30/2013
SHEETS: 1-68 AND 109-142

PLANS PREPARED BY:
CIVILTECH
450 E. Devon Ave, Suite 300 - Itasca, Illinois 60143
Tel: 630.773.3900 - Fax: 630.773.3976
www.civiltechinc.com

CONSULTANT ENGINEER: REID T. MAGNER, P.E. CIVILTECH ENGINEERING, INC.
PROGRAM AND OFFICE ENGINEER: CHARLES F. RIDDLE, P.E. 847.705.4406, SCHAUMBURG, IL

SUMMARY OF QUANTITIES

CODE NO.	PAY ITEM	FUNDING BREAKDOWN				LOCATION OF WORK			
		UNIT	TOTAL	U.S. ROUTE 14	DAVIS STREET / ARTHUR AVENUE	LIGHTING	U.S. 14/DAVIS ST. @ ARTHUR AVENUE	EVP	
				CONSTRUCTION TYPE CODE					
			0004	0021	0021	0021			
20100110	TREE REMOVAL (6 TO 15 UNITS DIAMETER)	UNIT	236	155	81				
20100210	TREE REMOVAL (OVER 15 UNITS DIAMETER)	UNIT	97	74	23				
20101100	TREE TRUNK PROTECTION	EACH	31	22	9				
20101200	TREE ROOT PRUNING	EACH	31	22	9				
20101300	TREE PRUNING (1 TO 10 INCH DIAMETER)	EACH	31	22	9				
20101700	SUPPLEMENTAL WATERING	UNIT	16	12	4				
20200100	EARTH EXCAVATION	CU YD	5,902	3,525	2,377				
20201200	REMOVAL AND DISPOSAL OF UNSUITABLE MATERIAL	CU YD	710	538	172				
20400800	FURNISHED EXCAVATION	CU YD	674	502	172				
20800150	TRENCH BACKFILL	CU YD	289	282	7				
21001000	GEOTECHNICAL FABRIC FOR GROUND STABILIZATION	SQ YD	17,150	7,540	9,610				
21101615	TOPSOIL FURNISH AND PLACE, 4"	SQ YD	4,237	3,288	969				
21101645	TOPSOIL FURNISH AND PLACE, 12"	SQ YD	150	150					
25000400	NITROGEN FERTILIZER NUTRIENT	POUND	80	60	20				
25000600	POTASSIUM FERTILIZER NUTRIENT	POUND	80	60	20				
25200110	SODDING, SALT TOLERANT	SQ YD	4,237	3,288	969				
28000250	TEMPORARY EROSION CONTROL SEEDING	POUND	88	66	22				
28000305	* TEMPORARY DITCH CHECKS	FOOT	42	42					
28000400	PERIMETER EROSION BARRIER	FOOT	1,160	1,160					
28000510	INLET FILTERS	EACH	50	38	12				
28100105	STONE RIPRAP, CLASS A3	SQ YD	18	18					
30300001	* AGGREGATE SUBGRADE IMPROVEMENT	CU YD	825	543	282				
30300112	* AGGREGATE SUBGRADE IMPROVEMENT 12"	SQ YD	14,913	6,556	8,357				
35101500	AGGREGATE BASE COURSE, TYPE B	CU YD	267	184	83				
35101800	AGGREGATE BASE COURSE, TYPE B 6"	SQ YD	160		160				
35300500	PORTLAND CEMENT CONCRETE BASE COURSE 10"	SQ YD	3,326	3,326					
40600100	* BITUMINOUS MATERIALS (PRIME COAT)	GALLON	7,019	2,510	4,509				
40600400	MIXTURE FOR CRACKS, JOINTS, AND FLANGEWAYS	TON	1	1					
40600635	LEVELING BINDER (MACHINE METHOD), N70	TON	607	607					
40600932	HOT-MIX ASPHALT SURFACE REMOVAL - BUTT JOINT	SQ YD	216	216					
40603085	HOT-MIX ASPHALT BINDER COURSE, IL-19.0, N70	TON	149		149				
40603240	POLYMERIZED HOT-MIX ASPHALT BINDER COURSE, IL-19.0, N80	TON	3,162	3,162					
40603340	HOT-MIX ASPHALT SURFACE COURSE, MIX "D", N70	TON	63		63				
40603595	POLYMERIZED HOT-MIX ASPHALT SURFACE COURSE, MIX "F", N90	TON	2,460	2,460					
40701846	HOT-MIX ASPHALT PAVEMENT (FULL-DEPTH), 8 1/4"	SQ YD	7,513		7,513				
42001300	PROTECTIVE COAT	SQ YD	6,897	4,388	2,509				
42300200	PORTLAND CEMENT CONCRETE DRIVEWAY PAVEMENT, 8 INCH	SQ YD	176		176				
42300400	PORTLAND CEMENT CONCRETE DRIVEWAY PAVEMENT, 8 INCH	SQ YD	570	116	454				

IDOT STANDARDS REFERENCED

NUMBER	DESCRIPTION
000001-06	STANDARD SYMBOLS, ABBREVIATIONS, & PATTERNS
280001-07	TEMPORARY EROSION CONTROL SYSTEMS
353001-04	PCC BASE COURSE WITH BITUMINOUS CONCRETE BINDER AND SURFACE COURSES
420001-07	PAVEMENT JOINTS
420111-03	PCC PAVEMENT ROUNDOUTS
420501-04	PCC PAVEMENT AND PCC BASE COURSE ADJACENT TO RAILROAD GRADE CROSSING
424001-07	PERPENDICULAR CURB RAMPS FOR SIDEWALKS
442201-03	CLASS C AND D PATCHES
601001-04	SUB-SURFACE DRAINS
602001-02	CATCH BASIN, TYPE A
602011-02	CATCH BASIN, TYPE C
602401-03	MANHOLE TYPE A
602601-02	PRECAST REINFORCED CONCRETE FLAT SLAB TOP
602701-02	MANHOLE STEPS
604001-03	FRAME AND LIDS, TYPE 1
604036-02	GRATE, TYPE 8
604086-02	FRAME AND GRATE, TYPE 23
606001-05	CONCRETE CURB TYPE B AND COMBINATION CONCRETE CURB AND GUTTER
606301-04	PC CONCRETE ISLANDS AND MEDIANS
606306-03	CORRUGATED PC CONCRETE MEDIANS
701301-04	LANE CLOSURE, 2L 2W, SHORT TIME OPERATIONS
701311-03	LANE CLOSURE, 2L 2W, MOVING OPERATIONS-DAY ONLY
701326-04	LANE CLOSURE, 2L 2W, PAVEMENT WIDENING, FOR SPEEDS > 45 MPH
701427-01	LANE CLOSURE, MULTILANE, INTERMITTENT OR MOVING OPER., FOR SPEEDS ≤ 40 MPH
701501-06	URBAN LANE CLOSURE, 2L 2W UNDIVIDED
701606-08	URBAN LANE CLOSURE, MULTILANE, 2W WITH MOUNTABLE MEDIUM
701901-02	TRAFFIC CONTROL DEVICES
720001-01	SIGN PANEL MOUNTING DETAILS
720006-03	SIGN PANEL ERECTION DETAILS
720011-01	METAL POSTS FOR SIGNS, MARKERS, & DELINEATORS
728001-01	TELESCOPING STEEL SIGN SUPPORT
729001-01	APPLICATION OF TYPES A & B METAL POSTS (FOR SIGNS AND MARKERS)
731001-01	BASE FOR TELESCOPING STEEL SIGN SUPPORT
780001-03	TYPICAL PAVEMENT MARKINGS
805001-01	ELECTRICAL SERVICE INSTALLATION DETAILS
814001-02	HANDHOLES
814006-02	DOUBLE HANDHOLES
857001-01	STANDARD PHASE DESIGNATION DIAGRAMS AND PHASE SEQUENCES
857006-01	SUPERVISED RAILROAD INTERCONNECT CIRCUIT
862001-01	UNINTERRUPTIBLE POWER SUPPLY (UPS)
873001-02	TRAFFIC SIGNAL GROUNDING & BONDING
877001-05	STEEL MAST ARM ASSEMBLY AND POLE 16' THROUGH 55'
878001-09	CONCRETE FOUNDATION DETAILS
880001-01	SPAN WIRE MOUNTED SIGNALS AND FLASHING BEACON INSTALLATION
880006-01	TRAFFIC SIGNAL MOUNTING DETAILS
886001-01	DETECTOR LOOP INSTALLATIONS

* DENOTES SPECIAL PROVISION
 ^ DENOTES SPECIALTY ITEM
 ^^ DENOTES CONSTRUCTION TYPE CODE Y080
 # DENOTES NON-PARTICIPATING ITEM

DATE: _____ BY: _____
 SURVEYED _____ PLOTTED _____
 PLAN _____ NOTE BOOK _____
 NO. _____

DATE: _____ BY: _____
 SURVEYED _____ PLOTTED _____
 PROFILE _____ NOTE BOOK _____
 NO. _____



USER NAME = #USER#	DESIGNED - RTM	REVISED - 11/07/12
PLOT SCALE = #SCALE#	DRAWN - JRR	REVISED - 12/28/12
PLOT DATE = #DATE#	CHECKED - RTM	REVISED -
	DATE - 10/22/12	REVISED -

**STATE OF ILLINOIS
DEPARTMENT OF TRANSPORTATION**

SUMMARY OF QUANTITIES

SHEET NO 1 OF 6 SHEETS

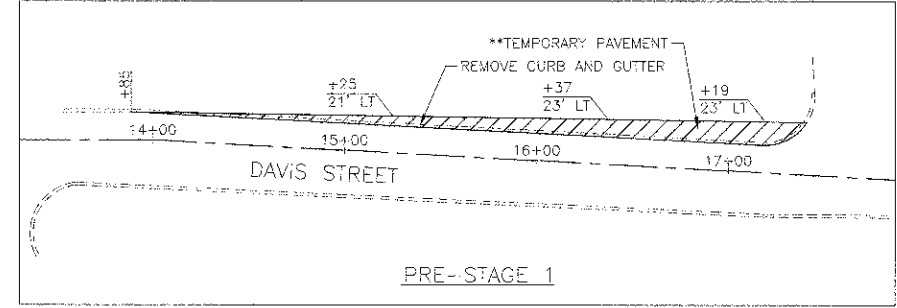
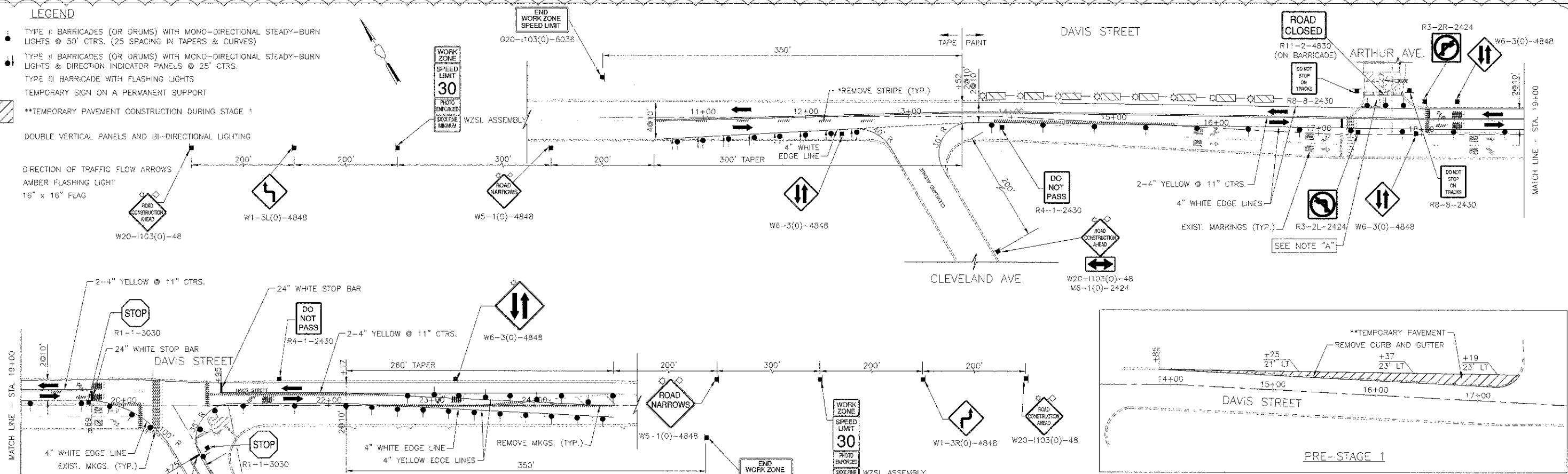
F.A.U. RTE.	SECTION	COUNTY	TOTAL SHEETS	SHEET NO.
3512	02-00177-00 WR	COOK	142	3
PROJECT NO. M-8003(426)		CONTRACT NO. 63514		
FED. ROAD DIST. NO. 1 ILLINOIS FED. AID PROJECT				

LEGEND

- TYPE II BARRICADES (OR DRUMS) WITH MONO-DIRECTIONAL STEADY-BURN LIGHTS @ 50' CTRS. (25' SPACING IN TAPERS & CURVES)
- TYPE II BARRICADES (OR DRUMS) WITH MONO-DIRECTIONAL STEADY-BURN LIGHTS & DIRECTION INDICATOR PANELS @ 25' CTRS.
- TYPE III BARRICADE WITH FLASHING LIGHTS
- TEMPORARY SIGN ON A PERMANENT SUPPORT
- ▨ **TEMPORARY PAVEMENT CONSTRUCTION DURING STAGE 1
- ▭ DOUBLE VERTICAL PANELS AND BI-DIRECTIONAL LIGHTING
- DIRECTION OF TRAFFIC FLOW ARROWS
- ⚡ AMBER FLASHING LIGHT
- 16" x 16" FLAG

DATE	BY
DATE	BY
DATE	BY

DATE	BY
DATE	BY
DATE	BY



RAILROAD CROSSING WILL BE CLOSED AT ARTHUR AVENUE BEGINNING

TEMPORARY INFORMATION SIGN

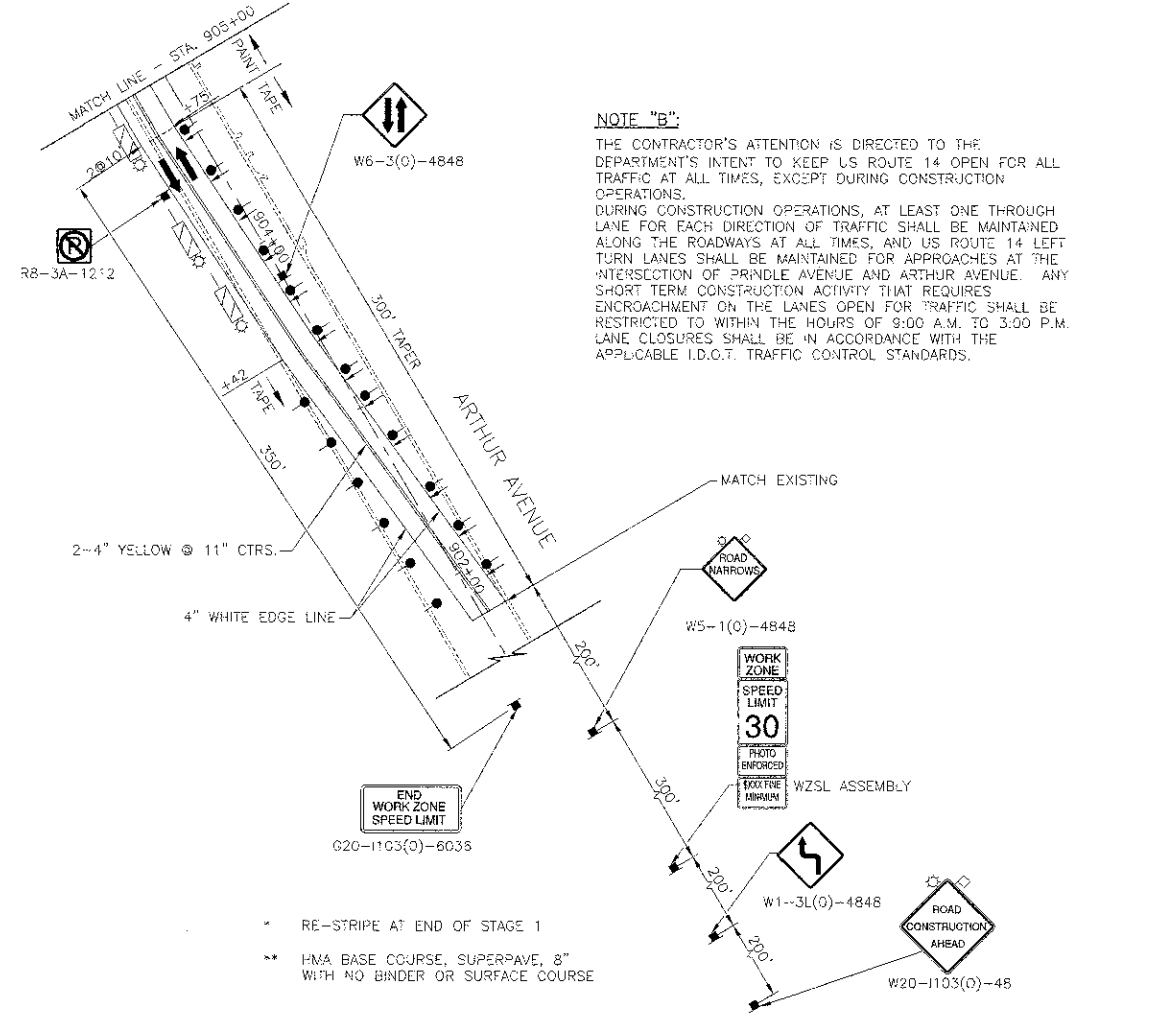
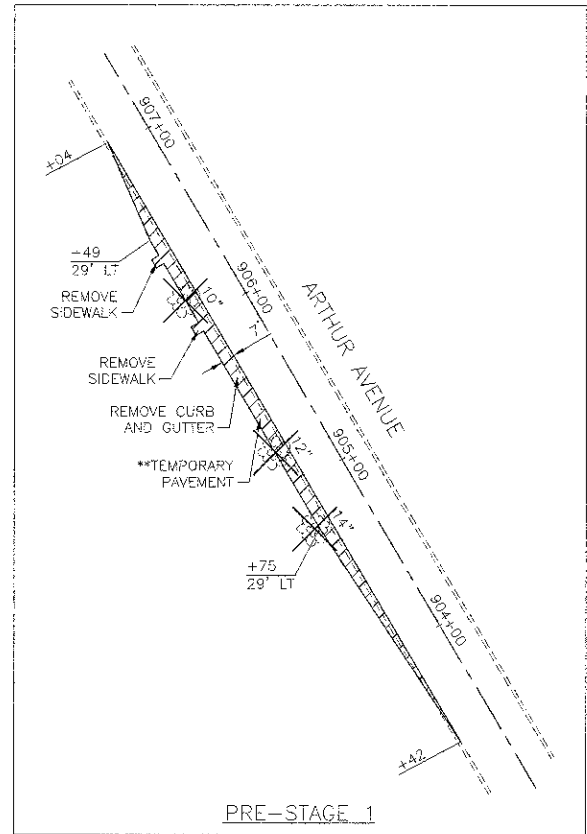
FOR DETAILS NOT SHOWN, SEE APPLICABLE PORTIONS OF DIST. 1 STANDARD TC-22 ("TEMPORARY INFORMATION SIGNING")

DETAIL "A"

NOTE "A":

CROSSING SHALL BE CLOSED AT THE DIRECTION OF THE UNION PACIFIC RAILROAD AND ENGINEER, AND REMAIN CLOSED DURING CONSTRUCTION UNTIL COMPLETED FULL-WIDTH ACROSS THE TRACKS. TO INCLUDE ALL PERMANENT LANE CONFIGURATIONS AND THE ASSOCIATED PERMANENT SIGNAL AND RAILROAD WARNING DEVICE SYSTEMS HAVE BEEN COMPLETED. AT LEAST ONE WEEK PRIOR TO CLOSING, TEMPORARY INFORMATION SIGNS SHALL BE ERRECTED AT LOCATIONS DESIGNATED BY THE ENGINEER. OPENING OF THE CROSSING SHALL NOT OCCUR UNTIL THE PERMANENT TRAFFIC SIGNAL AND RAILROAD WARNING DEVICES HAVE BEEN INSPECTED BY APPROPRIATE AGENCIES. (SEE DETAIL "A").

WHEN A GRADE CROSSING EXISTS EITHER WITHIN OR IN THE VICINITY OF A TEMPORARY TRAFFIC CONTROL ZONE, LANE RESTRICTIONS, FLAGGING, OR OTHER OPERATIONS SHALL NOT BE PERFORMED IN A MANNER THAT WOULD CAUSE HIGHWAY VEHICLES TO STOP ON THE RAILROAD OR LRT TRACKS, UNLESS A FLAGGER OR UNIFORMED LAW ENFORCEMENT OFFICER IS PROVIDED AT THE GRADE CROSSING TO MINIMIZE THE POSSIBILITY OF HIGHWAY VEHICLES STOPPING ON THE TRACKS, EVEN IF AUTOMATIC WARNING DEVICES ARE IN PLACE.



NOTE "B":

THE CONTRACTOR'S ATTENTION IS DIRECTED TO THE DEPARTMENT'S INTENT TO KEEP US ROUTE 14 OPEN FOR ALL TRAFFIC AT ALL TIMES, EXCEPT DURING CONSTRUCTION OPERATIONS. DURING CONSTRUCTION OPERATIONS, AT LEAST ONE THROUGH LANE FOR EACH DIRECTION OF TRAFFIC SHALL BE MAINTAINED ALONG THE ROADWAYS AT ALL TIMES, AND US ROUTE 14 LEFT TURN LANES SHALL BE MAINTAINED FOR APPROACHES AT THE INTERSECTION OF BRINDLE AVENUE AND ARTHUR AVENUE. ANY SHORT TERM CONSTRUCTION ACTIVITY THAT REQUIRES ENCROACHMENT ON THE LANES OPEN FOR TRAFFIC SHALL BE RESTRICTED TO WITHIN THE HOURS OF 9:00 A.M. TO 3:00 P.M. LANE CLOSURES SHALL BE IN ACCORDANCE WITH THE APPLICABLE I.D.O.T. TRAFFIC CONTROL STANDARDS.



DESIGNED - RTM	REVISIONS - 11/30/2012
DRAWN - JRR	REVISIONS - 12/28/2012
CHECKED - RTM	REVISIONS -
DATE - 10/22/12	REVISIONS -

STATE OF ILLINOIS
DEPARTMENT OF TRANSPORTATION

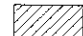



SUGGESTED CONSTRUCTION PROCEDURE TRAFFIC CONTROL DEVICES FOR STAGE 1

SHEET NO. 2 OF 2 SHEETS

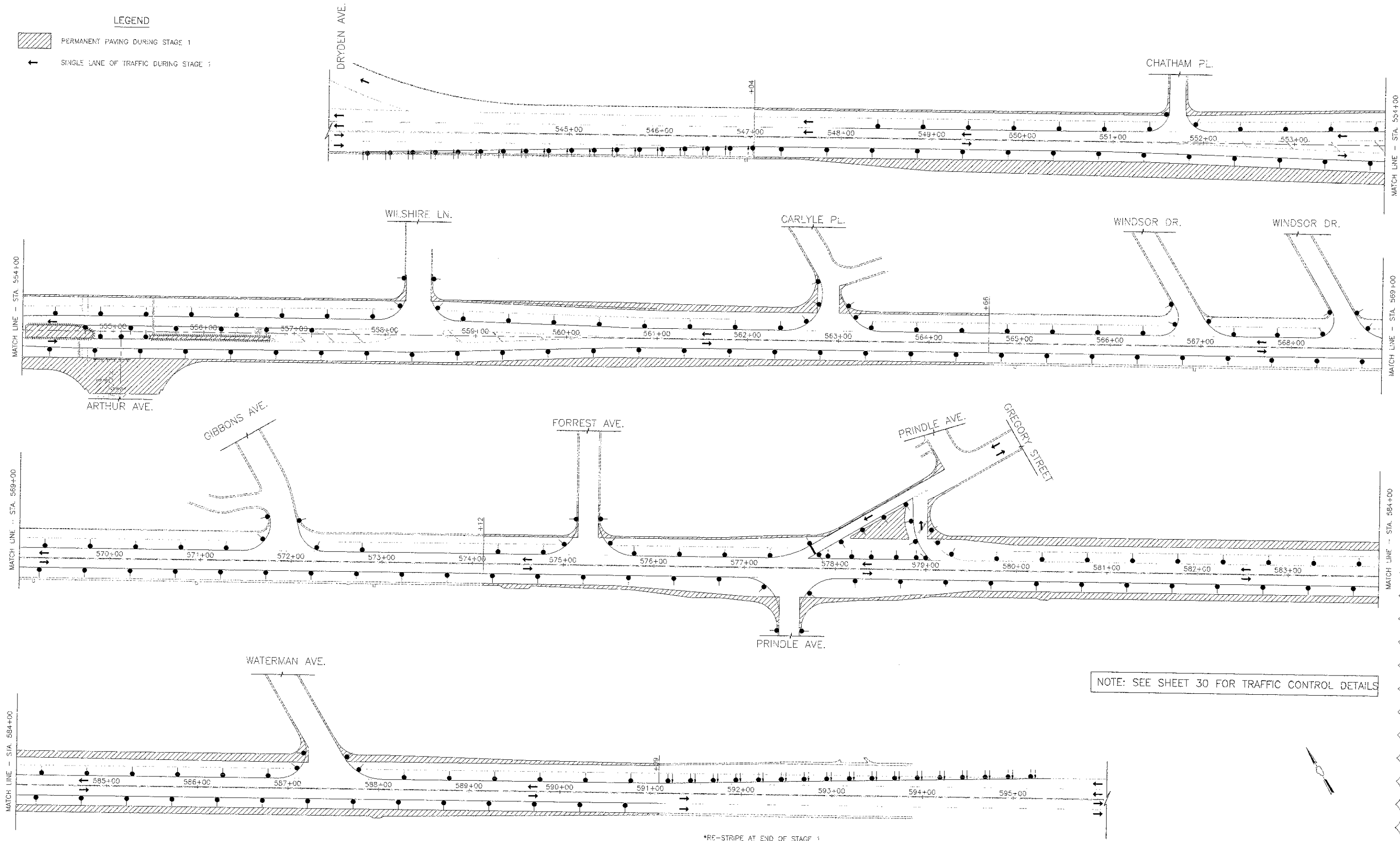
F.A.D. RTE.	SECTION	COUNTY	TOTAL SHEET NO.
3512	02-06177-00 WR	COOK	142 of 31
PROJECT NO. M-6003(426)	CONTRACT NO. 63514		
FED. ROAD DIST. NO. 1 ILLINOIS FED. AID PROJECT			

LEGEND

-  PERMANENT PAVING DURING STAGE 1
-  SINGLE LANE OF TRAFFIC DURING STAGE 1

DATE	
BY	
CHECKED	
PLANNED	
DESIGNED	
NOTED	
NO. 1	
NO. 2	
NO. 3	
NO. 4	
NO. 5	
NO. 6	
NO. 7	
NO. 8	
NO. 9	
NO. 10	
NO. 11	
NO. 12	
NO. 13	
NO. 14	
NO. 15	
NO. 16	
NO. 17	
NO. 18	
NO. 19	
NO. 20	
NO. 21	
NO. 22	
NO. 23	
NO. 24	
NO. 25	
NO. 26	
NO. 27	
NO. 28	
NO. 29	
NO. 30	
NO. 31	
NO. 32	
NO. 33	
NO. 34	
NO. 35	
NO. 36	
NO. 37	
NO. 38	
NO. 39	
NO. 40	
NO. 41	
NO. 42	
NO. 43	
NO. 44	
NO. 45	
NO. 46	
NO. 47	
NO. 48	
NO. 49	
NO. 50	
NO. 51	
NO. 52	
NO. 53	
NO. 54	
NO. 55	
NO. 56	
NO. 57	
NO. 58	
NO. 59	
NO. 60	
NO. 61	
NO. 62	
NO. 63	
NO. 64	
NO. 65	
NO. 66	
NO. 67	
NO. 68	
NO. 69	
NO. 70	
NO. 71	
NO. 72	
NO. 73	
NO. 74	
NO. 75	
NO. 76	
NO. 77	
NO. 78	
NO. 79	
NO. 80	
NO. 81	
NO. 82	
NO. 83	
NO. 84	
NO. 85	
NO. 86	
NO. 87	
NO. 88	
NO. 89	
NO. 90	
NO. 91	
NO. 92	
NO. 93	
NO. 94	
NO. 95	
NO. 96	
NO. 97	
NO. 98	
NO. 99	
NO. 100	

DATE	
BY	
CHECKED	
PLANNED	
DESIGNED	
NOTED	
NO. 1	
NO. 2	
NO. 3	
NO. 4	
NO. 5	
NO. 6	
NO. 7	
NO. 8	
NO. 9	
NO. 10	
NO. 11	
NO. 12	
NO. 13	
NO. 14	
NO. 15	
NO. 16	
NO. 17	
NO. 18	
NO. 19	
NO. 20	
NO. 21	
NO. 22	
NO. 23	
NO. 24	
NO. 25	
NO. 26	
NO. 27	
NO. 28	
NO. 29	
NO. 30	
NO. 31	
NO. 32	
NO. 33	
NO. 34	
NO. 35	
NO. 36	
NO. 37	
NO. 38	
NO. 39	
NO. 40	
NO. 41	
NO. 42	
NO. 43	
NO. 44	
NO. 45	
NO. 46	
NO. 47	
NO. 48	
NO. 49	
NO. 50	
NO. 51	
NO. 52	
NO. 53	
NO. 54	
NO. 55	
NO. 56	
NO. 57	
NO. 58	
NO. 59	
NO. 60	
NO. 61	
NO. 62	
NO. 63	
NO. 64	
NO. 65	
NO. 66	
NO. 67	
NO. 68	
NO. 69	
NO. 70	
NO. 71	
NO. 72	
NO. 73	
NO. 74	
NO. 75	
NO. 76	
NO. 77	
NO. 78	
NO. 79	
NO. 80	
NO. 81	
NO. 82	
NO. 83	
NO. 84	
NO. 85	
NO. 86	
NO. 87	
NO. 88	
NO. 89	
NO. 90	
NO. 91	
NO. 92	
NO. 93	
NO. 94	
NO. 95	
NO. 96	
NO. 97	
NO. 98	
NO. 99	
NO. 100	



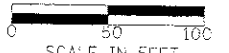
NOTE: SEE SHEET 30 FOR TRAFFIC CONTROL DETAILS

*RE-STRIPE AT END OF STAGE 1



USER NAME = #USR#	DESIGNED - RPN	REVISION
PLOT SCALE = #SCALE#	DRAWN - JRR	REVISED - (12/28/2012)
PLOT DATE = #DATE#	CHECKED - RTM	REVISED -
	DATE - 10/22/12	REVISED -

STATE OF ILLINOIS
DEPARTMENT OF TRANSPORTATION

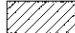




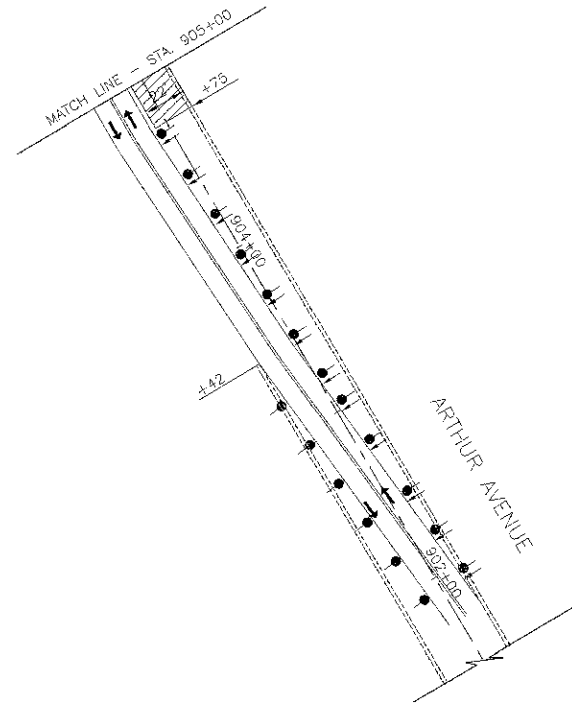
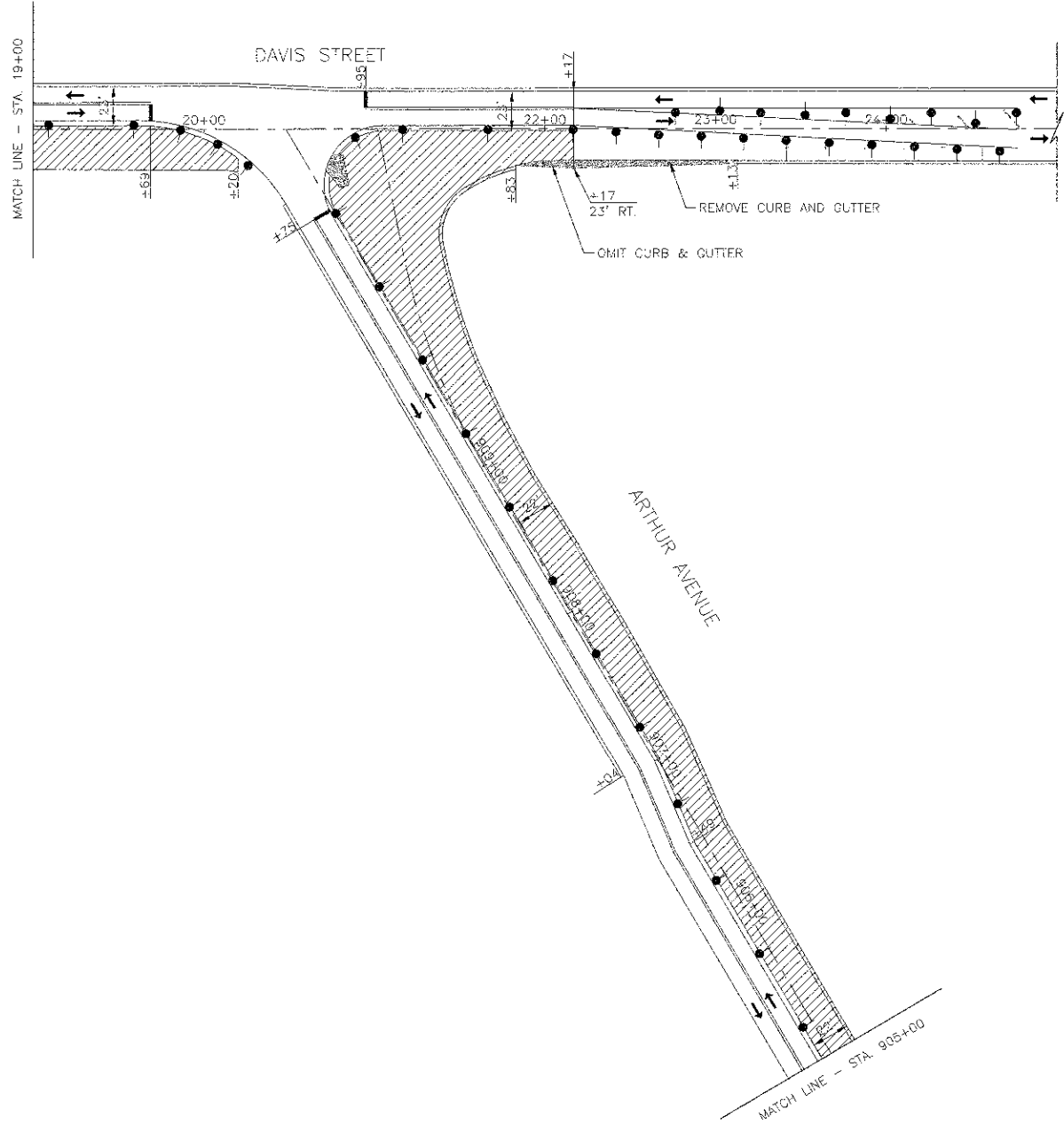
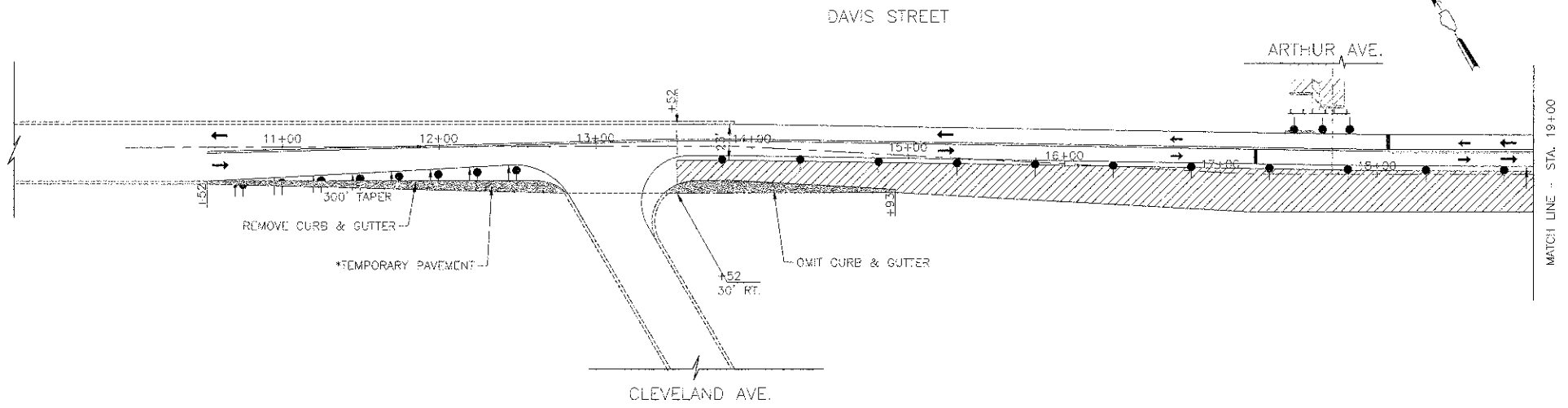
SUGGESTED CONSTRUCTION PROCEDURE
PAVEMENT CONSTRUCTION FOR STAGE 1

F.A.J. RFE.	SECTION	COUNTY	TOTAL SHEETS	SHEET NO.
3512	02-00177-00 WR	COOK	142	32
PROJECT NO. M-8003(426)		CONTRACT NO. 63514		
FED. ROAD DIST. NO. 1 ILLINOIS FED. AID PROJECT				

SHEET NO. 1 OF 2 SHEETS

LEGEND

-  PERMANENT PAVING DURING STAGE 1
-  *TEMPORARY PAVEMENT CONSTRUCTION DURING STAGE 1
-  SINGLE LANE OF TRAFFIC DURING STAGE 1
- *HOT-MIX ASPHALT BINDER COURSE, 8" WITH NO SURFACE COURSE



NOTE: SEE SHEET 31 FOR TRAFFIC CONTROL DETAILS

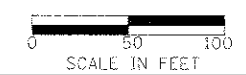
PLAN	SURVEYED	DATE
NOTE BOOK NO.	ALIGNED CHECKED	
	RT. OF WAY CHECKED	
	GRID FILE MARK	

PROFILE	SURVEYED	DATE
NOTE BOOK NO.	GRADES CHECKED	
	STRUCTURE IMPROVEMENTS CHECKED	



USER NAME = #USER#	DESIGNED - RTM	REVISED -
PLOT SCALE = #SCALE	DRAWN - JRR	REVISED - (12/28/2012)
PLOT DATE = #DATE#	CHECKED - RTM	REVISED -
	DATE - 10/22/12	REVISED -

STATE OF ILLINOIS
DEPARTMENT OF TRANSPORTATION

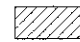
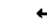


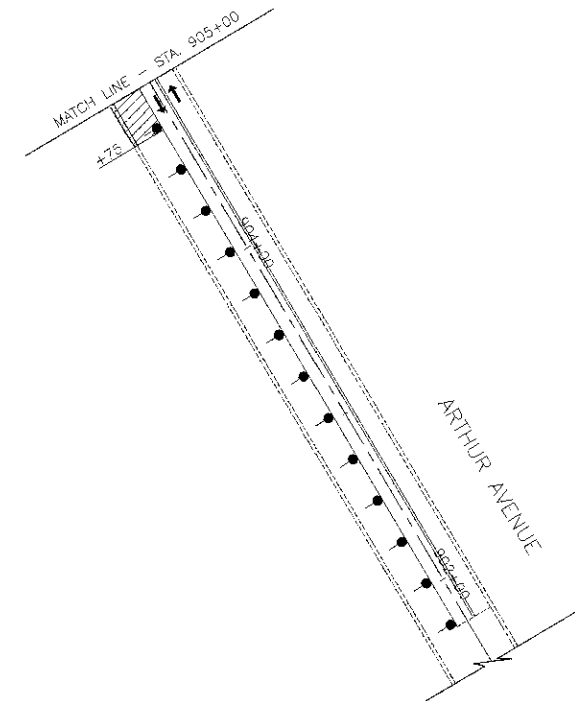
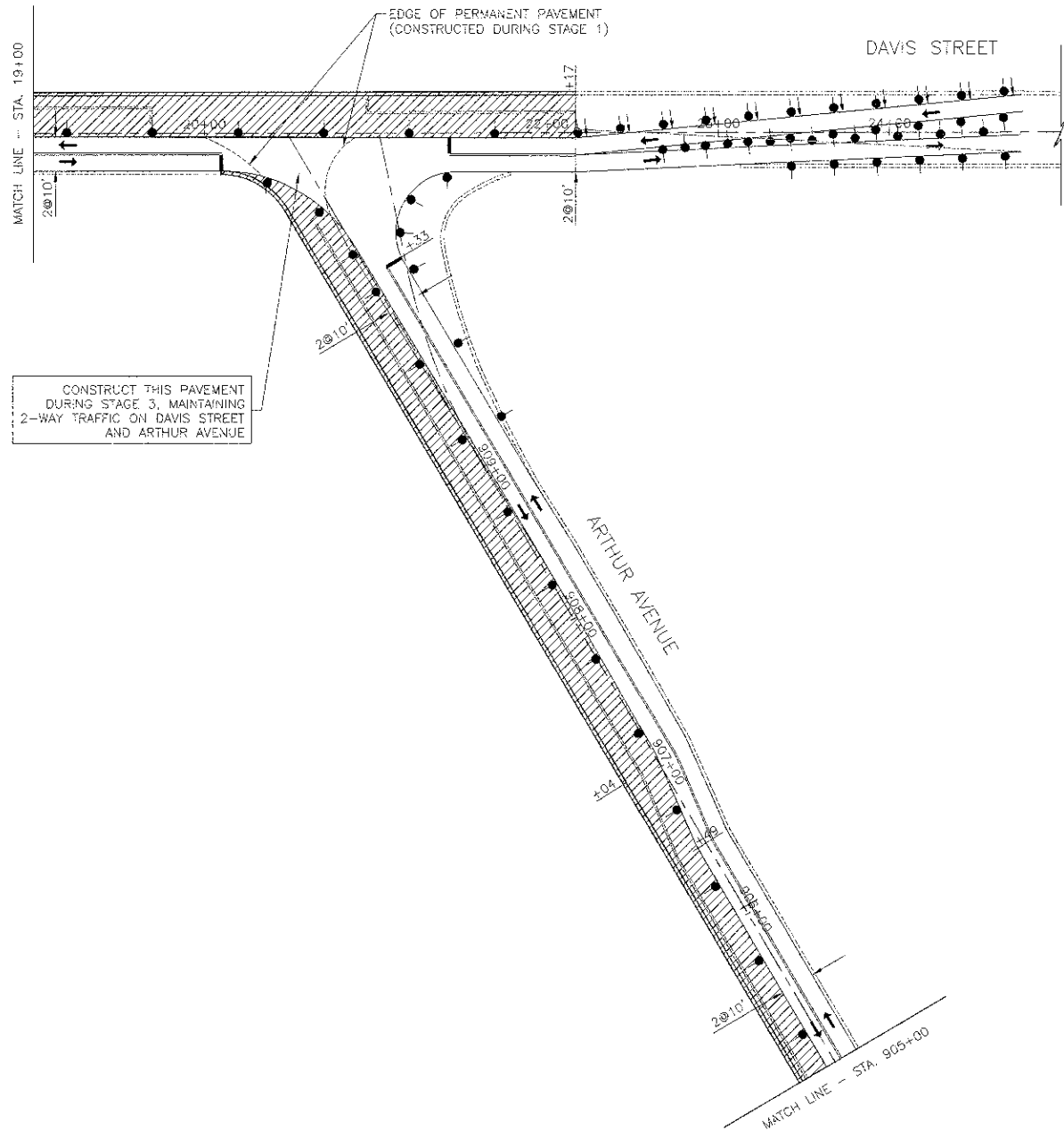
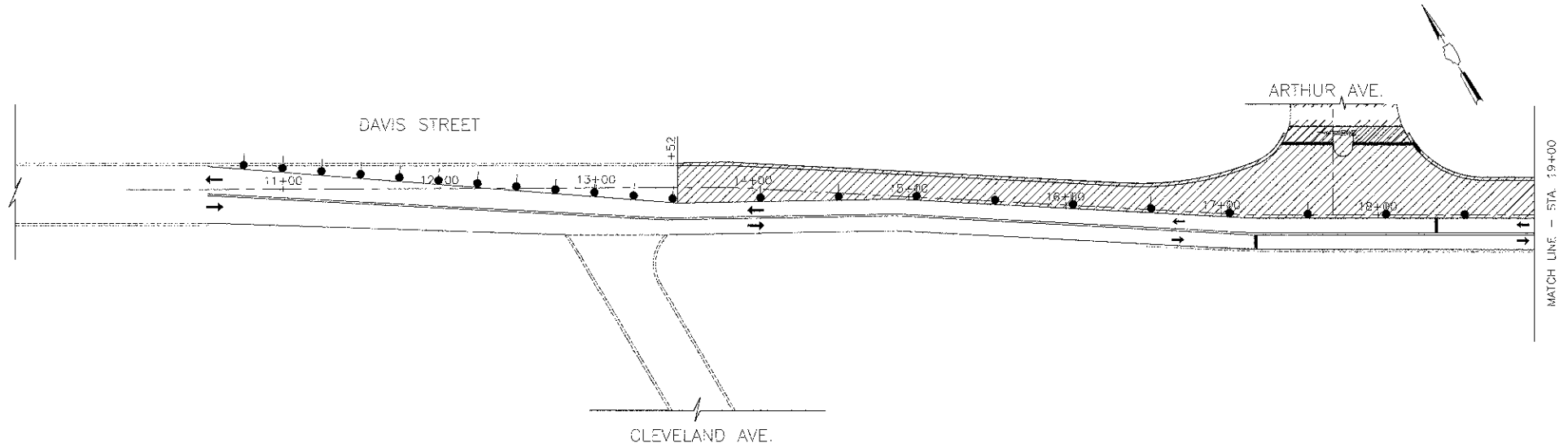
SUGGESTED CONSTRUCTION PROCEDURE
PAVEMENT CONSTRUCTION FOR STAGE 1

SHEET NO. 2 OF 2 SHEETS

F.A.U. RTE.	SECTION	COUNTY	TOTAL SHEETS	SHEET NO.
3512	02-00177-00 WR	COOK	142	53
PROJECT NO. M-8003(426)		CONTRACT NO. 63514		
FED. ROAD DIST. NO. 1 ILLINOIS FLD. AID PROJECT				

LEGEND

-  PERMANENT PAVING DURING STAGE 2
-  SINGLE LANE OF TRAFFIC DURING STAGE 2



CONSTRUCT THIS PAVEMENT DURING STAGE 3, MAINTAINING 2-WAY TRAFFIC ON DAVIS STREET AND ARTHUR AVENUE

NOTE: SEE SHEET 34 FOR TRAFFIC CONTROL DETAILS

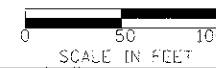
PLAN	SURVEYED	BY	DATE
	PLOTTED		
	CHECKED		
	NO. OF WAY CHECKED		
	ADD FILE NAME		

PROF. ILL.	SURVEYED	BY	DATE
	PLOTTED		
	CHECKED		
	NO. OF WAY CHECKED		
	ADD FILE NAME		



USER NAME = #USER#	DESIGNED - RTM	REVISED -
PLCT SCALE = #SCALE#	DRAWN - JRR	REVISED - 12/28/2012
PLOT DATE = #DATE#	CHECKED - RTM	REVISED -
	DATE - 10/22/12	REVISED -

STATE OF ILLINOIS
DEPARTMENT OF TRANSPORTATION



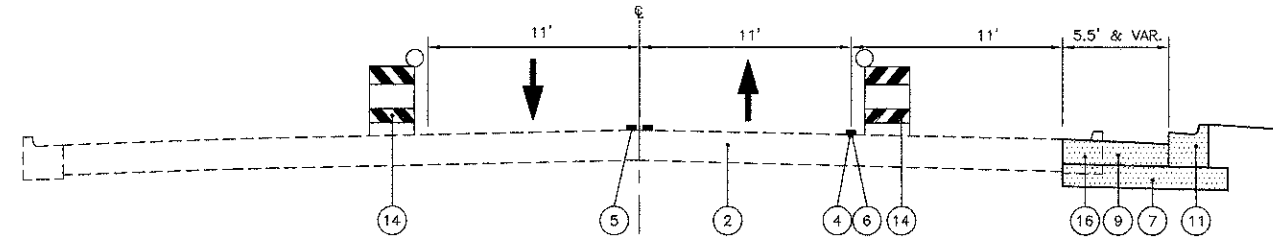
**SUGGESTED CONSTRUCTION PROCEDURE
PAVEMENT CONSTRUCTION FOR STAGE 2**

SHEET NO. 1 OF 1 SHEETS

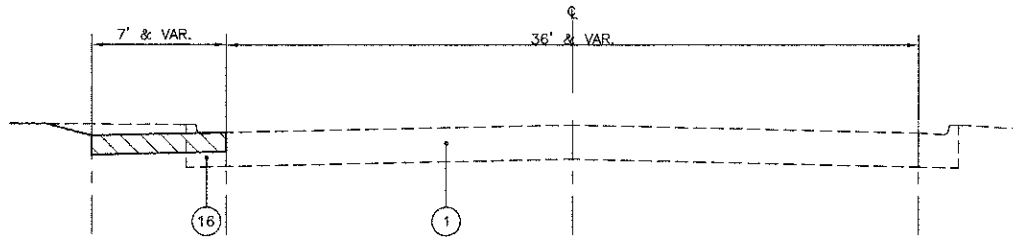
F.A.D. RTE.	SECTION	COUNTY	TOTAL SHEETS	SHEET NO.
3512	02-00177-00 WR	COOK	142	35
PROJECT NO. M-8003(426)		CONTRACT NO. 63514		
FED. ROAD DIST. NO. 1 ILLINOIS FED. AID PROJECT				

DATE: _____ BY: _____
 SURVEYED: _____ PLOTTED: _____ CHECKED: _____
 NOTE BOOK: _____ INT. OF WAY: _____
 NO. _____ PLOTTED FILE NAME: _____

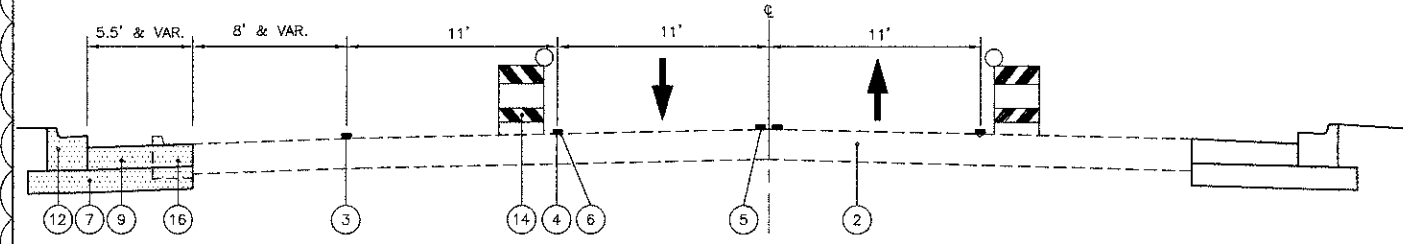
DATE: _____ BY: _____
 SURVEYED: _____ PLOTTED: _____ CHECKED: _____
 NOTE BOOK: _____ INT. OF WAY: _____
 NO. _____ PLOTTED FILE NAME: _____



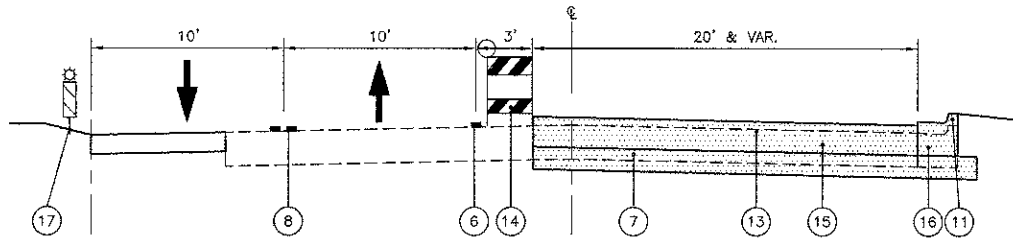
U.S. ROUTE 14 - STAGE 1A



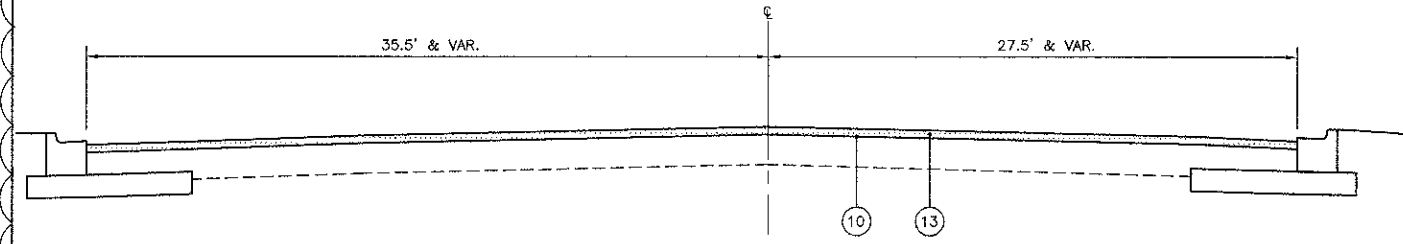
DAVIS ST. & ARTHUR AVE. - PRE-STAGE 1



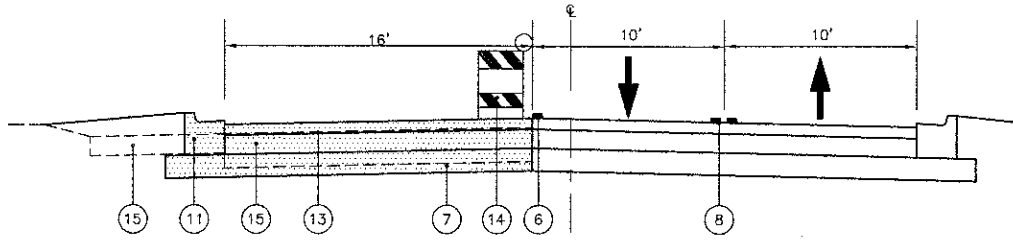
U.S. ROUTE 14 - STAGE 1B



DAVIS ST. & ARTHUR AVE. - STAGE 1



U.S. ROUTE 14 - STAGE 2



DAVIS ST. & ARTHUR AVE. - STAGE 2

LEGEND

- ① EXISTING BITUMINOUS PAVEMENT
- ② EXISTING CONCRETE PAVEMENT
- ③ EXISTING PAVEMENT MARKING (WHITE SOLID LINE)
- ④ EXISTING PAVEMENT MARKING (WHITE SKIP-DASH LINE)
- ⑤ EXISTING PAVEMENT MARKING (DOUBLE YELLOW LINE)
- ⑥ PROP. TEMPORARY PAVEMENT MARKING 4" WHITE (LINE)
- ⑦ PROP. AGGREGATE SUBGRADE IMPROVEMENT 12"
- ⑧ PROP. TEMPORARY PAVEMENT MARKING 4" YELLOW (DOUBLE LINE)
- ⑨ PROP. P.C. CONCRETE BASE COURSE, 10"
- ⑩ PROP. LEVELING BINDER, (MACHINE METHOD) N70 VAR. THICKNESS
- ⑪ PROP. COMB. CONCRETE CURB & GUTTER, TYPE B-6.18
- ⑫ PROP. COMB. CONCRETE CURB & GUTTER, TYPE M-4.1B
- ⑬ PROP. HOT-MIX ASPHALT BINDER COURSE, IL-19, N70 (6 1/4")
- ⑭ TYPE II BARRICADE (NON-METALLIC) W/ STEADY-BURN LIGHT
- ⑮ PAVEMENT REMOVAL
- ⑯ COMBINATION CURB & GUTTER REMOVAL
- ⑰ DOUBLE VERTICAL PANELS AND BI-DIRECTIONAL LIGHTING

- ➔ DIRECTION OF SINGLE LANE OF THRU TRAFFIC DURING STAGE
- ▨ TEMPORARY PAVEMENT WIDENING
- ▩ PERMANENT CONSTRUCTION DURING STAGE
- * HOT-MIX ASPHALT BINDER COURSE, 8" WITH NO SURFACE COURSE.
- ** SEE TYPICAL SECTIONS AND PLAN AND PROFILE SHEETS

NOTE "A": CROSSING SHALL BE CLOSED AT THE DIRECTION OF THE UNION PACIFIC RAILROAD AND ENGINEER, AND REMAIN CLOSED DURING CONSTRUCTION UNTIL COMPLETED FULL-WIDTH ACROSS THE TRACKS, TO INCLUDE ALL PERMANENT LANE CONFIGURATIONS AND THE ASSOCIATED PERMANENT SIGNAL AND RAILROAD WARNING DEVICE SYSTEMS HAVE BEEN COMPLETED. AT LEAST ONE WEEK PRIOR TO CLOSING, TEMPORARY INFORMATION SIGNS SHALL BE ERRECTED AT LOCATIONS DESIGNATED BY THE ENGINEER, OPENING OF THE CROSSING SHALL NOT OCCUR UNTIL THE PERMANENT TRAFFIC SIGNAL AND RAILROAD WARNING DEVICES HAVE BEEN INSPECTED BY APPROPRIATE AGENCIES. (SEE DETAIL "A"). WHEN A GRADE CROSSING EXISTS EITHER WITHIN OR IN THE VICINITY OF A TEMPORARY TRAFFIC CONTROL ZONE, LANE RESTRICTIONS, FLAGGING, OR OTHER OPERATIONS SHALL NOT BE PERFORMED IN A MANNER THAT WOULD CAUSE HIGHWAY VEHICLES TO STOP ON THE RAILROAD OR LRT TRACKS, UNLESS A FLAGGER OR UNIFORMED LAW ENFORCEMENT OFFICER IS PROVIDED AT THE GRADE CROSSING TO MINIMIZE THE POSSIBILITY OF HIGHWAY VEHICLES STOPPING ON THE TRACKS, EVEN IF AUTOMATIC WARNING DEVICES ARE IN PLACE.

NOTE "B": THE CONTRACTOR'S ATTENTION IS DIRECTED TO THE DEPARTMENT'S INTENT TO KEEP US ROUTE 14 OPEN FOR ALL TRAFFIC AT ALL TIMES, EXCEPT DURING CONSTRUCTION OPERATIONS.

DURING CONSTRUCTION OPERATIONS, AT LEAST ONE THROUGH LANE FOR EACH DIRECTION OF TRAFFIC SHALL BE MAINTAINED ALONG THE ROADWAYS AT ALL TIMES, AND US ROUTE 14 LEFT TURN LANES SHALL BE MAINTAINED FOR APPROACHES AT THE INTERSECTION OF PRINDLE AVENUE AND ARTHUR AVENUE. ANY SHORT TERM CONSTRUCTION ACTIVITY THAT REQUIRES ENCROACHMENT ON THE LANES OPEN FOR TRAFFIC SHALL BE RESTRICTED TO WITHIN THE HOURS OF 9:00 A.M. TO 3:00 P.M. LANE CLOSURES SHALL BE IN ACCORDANCE WITH THE APPLICABLE I.D.O.T. TRAFFIC CONTROL STANDARDS.

CONSTRUCTION SEQUENCE

THE CONTRACTOR SHALL CONTACT THE DISTRICT ONE TRAFFIC CONTROL SUPERVISOR @ (847) 705-4470 A MINIMUM OF 72 HOURS IN ADVANCE OF BEGINNING WORK.

- PRE-STAGE 1**
1. ERECT ALL ADVANCED CONSTRUCTION SIGNING.
 2. ERECT DETOUR SIGNS AND ACTIVATE DETOUR. (SEE NOTE "A")
 3. ERECT TYPE II BARRICADES AND CLOSE ARTHUR AVENUE R.R. CROSSING. (SEE NOTE "A")
 4. TURN OFF AND COVER TRAFFIC SIGNALS AT ARTHUR AVENUE INTERSECTIONS WITH U.S. ROUTE 14 AND DAVIS STREET, MOVE FIRE HYDRANT AND INSTALL TEMPORARY SIGNALS AND LIGHTING.
 5. REMOVE CURB AND GUTTER, MOVE FIRE HYDRANTS, AND CONSTRUCT TEMPORARY PAVEMENT WIDENING ON NORTH SIDE OF DAVIS STREET AND WEST SIDE OF ARTHUR AVENUE.
 6. REMOVE RAISED REFLECTIVE PAVEMENT MARKERS ON U.S. ROUTE 14
 7. REMOVE CONFLICTING PAVEMENT MARKINGS AND PLACE TEMPORARY MARKINGS. ERECT BARRICADES AND TEMPORARY TRAFFIC SIGNS AND SHIFT TRAFFIC. (SEE NOTE "B")

- STAGE 1A AND B**
1. INSTALL DRAINAGE STRUCTURES AND CONSTRUCT PAVEMENT WIDENING AND MEDIAN REPLACEMENT, CURB AND GUTTER AND SIDEWALKS ON U.S. ROUTE 14.
 2. INSTALL DRAINAGE STRUCTURES AND CONSTRUCT BASE COURSE, BINDER COURSE, CURB AND GUTTER, DRIVEWAYS AND SIDEWALKS ON SOUTH SIDE OF DAVIS STREET AND EAST SIDE OF ARTHUR AVENUE.
 3. CONSTRUCT TEMPORARY PAVEMENT WIDENING AT TWO LOCATIONS ON SOUTH SIDE OF DAVIS STREET.
 4. BEGIN TRAFFIC SIGNAL WORK AT ARTHUR AVENUE INTERSECTIONS WITH U.S. ROUTE 14 AND DAVIS STREET (WEST).
 5. REMOVE CONFLICTING PAVEMENT MARKINGS, BARRICADES AND TEMPORARY SIGNS ON U.S. ROUTE 14. PLACE TEMPORARY PAVEMENT MARKINGS AS DIRECTED BY THE ENGINEER AND RE-OPEN ALL LANES TO TRAFFIC.
 6. REMOVE CONFLICTING PAVEMENT MARKINGS AND PLACE TEMPORARY MARKINGS, RELOCATE BARRICADES, ADJUST TEMPORARY SIGNING AND SHIFT TRAFFIC ON DAVIS STREET AND ARTHUR AVENUE.

- STAGE 2**
1. PLACE LEVELING BINDER AND BINDER COURSE ON U.S. ROUTE 14, MAINTAINING TRAFFIC AS PER STANDARD 701427, AND PLACE TEMPORARY PAVEMENT MARKING TAPE AS REQUIRED (NOT ILLUSTRATED).
 2. INSTALL DRAINAGE STRUCTURES AND CONSTRUCT BASE COURSE AND BINDER COURSE, CURB AND GUTTER, DRIVEWAYS AND SIDEWALK ON NORTH SIDE OF DAVIS STREET AND WEST SIDE OF ARTHUR AVENUE.
 3. REMOVE TEMPORARY PAVEMENT WIDENING AND REPLACE CURB AND GUTTER ON WEST SIDE OF ARTHUR AVENUE SOUTH OF STA. 904+75.
 4. REMOVE CONFLICTING PAVEMENT MARKINGS, BARRICADES AND TEMPORARY SIGNS ON DAVIS STREET AND ARTHUR AVENUE, PLACE TEMPORARY PAVEMENT MARKINGS AS DIRECTED BY THE ENGINEER AND RE-OPEN ALL LANES TO TRAFFIC. (NOTE: ARTHUR AVENUE R.R. CROSSING SHALL REMAIN CLOSED.)

- STAGE 3 (NOT ILLUSTRATED)**
1. PLACE SURFACE COURSE TO FINISHED GRADE ON U.S. ROUTE 14, MAINTAINING TRAFFIC AS PER STANDARD 701427, AND PLACE TEMPORARY PAVEMENT MARKING TAPE AS REQUIRED.
 2. CONSTRUCT REMAINING BASE COURSE AND BINDER COURSE AT EASTERLY INTERSECTION OF DAVIS STREET AND ARTHUR AVENUE.
 3. REMOVE TEMPORARY PAVEMENT WIDENING AND REPLACE CURB AND GUTTER AT TWO LOCATIONS ON SOUTH SIDE OF DAVIS STREET.
 4. PLACE SURFACE COURSE TO FINISHED GRADE ON DAVIS STREET AND ARTHUR AVENUE, MAINTAINING TRAFFIC AS PER STANDARD 701501, AND PLACE TEMPORARY PAVEMENT MARKING TAPE AS REQUIRED.
 5. COMPLETE TRAFFIC SIGNAL INSTALLATION AT ARTHUR AVENUE INTERSECTIONS WITH U.S. ROUTE 14 AND DAVIS AVENUE (WEST).
 6. INSTALL ALL PERMANENT PAVEMENT MARKINGS AND RAISED REFLECTIVE PAVEMENT MARKERS.
 7. REMOVE BARRICADES AND ACTIVATE TRAFFIC SIGNALS AT ARTHUR AVENUE INTERSECTIONS WITH U.S. ROUTE 14 AND DAVIS STREET (WEST), AND RE-OPEN R.R. CROSSING. (NOTE: THIS STEP IS CONTINGENT UPON COMPLETION OF ALL CROSSING WORK BY THE U.P.R.R., AND REQUIRES CLOSE COORDINATION WITH THE RAILROAD.)
 8. COMPLETE PROPOSED STREET LIGHTING WORK.
 9. REMOVE DETOUR SIGNS AND ALL TEMPORARY PAVEMENT MARKINGS AND CONSTRUCTION SIGNS.
 10. COMPLETE ALL LANDSCAPING AND CLEAN-UP WORK.



DESIGNED - RTM	REVISIONS
DRAWN - JRR	REVISED - 12/28/2012
CHECKED - RTM	REVISED -
DATE - 10/22/12	REVISED -

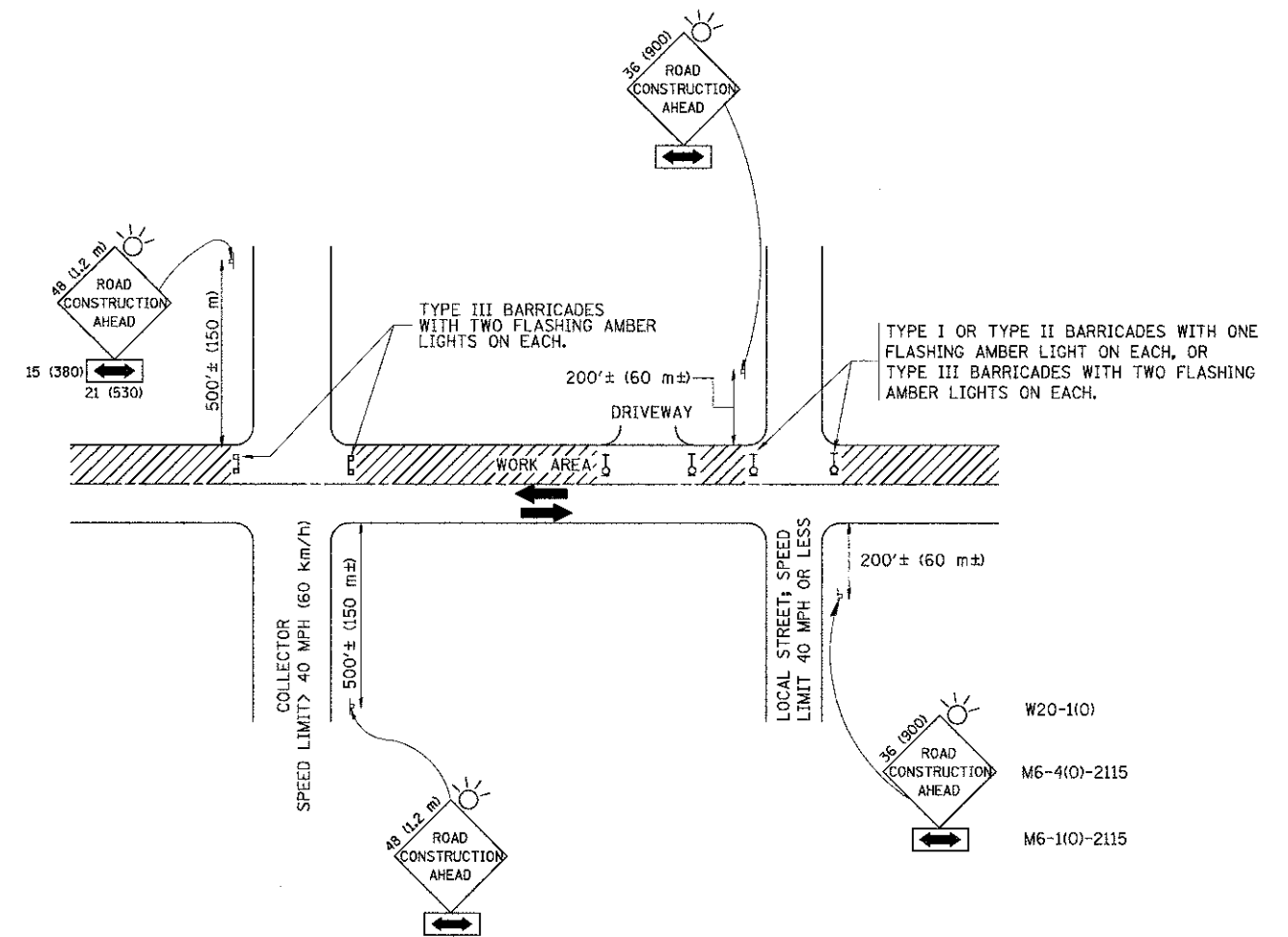
STATE OF ILLINOIS
 DEPARTMENT OF TRANSPORTATION

NOT TO SCALE

SUGGESTED CONSTRUCTION PROCEDURE
 TYPICAL SECTIONS

F.A.D. RTE.	SECTION	COUNTY	TOTAL SHEETS	SHEET NO.
3512	02-00177-00 WR	COOK	142	36
PROJECT NO. M-80031426		CONTRACT NO. 63514		
FED. ROAD DIST. NO. 1 ILLINOIS FED. AID PROJECT				

SHEET NO. 1 OF 1 SHEETS



TRAFFIC CONTROL AND PROTECTION FOR SIDE ROADS, INTERSECTIONS, AND DRIVEWAYS

NOTES:

- A. FOR NO LANE RESTRICTION ON THE SIDE ROAD OR DRIVEWAYS
 1. SIDE ROAD WITH A SPEED LIMIT OF 40 MPH (60 km/h) OR LESS AS SHOWN ON THE DRAWING AND AS DIRECTED BY THE ENGINEER:
 - a) ONE ROAD CONSTRUCTION AHEAD SIGN 36 x 36 (900x900) WITH A FLASHER AND FLAG MOUNTED ON IT APPROXIMATELY 200' (60 m) IN ADVANCE OF THE MAIN ROUTE.
 - b) THE CLOSED PORTION OF THE MAIN ROUTE SHALL BE PROTECTED BY BLOCKING WITH TYPE I, TYPE II OR TYPE III BARRICADES, 1/3 OF THE CROSS SECTION OF THE CLOSED PORTION.
 2. SIDE ROAD WITH A SPEED LIMIT GREATER THAN 40 MPH (60 km/h) AS SHOWN ON THE DRAWING AND AS DIRECTED BY THE ENGINEER:
 - a) ONE ROAD CONSTRUCTION AHEAD SIGN 48 x 48 (1.2 m x 1.2 m) WITH A FLASHER MOUNTED ON IT APPROXIMATELY 500' (150 m) IN ADVANCE OF THE MAIN ROUTE.
 - b) THE CLOSED PORTION OF THE MAIN ROUTE SHALL BE PROTECTED BY BLOCKING WITH TYPE III BARRICADES, 1/2 OF THE CROSS SECTION OF THE CLOSED PORTION.
 3. WHEN THE SIDE ROAD LIES BETWEEN THE BEGINNING OF THE MAINLINE SIGNING AND THE WORK ZONE, A SINGLE HEADED ARROW (M6-1) SHALL BE USED IN LIEU OF THE DOUBLE HEADED ARROW (M6-4).
- B. FOR A LANE CLOSURE ON A SIDE ROAD OR DRIVEWAY:

USE APPLICABLE PORTIONS OF THE TYPICAL APPLICATION OF TRAFFIC CONTROL DEVICES (STD. 701501, STD. 701606 OR THE APPROPRIATE STANDARD). THE SPACING OF SIGNS AND BARRICADES SHALL BE ADJUSTED FOR FIELD CONDITIONS AS DIRECTED BY THE ENGINEER. THE DIRECTIONAL ARROW SHALL BE COVERED OR REMOVED WHEN NO LONGER CONSISTENT WITH THE SIDE ROAD LANE CLOSURE.
- C. ADVANCE WARNING SIGNS ARE TO BE OMITTED ON DRIVEWAY UNLESS OTHERWISE NOTED.
- D. THE TRAFFIC CONTROL AND PROTECTION FOR SIDE ROADS, INTERSECTIONS, AND DRIVEWAYS SHALL BE INCIDENTAL TO THE COST OF SPECIFIED TRAFFIC CONTROL STANDARDS OR ITEMS.

All dimensions are in millimeters (inches) unless otherwise shown.

FILE NAME = W:\data\td\22x34\to10.dgn	USER NAME = geglanoht	DESIGNED - LHA	REVISED - J. OBERLE 10-18-95	STATE OF ILLINOIS DEPARTMENT OF TRANSPORTATION	TRAFFIC CONTROL AND PROTECTION FOR SIDE ROADS, INTERSECTIONS, AND DRIVEWAYS			Added 1/8/13		F.A. RTE. 3512	SECTION 02-00177-00-WR	COUNTY COOK	TOTAL SHEETS 142	SHEET NO. 116A
	PLOT SCALE = 50.000' / IN.	CHECKED -	REVISED - A. HOUSEH 03-06-96		SCALE: NONE	SHEET NO. 1 OF 1 SHEETS	STA.	TO STA.	TC-10		CONTRACT NO. 63514			
	PLOT DATE = 1/4/2008	DATE - 06-89	REVISED - A. HOUSEH 10-15-96						FED. ROAD DIST. NO. 1		ILLINOIS FED. AID PROJECT			
			REVISED - T. RAMMACHER 01-06-00						ILLINOIS FED. AID PROJECT					

ROUTE MARKERS

FOR U.S. ROUTES
M1-40-2424

FOR ILLINOIS ROUTES
M1-50-2424

R.R. UNMARKED ROUTES
SPECIAL 24" x 18" VARIABLE
4" BLACK LETTERS ON WHITE
REFLECTIVE BACKGROUND

ARROWS SIGNS

M5-1L-2115

M5-1R-2115

M6-1-2115

M6-1-2115

M6-3-2115

CARDINAL DIRECTION & DETOUR SIGNS

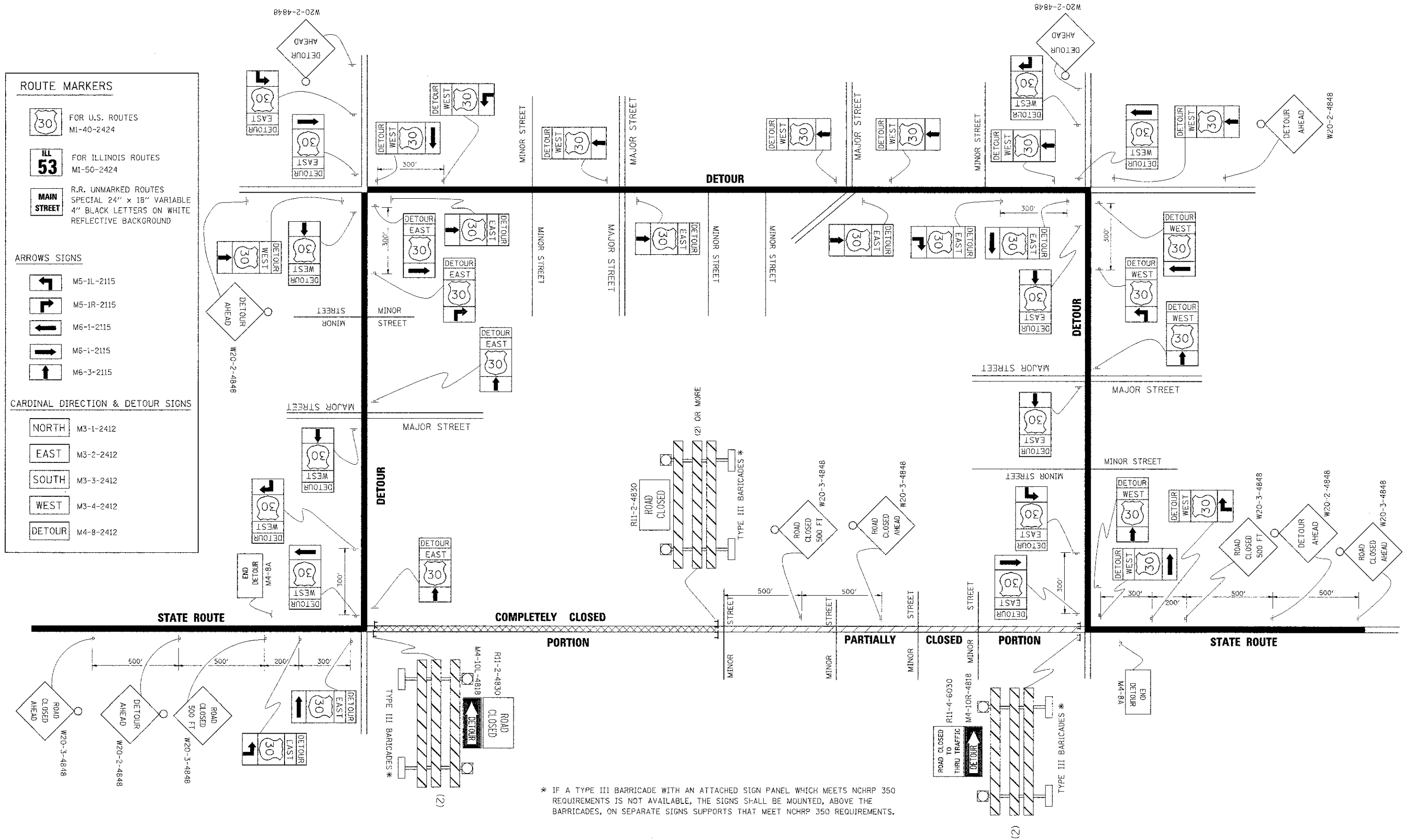
NORTH M3-1-2412

EAST M3-2-2412

SOUTH M3-3-2412

WEST M3-4-2412

DETOUR M4-8-2412



* IF A TYPE III BARRICADE WITH AN ATTACHED SIGN PANEL WHICH MEETS NCHRP 350 REQUIREMENTS IS NOT AVAILABLE, THE SIGNS SHALL BE MOUNTED, ABOVE THE BARRICADES, ON SEPARATE SIGNS SUPPORTS THAT MEET NCHRP 350 REQUIREMENTS.

FILE NAME =	USER NAME = drv\valhsgn	DESIGNED -	REVISED - 10-18-02	STATE OF ILLINOIS DEPARTMENT OF TRANSPORTATION	DETOUR SIGNING FOR CLOSING STATE HIGHWAYS		Added 11/8/13	F.A. RTE. 3512	SECTION 02-00177-00-WR	COUNTY COOK	TOTAL SHEETS 142	SHEET NO. 120A
DRWN -	CHKD -	DATE -	REVISED - R. BORO 09-14-09		SCALE: NONE	SHEET NO. 1 OF 1 SHEETS	STA. TO STA.	TC-21		CONTRACT NO. 63514		
PLOT SCALE = 49,9999' / IN.					FED. ROAD DIST. NO. 1 ILLINOIS FED. AID PROJECT							
PLOT DATE = 9/14/2009												