

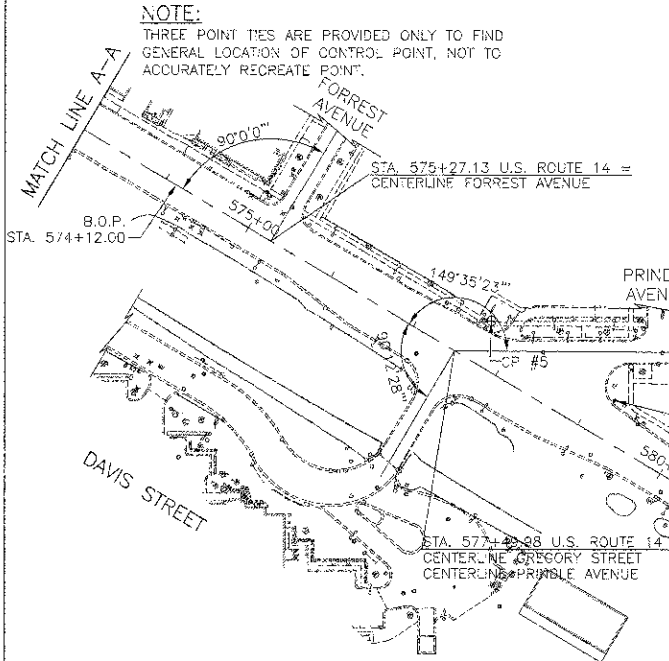
DATE	
BY	
REVISIONS	
NO.	
DATE	
BY	
REVISIONS	
NO.	
DATE	
BY	
REVISIONS	
NO.	

DATE	
BY	
REVISIONS	
NO.	
DATE	
BY	
REVISIONS	
NO.	
DATE	
BY	
REVISIONS	
NO.	

CONTROL POINTS

C.P. #	NORTHING	EASTING	STATION	OFFSET	DESCRIPTION
1	1970954.2290	1083485.9716	551+42.47	28.53' RT	5/8" IR W/CAP
2	1970568.0659	1084084.0694	558+43.68	33.38' RT	5/8" IR W/CAP
3	1970225.8152	1084868.1921	567+02.90	50.04' LT	5/8" IR W/CAP
4	1970089.4206	1084943.7807	568+37.49	28.71' RT	5/8" IR W/CAP
5	1969679.8850	1085781.7600	577+67.15	46.51' LT	1/2" IP
6	1969465.0799	1085996.4132	580+61.35	28.75' RT	5/8" IR W/CAP
7	1969228.2821	1086395.1717	585+28.56	26.97' RT	5/8" IR W/CAP
8	1968916.4044	1086920.5547	591+36.09	29.41' RT	5/8" IR W/CAP
9	1970913.2597	1083345.7623	13+04.61	17.00' LT	5/8" IR W/CAP
10	1970555.5769	1083956.7165	20+13.01	37+94' LT	5/8" IR W/CAP
11	1970503.0154	1084033.8151	21+08.12	31.96' LT	5/8" IR W/CAP
12	1969656.8808	1083926.8810	902+80.95	39.54' LT	1/2" IP
13	1970085.8627	1083993.8462	907+10.02	26.86' RT	5/8" IR W/CAP
14	1970400.1486	1083927.8591	910+10.09	56.88' LT	1/2" IP

NOTE:
THREE POINT TIES ARE PROVIDED ONLY TO FIND GENERAL LOCATION OF CONTROL POINT, NOT TO ACCURATELY RECREATE POINT.



BENCH MARKS

NO.	DESCRIPTION	ELEVATION	STATION
B.M. #1	Village of Arlington Heights Bench Mark Monument 59" Brass Disc on South Side of a Concrete Base for Light Pole ±24' Southwesterly of the Center Line of Davis Street and ±43' Easterly of the Center Line of Roosevelt Avenue, located one block west of Cleveland, in the Southeast Corner of the intersection.	683.48 N.A.V.D. 1988	N/A
B.M. #2	Railroad Spike (Set) in Power Pole with Light.	677.81	903+10(±) RT
B.M. #3	Railroad Spike (Set) in Power Pole in the Northeast Quadrant of the intersection of Northwest Highway and Gregory Street.	670.90	579+20(±) LT
B.M. #4	Railroad Spike (Set) in Power Pole in the Northwest Quadrant of the intersection of Northwest Highway and Waterman Avenue.	675.32	587+10(±) LT
B.M. #5	Cross Cut (set) in North Flange Bolt of Fire Hydrant.	681.96	595+00(±) LT

BASELINE COORDINATES - U.S. ROUTE 14

STATION	DESCRIPTION	NORTHING	EASTING
544+00.00	B.O.A. (U.S. RT. 14)	1971357.51	1082861.93
555+08.83	Q-C (U.S. RT. 14/ RAILROAD CROSSING)	1970791.88	1083815.64
567+65.19	P.I.	1969130.77	1086616.46
596+00.00	E.O.A. (U.S. RT. 14)	1968705.23	1087334.67

BASELINE COORDINATES - DAVIS STREET

STATION	DESCRIPTION	NORTHING	EASTING
10+00.00	B.O.P. (DAVIS ST.)	1971053.12	1083074.62
13+84.91	P.I.	1970657.88	1083406.34
17+18.76	P.I.	1970672.74	1083684.15
17+71.08	Q-C (DAVIS ST./ RAILROAD CROSSING)	1970646.10	1083729.18
20+48.02	Q-C (DAVIS ST./ ARTHUR AVENUE-LT.)	1970505.09	1083967.54
21+01.94	Q-C (DAVIS ST./ ARTHUR AVENUE-RT.)	1970477.64	1084013.94
25+00.00	E.O.A. (DAVIS ST.)	1970274.97	1084356.54

BASELINE COORDINATES - ARTHUR AVENUE

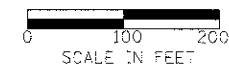
STATION	DESCRIPTION	NORTHING	EASTING
900+00.00	B.O.A.-RT. (ARTHUR AVE.)	1969375.88	1083966.05
908+99.53	P.C.	1970275.41	1083967.23
909+66.04	P.I.	1970341.93	1083967.32
910+31.36	P.T.	1970404.83	1083968.93
911+08.34	E.O.A.-RT. (ARTHUR AVE.) AND Q-C (DAVIS ST./ARTHUR AVE.)	1970477.64	1084013.94
108+99.53	B.O.A.-LT. (ARTHUR AVE.)	1970275.41	1083967.23
111+29.21	E.O.A.-LT. (ARTHUR AVE.)	1970505.09	1083967.54

BASELINE COORDINATES - RAILROAD CROSSING

STATION	DESCRIPTION	NORTHING	EASTING
200+00.00	B.O.A. AND Q-C (DAVIS ST./ RAILROAD CROSSING)	1970646.01	1083729.32
201+69.50	E.O.A. AND Q-C (U.S. RT. 14/ RAILROAD CROSSING)	1970791.80	1083815.78

CURVE #1
 $\Delta = 16^{\circ} 52' 56''$
 $D = 14' 19' 26''$
 $T = 66.52'$
 $R = 400.00'$
 $L = 131.83'$
 $C = 131.23'$
 $E = 5.49'$
P.C. STA. = 908+99.53
P.I. STA. = 909+66.04
P.T. STA. = 910+31.36

NOTES:
EXISTING ROADWAY CONFIGURATION SHOWN
B.O.A. = BEGINNING OF ALIGNMENT
B.O.P. = BEGINNING OF PROJECT
P.C. = POINT OF CURVATURE
P.C.C. = POINT OF COMMON CURVATURE
P.T. = POINT OF TANGENT
P.I. = POINT OF INTERSECTION
E.O.A. = END OF ALIGNMENT
E.O.P. = END OF PROJECT
C.P. = CONTROL POINT
B.M. = BENCH MARK



USER NAME = #USER#	DESIGNED - RTM	REVISIONS -
PLT SCALE = #SCALE#	DRAWN - JRR	REVISIONS -
PLT DATE = #DATE#	CHECKED - RTM	REVISIONS -
	DATE - 10/22/12	REVISIONS -

STATE OF ILLINOIS
DEPARTMENT OF TRANSPORTATION

ALIGNMENT, TIES AND BENCHMARKS

SHEET NO. 1 OF 1 SHEETS

F.A.U. RTE.	SECTION	COUNTY	TOTAL SHEETS	SHEET NO.
3512	G2-00177-00 WR	COOK	142	17
PROJECT NO. M-8003(426)			CONTRACT NO. 63514	
FED. ROAD DIST. NO. 1 ILLINOIS FED. AID PROJECT				