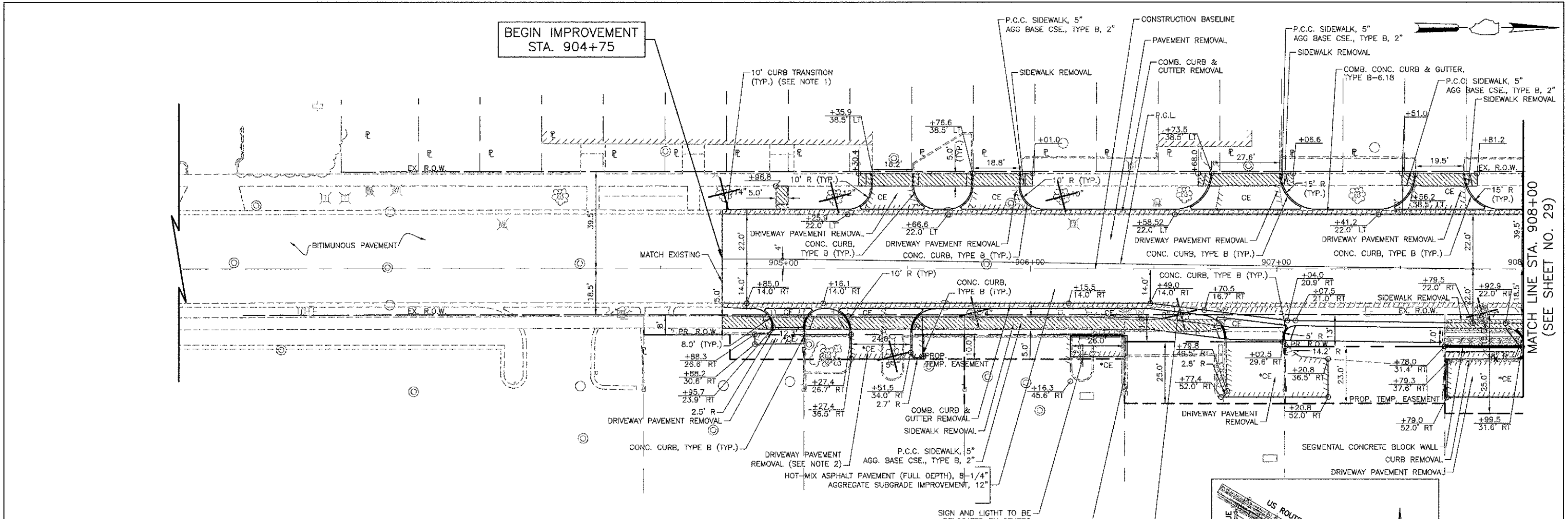


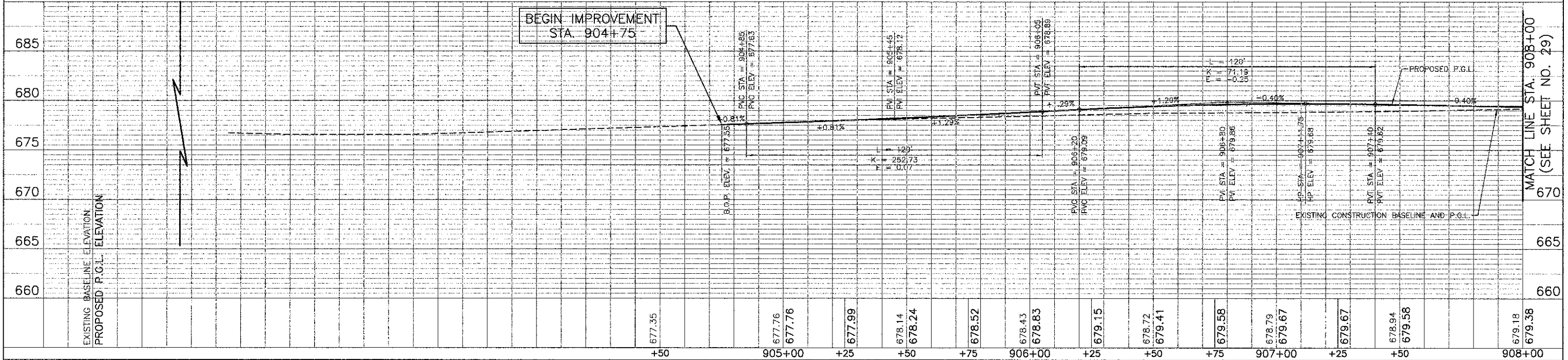
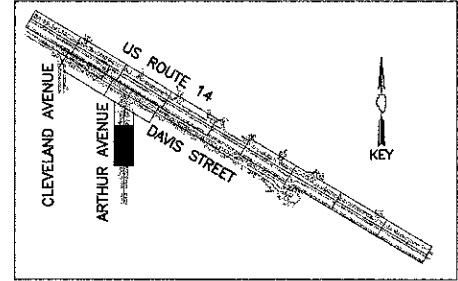
DATE	
BY	
SURVEYED	
PLOTTED	
CHECKED	
NO. OF WAY CHECKED	
CADD FILE NAME	
PLAN	
NOTE BOOK NO.	

DATE	
BY	
SURVEYED	
PLOTTED	
CHECKED	
NO. OF STRUCTURE NOTATIONS CHECKED	
PROFILE	
NOTE BOOK NO.	



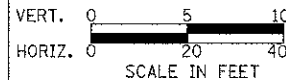
NOTES:  
 1. CURB AND GUTTER TRANSITION FROM TYPE B-6.18 TO EXISTING TYPE WILL BE PAID FOR AS "COMBINATION CONCRETE CURB AND GUTTER TYPE B-6.18."

\*CE - HMA DRIVEWAYS TO MATCH EXISTING  
 REFERENCE BD-01 AND BD-02 DISTRICT ONE DETAILS.  
 INCLUDES AGGREGATE BASE CSE., TYPE B, 3"



USER NAME = #USER#	DESIGNED - RTM	REVISED - 11/07/12
PLLOT SCALE = #SCALE#	DRAWN - JRR	REVISED -
PLLOT DATE = #DATE#	CHECKED - RTM	REVISED -
	DATE - 10/22/12	REVISED -

STATE OF ILLINOIS  
 DEPARTMENT OF TRANSPORTATION



PLAN AND PROFILE - ARTHUR AVENUE

F.A.U. RTE.	SECTION	COUNTY	TOTAL SHEETS	SHEET NO.
3512	02-001177-00 WR	COOK	142	28
PROJECT NO. M-8003(426)		CONTRACT NO. 63514		
FED. ROAD DIST. NO. 1 ILLINOIS FED. AID PROJECT				

SHEET NO. 11 OF 12 SHEETS STA. 904+75 TO STA. 908+00