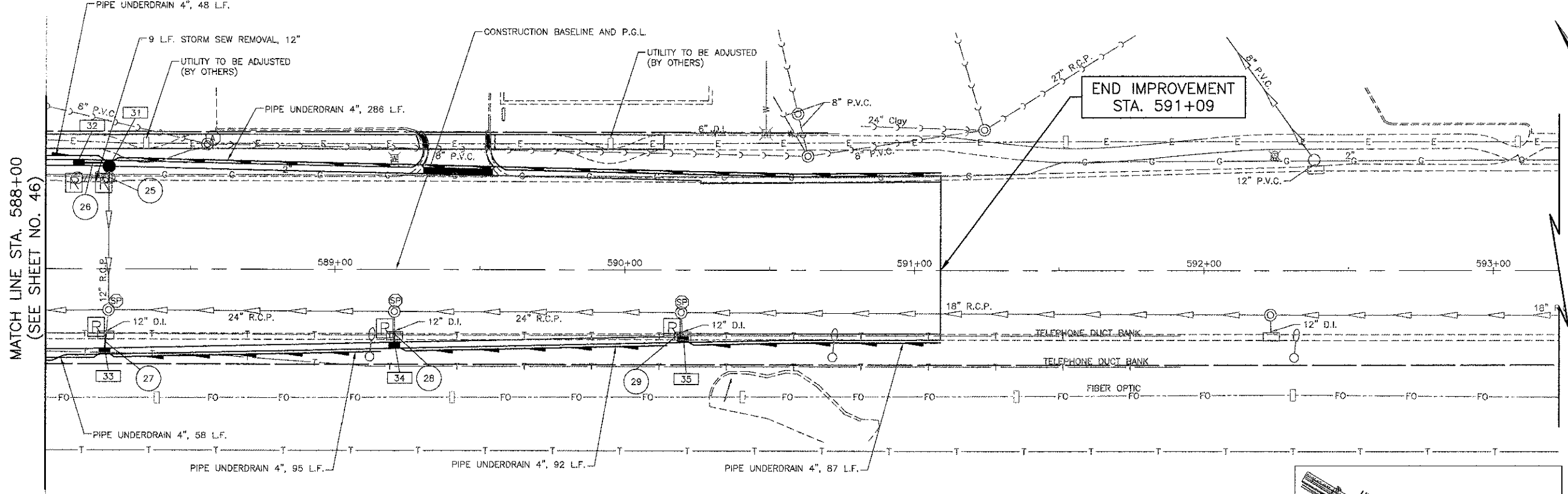


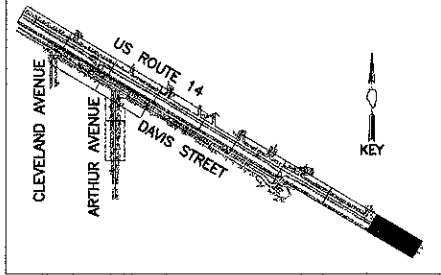
31 STA. 588+21.0, 35.3' LT. CB TA 4 DIA T23F&G RIM EL. = 674.84 INV. EL. = 671.00 (S) INV. EL. = 671.1 (W)	32 STA. 588+11.0, 35.5' LT. INLET TA T23F&G RIM EL. = 674.84 INV. EL. = 671.20	33 STA. 588+21.0, 27.3' RT. INLET TA T23F&G RIM EL. = 675.04 INV. EL. = 672.40	34 STA. 589+20.5, 25.0' RT. INLET TA T23F&G RIM EL. = 675.37 INV. EL. = 672.60	35 STA. 590+20.0, 22.0' RT. INLET TA T23F&G RIM EL. = 675.88 INV. EL. = 673.20
--	---	---	---	---



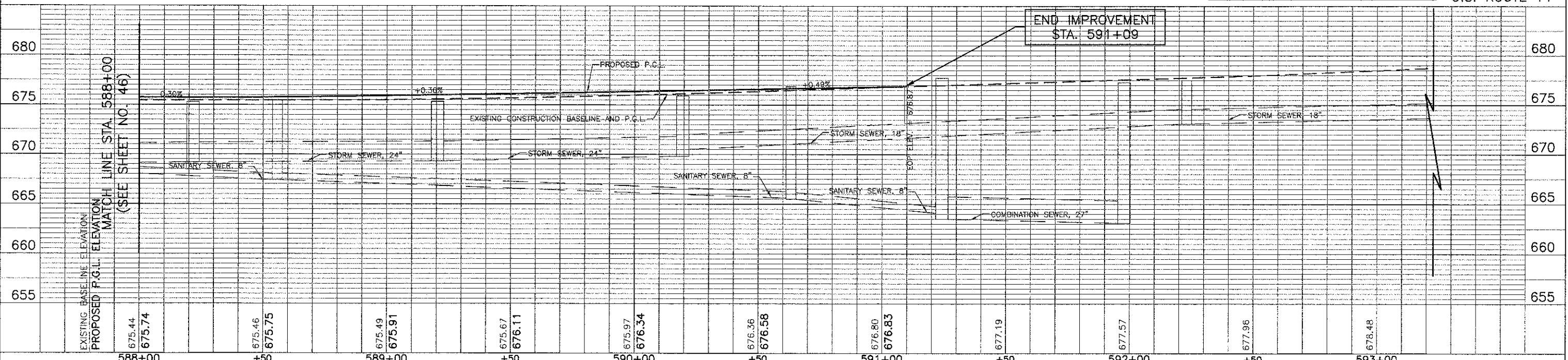
MATCH LINE STA. 588+00
(SEE SHEET NO. 46)

END IMPROVEMENT
STA. 591+09

- 25 4' - STORM SEW WM REQ, 12" @ 1.00%
T.B.F. = 2 CU. YD.
- 26 5' - STORM SEW WM REQ, 12" @ 2.00%
T.B.F. = 2 CU. YD.
- 27 5' - DI STORM SEWER, 12" @ 2.00%
T.B.F. = 2 CU. YD.
- 28 4' - DI STORM SEWER, 12" @ 2.00%
T.B.F. = 2 CU. YD.
- 29 2' - DI STORM SEWER, 12" @ 2.00%
T.B.F. = 2 CU. YD.



U.S. ROUTE 14



END IMPROVEMENT
STA. 591+09

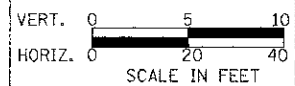
DATE	
BY	
REVISION	
NO.	
DATE	
BY	
REVISION	
NO.	
DATE	
BY	
REVISION	
NO.	

DATE	
BY	
REVISION	
NO.	
DATE	
BY	
REVISION	
NO.	
DATE	
BY	
REVISION	
NO.	



USER NAME = #USER#	DESIGNED - RTM	REVISED -
PLOT SCALE = #SCALE#	DRAWN - JRR	REVISED -
PLOT DATE = #DATE#	CHECKED - RTM	REVISED -
	DATE - 10/22/12	REVISED -

STATE OF ILLINOIS
DEPARTMENT OF TRANSPORTATION



DRAINAGE AND UTILITIES - U.S. ROUTE 14 EAST

SHEET NO. 8 OF 12 SHEETS | STA. 588+00 TO STA. 591+09

F.A.U. RTE. 3512	SECTION 02-00177-00 WR	COUNTY COOK	TOTAL SHEETS 142	SHEET NO. 47
PROJECT NO. M-8003(426)		CONTRACT NO. 63514		
FED. ROAD DIST. NO. 1 ILLINOIS FED. AID PROJECT				