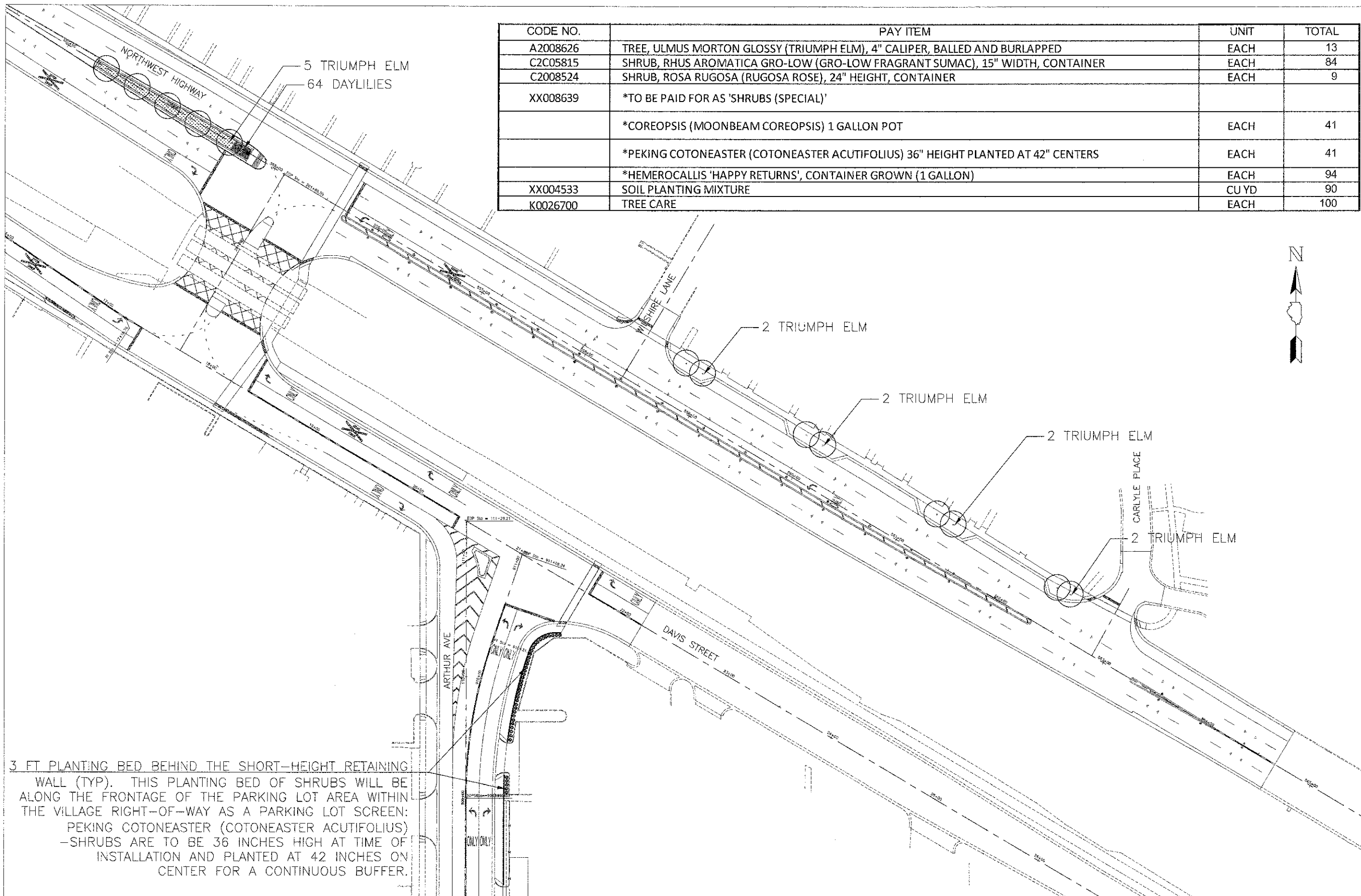
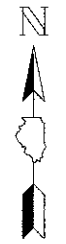


PLAN	SURVEYED	BY	DATE
	PLOTTED		
	NOTED		
	REVISIONS		
	FILED		
	CHECKED		
	NO.		

PROFILE	SURVEYED	BY	DATE
	PLOTTED		
	NOTED		
	REVISIONS		
	FILED		
	CHECKED		
	NO.		



CODE NO.	PAY ITEM	UNIT	TOTAL
A2008626	TREE, ULMUS MORTON GLOSSY (TRIUMPH ELM), 4" CALIPER, BALLED AND BURLAPPED	EACH	13
C2C05815	SHRUB, RHUS AROMATICA GRO-LOW (GRO-LOW FRAGRANT SUMAC), 15" WIDTH, CONTAINER	EACH	84
C2008524	SHRUB, ROSA RUGOSA (RUGOSA ROSE), 24" HEIGHT, CONTAINER	EACH	9
XX008639	*TO BE PAID FOR AS 'SHRUBS (SPECIAL)'		
	*COREOPSIS (MOONBEAM COREOPSIS) 1 GALLON POT	EACH	41
	*PEKING COTONEASTER (COTONEASTER ACUTIFOLIUS) 36" HEIGHT PLANTED AT 42" CENTERS	EACH	41
	*HEMEROCALLIS 'HAPPY RETURNS', CONTAINER GROWN (1 GALLON)	EACH	94
XX004533	SOIL PLANTING MIXTURE	CU YD	90
K0026700	TREE CARE	EACH	100



3 FT PLANTING BED BEHIND THE SHORT-HEIGHT RETAINING WALL (TYP). THIS PLANTING BED OF SHRUBS WILL BE ALONG THE FRONTAGE OF THE PARKING LOT AREA WITHIN THE VILLAGE RIGHT-OF-WAY AS A PARKING LOT SCREEN: PEKING COTONEASTER (COTONEASTER ACUTIFOLIUS) -SHRUBS ARE TO BE 36 INCHES HIGH AT TIME OF INSTALLATION AND PLANTED AT 42 INCHES ON CENTER FOR A CONTINUOUS BUFFER.

1 NORTHWEST HIGHWAY & ARTHUR PLANTING PLAN

SCALE: 1"=20'-0"

Village of Arlington Heights
 33 S. Arlington Heights Road
 Arlington Heights IL 60005
PLANTING PLAN

Date: 10/24/2006

Revisions:

Scale:

Checked By:

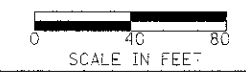
Project Number:

Drawn By: DMM

Sheet Number: L.1

USER NAME = #USER#	DESIGNED -	REVISED -
PLOT SCALE = #SCALE#	DRAWN -	REVISED -
PLOT DATE = #DATE#	CHECKED -	REVISED -
	DATE - 10/22/12	REVISED -

STATE OF ILLINOIS
 DEPARTMENT OF TRANSPORTATION



LANDSCAPE PLANTING PLAN

SHEET NO. 1 OF 6 SHEETS

F.A.J. R.T.E.	SECTION	COUNTY	TOTAL SHEETS	SHEET NO.
35:2	02-00177-00 WR	COCK	142	63
PROJECT NO. M-8003(426)			CONTRACT NO. 63514	
FED. ROAD DIST. NO. 1 ILLINOIS FED. AID PROJECT				