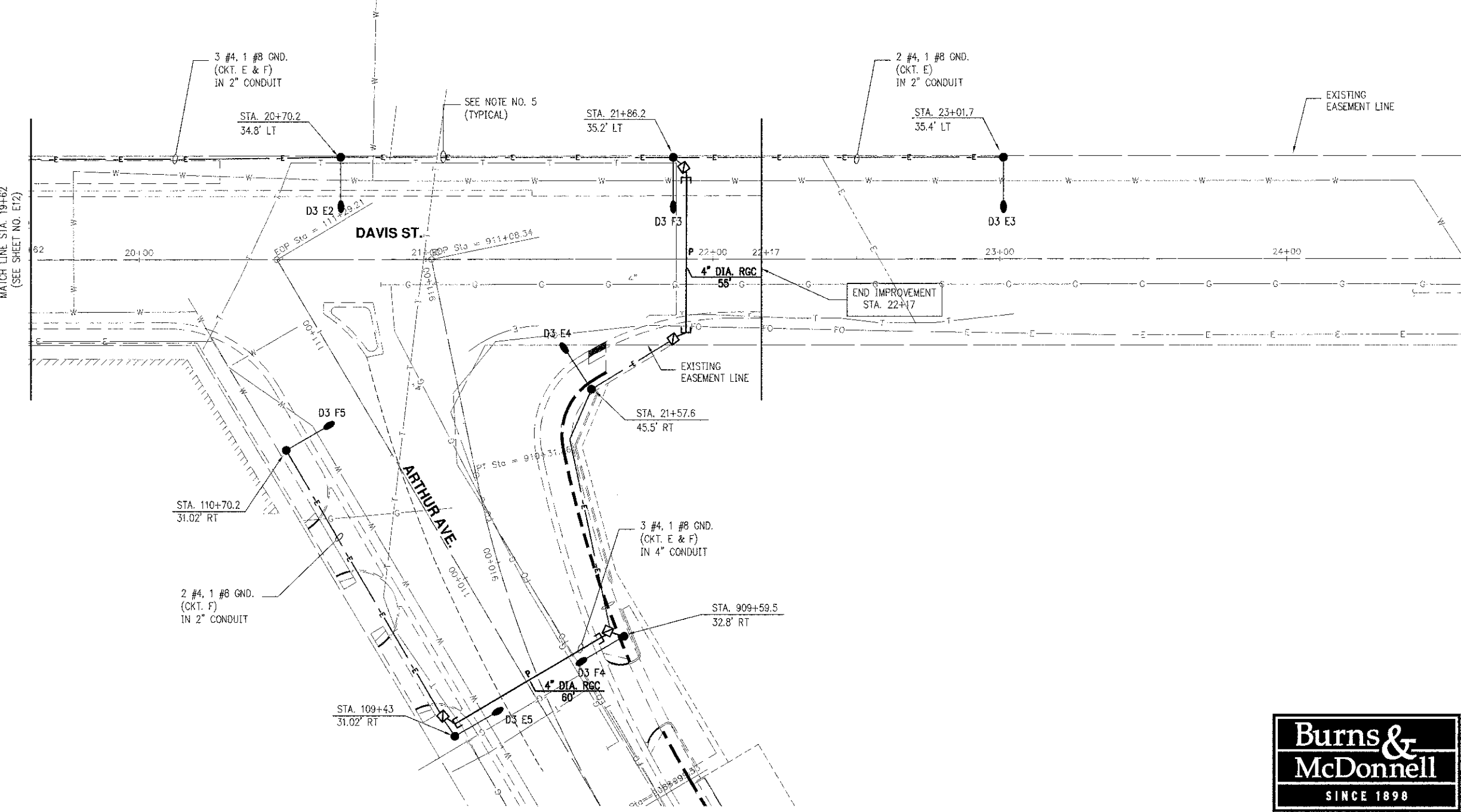
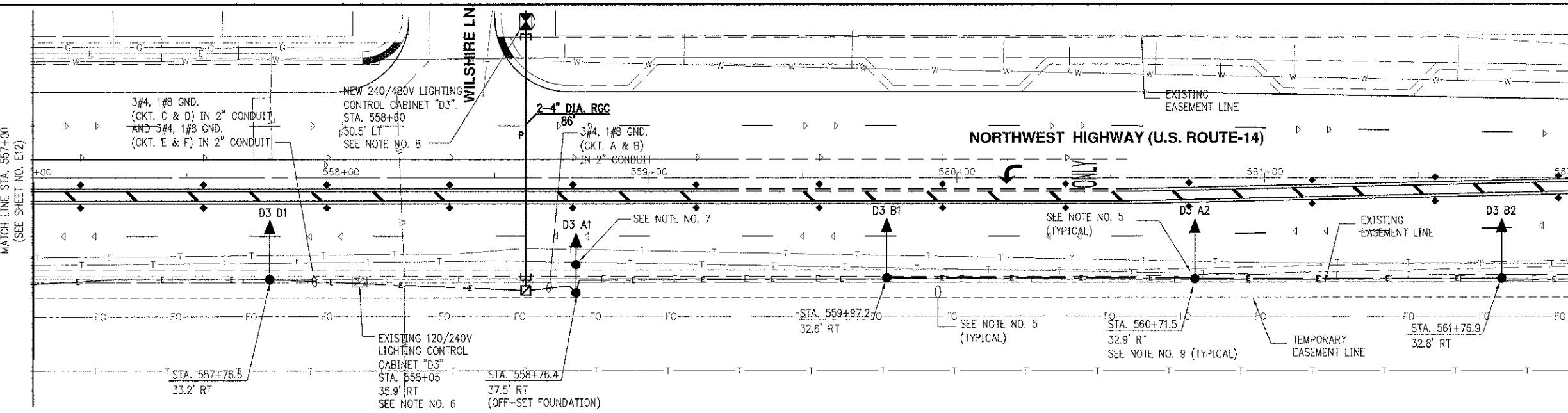


FAU. RTE.	SECTION	COUNTY	TOTAL SHEETS	SHEET NO.
3512102-00177-00-WR		COOK	142	97
557+00			562+00	
FED. ROAD DISTRICT		ILLINOIS	FED. AID PROJECT	
CONTRACT NUMBER 83514				



- NOTES:
- REFER TO DRAWING E1 FOR GENERAL NOTES, LEGEND AND ABBREVIATIONS.
  - REFER TO DRAWINGS E15 THRU E20 FOR DETAILS.
  - REFER TO DRAWING E21 FOR LIGHT POLE SCHEDULE AND DRAWING E22 FOR LIGHTING SINGLE LINE DIAGRAM.
  - LOCATION OF EXISTING CONDUIT AND CABLE IS APPROXIMATE. FIELD VERIFY REQUIRED FOR EXACT LOCATION OF CONDUIT ROUTING.
  - PROPOSED LOCATIONS OF LIGHT POLES SHALL BE FIELD VERIFIED WITH THE OWNER AND ENGINEER PRIOR TO CONSTRUCTION.
  - EXISTING LIGHTING CONTROLLER TO REMAIN IN USE FOR THE DURATION OF NEW WORK AND SHALL BE REMOVED AFTER PROPOSED LIGHTING SYSTEM IS ENERGIZED AND ACCEPTED BY THE VILLAGE OF ARLINGTON HEIGHTS.
  - OFFSET FOUNDATION REQUIRED PER PROPOSED UNDERGROUND STORM LINE. COORDINATE EXACT REQUIREMENTS WITH VILLAGE.
  - REFER TO DETAIL NO. 4 ON DRAWING E15 FOR PROPOSED LIGHTING CONTROL CABINET ELECTRICAL SERVICE. SEE STANDARD ON DRAWING E23 FOR PROPOSED LIGHTING CONTROL CABINET. EXACT LOCATION AND ORIENTATION SHALL BE COORDINATED WITH AND APPROVED BY THE VILLAGE OF ARLINGTON HEIGHTS.
  - POLE SETBACK IS MEASURED FROM ROADWAY CENTERLINE TO CENTER OF POLE.



REVISIONS	
NAME	DATE

E13 OF E24

VILLAGE OF ARLINGTON HEIGHTS  
**PROPOSED LIGHTING PLAN-3**  
 U.S. ROUTE 14  
 STA. 557+00 TO STA. 562+00

20 SCALE IN FEET

HORIZ. DATE: 08/17/2012  
 DESIGNED BY: EE  
 TECHNICIAN: EE  
 CHECKED BY: DEM