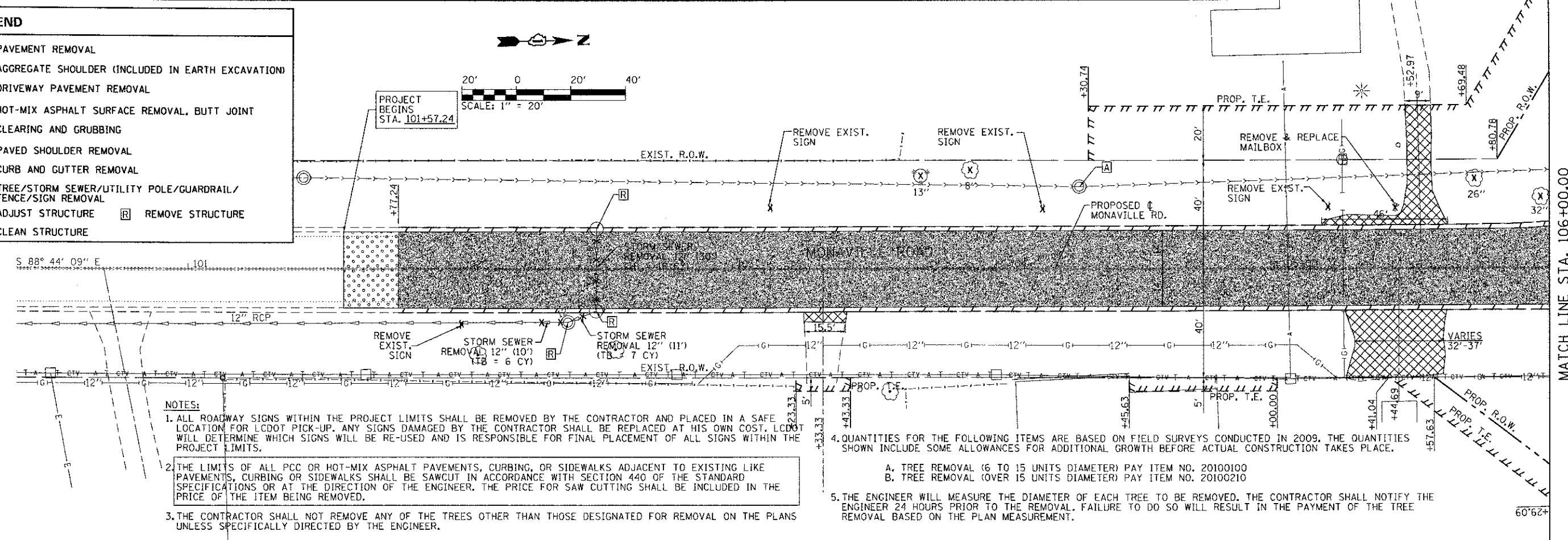
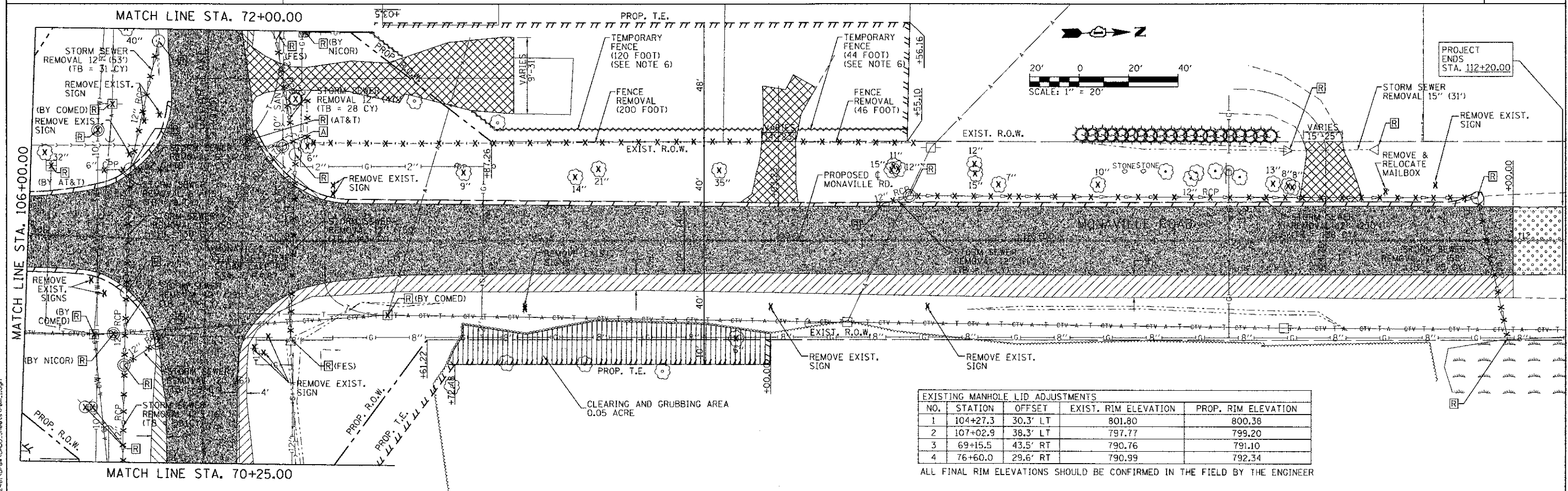


LEGEND

- PAVEMENT REMOVAL
- AGGREGATE SHOULDER (INCLUDED IN EARTH EXCAVATION)
- DRIVEWAY PAVEMENT REMOVAL
- HOT-MIX ASPHALT SURFACE REMOVAL, BUTT JOINT
- CLEARING AND GRUBBING
- PAVED SHOULDER REMOVAL
- CURB AND CUTTER REMOVAL
- TREE/STORM SEWER/UTILITY POLE/GUARDRAIL/FENCE/SIGN REMOVAL
- ADJUST STRUCTURE
- REMOVE STRUCTURE
- CLEAN STRUCTURE



- NOTES:**
- ALL ROADWAY SIGNS WITHIN THE PROJECT LIMITS SHALL BE REMOVED BY THE CONTRACTOR AND PLACED IN A SAFE LOCATION FOR LCDOT PICK-UP. ANY SIGNS DAMAGED BY THE CONTRACTOR SHALL BE REPLACED AT HIS OWN COST. LCDOT WILL DETERMINE WHICH SIGNS WILL BE RE-USED AND IS RESPONSIBLE FOR FINAL PLACEMENT OF ALL SIGNS WITHIN THE PROJECT LIMITS.
 - THE LIMITS OF ALL PCC OR HOT-MIX ASPHALT PAVEMENTS, CURBING, OR SIDEWALKS ADJACENT TO EXISTING LIKE PAVEMENTS, CURBING OR SIDEWALKS SHALL BE SAWCUT IN ACCORDANCE WITH SECTION 440 OF THE STANDARD SPECIFICATIONS OR AT THE DIRECTION OF THE ENGINEER. THE PRICE FOR SAW CUTTING SHALL BE INCLUDED IN THE PRICE OF THE ITEM BEING REMOVED.
 - THE CONTRACTOR SHALL NOT REMOVE ANY OF THE TREES OTHER THAN THOSE DESIGNATED FOR REMOVAL ON THE PLANS UNLESS SPECIFICALLY DIRECTED BY THE ENGINEER.
 - QUANTITIES FOR THE FOLLOWING ITEMS ARE BASED ON FIELD SURVEYS CONDUCTED IN 2009, THE QUANTITIES SHOWN INCLUDE SOME ALLOWANCES FOR ADDITIONAL GROWTH BEFORE ACTUAL CONSTRUCTION TAKES PLACE.
 - A. TREE REMOVAL (6 TO 15 UNITS DIAMETER) PAY ITEM NO. 20100100
 - B. TREE REMOVAL (OVER 15 UNITS DIAMETER) PAY ITEM NO. 20100210
 - THE ENGINEER WILL MEASURE THE DIAMETER OF EACH TREE TO BE REMOVED. THE CONTRACTOR SHALL NOTIFY THE ENGINEER 24 HOURS PRIOR TO THE REMOVAL. FAILURE TO DO SO WILL RESULT IN THE PAYMENT OF THE TREE REMOVAL BASED ON THE PLAN MEASUREMENT.



| EXISTING MANHOLE LID ADJUSTMENTS | | | | |
|----------------------------------|----------|----------|----------------------|---------------------|
| NO. | STATION | OFFSET | EXIST. RIM ELEVATION | PROP. RIM ELEVATION |
| 1 | 104+27.3 | 30.3' LT | 801.80 | 800.38 |
| 2 | 107+02.9 | 38.3' LT | 797.77 | 799.20 |
| 3 | 69+15.5 | 43.5' RT | 790.76 | 791.10 |
| 4 | 76+60.0 | 29.6' RT | 790.99 | 792.34 |

ALL FINAL RIM ELEVATIONS SHOULD BE CONFIRMED IN THE FIELD BY THE ENGINEER

FILE NAME = L:\LAME\DO1122481\Draw\LPDD_Sheets\rem1.dgn



| | | |
|----------------------------|----------------|-----------|
| USER NAME = Jeff Sedig | DESIGNED - MNB | REVISED - |
| PLOT SCALE = 40,0000 / in. | DRAWN - ERD | REVISED - |
| PLOT DATE = #PLOTDATE# | CHECKED - CMC | REVISED - |
| | DATE - | REVISED - |

**STATE OF ILLINOIS
DEPARTMENT OF TRANSPORTATION**

| | | | | | |
|--|-------------------------|---------------------|------------------------|---------------------------|-----------------|
| REMOVAL PLAN MONAVILLE ROAD | | F.A.U. RTE. 0192 | SECTION 06-00153-07-CH | COUNTY LAKE | TOTAL SHEETS 17 |
| SCALE: 1"=20' | SHEET NO. 1 OF 2 SHEETS | STA. | TO STA. | CONTRACT NO. 63682 | |
| | | FED. ROAD DIST. NO. | | ILLINOIS FED. AID PROJECT | |