

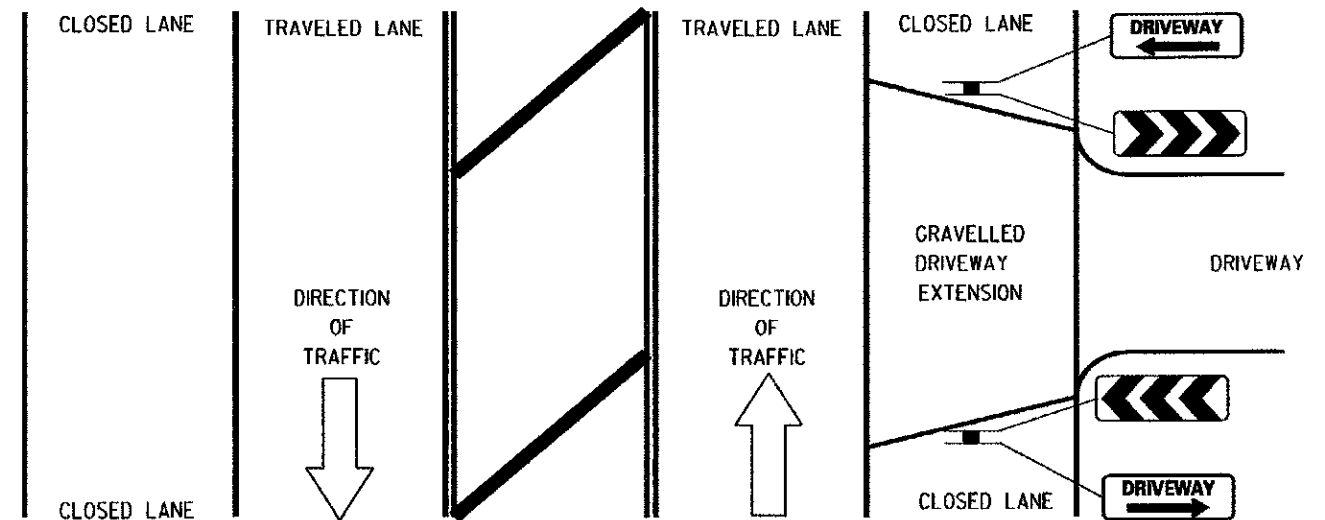


30" X 12" WHITE ON GREEN REFLECTIVE BACKGROUND, 1/2" BORDER, LETTER SIZE 4C



30" X 12" BLACK ON FLOURESCENT ORANGE CHEVRONS


EXAMPLE OF DRIVEWAY SIGN ASSEMBLY INSTALLATION



TEMPORARY CONSTRUCTION INFORMATION SIGNING NOTES:

1. The driveway and chevron signs shall be mounted back to back on the near side of the roadway where the entrance is located. There will be two sign assemblies per driveway.
2. Temporary construction information signs shall be post mounted 7' above the near edge of pavement and shall be a minimum of 6' beyond the edge of the nearest traveled lane, or as directed by the Engineer.
3. The retroreflective sign face shall be a minimum of Type "A" material.
4. The temporary construction information signs shall be removed or relocated when the Engineer determines the signs to be no longer necessary.
5. Existing traffic control signs and messages that are in conflict with the proposed maintenance of traffic shall be covered or modified with a temporary overlay as shown in the plans and/or as directed by the Engineer.
6. Install additional temporary sign panel assemblies as shown in the plans and/or directed by the Engineer.

REVISIONS	DATE
Revised Signs & Text	1/1/09


Lake County
 Division of Transportation

APPROVED BY: A KHAWAJA
DATE: APRIL 1, 2007

TEMPORARY CONSTRUCTION INFORMATION SIGNS
 SHEET 1 OF 2

LC7201

FILE NAME = L:\AR\ECN\12248\12248.DWG - 12/22/2012 - 10:40:00 AM - 10/22/2012 - 10:40:00 AM - 10/22/2012 - 10:40:00 AM