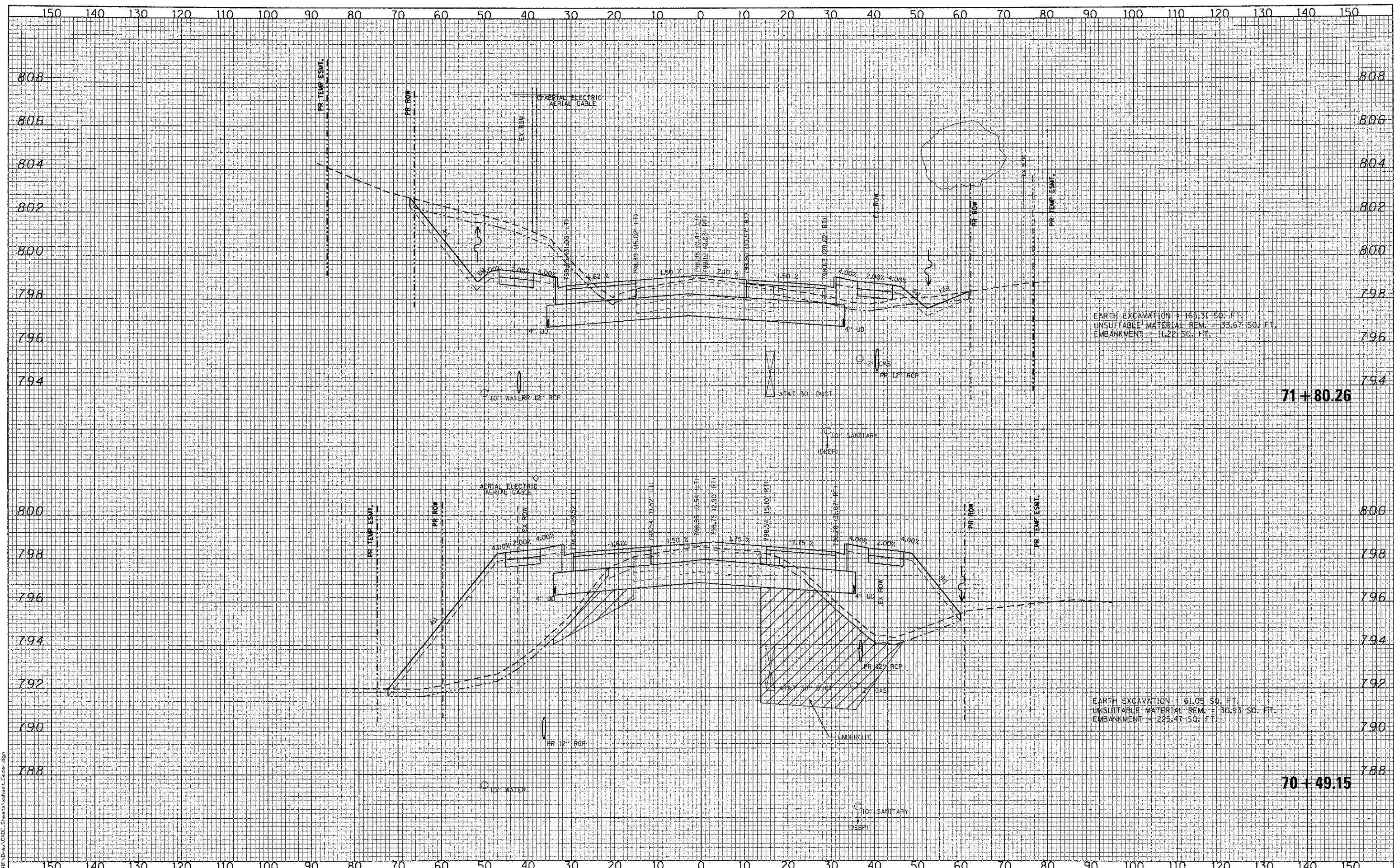


FINAL SURVEY	DATE
PLOTTED	
TEMPLATE	
AREAS CHECKED	
NO.	

ORIGINAL SURVEY	DATE
PLOTTED	
TEMPLATE	
AREAS CHECKED	
NO.	

FILE NAME = L:\PROJECTS\1122401\Drawings\1122401_Sheets\Sheet 03682.dgn



EARTH EXCAVATION = 165.31 SQ. FT.
 UNSUITABLE MATERIAL REM. = 33.67 SQ. FT.
 EMBANKMENT = 11.22 SQ. FT.

EARTH EXCAVATION = 61.05 SQ. FT.
 UNSUITABLE MATERIAL REM. = 30.95 SQ. FT.
 EMBANKMENT = 125.47 SQ. FT.



USER NAME = Jeff Sedig	DESIGNED - CMC	REVISED -
PLOT SCALE = 20.0000' / in.	DRAWN - ERD	REVISED -
PLOT DATE = \$PLOTDATE\$	CHECKED - KON	REVISED -
	DATE - 10/22/2012	REVISED -

**STATE OF ILLINOIS
 DEPARTMENT OF TRANSPORTATION**

CEDAR LAKE ROAD - CROSS SECTIONS

SCALE: 10H:8V SHEET NO. OF SHEETS STA. 70+49.15 TO STA. 71+80.26

F.A. RTE.	SECTION	COUNTY	TOTAL SHEETS	SHEET NO.
0192	06-00153-07-CH	LAKE	120	94
FED. ROAD DIST. NO. 1 ILLINOIS FED. AID PROJECT				CONTRACT NO. 63682