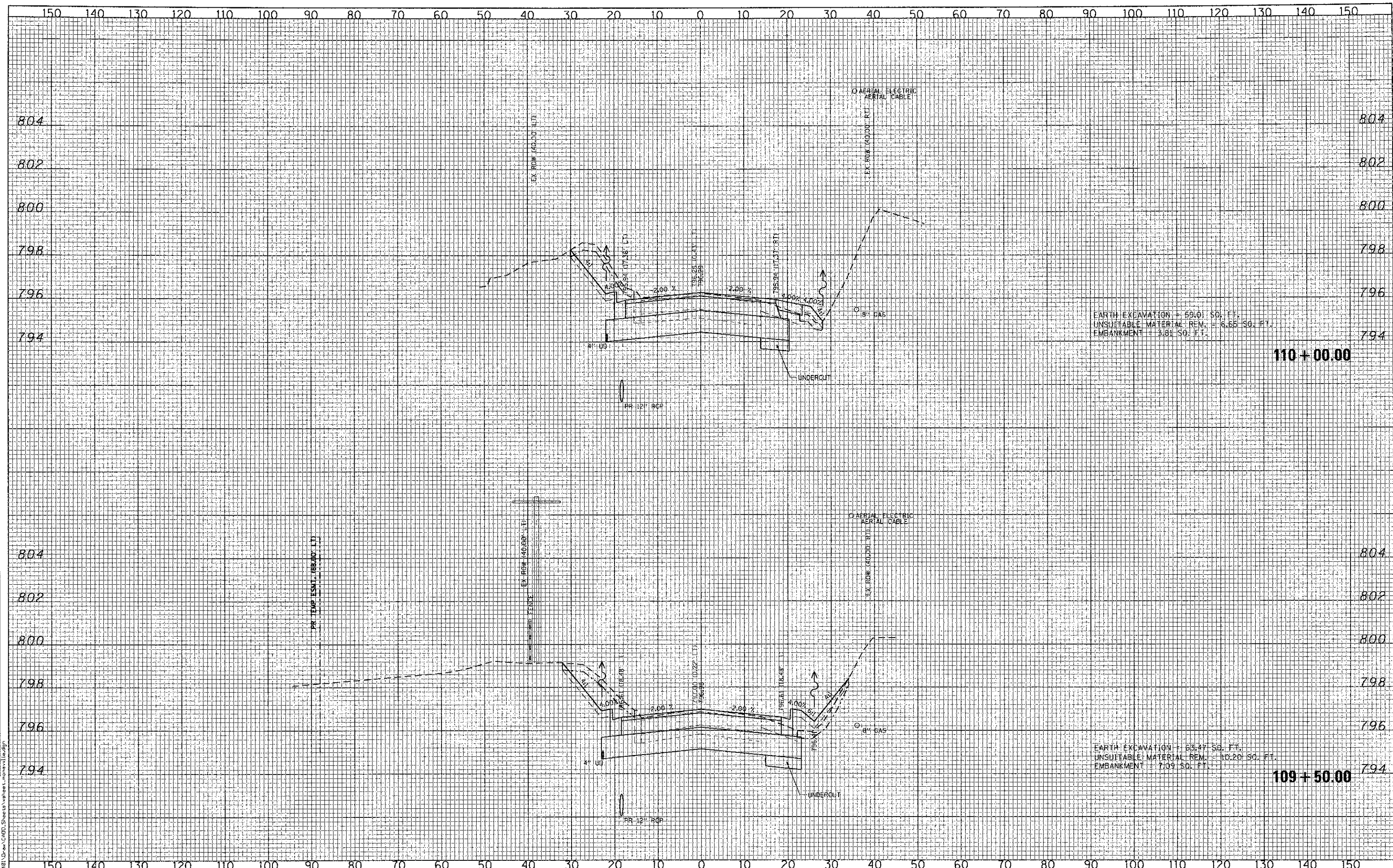


DATE	
BY	
ORIGINAL SURVEY	
NOTED SURVEY	
NOTE BOOK	
AREAS CHECKED	

DATE	
BY	
ORIGINAL SURVEY	
NOTED SURVEY	
NOTE BOOK	
AREAS CHECKED	



EARTH EXCAVATION = 59.01 SQ. FT.
 UNSUITABLE MATERIAL REM. = 6.65 SQ. FT.
 EMBANKMENT = 3.81 SQ. FT.

EARTH EXCAVATION = 63.47 SQ. FT.
 UNSUITABLE MATERIAL REM. = 10.20 SQ. FT.
 EMBANKMENT = 7.09 SQ. FT.

 CMT CRAWFORD, MURPHY & TILLY, INC. CONSULTING ENGINEERS License No. 184-000613	USER NAME = Jeff Sadig DESIGNED - CMC DRAWN - ERO CHECKED - KON DATE - 10/22/2012	REVISED - REVISED - REVISED - REVISED -	STATE OF ILLINOIS DEPARTMENT OF TRANSPORTATION	MONAVILLE ROAD - CROSS SECTIONS	F.A. RTE. 0192 SECTION 06-00153-07-CH COUNTY LAKE TOTAL SHEETS 120 SHEET NO. 117 CONTRACT NO. 63682
	PLOT SCALE = 20,000 / 1" = 100' PLOT DATE = #PLOTDATE#	SCALE: 10H:2V SHEET NO. OF SHEETS STA. 109+50.00 TO STA. 110+00.00			FED. ROAD DIST. NO. 1 (ILLINOIS) FED. AID PROJECT