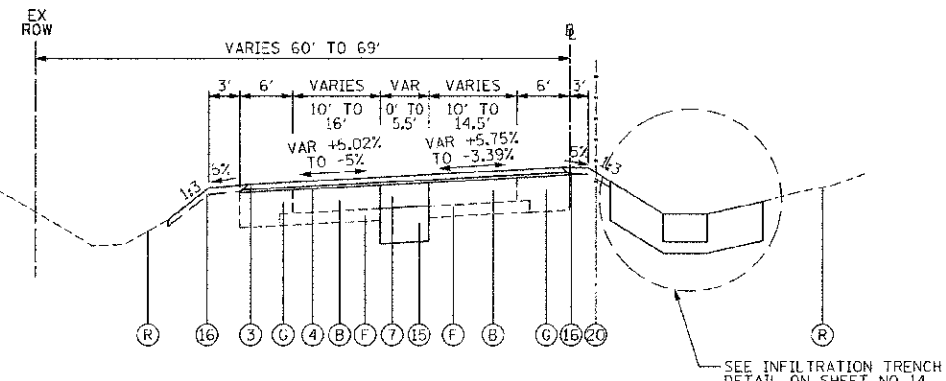
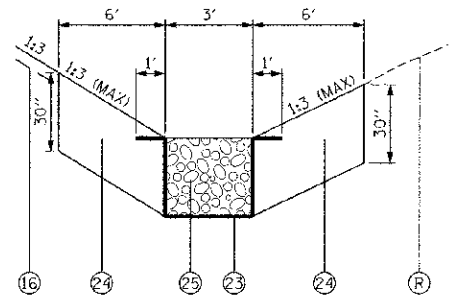


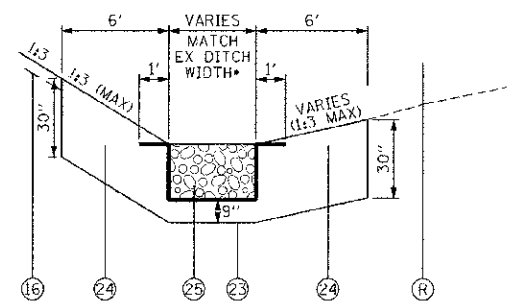
DATE	
BY	
CHECKED	
DESIGNED	
PLANNED	
APPROVED	
DATE	
BY	
CHECKED	
DESIGNED	
PLANNED	
APPROVED	



PROPOSED TYPICAL SECTION  
COMMONWEALTH LANE  
STATION 307+86.25 TO 309+67.95



PROPOSED INFILTRATION TRENCH DETAIL  
COMMONWEALTH LANE  
STATION 301+25 TO 302+50  
STATION 303+25 TO 305+00



PROPOSED INFILTRATION TRENCH DETAIL  
COMMONWEALTH LANE  
STATION 306+50 TO 309+00  
EXCEPT AS NOTED ON DRAINAGE PLANS  
(SEE SHEET NO. 29)

PROPOSED LEGEND

- ① HOT-MIX ASPHALT SURFACE COURSE, MIX "D", N70 - 1 1/2"
- ② LEVELING BINDER (MACHINE METHOD), N70 - 1"
- ③ HOT-MIX ASPHALT SURFACE COURSE, MIX "C", N50 - 1 1/2"
- ④ LEVELING BINDER (MACHINE METHOD), N50 VARIES 1" TO 2 1/4" \*
- ⑤ HOT-MIX ASPHALT BINDER COURSE, IL-19.0, N50 2 1/4" AND VARIES \*
- ⑥ PORTLAND CEMENT CONCRETE BASE COURSE 10"
- ⑦ PORTLAND CEMENT CONCRETE BASE COURSE 7"
- ⑧ LONGITUDINAL CONSTRUCTION JOINT NO. 6 X 2' LONG DEFORMED TIE BARS GROUTED-IN-PLACE (EPOXY COATED) AT 2' C-C (STANDARD 420001-07) (INCLUDED IN THE COST OF PCC PAVEMENT)
- ⑨ LONGITUDINAL CONSTRUCTION JOINT NO. 6 X 2' LONG DEFORMED TIE BARS GROUTED-IN-PLACE (EPOXY COATED) AT 2' C-C (STANDARD 420001-07) (INCLUDED IN THE COST OF COMBINATION CURB & GUTTER OR CONC MEDIAN)
- ⑩ HOT-MIX ASPHALT SHOULDERS, 6 1/2"
- ⑪ HOT-MIX ASPHALT SHOULDERS, 4 1/2"
- ⑫ COMBINATION CONCRETE CURB & GUTTER, TY B-6.12
- ⑬ CONCRETE MEDIAN, TY SB-6.12
- ⑭ STRIP REFLECTIVE CRACK CONTROL TREATMENT
- ⑮ AGGREGATE SUBGRADE IMPROVEMENT, 12"
- ⑯ TOPSOIL FURNISH AND PLACE 4" AND SEEDING AS NOTED ON PLANS
- ⑰ PIPE UNDERDRAINS 4"
- ⑱ STEEL PLATE BEAM GUARDRAIL, TYPE A, 6 FT POSTS
- ⑲ STEEL PLATE BEAM GUARDRAIL, TYPE B, 9 FT POSTS
- ⑳ CHAIN LINK FENCE, 4'
- ㉑ CHAIN LINK FENCE, 6'
- ㉒ AGGREGATE SHOULDER, TYPE B 8"
- ㉓ FILTER FABRIC
- ㉔ TOPSOIL FURNISH AND PLACE, SPECIAL
- ㉕ POROUS GRANULAR BACKFILL, SPECIAL

\*FOR DEPTHS OF LEVELING BINDER AND HMA BINDER COURSE, SEE SHEET NO. 38

NOTE: BOXED ITEMS ARE INCLUDED IN THE COST AS DESIGNATED

EXISTING LEGEND

- Ⓐ CONTINUOUSLY REINFORCED CEMENT CONCRETE PAVEMENT (7")
- Ⓑ PORTLAND CEMENT CONCRETE PAVEMENT (8")
- Ⓒ HOT-MIX ASPHALT BINDER COURSE (10" AND VARIES)
- Ⓓ HOT-MIX ASPHALT LEVELING BINDER COURSE (3/4" AND VARIES)
- Ⓔ HOT-MIX ASPHALT SURFACE COURSE (1 3/4" AND VARIES)
- Ⓕ STABILIZED SUB-BASE (BITUMINOUS AGGREGATE MIXTURE) 4"
- Ⓖ STABILIZED SHOULDER (BITUMINOUS AGGREGATE MIXTURE) (11 1/4" AND VARIES)
- Ⓗ COMBINATION CONCRETE CURB & GUTTER, TY B-6.12
- Ⓘ COMBINATION CONCRETE CURB & GUTTER, TY B-9.06
- Ⓝ AGGREGATE SHOULDER, TY B
- Ⓚ PORTLAND CEMENT CONCRETE MEDIAN, TY C-4 MODIFIED
- Ⓛ PORTLAND CEMENT CONCRETE MEDIAN SURFACE, 4"
- Ⓜ PORTLAND CEMENT CONCRETE SIDEWALK, 5"
- Ⓝ HOT-MIX ASPHALT BIKE PATH
- Ⓞ CHAIN LINK FENCE
- Ⓟ STEEL PLATE BEAM GUARDRAIL
- Ⓠ RETAINING WALL
- Ⓡ GROUND SURFACE (ASSUME EXISTING 7" TOPSOIL DEPTH)
- Ⓢ HOT-MIX ASPHALT SURFACE REMOVAL, 2 1/2"
- Ⓣ PORTLAND CEMENT CONCRETE SURFACE REMOVAL 1"
- Ⓤ HANDRAIL
- Ⓡ AGGREGATE SHOULDER

AGGREGATE SUBGRADE IMPROVEMENT AND GEOTECHNICAL FABRIC FOR GROUND STABILIZATION

AGGREGATE SUBGRADE IMPROVEMENT (ASI), HAS BEEN PROVIDED FOR USE AT THE LOCATIONS INDICATED FOR SOILS THAT TEND TO BE UNSUITABLE OR UNSTABLE. GEOTECHNICAL FABRIC FOR GROUND STABILIZATION IS TO BE PLACED BELOW THE ASI. THOUGH THE ACTUAL NEED FOR REMOVAL AND REPLACEMENT WITH ASI WILL BE DETERMINED IN THE FIELD AT THE TIME OF CONSTRUCTION BY THE GEOTECHNICAL ENGINEER. ALL POTENTIALLY UNSTABLE SOILS SHOULD BE TESTED WITH EITHER A STATIC OR DYNAMIC CONE PENETROMETER AND TREATED IN ACCORDANCE WITH ARTICLE 301.04 AND THE UNDERCUT GUIDELINES IN THE IDOT SUBGRADE STABILITY MANUAL. IF UNSTABLE AND/OR UNSUITABLE MATERIAL IS ENCOUNTERED, THE SOIL SHALL BE REMOVED AND REPLACED WITH PCES AS DETERMINED BY THE GEOTECHNICAL ENGINEER. IF UNSTABLE AND/OR UNSUITABLE MATERIAL IS NOT ENCOUNTERED, THEN THE QUANTITY SHALL BE DEDUCTED AND NO ADDITIONAL COMPENSATION WILL BE DUE TO THE CONTRACTOR.

STATION RANGE	LOCATION	LENGTH	AVE WIDTH	DEPTH	VOLUME
BUTTERFIELD ROAD					
103+00 TO 105+50	WIDENING	250'	5.0'	1'	46 CU YD
COMMONWEALTH LANE					
300+50 TO 301+50	WIDENING	100'	10.0'	1'	37 CU YD

SCHEDULE OF EARTHWORK

FROM	TO	20201200 REM & DISP UNS MATL CU YD			66900200 NON SPL WASTE DISPOS CU YD			20200100 EARTH EXCAVATION CU YD			EARTH EXCAVATION AVAILABLE FOR USE AS FURNISHED EXCAVATION CU YD			EXCAVATION TO BE USED IN EMBANKMENT (ADJ FOR 15% SHRINKAGE) CU YD			EMBANKMENT CU YD			EARTHWORK BALANCE EXCESS (+) OR SHORTAGE (-) CU YD			20400800 FURNISHED EXCAVATION CU YD	
		UNDERCUT	STAGE 1	STAGE 2	STAGE 3	STAGE 1	STAGE 2	STAGE 3	STAGE 1	STAGE 2	STAGE 3	STAGE 1	STAGE 2	STAGE 3	STAGE 1	STAGE 2	STAGE 3	STAGE 1	STAGE 2	STAGE 3				
BUTTERFIELD ROAD																								
					505					145			634			496			421		1,080		-859	
COMMONWEALTH LANE																								
		41			402	247	230	238	159	165	956	11	159	899	9	135	765	123		335	-114	135	430	
		83																						
		83	41		907	247	230	383	159	165	1,590	11	159	1,395	9	135	1,186	123		1,415	-114	135	-230	
					1,030			860			1,914			1,565			1,330			1,538			209	



USER NAME = ksondell	DESIGNED -	REVISED -
FILE NAME = D:\2008 SHT TypSecFr.dgn	DRAWN -	REVISED -
PLCT SCALE = 12,000 1/4 FT.	CHECKED -	REVISED -
PLGT DATE = 10/22/2012	DATE = 10/22/2012	REVISED -

STATE OF ILLINOIS  
DEPARTMENT OF TRANSPORTATION

BUTTERFIELD ROAD AT COMMONWEALTH LANE  
PROPOSED TYPICAL SECTIONS

F.A.J. RTE. 3545	SECTION 09-00170-00-CH	COUNTY	TOTAL SHEETS 108	SHEET NO. 14
FED. ROAD DIST. NO. 7 (ILLINOIS) FED. AID PROJECT			CONTRACT NO. 63742	

SCALE: NOT TO SCALE | SHEET NO. 14 OF 108 SHEETS