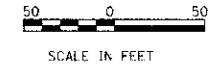
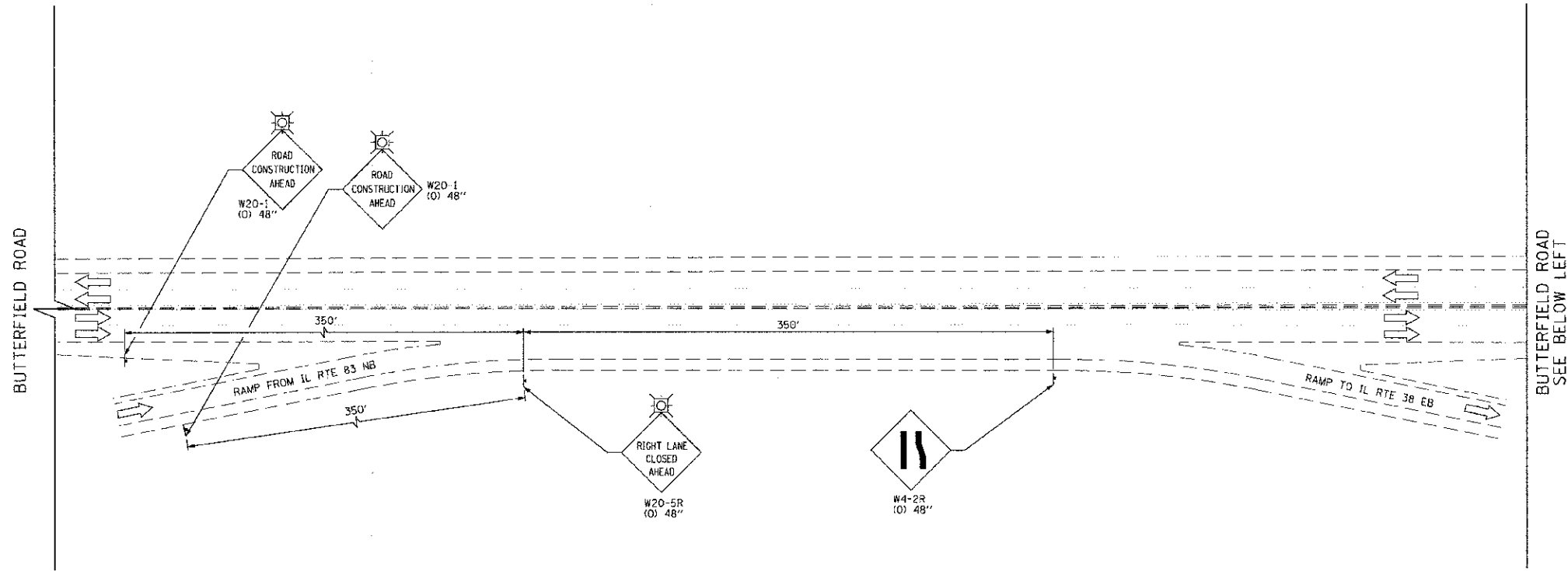
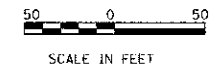
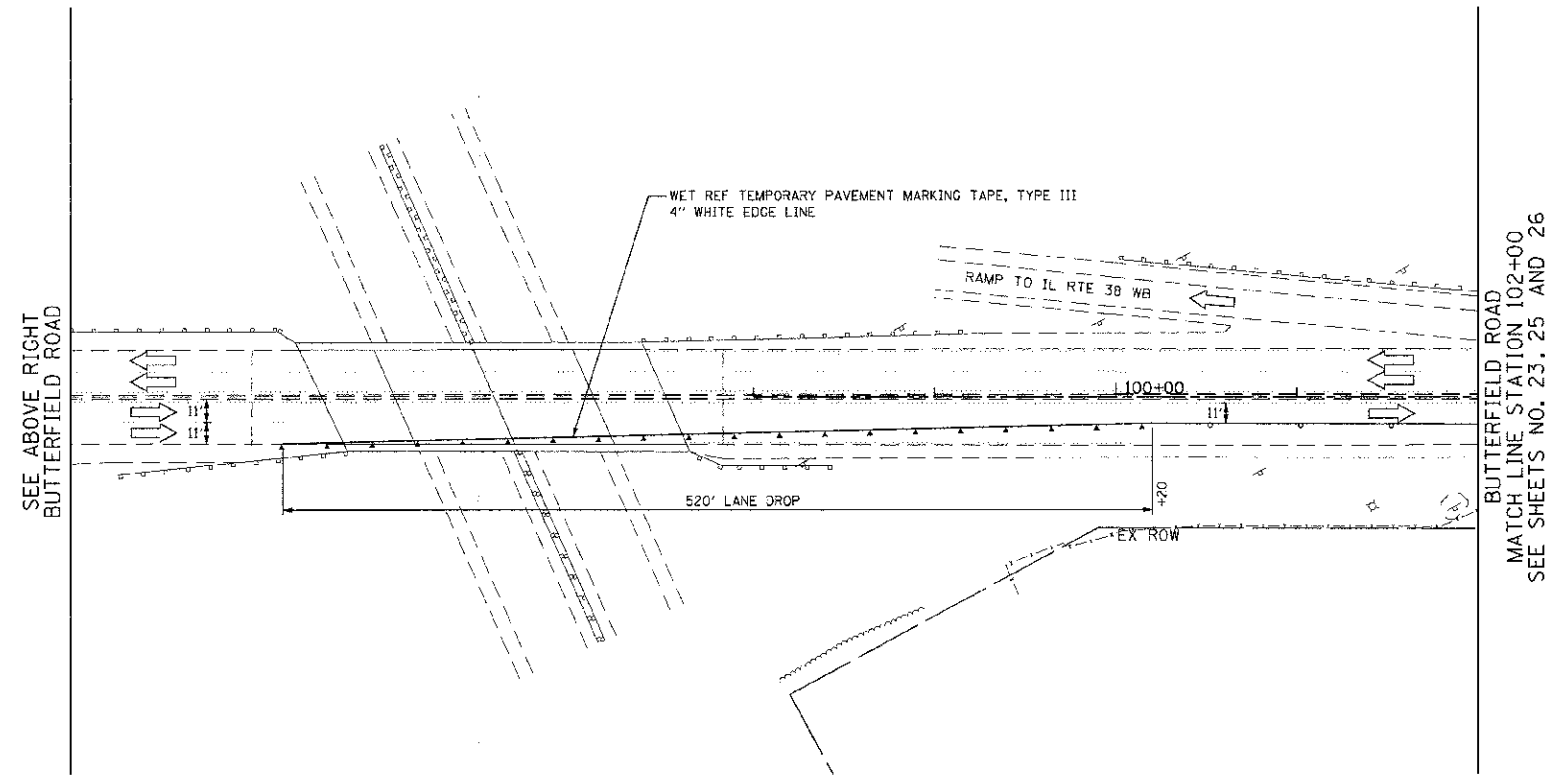


PLAN	REVIEWED	DATE
NOTED	BY	
NO. OF		
FILE		



PROFILE	REVIEWED	DATE
NOTED	BY	
NO. OF		
FILE		



LEGEND	
	CONSTRUCTION WORK ZONE
	TEMPORARY PAVEMENT TO BE CONSTRUCTED PRIOR TO STAGE 1
	ARROW BOARD
	SIGN TO BE PLACED ON PERMANENT OR PORTABLE SUPPORT
	MONODIRECTIONAL FLASHING LIGHT
	DRUMS OR TYPE II BARRICADE WITH STEADY BURN BI-DIRECTIONAL LIGHT @ 25' C-C
	TYPE III BARRICADE
	DIRECTION INDICATOR BARRICADES WITH STEADY BURN MONO-DIRECTIONAL LIGHTS AT 25' C-C
	DIRECTION OF TRAFFIC FLOW
	TEMPORARY CONCRETE BARRIER

FILE NAME = g:\h\28\0028\road\sheet\02\8008-SH1-MOT

USER NAME = tksonol1
 1-1.dgn
 PLOT SCALE = 800.0000 ft / FT.
 PLOT DATE = 10/21/2012

DESIGNED - TKS
 DRAWN - TKS
 CHECKED - JMG
 DATE - 10/22/2012

REVISED -
 REVISED -
 REVISED -
 REVISED -

**STATE OF ILLINOIS
 DEPARTMENT OF TRANSPORTATION**

**SUGGESTED CONSTRUCTION PROCEDURES AND TRAFFIC CONTROL
 BUTTERFIELD ROAD AT COMMONWEALTH LANE - STAGES 1, 2 & 3**

SCALE: 1"=50' SHEET NO. 22 OF 108 SHEETS STA. 84+00 TO STA. 102+00

F.A.J. RTE.	SECTION	COUNTY	TOTAL SHEETS	SHEET NO.
3545	09-00170-00-CH	DUPAGE	108	22
FED. ROAD DIST. NO. 7 (ILLINOIS) FED. AID PROJECT			CONTRACT NO. 63742	