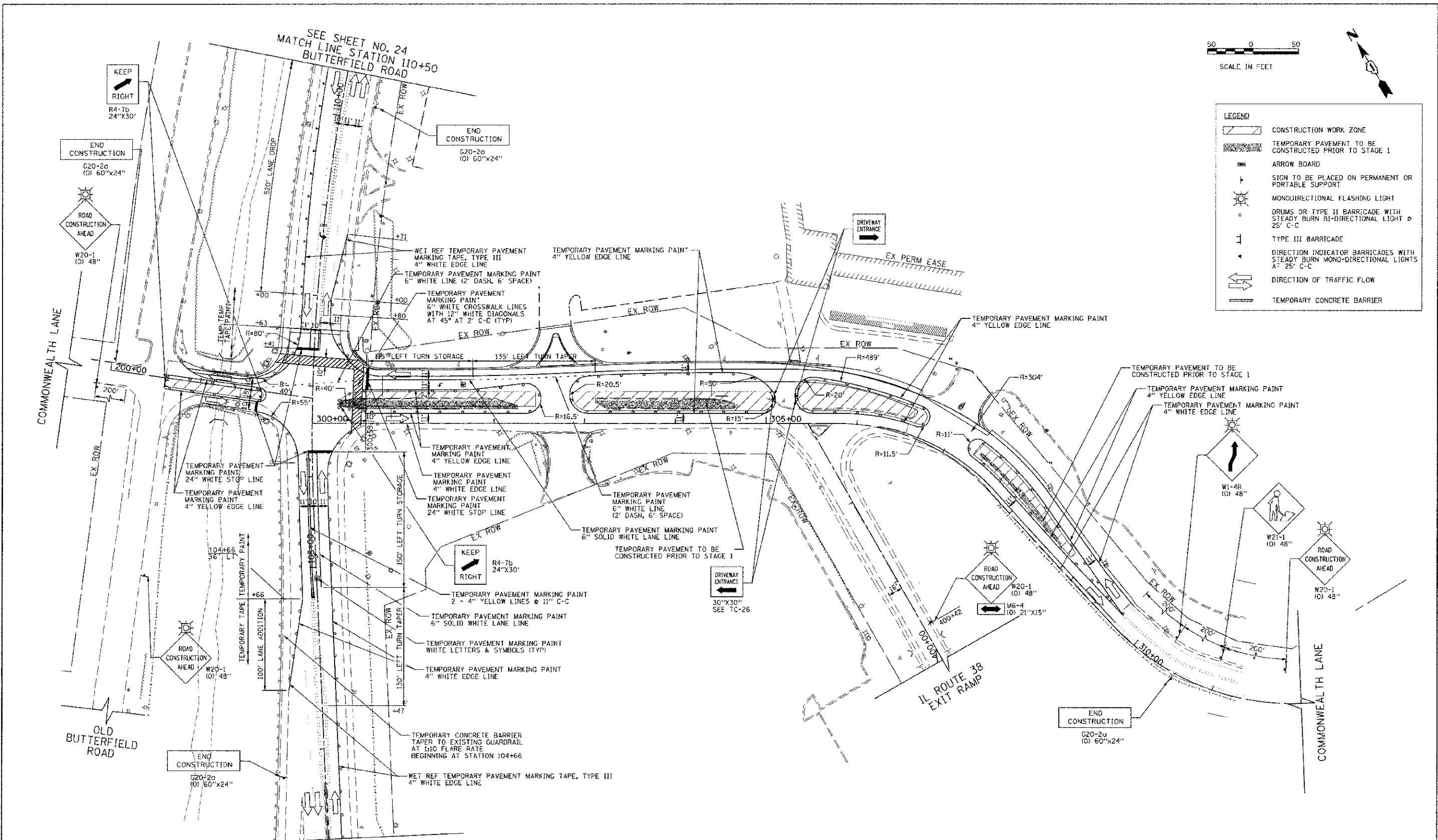


LEGEND	
	CONSTRUCTION WORK ZONE
	TEMPORARY PAVEMENT TO BE CONSTRUCTED PRIOR TO STAGE 1
	ARROW BOARD
	SIGN TO BE PLACED ON PERMANENT OR PORTABLE SUPPORT
	MONODIRECTIONAL FLASHING LIGHT
	DRUMS OR TYPE II BARRICADE WITH STEADY BURN BI-DIRECTIONAL LIGHT @ 25' C-C
	TYPE III BARRICADE
	DIRECTION INDICATOR BARRICADES WITH STEADY BURN MONO-DIRECTIONAL LIGHTS @ 25' C-C
	DIRECTION OF TRAFFIC FLOW
	TEMPORARY CONCRETE BARRIER

DATE	BY
DATE	BY

DATE	BY
DATE	BY



NOTES:

- "WORKERS" SIGN (W21-1) SHALL BE REMOVED WHEN WORKERS ARE NOT PRESENT FOR MORE THAN 1 HOUR.

FILE NAME = G:\CH28\4008\Road\Phase 2\8-nets\01x2008	USER NAME = kcalorenz	DESIGNED - TKS	REVISED -
9HT-MOT-2-2.dgn		DRAWN - TKS	REVISED -
PLOT SCALE = 5/8"=200' ft / in.		CHECKED - JMG	REVISED -
PLOT DATE = 12/4/2012		DATE - 10/22/2012	REVISED -

**STATE OF ILLINOIS
DEPARTMENT OF TRANSPORTATION**

SUGGESTED CONSTRUCTION PROCEDURES AND TRAFFIC CONTROL BUTTERFIELD ROAD AT COMMONWEALTH LANE - STAGE 2			
SCALE: 1"=50'	SHEET NO. 25 OF 108 SHEETS	STA. 300+00	TO STA. 312+00

F.A.I. RTE.	SECTION	COUNTY	TOTAL SHEETS	SHEET NO.
3545	09-00170-00-CH	DUPAGE	108	25
FED. ROAD DIST. NO. 7 (ILLINOIS) FED. AID PROJECT			CONTRACT NO. 63742	