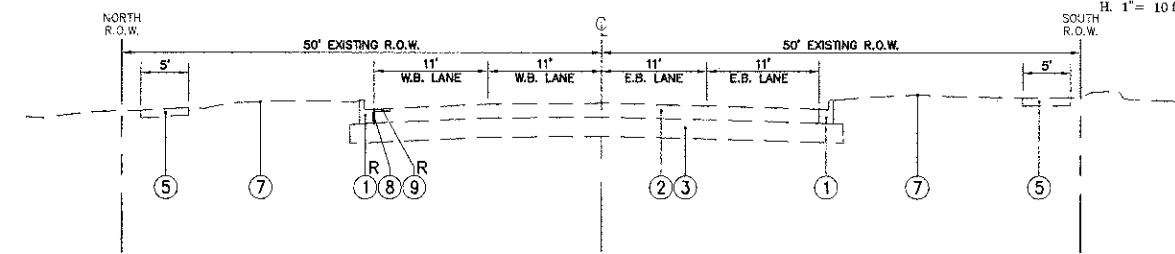
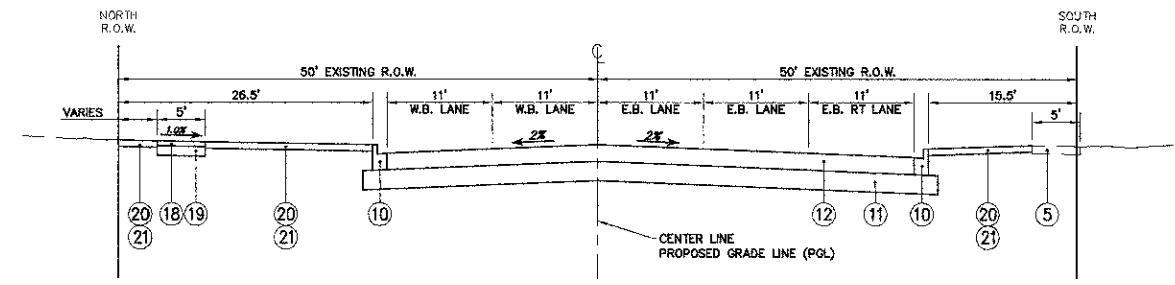


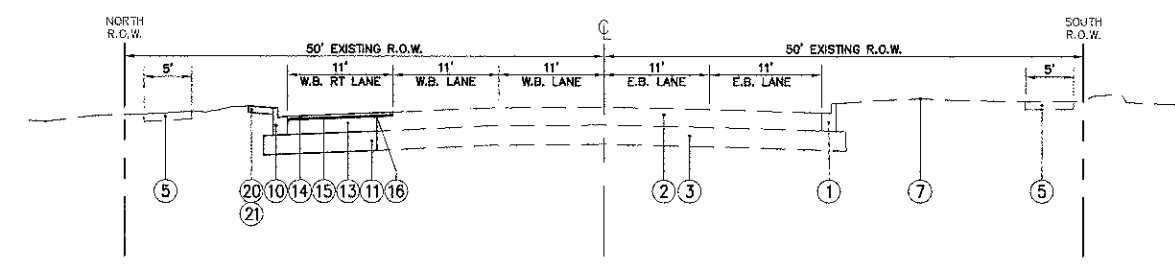
EXISTING TYPICAL SECTION
STA. 196+66 TO STA. 201+66
KENSINGTON ROAD



EXISTING TYPICAL SECTION
STA. 203+64 TO STA. 208+04
KENSINGTON ROAD



PROPOSED TYPICAL SECTION
STA. 196+66 TO STA. 201+66
KENSINGTON ROAD



PROPOSED TYPICAL SECTION
STA. 203+64 TO STA. 208+04
KENSINGTON ROAD

HOT-MIX ASPHALT MIXTURE REQUIREMENTS		
MIXTURE TYPE	AIR VOIDS @ Ndes	DEPTH
HOT-MIX ASPHALT RESURFACING		
HOT-MIX ASPHALT SURFACE COURSE, MIX "D", N50 (IL 9.5 mm)	4% @ 50 GYR	1½"
LEVELING BINDER (MACHINE METHOD), N50 (IL 9.5 mm)	4% @ 50 GYR	¾"
HOT-MIX ASPHALT FULL DEPTH		
HOT-MIX ASPHALT SURFACE COURSE, MIX "D", N50 (IL 9.5 mm)	4% @ 50 GYR	1½"
HOT-MIX ASPHALT BINDER COURSE, IL-19mm, N50	4% @ 50 GYR	9" (IN 3 LIFTS)
HOT-MIX ASPHALT DRIVEWAY PAVEMENT, 6"		
HOT-MIX ASPHALT SURFACE COURSE, MIX "D", N50 (IL 9.5mm)	4% @ 50 GYR	2"
HOT-MIX ASPHALT BINDER COURSE, IL-19mm, N50	4% @ 50 GYR	4" (IN 1 LIFT)
HOT-MIX ASPHALT DRIVEWAY PAVEMENT, 8"		
HOT-MIX ASPHALT SURFACE COURSE, MIX "D", N50 (IL 9.5mm)	4% @ 50 GYR	2"
HOT-MIX ASPHALT BINDER COURSE, IL-19mm, N50	4% @ 50 GYR	6" (IN 2 LIFTS)
HOT-MIX ASPHALT PATCHING		
CLASS D PATCH (HMA BINDER IL-19mm)	4% @ 70 GYR	10½" (IN 4 LIFTS)
HOT MIX ASPHALT WIDENING		
HOT MIX ASPHALT BASE COURSE WIDENING	4% @ 70 GYR	9" (IN 3 LIFTS)

THE UNIT WEIGHT TO CALCULATE ALL HMA SURFACE MIXTURE QUANTITIES IS 112 LBS/SY/N
 THE "AC TYPE" FOR POLYMERIZED HMA MIXES SHALL BE "SBS/SBR PG 76-22" AND FOR NON-POLYMERIZED HMA, THE "AC TYPE" SHALL BE "PG 64-22" UNLESS OTHERWISE MODIFIED BY DISTRICT ONE SPECIAL PROVISIONS.
 FOR "PERCENT OF RAP" SEE DISTRICT ONE SPECIAL PROVISIONS.

LEGEND:

- ① EXISTING B6.12 CURB & GUTTER
- ② EXISTING BITUMINOUS PAVEMENT
- ③ EXISTING AGGREGATE SUB-BASE
- ④ EXISTING AGGREGATE SHOULDER
- ⑤ EXISTING SIDEWALK
- ⑥ EXISTING DRIVEWAY
- ⑦ EXISTING GROUND
- ⑧ PROPOSED SAWCUT EXISTING PAVEMENT
- ⑨ PROPOSED HOT MIX ASPHALT SURFACE REMOVAL, 2½"
- ⑩ PROPOSED COMB. CONC CURB AND GUTTER TYPE B6.12
- ⑪ PROPOSED AGGREGATE SUB GRADE IMPROVEMENT 12"
- ⑫ PROPOSED HOT MIX ASPHALT PAVEMENT (FULL DEPTH), 10½"
- ⑬ PROPOSED HOT MIX ASPHALT BASE COURSE WIDENING, 9"
- ⑭ PROPOSED HOT MIX ASPHALT SURFACE COURSE, MIX "D", N50, 1½"
- ⑮ PROPOSED LEVELING BINDER (MACHINE METHOD) N50, ¾"
- ⑯ PROPOSED STRIP REFLECTIVE CRACK CONTROL TREATMENT
- ⑰ PROPOSED P.C.C. DRIVEWAY PAVEMENT, 6" (RESIDENTIAL)
HMA DRIVEWAY, 6" (RESIDENTIAL)
HMA DRIVEWAY, 8" (COMMERCIAL)
- ⑱ PROPOSED P.C.C. SIDEWALK, 5"
PCC SIDEWALK, 6" AT RESIDENTIAL DRIVEWAYS
- ⑲ PROPOSED SUB BASE GRANULAR MATERIAL TYPE B 4"
- ⑳ SODDING, SALT TOLERANT
- ㉑ TOPSOIL FURNISH AND PLACE 4"
- ^R ITEM TO BE REMOVED