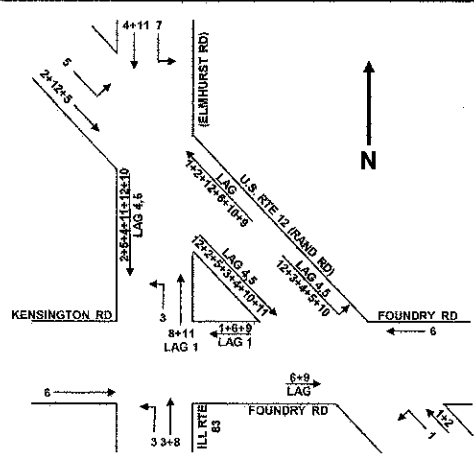


SEQUENCE OF OPERATION

Table with columns for PHASE, INTERVAL (1-14D), and CHANGE TO. Rows list various signal types and movements (R, G, Y, N/B, S/B, W/B, NW/B, SE/B) for different road intersections.

- NOTES:
1. PHASE 3 VEHICLE DETECTOR SHALL PLACE ONE VEHICLE CALL INTO PHASE 6
2. PHASE 6 MUST BE ON LOCKING DETECTION
3. PHASE 2 MUST BE ON RECALL
4. ANTI BACKUP & DUAL ENTRY SHALL BE TURNED ON FOR PHASES 3, 4, 7, & 8
5. TMD OVERLAP PHASES
6. RING STRUCTURE & PHASE ASSIGNMENT DIAGRAM



- EVP 1 = 0 1
EVP 2 = 0 5
EVP 3 = 0 3+8
EVP 4 = 0 4+7
EVP 5 = 0 6
9 CALL = 0 8 ON
10 CALL = 1, 3, 4, 7, 8, 6 CHECK
11 CALL = 0 8 ON
12 CALL = 0 5 CHECK
12 ON OMITTS 0 10
12 ON OMITTS 0 5
0 3, V.D. CALL 0 6 0 4
0 4, 0 8 ON LOCKING DETECTOR
0 9, 10, 11, 12 MUST BE "NON LOCKING"
0 4, 0 8 "DUAL ENTRY"
0 2 ON RECALL

FOR INFORMATION ONLY

FILE NAME = 4185.805 - TR1.dwg

USER NAME = GHA
PLOT SCALE = 1" = .0633'
PLOT DATE = 12/03/2012

DESIGNED - JRD
DRAWN - ZCW
CHECKED - KLB
DATE - 10/17/12

REVISED -
REVISED -
REVISED -
REVISED -

STATE OF ILLINOIS
DEPARTMENT OF TRANSPORTATION

SEQUENCE OF OPERATION
U.S. RTE 12 (RAND RD) AT IL RTE 83 (ELMHURST RD)
AND KENSINGTON ROAD / FOUNDRY ROAD

SCALE: N.A. SHEET NO. T14 OF T17 SHEETS STA. TO STA.

Table with columns: FAU. RTE., SECTION, COUNTY, TOTAL SHEETS, SHEET NO., CONTRACT #.