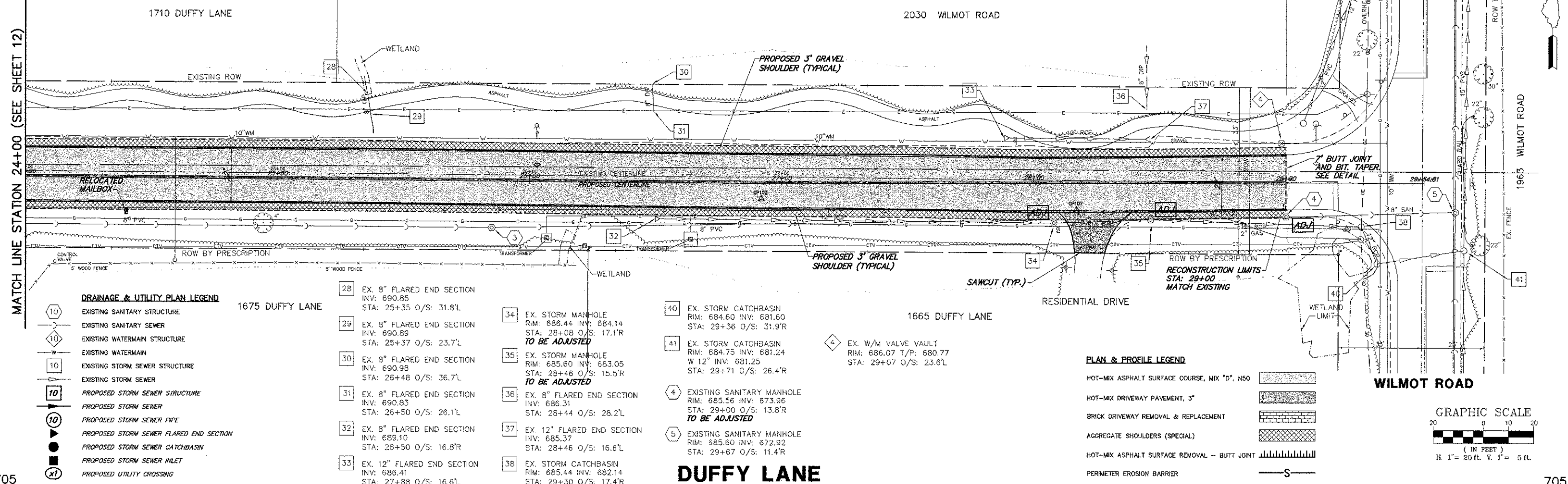


MATCH LINE STATION 24+00 (SEE SHEET 12)

END IMPROVEMENTS
STA. 29+00

WILMOT ROAD



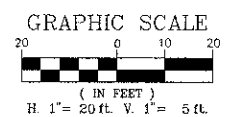
DRAINAGE & UTILITY PLAN LEGEND

- (10) EXISTING SANITARY STRUCTURE
- (10) EXISTING SANITARY SEWER
- (10) EXISTING WATERMAIN STRUCTURE
- (10) EXISTING WATERMAIN
- (10) EXISTING STORM SEWER STRUCTURE
- (10) EXISTING STORM SEWER
- (10) PROPOSED STORM SEWER STRUCTURE
- (10) PROPOSED STORM SEWER
- (10) PROPOSED STORM SEWER PIPE
- (10) PROPOSED STORM SEWER FLARED END SECTION
- (10) PROPOSED STORM SEWER CATCHBASIN
- (10) PROPOSED STORM SEWER INLET
- (X1) PROPOSED UTILITY CROSSING

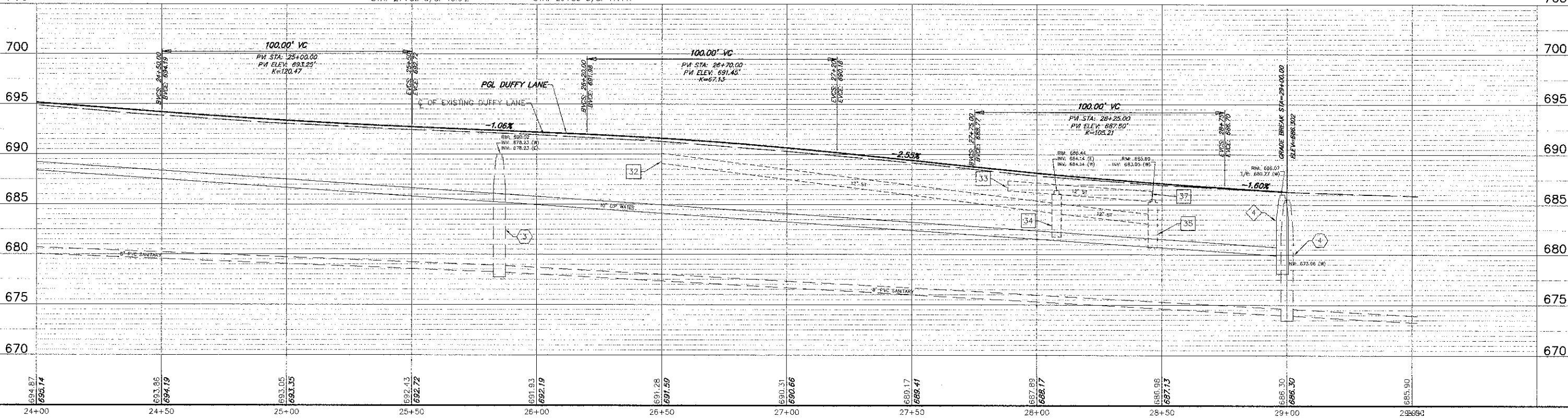
- 28 EX. 8" FLARED END SECTION
INV: 690.85
STA: 25+35 O/S: 31.8'L
- 29 EX. 8" FLARED END SECTION
INV: 690.89
STA: 25+37 O/S: 23.7'L
- 30 EX. 8" FLARED END SECTION
INV: 690.98
STA: 26+48 O/S: 36.7'L
- 31 EX. 8" FLARED END SECTION
INV: 690.83
STA: 26+50 O/S: 26.1'L
- 32 EX. 8" FLARED END SECTION
INV: 689.10
STA: 26+50 O/S: 16.8'R
- 33 EX. 12" FLARED END SECTION
INV: 686.41
STA: 27+88 O/S: 16.6'L
- 34 EX. STORM MANHOLE
RIM: 686.44 INV: 684.14
STA: 28+08 O/S: 17.1'R
TO BE ADJUSTED
- 35 EX. STORM MANHOLE
RIM: 685.60 INV: 683.05
STA: 28+46 O/S: 15.5'R
TO BE ADJUSTED
- 36 EX. 8" FLARED END SECTION
INV: 686.31
STA: 28+44 O/S: 28.2'L
- 37 EX. 12" FLARED END SECTION
INV: 685.37
STA: 28+46 O/S: 16.6'L
- 38 EX. STORM CATCHBASIN
RIM: 685.44 INV: 682.14
STA: 29+30 O/S: 17.4'R
- 40 EX. STORM CATCHBASIN
RIM: 684.60 INV: 681.60
STA: 29+36 O/S: 31.9'R
- 41 EX. STORM CATCHBASIN
RIM: 684.75 INV: 681.24
W 12" INV: 681.25
STA: 29+71 O/S: 26.4'R
- 4 EX. SANITARY MANHOLE
RIM: 685.56 INV: 673.96
STA: 29+00 O/S: 13.8'R
TO BE ADJUSTED
- 5 EXISTING SANITARY MANHOLE
RIM: 685.60 INV: 672.92
STA: 29+67 O/S: 11.4'R
- EX. W/M VALVE VAULT
RIM: 686.07 T/P: 680.77
STA: 29+07 O/S: 23.6'L

PLAN & PROFILE LEGEND

- HOT-MIX ASPHALT SURFACE COURSE, MIX "D", N50
- HOT-MIX DRIVEWAY PAVEMENT, 3"
- BRICK DRIVEWAY REMOVAL & REPLACEMENT
- AGGREGATE SHOULDERS (SPECIAL)
- HOT-MIX ASPHALT SURFACE REMOVAL -- BUTT JOINT
- PERIMETER EROSION BARRIER



DUFFY LANE



FILE NAME = B101-057 PR3.dwg	USER NAME = GW3	DESIGNED = DJG	REVISED =	STATE OF ILLINOIS DEPARTMENT OF TRANSPORTATION	PROPOSED PLAN & PROFILE / DRAINAGE AND UTILITIES		FA RTE = 1254	SECTION = 12-00013-00-RS	COUNTY = LAKE	TOTAL SHEETS = 32	SHEET NO. = 13	
	PLOT SCALE = 1:1	DRAWN = GW3	REVISED =				SCALE: AS NOTED		SHEET NO. 13 OF 32 SHEETS		CONTRACT #: 63751	
	PLOT DATE = 08.10.2012	CHECKED = DJG	REVISED =				STA. 24+00 TO STA. 29+00		ILLINOIS FED. AID PROJECT M-4003(095)			
		DATE = 08.10.2012	REVISED =									