

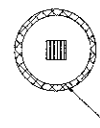
## SEDIMENTATION AND EROSION CONTROL NOTES

- THE STORM WATER POLLUTION PREVENTION PLAN (SWPPP) IS COMPRISED OF THE SOIL REVISION AND SEDIMENT CONTROL PLANS, THE STANDARD DETAILS, THE PLAN NARRATIVE, PLUS THE PERMIT AND ALL SUBSEQUENT REPORTS AND RELATED DOCUMENTS.
- ALL CONTRACTORS AND SUBCONTRACTORS INVOLVED WITH STORM WATER POLLUTION PREVENTION SHALL OBTAIN A COPY OF THE (SWPPP) AND THE ILLINOIS GENERAL CONSTRUCTION PERMIT (JLR10) AND BECOME FAMILIAR WITH THEIR CONTENTS AND SIGN THE CERTIFICATION FORMS.
- SEDIMENTATION AND EROSION CONTROL SHALL CONFORM TO FEDERAL, STATE, OR LOCAL REQUIREMENTS OR MANUAL OF PRACTICE, AS APPLICABLE. CONTRACTOR SHALL IMPLEMENT ADDITIONAL CONTROLS AS DIRECTED BY PERMITTING AGENCY, PROJECT ENGINEER OR OWNER.
- PERMITS FOR ANY CONSTRUCTION ACTIVITY IMPACTING STATE WATERS OR REGULATED WETLANDS MUST BE MAINTAINED ON SITE AT ALL TIMES.
- GENERAL CONTRACTOR SHALL DENOTE ON PLAN THE TEMPORARY PARKING AND STORAGE AREA WHICH SHALL ALSO BE USED AS THE EQUIPMENT MAINTENANCE AND CLEANING AREA, EMPLOYEE PARKING AREA, AND AREA FOR LOCATING PORTABLE FACILITIES, OFFICE TRAILERS, AND TOILET FACILITIES.
- ALL WASH WATER (CONCRETE TRUCKS, VEHICLE CLEANING, EQUIPMENT CLEANING, ETC.) SHALL BE DETAINED AND PROPERLY TREATED OR DISPOSED.
- SUFFICIENT OIL AND GREASE ABSORBING MATERIALS AND FLOTATION BOOMS SHALL BE MAINTAINED ON SITE OR READILY AVAILABLE TO CONTAIN AND CLEAN-UP FUEL OR CHEMICAL SPILLS AND LEAKS.
- DUST ON THE SITE SHALL BE CONTROLLED. THE USE OF MOTOR OILS AND OTHER PETROLEUM BASED OR TOXIC LIQUIDS FOR DUST SUPPRESSION OPERATIONS IS PROHIBITED. WATER USE MUST NOT CAUSE ADDITIONAL EROSION.
- RUBBISH, TRASH, GARBAGE, LITTER, OR OTHER SUCH MATERIALS SHALL BE DEPOSITED INTO SEALED CONTAINERS. MATERIALS SHALL BE PREVENTED FROM LEAVING THE PREMISES THROUGH THE ACTION OF WIND OR STORM WATER DISCHARGE INTO DRAINAGE DITCHES OR WATERS OF THE STATE.
- ALL STORM WATER POLLUTION PREVENTION MEASURES PRESENTED ON THIS PLAN, AND IN THE (SWPPP), SHALL BE INITIATED AS SOON AS PRACTICABLE.
- IF THE ACTION OF VEHICLES TRAVELING OVER THE GRAVEL CONSTRUCTION ENTRANCES IS NOT SUFFICIENT TO REMOVE THE MAJORITY OF DIRT, WASHING SHALL BE IMPLEMENTED AND PROVISIONS MUST BE MADE TO INTERCEPT THE WASH WATER AND TRAP THE SEDIMENT BEFORE IT IS CARRIED OFF THE SITE.
- ALL MATERIALS SPILLED, DROPPED, WASHED, OR TRACKED FROM VEHICLES ONTO ROADWAYS OR INTO STORM DRAINS MUST BE REMOVED BY THE END OF THE DAY.
- ON-SITE SOIL STOCKPILE AND BORROW AREAS SHALL BE PROTECTED FROM EROSION AND SEDIMENTATION THROUGH IMPLEMENTATION OF BEST MANAGEMENT PRACTICES. STOCKPILE AND BORROW AREA LOCATIONS SHALL BE NOTED ON THE PLAN AND PERMITTED IN ACCORDANCE WITH GENERAL PERMIT REQUIREMENTS.
- SLOPES SHALL BE LEFT IN A ROUGHENED CONDITION DURING THE GRADING PHASE TO REDUCE RUNOFF VELOCITIES AND EROSION.
- ALL CONSTRUCTION SHALL BE STABILIZED AT THE END OF EACH WORKING DAY. THIS INCLUDES BACKFILLING OF TRENCHES FOR UTILITY CONSTRUCTION AND PLACEMENT OF GRAVEL OR BITUMINOUS PAVING FOR ROAD CONSTRUCTION.
- SOIL DISTURBANCE SHALL BE CONDUCTED IN SUCH A MANNER AS TO MINIMIZE EROSION. SOIL STABILIZATION MEASURES SHALL CONSIDER THE TIME OF YEAR, SITE CONDITIONS AND THE USE OF TEMPORARY OR PERMANENT MEASURES.
- SOIL EROSION AND SEDIMENT CONTROL FEATURES SHALL BE CONSTRUCTED PRIOR TO THE COMMENCEMENT OF HYDROLOGIC DISTURBANCE OF UPLAND AREAS.
- DISTURBED AREAS SHALL BE STABILIZED WITH TEMPORARY OR PERMANENT MEASURES WITHIN 7 CALENDAR DAYS OF THE END OF ACTIVE HYDROLOGIC DISTURBANCE OR REDISTURBANCE.
- ALL TEMPORARY AND PERMANENT EROSION CONTROL MEASURES MUST BE MAINTAINED AND REPAIRED AS NEEDED. THE PROPERTY OWNER SHALL ULTIMATELY BE RESPONSIBLE FOR MAINTENANCE AND REPAIR.
- IF DEWATERING SERVICES ARE USED, ADJOINING PROPERTIES AND DISCHARGE LOCATIONS SHALL BE PROTECTED FROM EROSION. DISCHARGES SHALL BE ROUTED THROUGH AN EFFECTIVE SEDIMENT CONTROL MEASURE (e.g. SEDIMENT TRAP, SEDIMENT BASIN, OR OTHER APPROPRIATE MEASURE).
- THE EROSION CONTROL MEASURES INDICATED ON THE PLANS ARE THE MINIMUM REQUIREMENTS. ADDITIONAL MEASURES MAY BE REQUIRED, AS DIRECTED BY THE ENGINEER OR GOVERNING AGENCY.

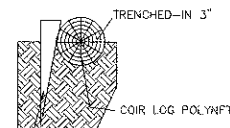
## SEQUENCE OF MAJOR ACTIVITIES

- THE VILLAGE FILES NOTICE OF INTENT (NOI) AT LEAST 30 DAYS PRIOR TO COMMENCEMENT OF CONSTRUCTION OPERATIONS.
- INSTALLATION OF SOIL EROSION AND SEDIMENT CONTROL MEASURES.
  - ORANGE CONSTRUCTION FENCING AND/OR SILT FENCE AROUND WETLANDS AND OTHER AREAS NOT TO BE DISTURBED.
  - PERIMETER SILT FENCE.
  - STABILIZED CONSTRUCTION ENTRANCE WITH WASH RACK.
  - INLET PROTECTION ON EXISTING STRUCTURES CLOSE TO THE DISTURBED AREA.
- CONTRACTOR PERFORMS WEEKLY AND "AFTER RAIN EVENT" INSPECTIONS STARTING UPON DISTURBANCE OF THE SITE (DEMOLITION OR INSTALLATION OF SOIL EROSION AND SEDIMENT CONTROL MEASURES).
- DEMOLITION
- TREE REMOVAL WHERE NECESSARY (CLEAR & GRUB).
- CONSTRUCT SEDIMENT TRAPPING DEVICES (SEDIMENT TRAPS, BASINS AND SEDIMENT REMOVAL CHANNELS).
- DEWATER INTO SEDIMENT REMOVAL CHANNEL, WHICH DISCHARGES TO AN UPLAND AREA. THE HOSE IN THE AREA BEING DEWATERED MUST BE ATTACHED TO A FLOATING DEVICE WITH A SCREEN.
- CONSTRUCT DETENTION FACILITIES AND OUTLET CONTROL STRUCTURE WITH RESTRICTOR AND TEMPORARY PERFORATED RISER. PERMANENTLY STABILIZE THE AREA WITH TOPSOIL, SEED AND EROSION CONTROL BLANKET.
- CONTRACTOR SHALL BE RESPONSIBLE FOR ESTABLISHING PLANT GROWTH IN BOTTOM AND SIDE SLOPES OF BASIN. DEWATERING, AS NEEDED, SHALL BE INCIDENTAL TO THE CONTRACTOR'S SCOPE.
- ABANDON THE EXISTING SITE STORM DRAINAGE; PROTECTION OF POINTS OF ENTRY INTO EXISTING STORM DRAINAGE SYSTEM.
- STRIP TOPSOIL, STOCK TOPSOIL AND GRADE SITE.
- TEMPORARY CONTAINMENT OF SOIL/AGGREGATE STOCKPILES (SEED AND SILT FENCE AROUND TOE OF SLOPE).
- INSTALL UTILITIES AND ASSOCIATED INLET & OUTLET PROTECTION.
- CONSTRUCT BUILDING AND PAVEMENT.
- FINE GRADE.
- INSTALL TOPSOIL, SEED, AND PERMANENT EROSION CONTROL.
- REMOVE TEMPORARY EROSION CONTROL MEASURE - ONLY - WHEN SITE HAS ACHIEVED FULL STABILIZATION.
- THE VILLAGE TO FILE NOTICE OF TERMINATION (NOT).

### PLAN VIEW

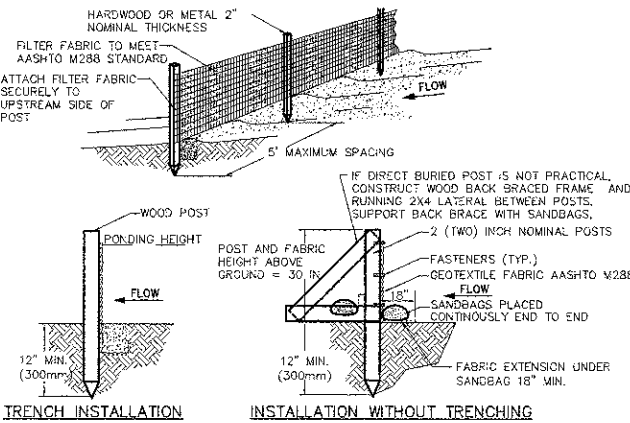


### SECTION VIEW



- COIR LOG POLYNET  
DROP INLET OR MANHOLE  
INLET PROTECTION FOR DROP INLETS OR MANHOLES
- \* USE 9LB DENSITY 12" DIAMETER, 20' LONG COIR LOG POLYNET FOR STANDARD CIRCULAR DRAINAGE STRUCTURES. PLACE THE COIR LOG AROUND THE STRUCTURE AND JOIN THE ENDS TOGETHER WITH COIR TWINE. USE 2"x2"x24" WOODEN STAKES SPACED 3' APART TO HOLD DOWN LOG POLYNET.
- NOTES:  
1. DO NOT SCALE DRAWING.  
2. REFER TO MANUFACTURER'S PRODUCT SPECIFICATIONS TO ENSURE QUALITY OF THE PRODUCTS.
- MAINTENANCE:  
1. CLEAN OUT SEDIMENT BEHIND LOG WHEN 1/2 FULL  
2. RESECURE LOOSE LOGS  
3. REPLACE LOSS AS NEEDED  
4. REMOVE WHEN NOT NEEDED

## COIR ROLL DETAIL INLET PROTECTION

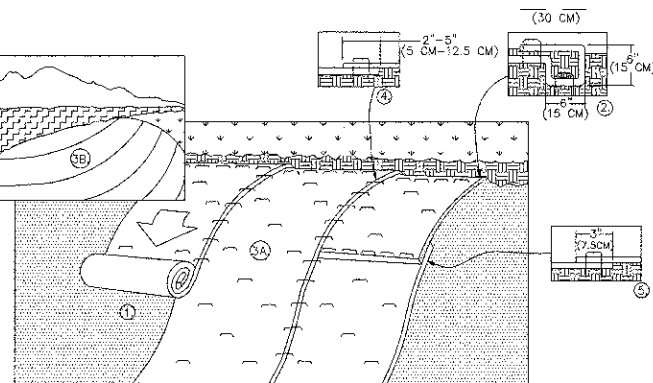


- SET POSTS AND EXCAVATE OR SLIT-TRENCH A 5-INCH DEEP TRENCH UPSLOPE ALONG THE LINE OF THE POST
- ATTACH AASHTO GEOTEXTILE FILTER FABRIC TO EACH POST WITH A MAXIMUM OF THREE FASTENERS PER POST AND EXTEND TO THE BOTTOM OF THE TRENCH. ACCEPTABLE FASTENERS INCLUDE STAPLES, ZIP-TIES, OR WIRE TIES.
- BACKFILL AND COMPACT THE EXCAVATED SPOIL MATERIALS

PROPERTY	TEST PROCEDURE
Grab Elevation	
Machine Direction	ASTM D-4833 123 lbs
T-machine Direction	ASTM D-4833 101 lbs
Permittivity	ASTM D-4491 0.05 sec <sup>-1</sup>
A.S.D.	ASTM D-4751 30 u.s. Sieve
UV Stability	ASTM D-4355 70%

- NOTES:  
1. SILT FENCE SHALL BE PLACED ON SLOPE CONTOURS TO MAXIMIZE PONDING EFFICIENCY.  
2. INSPECT AND REPAIR FENCE AFTER EACH STORM EVENT AND REMOVE SEDIMENT WHEN NECESSARY. 9" (225mm) MAXIMUM RECOMMENDED STORAGE HEIGHT.  
3. REMOVE SEDIMENT SHALL BE DEPOSITED TO AN AREA THAT WILL NOT CONTRIBUTE SEDIMENT OFF-SITE AND CAN BE PERMANENTLY STABILIZED.  
4. FABRIC AND INSTALLATION SHALL MEET THE REQUIREMENTS OF AASHTO STANDARD SPECIFICATION M-288-00.  
5. SLONG METHOD IS PREFERRED.

## SILT FENCE INSTALLATION DETAIL



STAPLE PLACEMENTS SHOWN FOR ILLUSTRATIVE PURPOSES ONLY. SEE STAPLE PATTERN GUIDES FOR ACTUAL RECOMMENDED PLACEMENTS.

- PREPARE SOIL BEFORE INSTALLING ROLLED EROSION CONTROL PRODUCTS (RECP'S), INCLUDING ANY NECESSARY APPLICATION OF LIME, FERTILIZER, AND SEED.
  - BEGIN AT THE TOP OF THE SLOPE BY ANCHORING THE RECP'S IN A 6" (15 CM) WIDE TRENCH WITH APPROXIMATELY 12" (30 CM) APART IN THE BOTTOM OF THE TRENCH. BACKFILL AND COMPACT THE TRENCH AFTER STAPLING. APPLY SEED TO COMPACTED SOIL AND FOLD REMAINING 12" (30 CM) PORTION OF RECP'S BACK OVER SEED AND COMPACTED SOIL. SECURE RECP'S OVER COMPACTED SOIL WITH A ROW OF STAPLES/STAKES SPACED APPROXIMATELY 12" (30 CM) APART ACROSS THE WIDTH OF THE RECP'S.
  - ROLL THE RECP'S (A) DOWN OR (B) HORIZONTALLY ACROSS THE SLOPE. RECP'S WILL UNROLL WITH APPROPRIATE SIDE AGAINST SOIL SURFACE. ALL RECP'S MUST BE SECURELY FASTENED TO SOIL SURFACE BY PLACING STAPLES/STAKES IN APPROPRIATE LOCATIONS AS SHOWN IN THE STAPLE PATTERN GUIDE. WHEN USING THE DOT SYSTEM, STAPLES/STAKES SHOULD BE PLACED THROUGH EACH OF THE COLORED DOTS CORRESPONDING TO THE APPROPRIATE STAPLE PATTERN.
  - THE EDGES OF PARALLEL RECP'S MUST BE STAPLED WITH APPROXIMATELY 2"-5" (5 CM - 12.5 CM) OVERLAP DEPENDING ON RECP'S TYPE.
  - CONSECUTIVE RECP'S SPUNCE DOWN THE SLOPE MUST BE PLACED END OVER END (SHINGLE STYLE) WITH AN APPROXIMATE 3" (7.5 CM) OVERLAP. STAPLE THROUGH OVERLAPPED AREA, APPROXIMATELY 12" (30 CM) APART ACROSS ENTIRE RECP'S WIDTH.
- NOTE:  
\* IN LOOSE SOIL CONDITIONS, THE USE OF STAPLE OR STAKE LENGTHS GREATER THAN 6" (15 CM) MAY BE NECESSARY TO PROPERLY SECURE THE RECP'S.

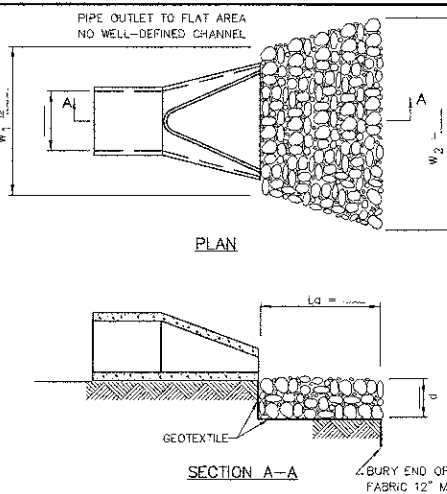


### CRITICAL POINTS

- OVERLAPS AND SEAMS
- PROJECTED WATER LINE
- CHANNEL BOTTOM/SIDE SLOPE VERTICES

## EROSION CONTROL BLANKET SLOPE INSTALLATION

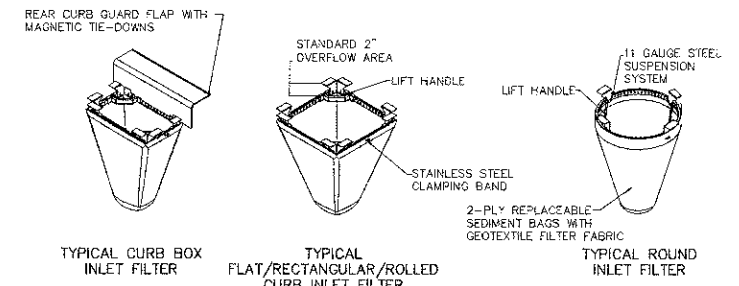
## PIPE OUTLET TO FLAT AREA



- NOTES:  
1. ALL GEOTEXTILE SHALL BE NON-WOVEN TABLE 1, CLASS 2 MATERIAL.  
2. THE RIPRAP SHALL BE PLACED ACCORDING TO CONSTRUCTION SPECIFICATION 61 LOOSE ROCK RIPRAP. THE ROCK MAY BE EQUIPMENT PLACED.

DESIGNED BY: NRC'S  
PROJECT: 1254  
DATE: 08-10-2012

REVISIONS: NO. 1  
DATE: 08-10-2012

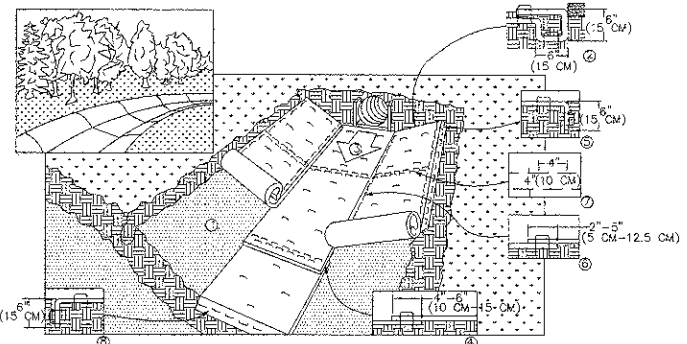


ACCEPTABLE MANUFACTURER'S AS LISTED BELOW 1. INLET & PIPE PROTECTION, INC. Naperville, IL 60564 847 722-0890  
2. MARATHON MATERIALS, INC. Plainfield, IL 60544 800-983-9493

MAINTENANCE:  
1. CLEAN OUT AFTER EVERY RAIN EVENT

Material Property	Test Method	Value (Min. ave.)
> Inner Filter Bag Specs (217-min vol)	Non-Woven	Woven Mfg.
Grab Tensile	ASTM D 4832	100 lbs 250 lbs
Puncture Strength	ASTM D 4833	95 lbs 90 lbs
Trapezoidal Tear	ASTM D 4535	45 lbs 75 lbs
UV Resistance	ASTM D 4355	70% at 500 hrs 90%
App. Open Size (AOS)	ASTM D 4751	70 sieve (425 mic) 40 sieve (425 mic)
Permittivity	ASTM D 4491	2.0/sec 2.1/sec
Water Flow Rate	ASTM D 4491	145 gpm/sqft 145 gpm/sqft
> Polyester Outer Reinforcement Bag Specifications		
Weight	ASTM D 3775	4.35 oz/sqyd +/- 12%
Thickness	ASTM D 1777	0.40 +/- .005
> Frame Construction		
A36 Structural Steel	ASTM A 576	Tensile Strength > 58,000 psi
11 Gauge, Zinc Plated		Yield Strength > 35,000 psi

## INLET FILTER BASKET DETAIL



- PREPARE SOIL BEFORE INSTALLING ROLLED EROSION CONTROL PRODUCTS (RECP'S), INCLUDING ANY NECESSARY APPLICATION OF LIME, FERTILIZER, AND SEED.
  - BEGIN AT THE TOP OF THE CHANNEL BY ANCHORING THE RECP'S IN A 6" (15 CM) DEEP X 6" (15 CM) WIDE TRENCH WITH APPROXIMATELY 12" (30 CM) OF RECP'S EXTENDED BEYOND THE UPRIGHT PORTION OF THE TRENCH. ANCHOR THE RECP'S WITH A ROW OF STAPLES/STAKES APPROXIMATELY 12" (30 CM) APART IN THE BOTTOM OF THE TRENCH. BACKFILL AND COMPACT THE TRENCH AFTER STAPLING. APPLY SEED TO COMPACTED SOIL AND FOLD REMAINING 12" (30 CM) PORTION OF RECP'S BACK OVER SEED AND COMPACTED SOIL. SECURE RECP'S OVER COMPACTED SOIL WITH A ROW OF STAPLES/STAKES SPACED APPROXIMATELY 12" (30 CM) ACROSS THE WIDTH OF THE RECP'S.
  - ROLL CENTER RECP'S IN DIRECTION OF WATER FLOW IN BOTTOM OF CHANNEL. RECP'S WILL UNROLL WITH APPROPRIATE SIDE AGAINST THE SOIL SURFACE. ALL RECP'S MUST BE SECURELY FASTENED TO SOIL SURFACE BY PLACING STAPLES/STAKES IN APPROPRIATE LOCATIONS AS SHOWN IN THE STAPLE PATTERN GUIDE. WHEN USING THE DOT SYSTEM, STAPLES/STAKES SHOULD BE PLACED THROUGH EACH OF THE COLORED DOTS CORRESPONDING TO THE APPROPRIATE STAPLE PATTERN.
  - PLACE CONSECUTIVE RECP'S END OVER END (SHINGLE STYLE) WITH A 4"-6" (10 CM-15 CM) OVERLAP. USE A DOUBLE ROW OF STAPLES STAGGERED 4" (10 CM) APART AND 4" (10 CM) CENTER TO SECURE RECP'S.
  - FULL LENGTH EDGE OF RECP'S AT TOP OF SLOPE MUST BE ANCHORED WITH A ROW OF STAPLES/STAKES APPROXIMATELY 12" (30 CM) APART IN A 6" (15 CM) X 6" (15 CM) WIDE TRENCH. BACKFILL AND COMPACT THE TRENCH AFTER STAPLING.
  - ADJACENT RECP'S MUST BE OVERLAPPED APPROXIMATELY 2"-5" (5 CM-12.5 CM) (DEPENDENT ON RECP'S TYPE) AND STAPLED.
  - IN HIGH FLOW CHANNEL APPLICATIONS, A STAPLE CHECK SLOT IS RECOMMENDED AT 30 TO 40 FOOT (9 M-12 M) INTERVALS USE A DOUBLE ROW OF STAPLES STAGGERED 4" (10 CM) APART AND 4" (10 CM) CENTER OVER ENTIRE WIDTH OF THE CHANNEL.
  - THE TERMINAL END OF THE RECP'S MUST BE ANCHORED WITH A ROW OF STAPLES/STAKES APPROXIMATELY 12" (30 CM) APART IN A 6" (15 CM) X 6" (15 CM) WIDE TRENCH. BACKFILL AND COMPACT THE TRENCH AFTER STAPLING.
- NOTE:  
\* IN LOOSE SOIL CONDITIONS, THE USE OF STAPLE OR STAKE LENGTHS GREATER THAN 6" (12 CM) MAY BE NECESSARY TO PROPERLY ANCHOR THE RECP'S.

- NOTE:  
\* HORIZONTAL STAPLE SPACING SHOULD BE ALTERED IF NECESSARY TO ALLOW STAPLES TO SECURE THE CRITICAL POINTS ALONG THE CHANNEL SURFACE.  
\*\* IN LOOSE SOIL CONDITIONS, THE USE OF STAPLE OR STAKE LENGTHS GREATER THAN 6" (15 CM) MAY BE NECESSARY TO PROPERLY ANCHOR THE RECP'S.

## EROSION CONTROL BLANKET CHANNEL INSTALLATION

FILE NAME = 8101-057 PR8.dwg	USER NAME = GWJ	DESIGNED - DJG	REVISED -	STATE OF ILLINOIS DEPARTMENT OF TRANSPORTATION	EROSION CONTROL PLAN	FA RTE 1254	SECTION 12-00013-00-RS	COUNTY LAKE	TOTAL SHEETS 32	SHEET NO. 16
	PLOT SCALE = 1:1	CHECKED - DJG	REVISED -		SCALE: NO SCALE	SHEET NO. 16 OF 32 SHEETS		CONTRACT # 63751		
	PLOT DATE = 08.10.2012	DATE - 08.10.2012	REVISED -		STA. TO STA.			ILLINOIS FED. AID PROJECT M-4003(095)		