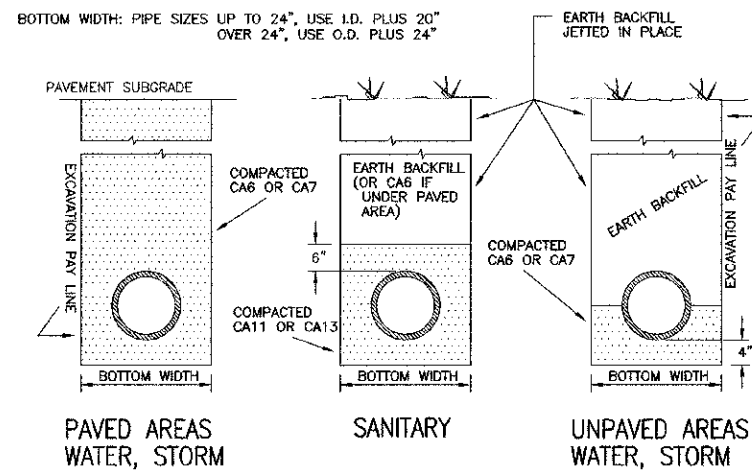
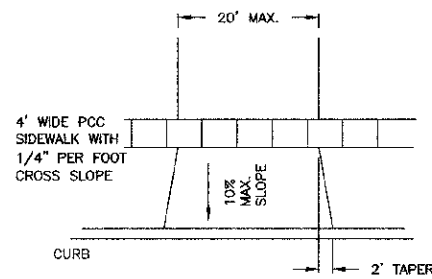


STANDARD TRENCH SECTIONS



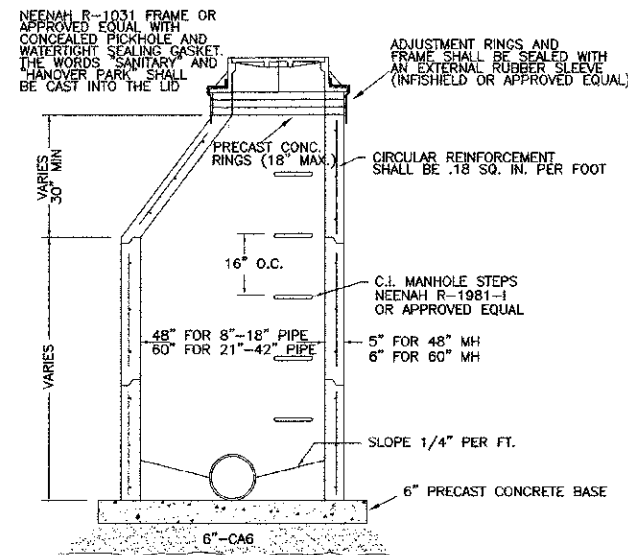
RESIDENTIAL DRIVEWAY AND SIDEWALK DETAIL



BITUMINOUS DRIVEWAYS TO BE 6" STONE AND 2" ASPHALT OR 5" CLASS SI NONREINFORCED CONCRETE OVER 2" COMPACTED GRANULAR SUBBASE

SIDEWALK TO BE 5" CLASS SI CONCRETE (6" AT DRIVEWAYS) OVER 4" COMPACTED GRANULAR SUBBASE. CONSTRUCTION JOINTS TO BE 4' ON CENTER, EXPANSION JOINTS 50'

SANITARY SEWER MANHOLE

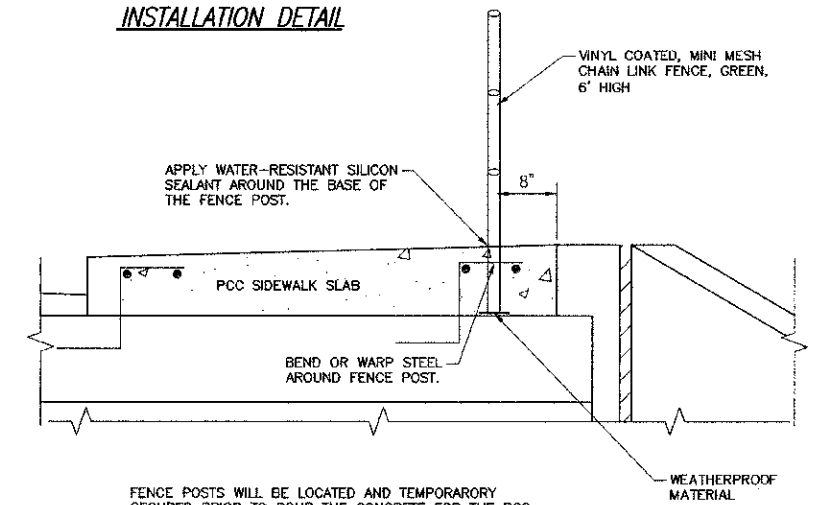


PRE-CAST REINFORCED CONCRETE RISER RINGS AND DOMES SHALL COMPLY WITH ASTM C-39.

ALL JOINTS BETWEEN PRE-CAST ELEMENTS, ADJUSTING RINGS AND MANHOLE FRAMES SHALL BE SET IN PLACE WITH A BUTYL RUBBER JOINT SEALANT.

ALL SANITARY SEWER MANHOLES SHALL BE CONSTRUCTED WITH FLEXIBLE MANHOLE COUPLINGS.

FENCE IN CULVERT'S SIDEWALK INSTALLATION DETAIL



FENCE POSTS WILL BE LOCATED AND TEMPORARILY SECURED PRIOR TO POUR THE CONCRETE FOR THE PCC SIDEWALK SLAB OVER THE CULVERT.

A WEATHERPROOF MATERIAL WILL BE PLACED AT EACH POST LOCATION FOR THE POST TO REST ON.

THE FENCE POSTS ARE NOT TO BE PERMANENTLY MOUNTED TO OR SECURED IN ANY WAY TO THE BOX CULVERT.

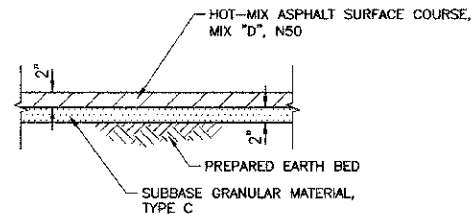
THE FENCE POSTS SHOULD BE LOCATED 8" FROM THE RIGHT EDGE OF THE PROPOSED PCC SIDEWALK SLAB.

WHERE A FENCE POST CONFLICTS WITH ANY REINFORCING STEEL, BEND OR WARP THE STEEL AROUND THE FENCE POST.

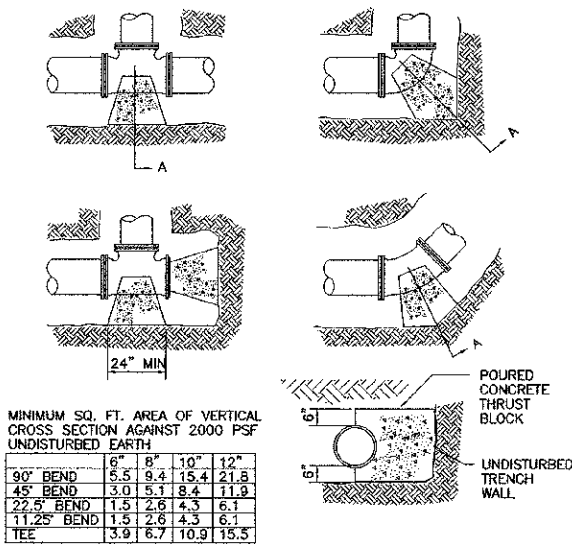
A WATER-RESISTANT SILICON SEALANT SHALL BE APPLIED AT THE BASE OF THE POST AROUND EACH POST LOCATION IN THE PCC SIDEWALK SLAB.

THE WORK AND MATERIALS DESCRIBED IN THIS DETAIL ARE INCLUDED IN THE COST IF THE FENCE ITEM.

HOT-MIX ASPHALT SHOULDERS

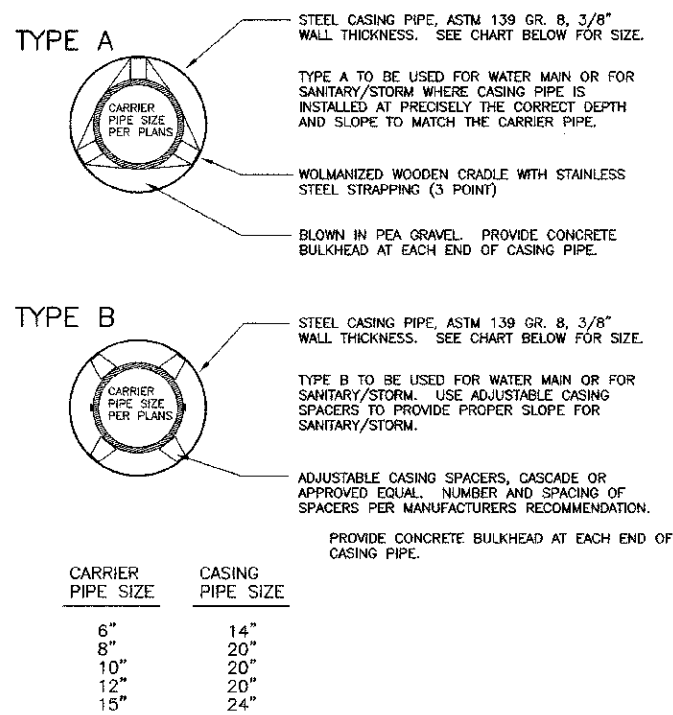


THRUST BLOCK INSTALLATION

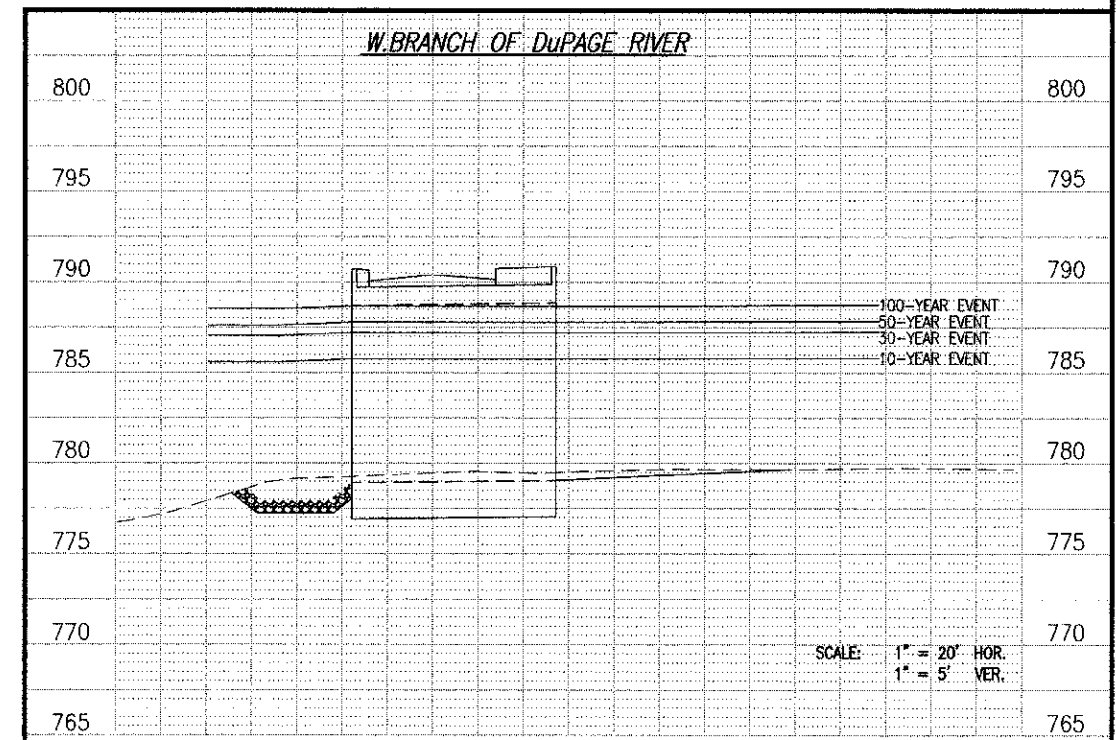
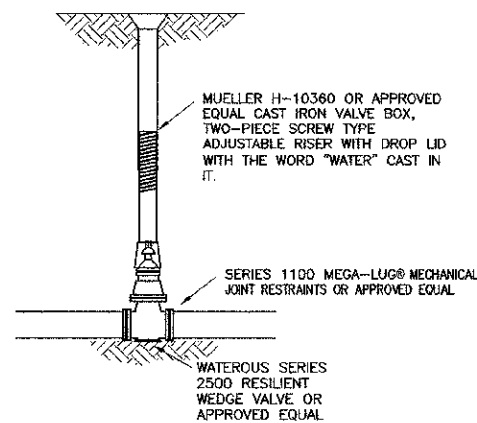


THRUST BLOCKING TO PREVENT MOVEMENT OF LINES UNDER PRESSURE AT BENDS, TEES, CAPS, VALVES, HYDRANTS AND AT POINTS SPECIFIED BY THE ENGINEER SHALL BE CLASS "SI" CONCRETE, A MINIMUM OF 12" THICK, PLACED BETWEEN SOLID GROUND AND FITTING, AND SHALL BE ANCHORED IN SUCH A MANNER THAT PIPE AND FITTING WILL BE ACCESSIBLE FOR REPAIRS. THRUST BLOCKS SHALL BE PLACED AT BENDS OF 11-1/4 DEGREES OR MORE. RETAINER GLANDS MAY BE USED IN PLACE OF THRUST BLOCKS. THE COST OF THRUST BLOCKS OR RETAINER GLANDS SHALL BE INCLUDED IN THE COST OF THE FITTING.

AUGER/CASING DETAIL



VALVE BOX



Nov 09, 2012 - 8:08am \\server\cadd\02841.DS\02841.DS-15 - Details.dwg

DATE	BY	DESCRIPTION	DATE	BY	DESCRIPTION
10-22-12	JR	REVISED PLANS PER COMMENTS FROM IDOT, HANOVER PARK, & NORTH COOK SWCD.			
11-08-12	JR	REVISED PLANS PER COMMENTS FROM IDOT DATED 11-02-12.			

PLOTTED BY: AMR CHECKED BY: JP DRAWN BY: AMR CHECKED BY: JR APPROVED BY: DAM	pma Engineers Pavia-Marting & Co. 910 W. Lake St. Roselle, IL 60172 630-529-8000 Fax: 630-894-4910 <small>Design Firm: Professional Registration # 034-002374</small>	TITLE: LONGMEADOW LANE BOX CULVERT REPLACEMENT HANOVER PARK, IL DETAILS & W. BRANCH OF DUPAGE RIVER PROFILE	SCALE: NONE DATE: 8/6/2012 JOB NO: 02841.DS SHEET 15 OF 20
--	---	---	---