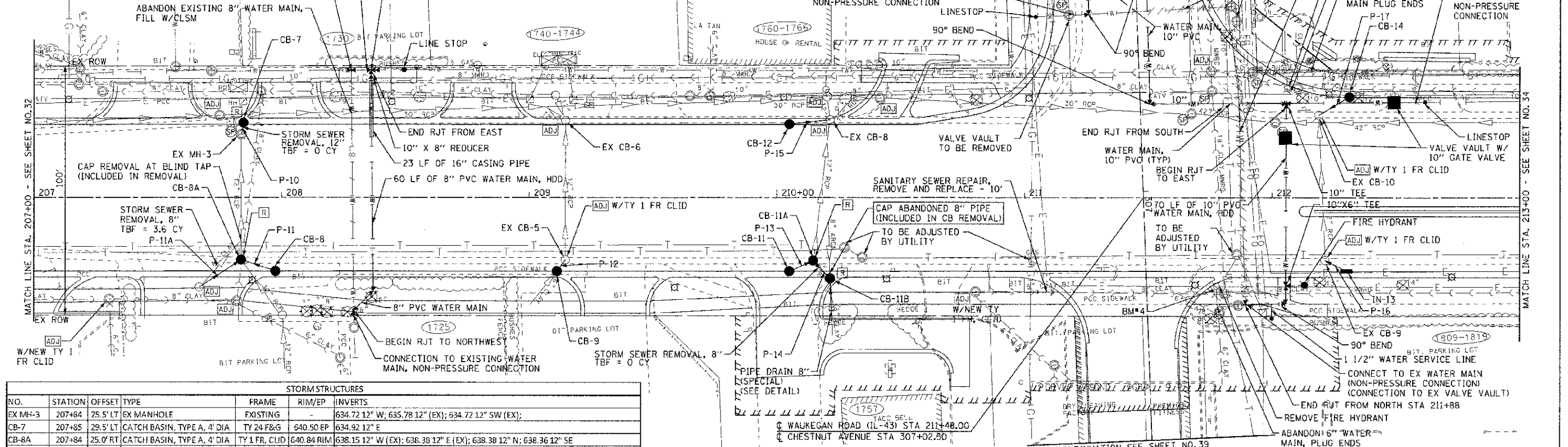


NOTE:

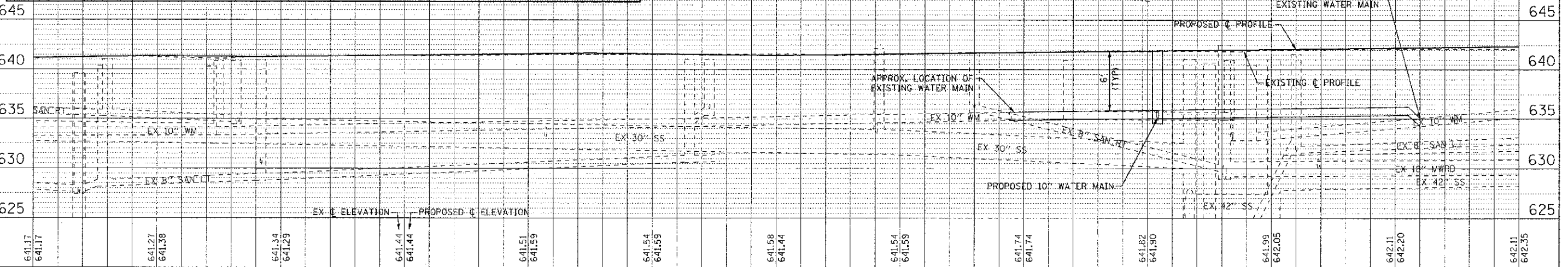
MAKE NON-PRESSURE CONNECTION AT 1730 WAUKEGAN ROAD SATURDAY AFTER 1 PM OR SUNDAY

CONNECTION TO EXISTING WATER MAIN, NON-PRESSURE CONNECTION
 REMOVE EXISTING 10" X 8" TEE, PROVIDE 10" DI PIPE AND PROVIDE SOLID SLEEVES



STORM STRUCTURES						
NO.	STATION	OFFSET	TYPE	FRAME	RIM/EP	INVERTS
EX MH-3	207+84	25.5' LT	EX MANHOLE	EXISTING	-	634.72 12" W; 635.78 12" (EX); 634.72 12" SW (EX);
CB-7	207+85	29.5' LT	CATCH BASIN, TYPE A, 4' DIA	TY 24 F&G	640.50 EP	634.92 12" E
CB-8A	207+84	25.0' RT	CATCH BASIN, TYPE A, 4' DIA	TY 1 FR, CLID	640.84 RIM	638.15 12" W (EX); 638.39 12" E (EX); 638.38 12" N; 638.36 12" SE
CB-8	207+97	29.5' RT	CATCH BASIN, TYPE C	TY 24 F&G	640.67 EP	638.66 12" S
EX CB-5	209+15	25.0' RT	EX CATCH BASIN	TY 1 FR, CUD	-	FIELD VERIFY
CB-9	209+11	29.5' RT	CATCH BASIN, TYPE C	TY 24 F&G	641.02 EP	638.47± 6" SE (EX-FIELD VERIFY); 638.47± 12" NW (FIELD VERIFY)
EX CB-6	209+15	31.1' LT	EX CATCH BASIN	EXISTING	640.89 EP	636.30 12" S (EX); 636.41 12" E (EX); 637.60 12" W (EX)
CB-11A	210+15	25.2' RT	CATCH BASIN, TYPE A, 4' DIA	TY 1 FR, CLID	640.98 RIM	638.39 12" W (EX); 638.50 12" NE; 638.50 12" SE
CB-11B	210+21	32.4' RT	CATCH BASIN, TYPE C	TY 1 FR, CLID	640.95 RIM	638.80 8" E; 638.60 12" SW
CB-11	210+05	29.5' RT	CATCH BASIN, TYPE C	TY 24 F&G	640.85 EP	638.6 12" NW
EX CB-8	210+21	31.4' LT	EX CATCH BASIN	EXISTING	640.71	636.36 12" E (EX); 637.26 12" W (EX); 635.85 12" NW (EX); 637.03 12" S
CB-12	210+05	29.5' LT	CATCH BASIN, TYPE C	TY 24 F&G	640.70 EP	637.35 12" N
EX CB-9	212+21	25.2' RT	EX CATCH BASIN	TY 1 FR, CLID	-	637.52 12" W (EX); 638.93 12" NE
IN-13	212+30	29.5' RT	INLET, TYPE A	TY 24 F&G	641.58 EP	639.66 12" SW
EX CB-10	212+19	33.2' LT	EX CATCH BASIN	TY 1 FR, CLID	-	637.11 12" E (EX); 637.06 12" SE (EX); 637.30 12" NW
CB-14	212+31	40.5' LT	CATCH BASIN, TYPE C	TY 24 F&G	641.25 EP	637.58 12" SE

STORM PIPES					
NO.	TYPE	LENGTH (LF)	DIA (IN)	SLOPE	TBF (CY)
P-10	SS, CLA, TYPE 1	4	12	5.00%	2.6
P-11	SS, CLA, TYPE 1	14	12	2.00%	1.9
P-11A	SS, CLA, TYPE 1	20	12	2.50%	3.3
P-12	SS, CLA, TYPE 1	5	12	0.50%	0.7
P-13	SS, CLA, TYPE 1	9	12	0.22%	1.2
P-14	SS, CLA, TYPE 1	10	12	1.00%	1.4
P-15	SS, CLA, TYPE 1	16	12	2.00%	3.0
P-16	SS, CLA, TYPE 1	9	12	8.11%	1.4
P-17	SS (WATER MAIN REQUIREMENTS)	14	12	2.00%	3.0



641.17	641.17	641.27	641.38	641.54	641.29	641.44	641.44	641.51	641.59	641.54	641.59	641.58	641.44	641.54	641.59	641.74	641.74	641.82	641.90	641.99	642.05	642.11	642.20	642.11	642.35
207+00		207+50		208+00		208+50		209+00		209+50		210+00		210+50		211+00		211+50		212+00		212+50		213+00	



DESIGNED - DSH
 DRAWN - MAC
 CHECKED - THH
 DATE - 8/23/12

REVISED - 10-12-12 PER VILLAGE
 REVISED
 REVISED
 FILE - 110025-12-DU2.sh

STATE OF ILLINOIS
 DEPARTMENT OF TRANSPORTATION

DRAINAGE AND UTILITY
 WAUKEGAN ROAD (IL-43)

SCALE: H: 1"=20' V: 1"=5'

STA. 207+00 TO STA. 213+00

F.A.P./F.A.U. RITE
 03/18/1352

SECTION
 05-00160-00-CH

COUNTY
 COOK

TOTAL SHEETS
 109

SHEET NO.
 33

CONTRACT NO.
 63756

FED. ROAD DIST. NO. 1 (ILLINOIS)

FED. AID PROJECT F-0348(35)

CONTRACT NO. 03-00160-00-CH
 DRAWN BY: MAC
 CHECKED BY: THH
 DATE: 8/23/12
 FILE: 110025-12-DU2.sh
 PROJECT: WAUKEGAN ROAD (IL-43)
 SHEET: 33 OF 109
 CONTRACT: 63756