

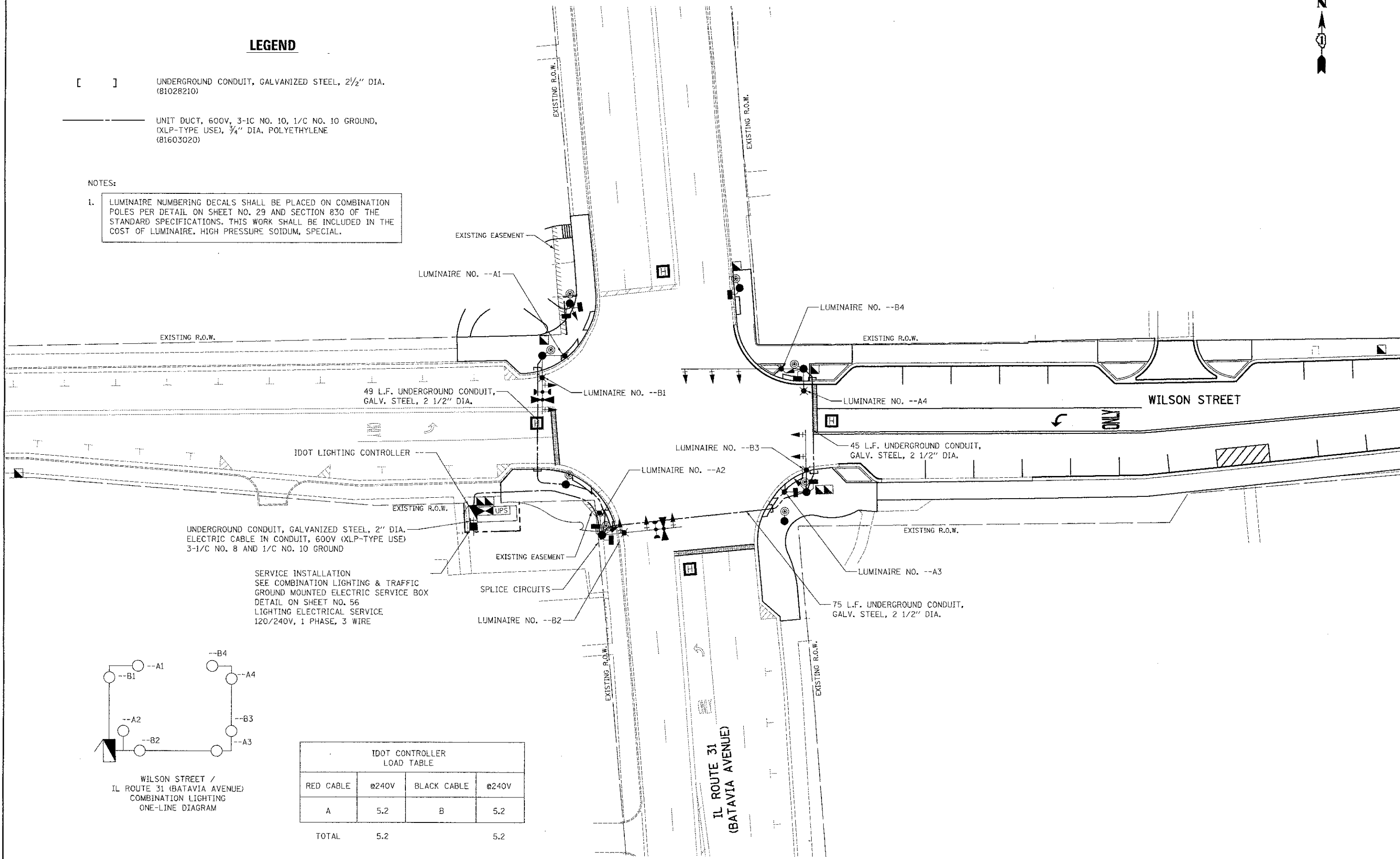


**LEGEND**

- [ ] UNDERGROUND CONDUIT, GALVANIZED STEEL, 2 1/2" DIA. (81028210)
- UNIT DUCT, 600V, 3-1C NO. 10, 1/C NO. 10 GROUND, (XLP-TYPE USE), 3/4" DIA. POLYETHYLENE (81603020)

NOTES:

1. LUMINAIRE NUMBERING DECALS SHALL BE PLACED ON COMBINATION POLES PER DETAIL ON SHEET NO. 29 AND SECTION 830 OF THE STANDARD SPECIFICATIONS. THIS WORK SHALL BE INCLUDED IN THE COST OF LUMINAIRE, HIGH PRESSURE SODIUM, SPECIAL.



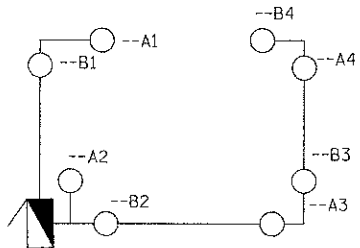
49 L.F. UNDERGROUND CONDUIT, GALV. STEEL, 2 1/2" DIA.

45 L.F. UNDERGROUND CONDUIT, GALV. STEEL, 2 1/2" DIA.

75 L.F. UNDERGROUND CONDUIT, GALV. STEEL, 2 1/2" DIA.

UNDERGROUND CONDUIT, GALVANIZED STEEL, 2" DIA. ELECTRIC CABLE IN CONDUIT, 600V (XLP-TYPE USE) 3-1/C NO. 8 AND 1/C NO. 10 GROUND

SERVICE INSTALLATION  
SEE COMBINATION LIGHTING & TRAFFIC GROUND MOUNTED ELECTRIC SERVICE BOX DETAIL ON SHEET NO. 56  
LIGHTING ELECTRICAL SERVICE  
120/240V, 1 PHASE, 3 WIRE



WILSON STREET / IL ROUTE 31 (BATAVIA AVENUE) COMBINATION LIGHTING ONE-LINE DIAGRAM

IDOT CONTROLLER LOAD TABLE			
RED CABLE	Ø240V	BLACK CABLE	Ø240V
A	5.2	B	5.2
TOTAL	5.2		5.2



USER NAME = brd	DESIGNED - BRD	REVISED -
PLDT SCALE = 20,000' / 1" =	DRAWN - OJT	REVISED -
PLDT DATE = 11/28/2012	CHECKED - JJE	REVISED -
	DATE - 10/22/2012	REVISED -

STATE OF ILLINOIS  
DEPARTMENT OF TRANSPORTATION

COMBINATION LIGHTING PLAN  
WILSON STREET AT IL ROUTE 31 (BATAVIA AVENUE)

SCALE: 1"=20' SHEET NO. 1 OF 1 SHEETS STA. TO STA.

F.A.U. RTE.	SECTION	COUNTY	TOTAL SHEETS	SHEET NO.
1441	12-00073-01-TL	KANE	88	57
CONTRACT NO. 63763				
FED. ROAD DIST. NO. 1 ILLINOIS FED. AID PROJECT				