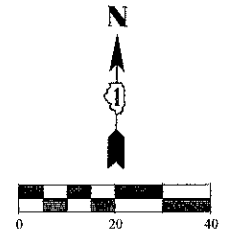
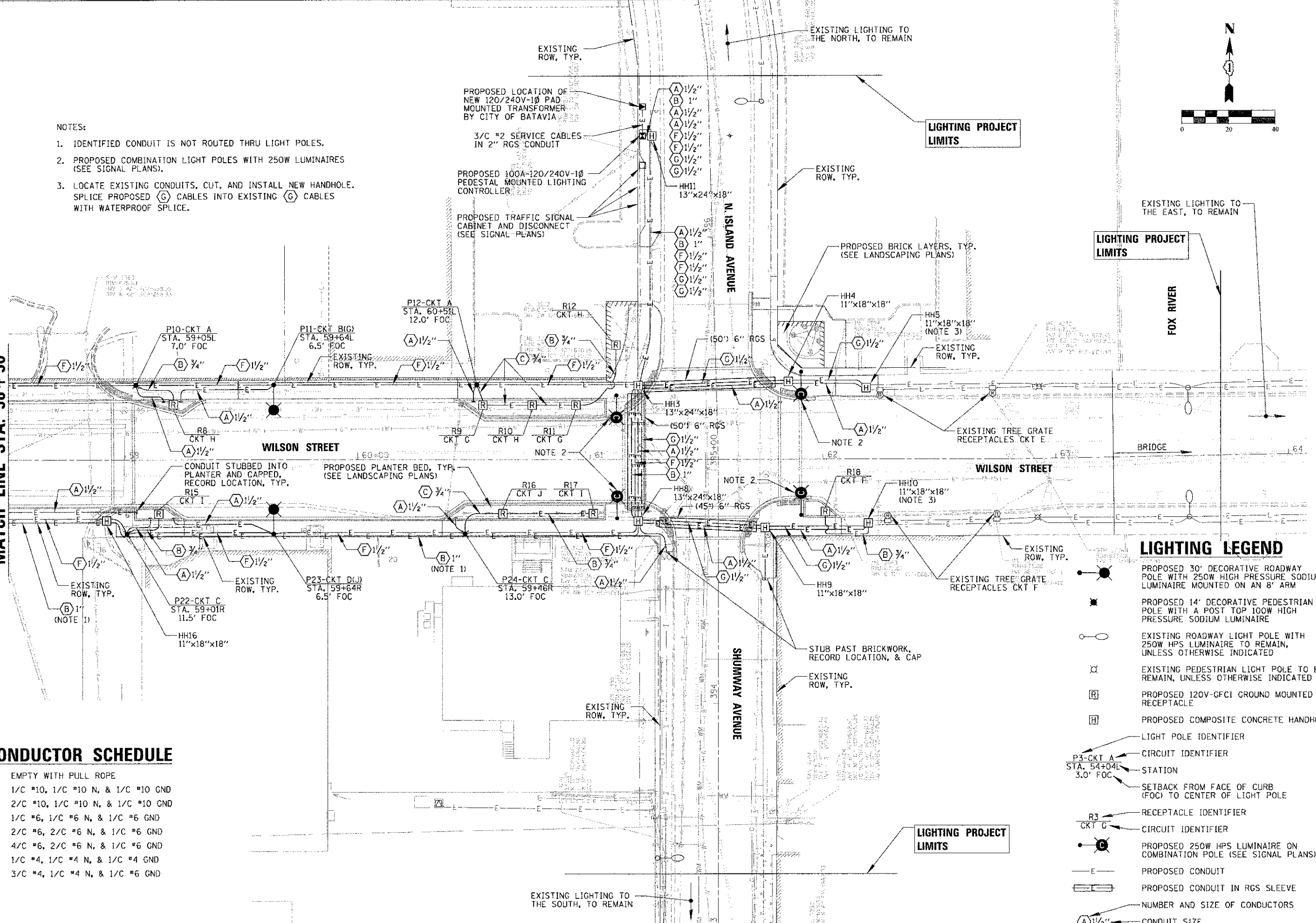


NOTES:

1. IDENTIFIED CONDUIT IS NOT ROUTED THRU LIGHT POLES.
2. PROPOSED COMBINATION LIGHT POLES WITH 250W LUMINAIRES (SEE SIGNAL PLANS).
3. LOCATE EXISTING CONDUITS, CUT, AND INSTALL NEW HANDHOLE. SPLICE PROPOSED (G) CABLES INTO EXISTING (G) CABLES WITH WATERPROOF SPLICE.



MATCH LINE STA. 58+50



CONDUCTOR SCHEDULE

- (A) EMPTY WITH PULL ROPE
- (B) 1/C #10, 1/C #10 N, & 1/C #10 GND
- (C) 2/C #10, 1/C #10 N, & 1/C #10 GND
- (D) 1/C #6, 1/C #6 N, & 1/C #6 GND
- (E) 2/C #6, 2/C #6 N, & 1/C #6 GND
- (F) 4/C #6, 2/C #6 N, & 1/C #6 GND
- (G) 1/C #4, 1/C #4 N, & 1/C #4 GND
- (H) 3/C #4, 1/C #4 N, & 1/C #6 GND

LIGHTING LEGEND

- PROPOSED 30' DECORATIVE ROADWAY POLE WITH 250W HIGH PRESSURE SODIUM LUMINAIRE MOUNTED ON AN 8' ARM
- PROPOSED 14' DECORATIVE PEDESTRIAN POLE WITH A POST TOP 100W HIGH PRESSURE SODIUM LUMINAIRE
- EXISTING ROADWAY LIGHT POLE WITH 250W HPS LUMINAIRE TO REMAIN, UNLESS OTHERWISE INDICATED
- EXISTING PEDESTRIAN LIGHT POLE TO BE REMAIN, UNLESS OTHERWISE INDICATED
- PROPOSED 120V-GFCI GROUND MOUNTED RECEPTACLE
- PROPOSED COMPOSITE CONCRETE HANDHOLE
- LIGHT POLE IDENTIFIER
- CIRCUIT IDENTIFIER
- STATION
- SETBACK FROM FACE OF CURB (FOC) TO CENTER OF LIGHT POLE
- RECEPTACLE IDENTIFIER
- CIRCUIT IDENTIFIER
- PROPOSED 250W HPS LUMINAIRE ON COMBINATION POLE (SEE SIGNAL PLANS)
- PROPOSED CONDUIT
- PROPOSED CONDUIT IN RGS SLEEVE
- NUMBER AND SIZE OF CONDUCTORS
- CONDUIT SIZE

<p>CHRISTOPHER B. BURKE ENGINEERING, LTD. 9575 W. Higgins Road, Suite 600 Rosemont, Illinois 60018 (847) 823-0500</p>	USER: RYM4 = kba1dms DESIGNED: <i>AJD</i> DRAWN: <i>KWB</i> CHECKED: <i>AJD</i> DATE: 10/22/2012	REVISIONS: REVISION 1: [] REVISION 2: [] REVISION 3: [] REVISION 4: []	F.A.U. RTE. 1441 SECTION 12-00073-01-TL COUNTY KANE TOTAL SHEETS 88 SHEET NO. 65 CONTRACT NO. 63763
	STATE OF ILLINOIS DEPARTMENT OF TRANSPORTATION		ROADWAY LIGHTING PLAN (3 OF 3) WILSON STREET SCALE: 1"=20' SHEET OF 88 SHEETS STA. TO STA.