
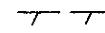


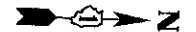


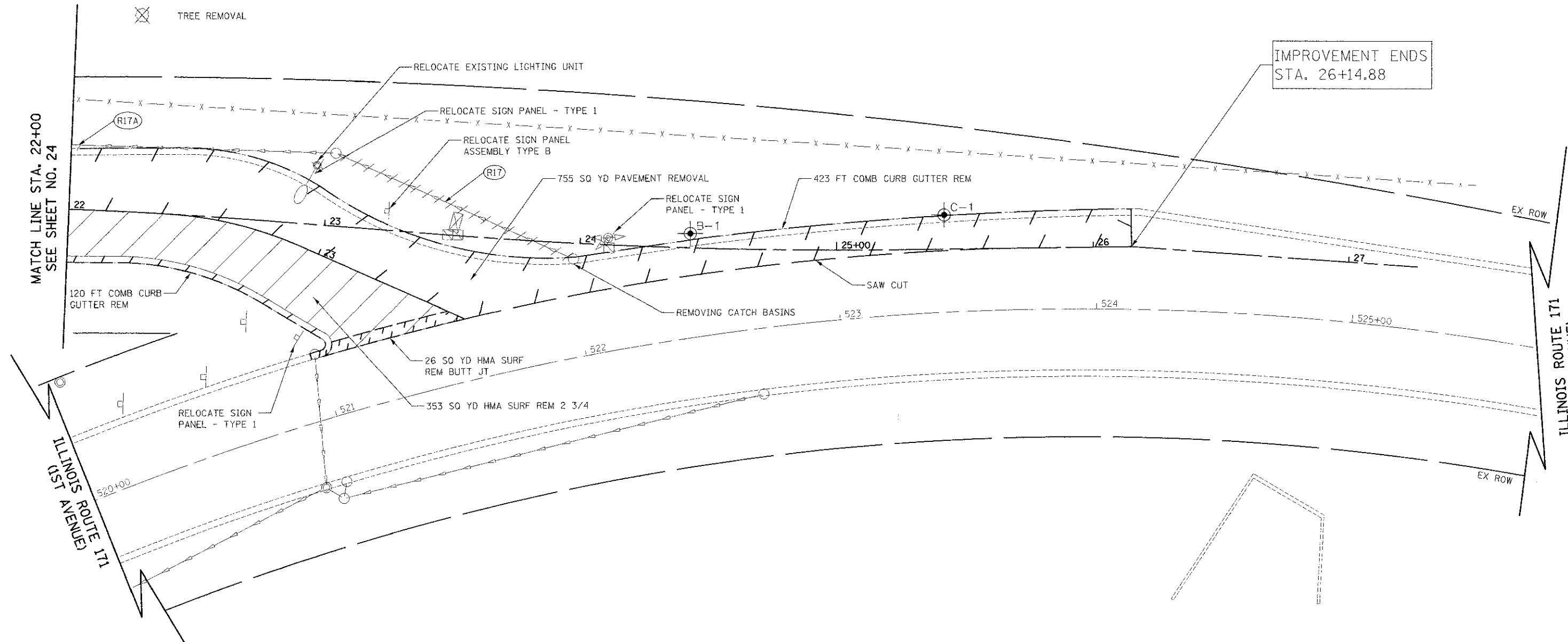
**REMOVAL LEGEND**

-  HMA SURFACE REMOVAL
-  REMOVAL LIMITS
-  PIPE TO BE REMOVED
-  TREE REMOVAL



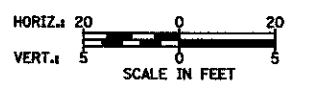
IMPROVEMENT ENDS  
STA. 26+14.88

MATCH LINE STA. 22+00  
SEE SHEET NO. 24



- (R17) 98' - STORM SEWER REM 12  
TBF = 0.0 CU YD
- (R17A) 12' - STORM SEWER REM 15  
TBF = 0.0 CU YD

GOLFVIEW AVENUE  
IL RTE 171



FILE NAME ... \87-Removals\2563_REM.dgn	USER NAME dte	DESIGNED DTE	REVISED	<b>STATE OF ILLINOIS DEPARTMENT OF TRANSPORTATION</b>	<b>REMOVAL PLAN</b>	F.A.I.D. RTE. 3784	SECTION 12-F3000-23-PK	COUNTY COOK	TOTAL SHEETS 133	SHEET NO. 24
PLOT SCALE = 20,000 / in. CHECKED - GAB DATE - 10/22/2012				SCALE: 1" = 20'   SHEET NO. 3 OF 6 SHEETS   STA. 22+00 TO STA. 26+15		CONTRACT NO. 63764 ILLINOIS FED. AID PROJECT				