

DATE	
BY	
REVISIONS	
PLANNED	
ALIGNED	
CHECKED	
NO. 1	
NO. 2	
NO. 3	
NO. 4	
NO. 5	
NO. 6	
NO. 7	
NO. 8	
NO. 9	
NO. 10	
NO. 11	
NO. 12	
NO. 13	
NO. 14	
NO. 15	
NO. 16	
NO. 17	
NO. 18	
NO. 19	
NO. 20	
NO. 21	
NO. 22	
NO. 23	
NO. 24	
NO. 25	
NO. 26	
NO. 27	
NO. 28	
NO. 29	
NO. 30	
NO. 31	
NO. 32	
NO. 33	
NO. 34	
NO. 35	
NO. 36	
NO. 37	
NO. 38	
NO. 39	
NO. 40	
NO. 41	
NO. 42	
NO. 43	
NO. 44	
NO. 45	
NO. 46	
NO. 47	
NO. 48	
NO. 49	
NO. 50	

DATE	
BY	
REVISIONS	
PLANNED	
ALIGNED	
CHECKED	
NO. 1	
NO. 2	
NO. 3	
NO. 4	
NO. 5	
NO. 6	
NO. 7	
NO. 8	
NO. 9	
NO. 10	
NO. 11	
NO. 12	
NO. 13	
NO. 14	
NO. 15	
NO. 16	
NO. 17	
NO. 18	
NO. 19	
NO. 20	
NO. 21	
NO. 22	
NO. 23	
NO. 24	
NO. 25	
NO. 26	
NO. 27	
NO. 28	
NO. 29	
NO. 30	
NO. 31	
NO. 32	
NO. 33	
NO. 34	
NO. 35	
NO. 36	
NO. 37	
NO. 38	
NO. 39	
NO. 40	
NO. 41	
NO. 42	
NO. 43	
NO. 44	
NO. 45	
NO. 46	
NO. 47	
NO. 48	
NO. 49	
NO. 50	

PROP. CURVE GOLFVIEW-2  
 PI STA. = 24+37.21  
 $\Delta = 5^\circ 28' 17''$  (LT)  
 $D = 3^\circ 00' 56''$   
 $R = 1,900.00'$   
 $T = 90.79'$   
 $L = 181.44'$   
 $E = 2.17'$   
 $e = \text{---}$   
 $T.R. = \text{---}$   
 $S.E. \text{ RUN} = \text{---}$   
 $P.C. \text{ STA} = 23+46.42$   
 $P.T. \text{ STA} = 25+27.86$



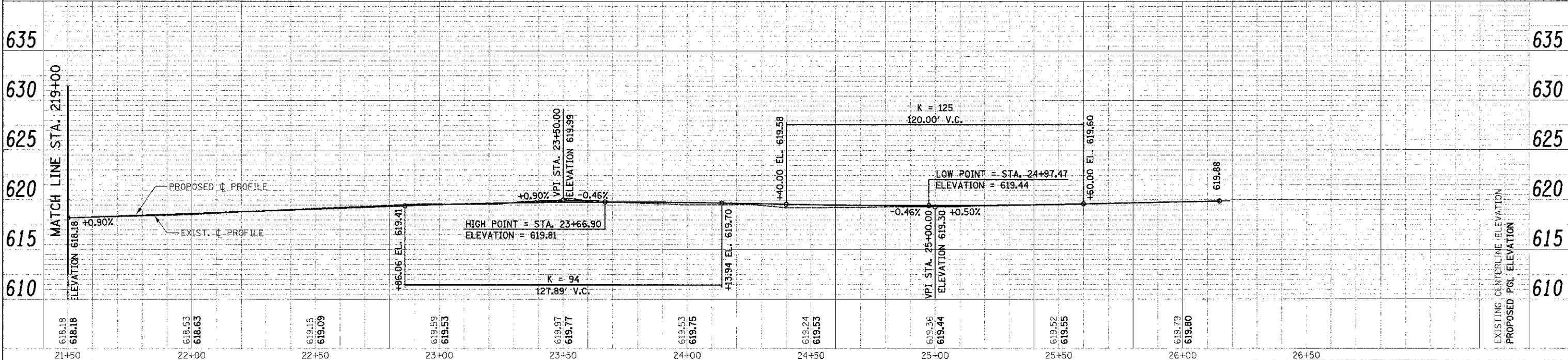
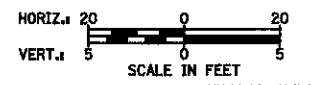
MATCH LINE STA. 21+50  
 SEE SHEET NO. 31

IMPROVEMENT ENDS  
 STA. 26+14.88

ILLINOIS ROUTE 171  
 (1ST AVENUE)

ILLINOIS ROUTE 171  
 (1ST AVENUE)

GOLFVIEW AVENUE



FILE NAME = ...2561_P&P_05.dgn	USER NAME = dte	DESIGNED - DTE	REVISED -	STATE OF ILLINOIS DEPARTMENT OF TRANSPORTATION	PLAN AND PROFILE	F.A.U. RTE. 3784	SECTION 12-F3000-23-PK	COUNTY COOK	TOTAL SHEET SHEETS NO. 33 32	CONTRACT NO. 63764
PLOT SCALE = 23.0000' / 1"	CHECKED - GAB	DATE - 10/22/2012	REVISED -	SCALE: 1" = 20'	SHEET NO. 5 OF 5 SHEETS	STA. 21+50 TO STA. 26+15	FED. ROAD DIST. NO. 1 ILLINOIS	FED. AID PROJECT		