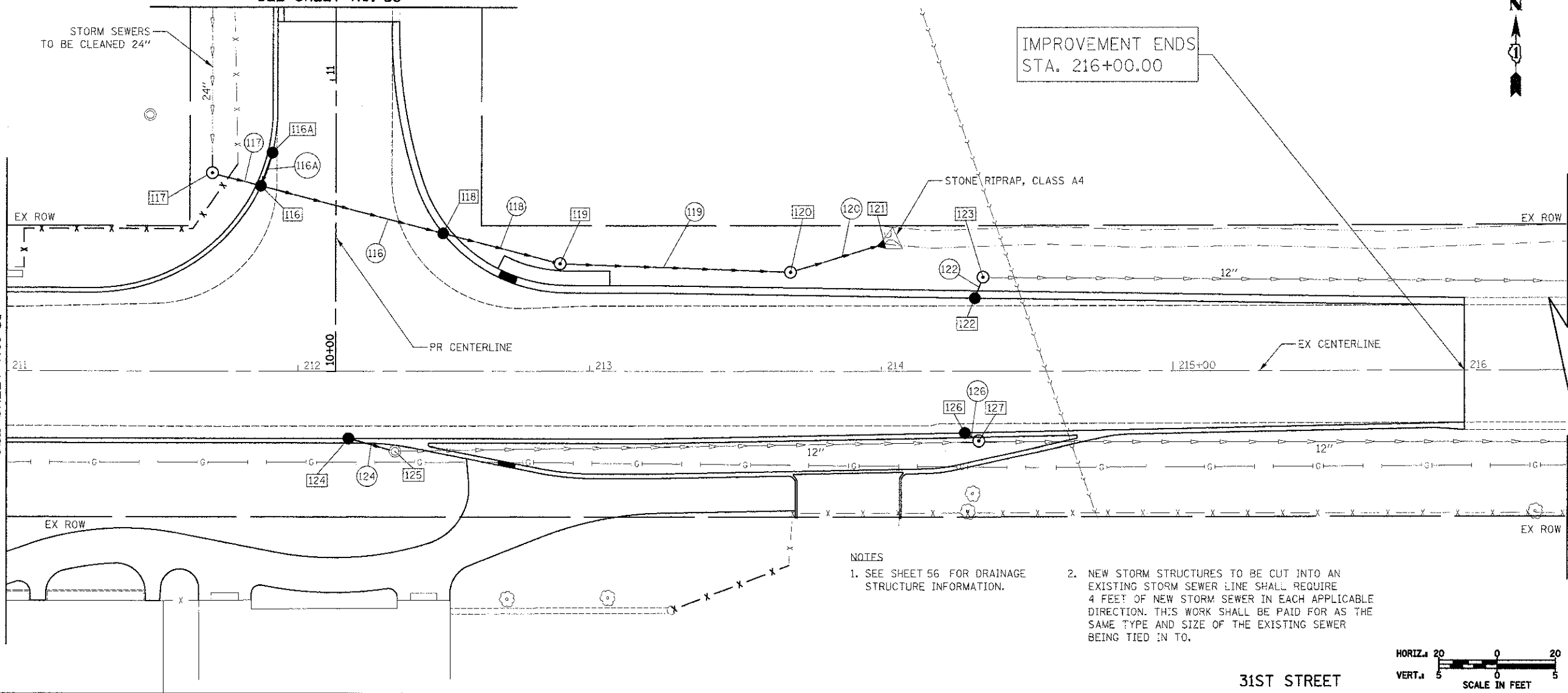


GOLFVIEW AVENUE
MATCH LINE STA. 11+25
SEE SHEET NO. 53

IMPROVEMENT ENDS
STA. 216+00.00

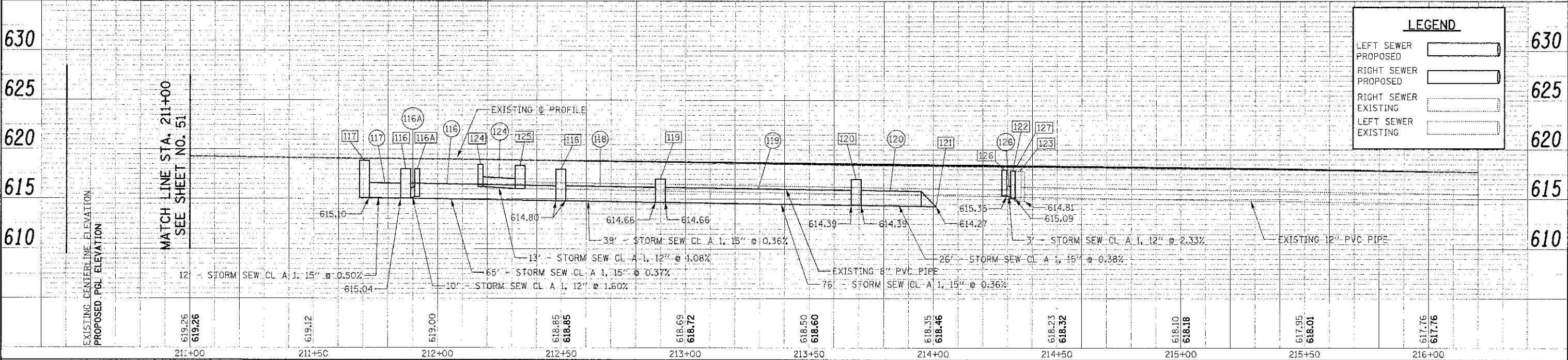
MATCH LINE STA. 211+00
SEE SHEET NO. 51



- NOTES
- SEE SHEET 56 FOR DRAINAGE STRUCTURE INFORMATION.
 - NEW STORM STRUCTURES TO BE CUT INTO AN EXISTING STORM SEWER LINE SHALL REQUIRE 4 FEET OF NEW STORM SEWER IN EACH APPLICABLE DIRECTION. THIS WORK SHALL BE PAID FOR AS THE SAME TYPE AND SIZE OF THE EXISTING SEWER BEING TIED IN TO.



31ST STREET



LEGEND	
LEFT SEWER PROPOSED	
RIGHT SEWER PROPOSED	
RIGHT SEWER EXISTING	
LEFT SEWER EXISTING	

PLAN	DESIGNED	DATE
NOTE BOOK	CHECKED	
	NO.	

PROFILE	DESIGNED	DATE
NOTE BOOK	CHECKED	
	NO.	

FILE NAME ...N2563_C&U_02.dgn	USER NAME dwe	DESIGNED - JES	REVISED -	STATE OF ILLINOIS DEPARTMENT OF TRANSPORTATION	DRAINAGE AND UTILITIES	F.A.U. RTE. 3784	SECTION 12-F3000-23-PK	COUNTY COOK	TOTAL SHEETS 133	SHEET NO. 52	CONTRACT NO. 63764
PLOT SCALE = 22.0000" / 1"				DATE 10/22/2012	SCALE: 1" = 20'	SHEET NO. 2 OF 6 SHEETS		STA. 211+00 TO STA. 216+00		FED. ROAD DIST. NO. 1 ILLINOIS	FED. AID PROJECT