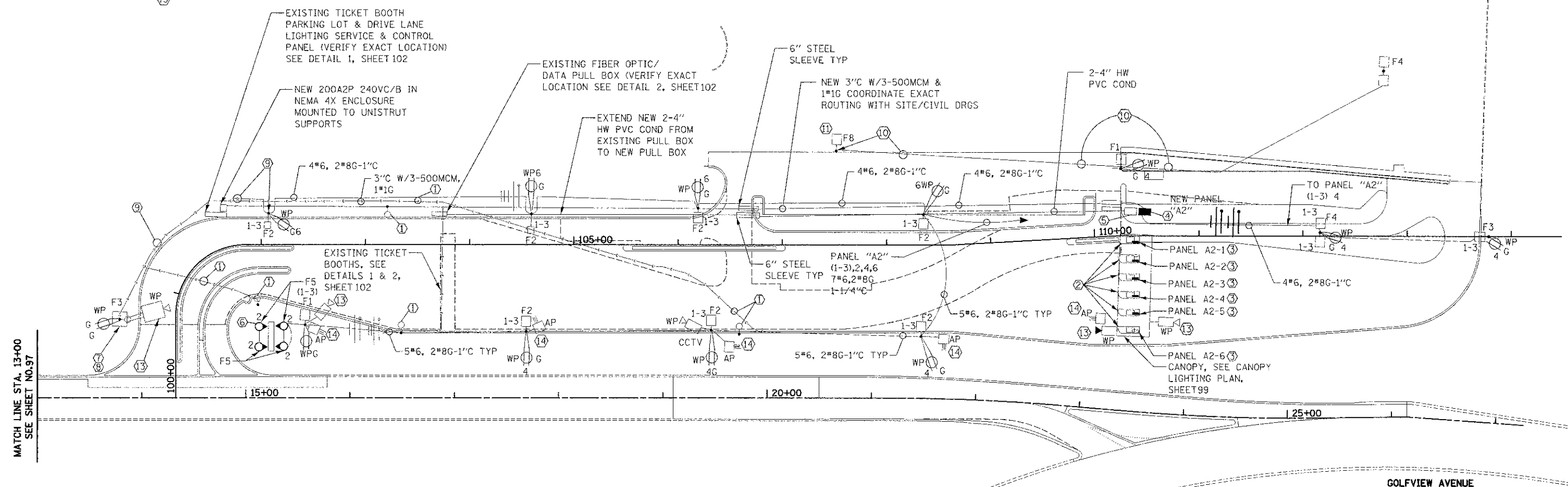
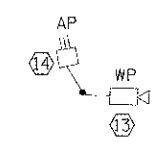
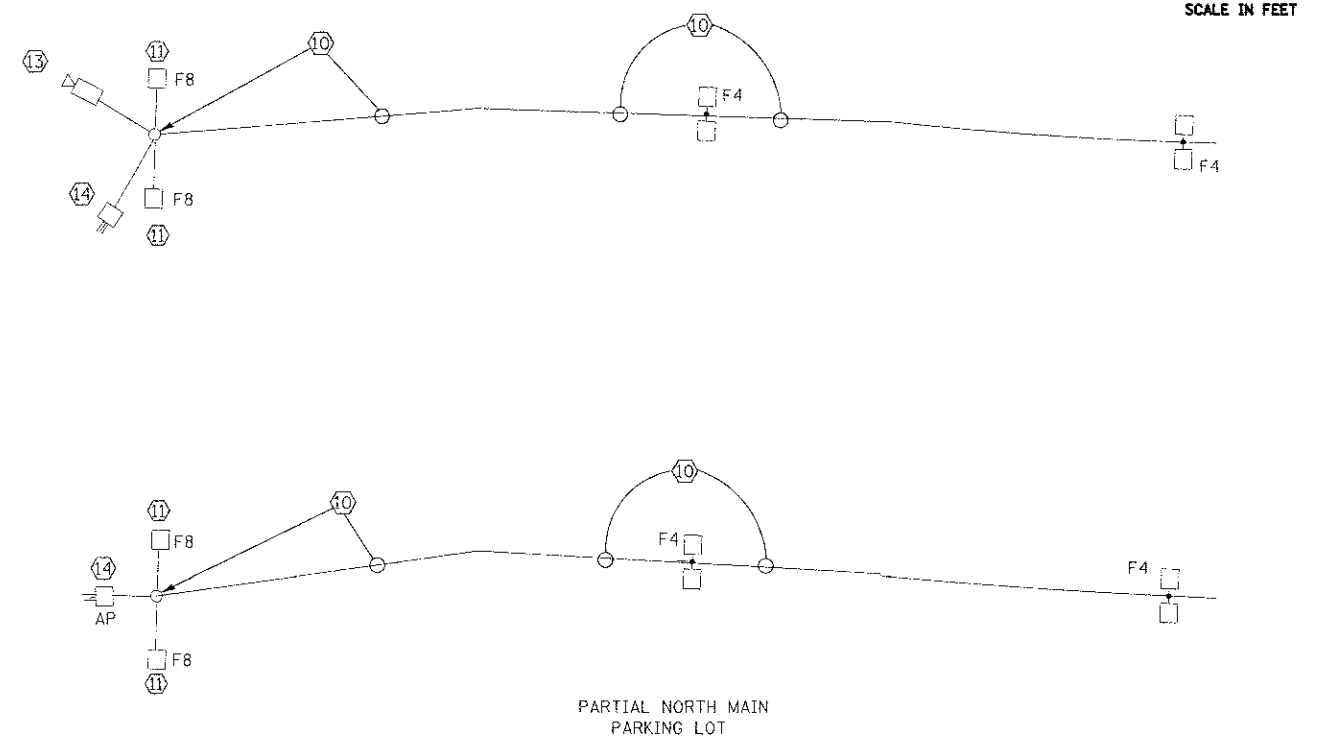
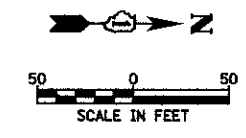


KEYED NOTES

- ① DISCONNECT & REMOVE EXISTING POLE, LIGHT FIXTURE, CAMERAS, ETC & REMOVE WIRE, CABLE TO SOURCE, THIS WORK SHALL BE PAID FOR AS "REMOVAL OF LIGHTING UNIT, NO SALVAGE" CONCRETE BASE REMOVAL SHALL BE PAID FOR AS "REMOVAL OF POLE FOUNDATION".
- ② PRE FAB KIOSK FURNISHED & MOUNTED BY OTHERS. SEE DRG. E1.2
- ③ 100A120/240V1Ø3W 18 CIRCUIT PANEL FURNISHED WITH KIOSK. EC SHALL BE RESPONSIBLE TO COORDINATE KIOSK SERVICE STUBUP LOCATION & MAKE FINAL CONNECTION TO PANEL.
- ④ NEW BOOTH SERVICE PANEL "A2" SEE NEW KIOSK ELECTRIC SERVICE DIAGRAM DRG. E2.0
- ⑤ NEW KIOSK FIBER OPTIC/DATA PULL BOX/DISTRIBUTION DIAGRAM DRG E2.0.
- ⑥ PROPOSED SIGN. VERIFY EXACT LOCATION WITH SIGN INSTALLER PRIOR TO ROUGH IN OF LIGHT FIXTURE F5
- ⑦ SAME AS FOR ITEM ① EXCEPT CONCRETE BASE & POLE TO REMAIN.
- ⑧ F&I NEW "F3" TYPE FIXTURE ON TO EXISTING POLE. PROVIDE MOUNTING BRACKET AS NECESSARY.
- ⑨ INTERCEPT EXISTING CONDUIT & EXTEND TO NEW "F2" FIXTURE. FURNISH & INSTALL NEW 4*6, 2*8GRD INTO EXISTING CONDUIT FROM NEW F2 FIXTURE TO NEW F3 FIXTURE ALSO SEE NOTE ⑧
- ⑩ INTERCEPT EXISTING LIGHT POLE FEEDER & EXTEND WIRE OF SAME AMPACITY IN NEW CONDUIT TO NEW PARKING LOT LIGHT FIXTURE.
- ⑪ DISCONNECT & REMOVE EXISTING LIGHT FIXTURE FROM EXISTING POLE & F&I NEW F8 LIGHT FIXTURE CONNECT TO EXISTING BRANCH CIRCUIT. PROVIDE MOUNTING BRACKET AS NECESSARY.
- ⑫ NOT USED
- ⑬ NEW IP SECURITY CAMERA MOUNTED TO LIGHT POLE AND/OR CANOPY VERIFY MTG HEIGHT WITH CZS.
- ⑭ WIRELESS ACCESS POINT (AP) MOUNTED TO LIGHT POLE AND/OR CANOPY VERIFY MTG HEIGHT WITH CZS.



MATCH LINE STA. 13+00
SEE SHEET NO.97

GOLFVIEW AVENUE

FILE NAME # ...sheet\Lighting\2563.E...1.dgn	USER NAME # dta	DESIGNED - DRAWN -	REVISED - REVISED - REVISED - REVISED -	STATE OF ILLINOIS DEPARTMENT OF TRANSPORTATION	ELECTRICAL SITE PLAN E1.0	F.A. RTE. 3784	SECTION 12-F3000-23-PK	COUNTY COOK	TOTAL SHEET SHEETS: NO. 133 98
PLOT SCALE: 1"=50'	PLOT DATE: 11/28/2012	CHECKED - DATE -	CONTRACT NO. 63764			FED. ROAD DIST. NO. ILLINOIS FED. AID PROJECT			