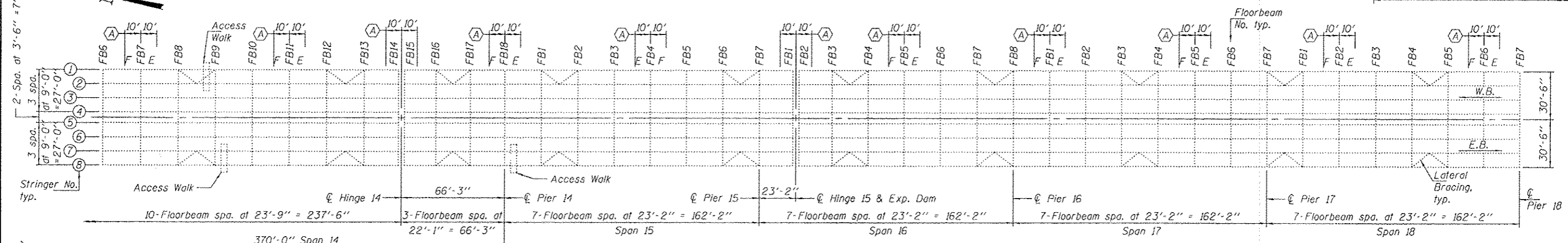
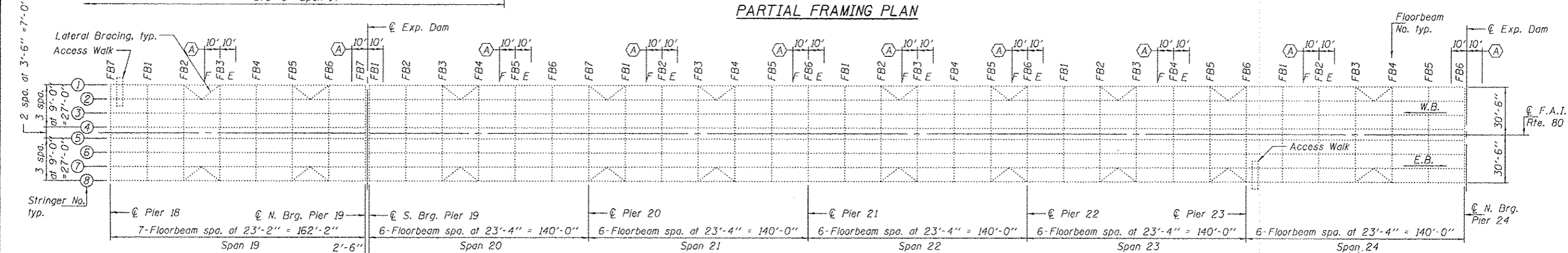


PARTIAL FRAMING PLAN



PARTIAL FRAMING PLAN



PARTIAL FRAMING PLAN

(A) - Clean & Paint Steel (10' each side of joint)

GENERAL NOTES

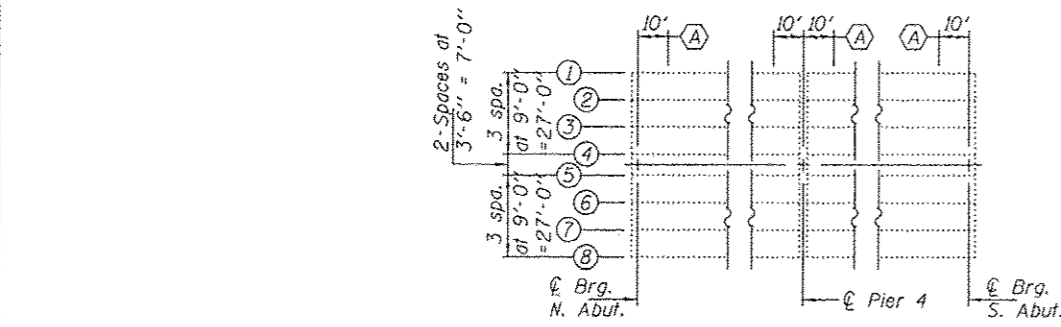
Cleaning and painting of the existing structural steel shall be as specified in the special provision for "Cleaning and Painting Existing Steel Structures". All beams, bearings and other structural steel within 10 ft. (measured along beam) of either side of deck joints shall be cleaned per Near White Blast Cleaning - SSPC-SP10. The exterior surfaces and bottom of the bottom flange of the fascia beams on Spans 1 thru 8, Spans 25 thru 28 and the two longitudinal plate girders on Spans 9 thru 24, shall be cleaned per Commercial Grade Power Tool Cleaning - SSPC-SP15.

The designated areas cleaned per Near White Blast Cleaning and per Commercial Grade Power Tool Cleaning shall be painted according to the requirements of Paint System 1 - OZ/E/U. The color of the final finish coat for all interior and exterior steel surfaces shall be Interstate Green, Munsell No. 7.5G 4/8.

Original existing Structural Steel details have been included in sheets 2 thru 22 of 42, to aid the contractor in estimating quantities. Also included in sheets 23 thru 42 of 42, are recent Structural Steel repair details. These recent repair areas are to be omitted from the areas to be cleaned and painted under this contract. However, at the discretion of the contractor to reduce cost where appropriate, areas of recently repaired steel that are limited in size may be included to be cleaned and painted.

A minimum of 4 air monitors will be required to monitor abrasive blasting operations at this site, see special provision for "Containment and Disposal of Lead Paint Cleaning Residues."

Note: Girders, lateral bracing between girders and inspection walkway not shown for clarity.



PARTIAL PLAN AT ABUTS. & PIER 4

TOTAL BILL OF MATERIAL

ITEM	UNIT	QUANTITY
Cleaning and Painting Steel Bridge	L.S.	1
Containment and Disposal of Lead Paint Cleaning Residuals	L.S.	1

DESIGNED - ATH  
 CHECKED - MKC  
 DRAWN - Kyle M. Steffon  
 CHECKED - ATH MKC

EXAMINED - *Timothy A. [Signature]*  
 ACTING ENGINEER OF STRUCTURAL SERVICES  
 PASSED - *[Signature]*  
 ACTING ENGINEER OF BRIDGES AND STRUCTURES

DATE - DECEMBER 11, 2012  
 REVISED - 01/07/2013 ATH  
 REVISED - 01/14/2013 ATH

STATE OF ILLINOIS  
 DEPARTMENT OF TRANSPORTATION

GENERAL PLAN & ELEVATION  
 I-80 OVER THE MISSISSIPPI RIVER  
 SN 081-0011  
 SHEET NO. 1 OF 42 SHEETS

F.A. RTE.	SECTION	COUNTY	TOTAL SHEETS	SHEET NO.
80	D2 BRIDGE PAINTING 2012-2	ROCK ISLAND	46	5
CONTRACT NO. 64H81			ILLINOIS FED. AID PROJECT	