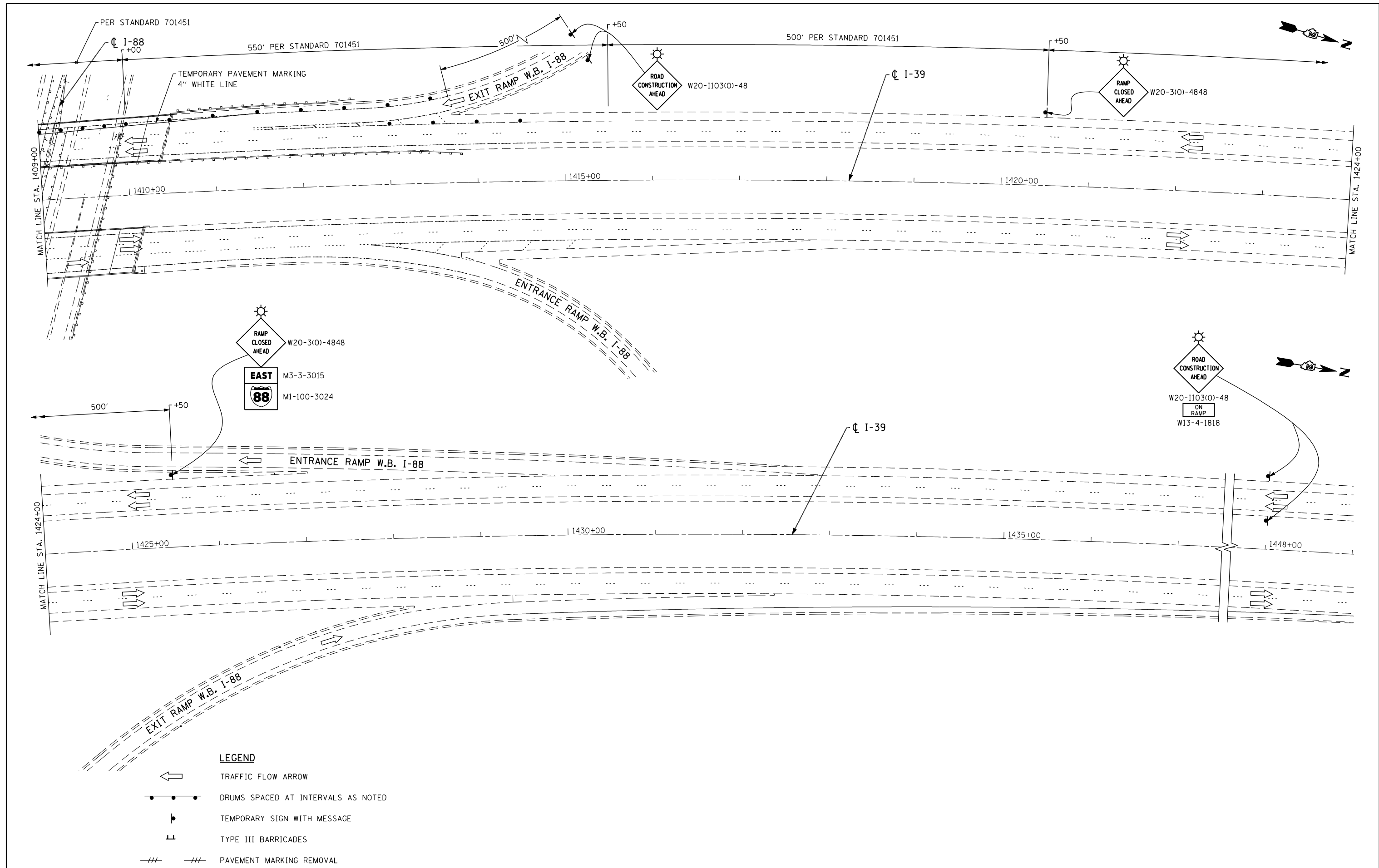


DATE	
BY	
FINAL SURVEY	
SURVEYED	
PLOTTED	
TEMPLATE	
NO. BOOK	
AREAS CHECKED	
NO.	

DATE	
BY	
ORIGINAL SURVEY	
SURVEYED	
PLOTTED	
TEMPLATE	
NO. BOOK	
AREAS CHECKED	
NO.	



- LEGEND**
- TRAFFIC FLOW ARROW
  - DRUMS SPACED AT INTERVALS AS NOTED
  - TEMPORARY SIGN WITH MESSAGE
  - TYPE III BARRICADES
  - PAVEMENT MARKING REMOVAL

FILE NAME = sht-stage4.02 I-39.dgn  
 PLOT DATE = 9/6/2012  
 PLOT SCALE = 100.0000' / IN.

**CHRISTIAN-ROGE & ASSOCIATES, INC.**  
 ENGINEERS-PLANNERS-SURVEYORS  
 211 WEST WACKER DRIVE  
 CHICAGO, ILLINOIS 60606  
 PHONE: (312)372-2023 FAX: (312)372-8274

DESIGNED	- E.M.	REVISED	-
DRAWN	- B.K.	REVISED	-
CHECKED	- G.F.L.	REVISED	-
DATE	- JULY 2012	REVISED	-

**STATE OF ILLINOIS  
 DEPARTMENT OF TRANSPORTATION**

<b>TRAFFIC CONTROL AND PROTECTION</b>			
<b>STAGE IV</b>			
<b>I-39 OVER I-88</b>			
SCALE:	SHEET NO.	OF SHEETS	STA. TO STA.

F.A.I. RTE.	SECTION	COUNTY	TOTAL SHEETS	SHEET NO.
39	D2 BRIDGE PAINTING 2013-2	OGLE	26	15
FED. ROAD DIST. NO. 1 ILLINOIS FED. AID PROJECT				CONTRACT NO. 64J27