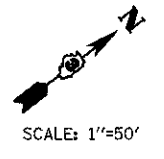
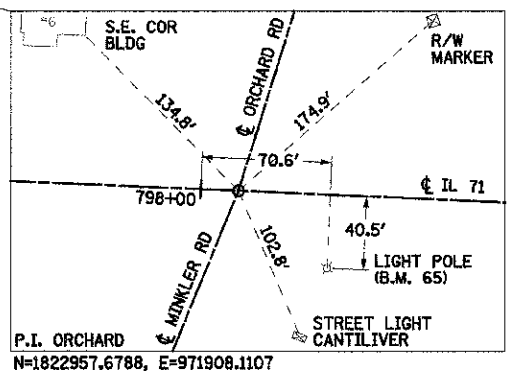
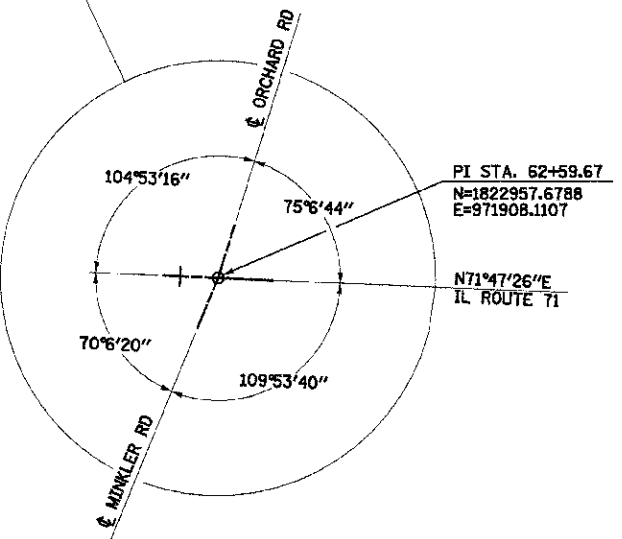
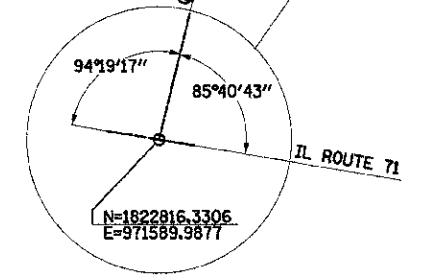
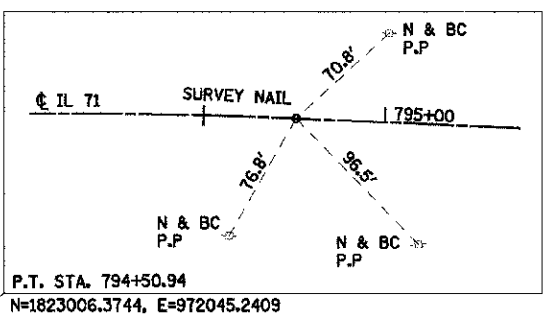
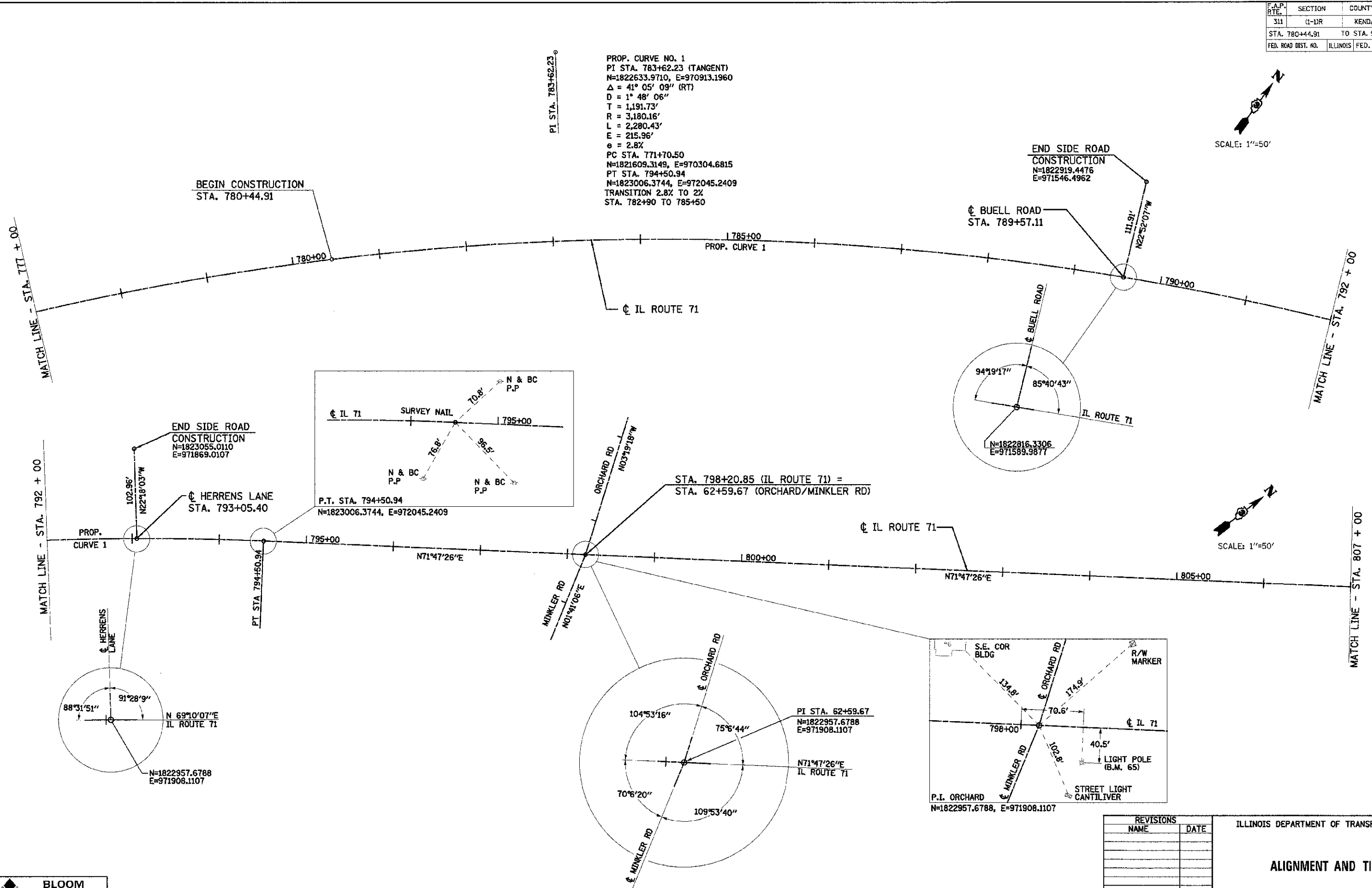
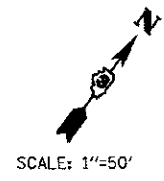


F.A.P. RTE.	SECTION	COUNTY	TOTAL SHEETS	SHEET NO.
311	(1-1R)	KENDALL	514	77
STA. 780+44.91 TO STA. 918+85.88				
FED. ROAD DIST. NO.			ILLINOIS FED. AID PROJECT	

PROP. CURVE NO. 1
 PI STA. 783+62.23 (TANGENT)
 N=1822633.9710, E=970913.1960
 $\Delta = 41^\circ 05' 09''$ (RT)
 $D = 1^\circ 48' 06''$
 $T = 1,191.73'$
 $R = 3,180.16'$
 $L = 2,280.43'$
 $E = 215.96'$
 $e = 2.8\%$
 PC STA. 771+70.50
 N=1821609.3149, E=970304.6815
 PT STA. 794+50.94
 N=1823006.3744, E=972045.2409
 TRANSITION 2.8% TO 2%
 STA. 782+90 TO 785+50



TUG PROJ. *310584
 PLOT DATE = 7/9/2012
 FILE NAME = F:\BMS-1108 11 71 Drawings\LCAD\DCS\Name\B1108_11 T 2.dgn

BLOOM COMPANIES, LLC
 Infrastructure Division and Engineering
 800 W. Alton Street, Suite 701 • Chicago, IL 60661
 Phone: (312) 678-9609 Fax: (312) 678-9600

REVISIONS	
NAME	DATE

ILLINOIS DEPARTMENT OF TRANSPORTATION

ALIGNMENT AND TIES

SCALE: VERT. 1"=50'
 HORIZ. 1"= 50'
 DATE 07/06/2012

DRAWN BY WS/KD
 CHECKED BY JAP/DJB