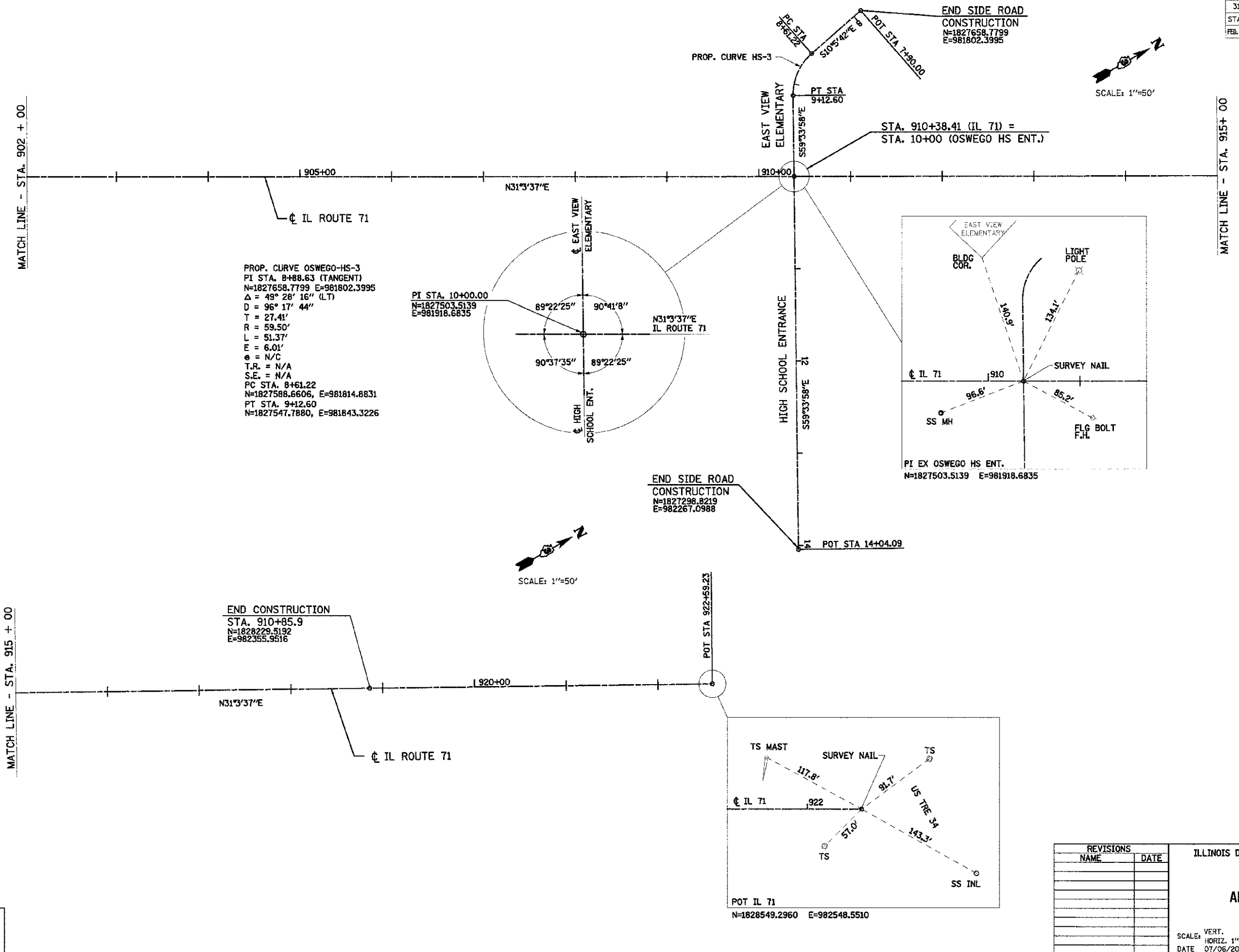
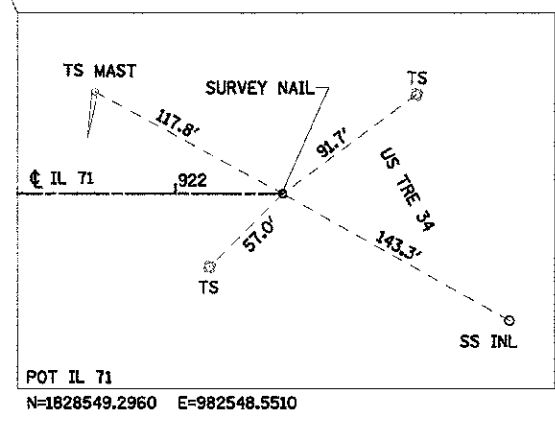
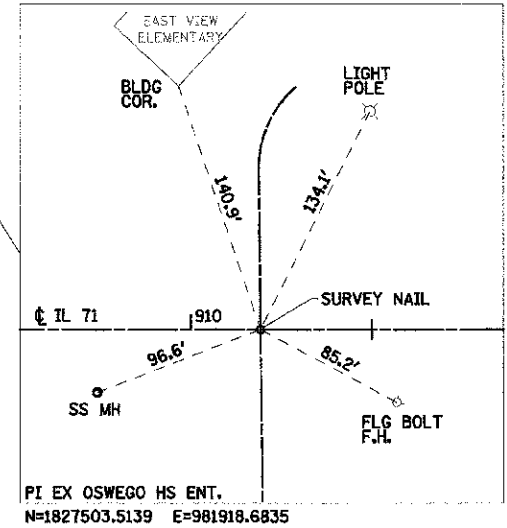
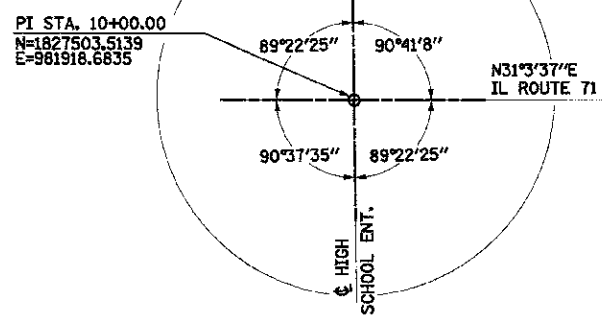


| F.A.P. RTE.                      | SECTION | COUNTY  | TOTAL SHEETS              | SHEET NO. |
|----------------------------------|---------|---------|---------------------------|-----------|
| 311                              | (1-1)R  | KENDALL | 514                       | 81        |
| STA. 780+44.91 TO STA. 918+85.88 |         |         |                           |           |
| FED. ROAD DIST. NO.              |         |         | ILLINOIS FED. AID PROJECT |           |



PROP. CURVE OSWEGO-HS-3  
 PI STA. 8+88.63 (TANGENT)  
 N=1827658.7799 E=981802.3995  
 $\Delta = 49^\circ 28' 16''$  (LT)  
 D = 96' 17' 44"  
 T = 27.41'  
 R = 59.50'  
 L = 51.37'  
 E = 6.01'  
 e = N/C  
 T.R. = N/A  
 S.E. = N/A  
 PC STA. 8+61.22  
 N=1827588.6606, E=981814.8831  
 PT STA. 9+12.60  
 N=1827547.7880, E=981843.3226



SCALE: 1"=50'

SCALE: 1"=50'

| REVISIONS |      |
|-----------|------|
| NAME      | DATE |
|           |      |
|           |      |
|           |      |
|           |      |
|           |      |
|           |      |
|           |      |
|           |      |
|           |      |
|           |      |

ILLINOIS DEPARTMENT OF TRANSPORTATION

**ALIGNMENT AND TIES**

SCALE: VERT. 1"=50'  
 HORIZ. 1"=50'

DATE 07/06/2012

DRAWN BY WS/KD  
 CHECKED BY JAP/DJB

TUG PROJ. #318944  
 PLOT DATE = 7/9/2012  
 FILE NAME = F:\1189-1189 11 71 Oswego\1189-1189.dwg

**BLOOM COMPANIES, LLC**  
 Infrastructure. Innovation. Integrity.  
 935 W. Fulton Street, Suite 701 • Chicago, IL 60607  
 Phone: (312) 876-8930 Fax: (312) 278-0030