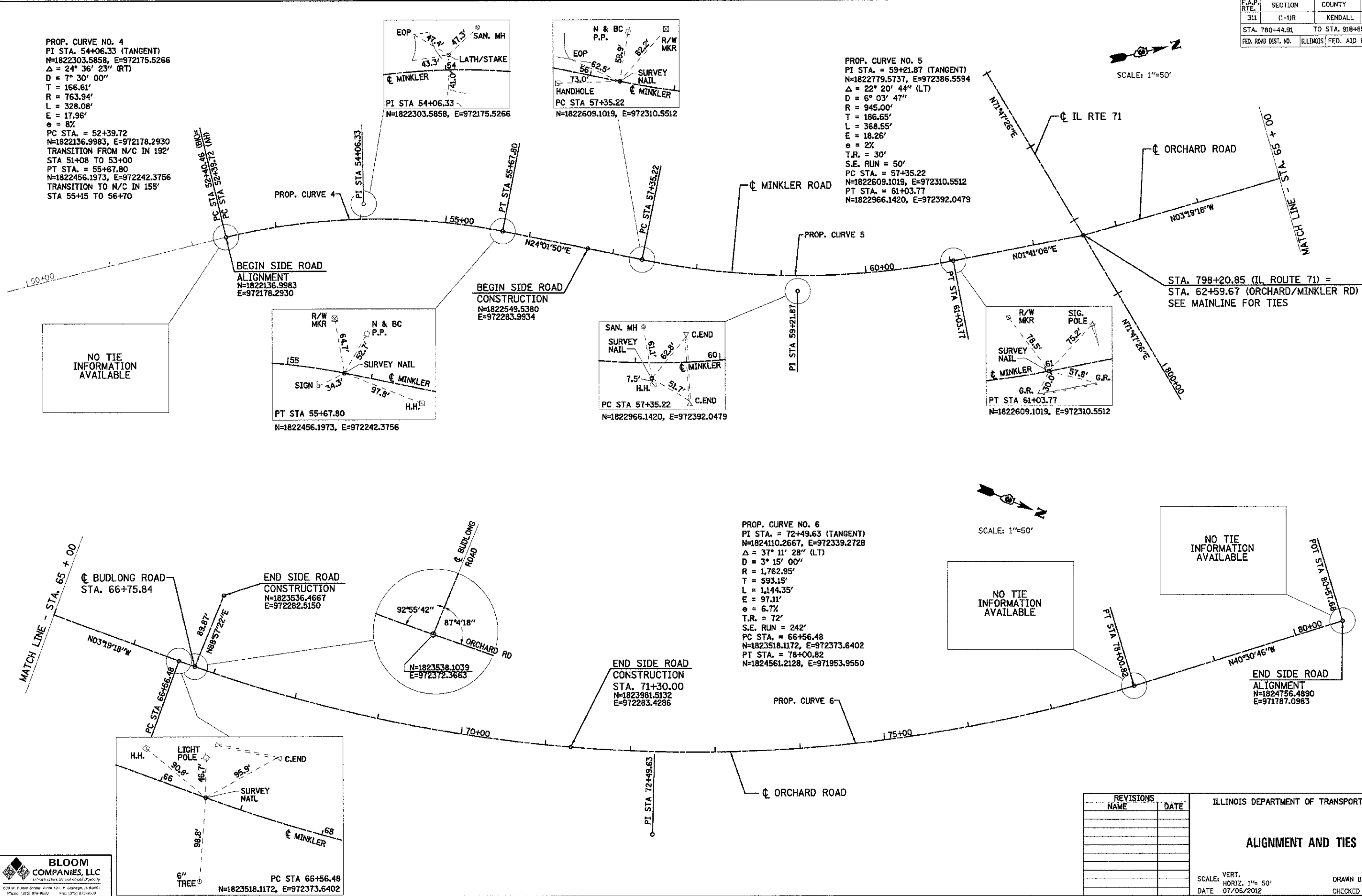
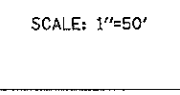
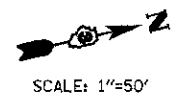


F.A.P. RTE.	SECTION	COUNTY	TOTAL SHEETS	SHEET NO.
311	(1-1R)	KENDALL	514	82
STA. 780+44.91 TO STA. 918+85.88				
FED. ROAD DIST. NO. ILLINOIS FED. AID PROJECT				

PROP. CURVE NO. 4
 PI STA. 54+06.33 (TANGENT)
 N=1822303.5858, E=972175.5266
 $\Delta = 24^\circ 36' 23''$ (RT)
 D = $7^\circ 30' 00''$
 T = 166.61'
 R = 763.94'
 L = 328.08'
 E = 17.96'
 $e = 8\%$
 PC STA. = 52+39.72
 N=1822136.9983, E=972178.2930
 TRANSITION FROM N/C IN 192'
 STA 51+08 TO 53+00
 PT STA. = 55+67.80
 N=1822456.1973, E=972242.3756
 TRANSITION TO N/C IN 155'
 STA 55+15 TO 56+70

PROP. CURVE NO. 5
 PI STA. = 59+21.87 (TANGENT)
 N=1822779.5737, E=972386.5594
 $\Delta = 22^\circ 20' 44''$ (LT)
 D = $6^\circ 03' 47''$
 R = 945.00'
 T = 186.65'
 L = 368.55'
 E = 18.26'
 $e = 2\%$
 T.R. = 30'
 S.E. RUN = 50'
 PC STA. = 57+35.22
 N=1822609.1019, E=972310.5512
 PT STA. = 61+03.77
 N=1822966.1420, E=972392.0479

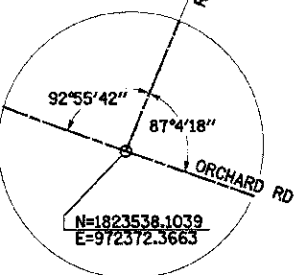
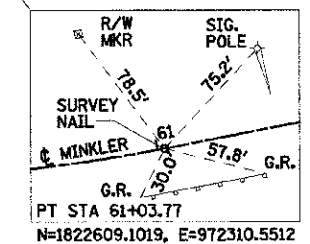
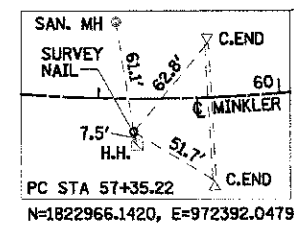
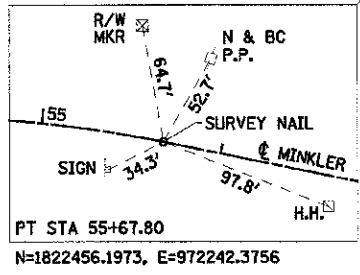
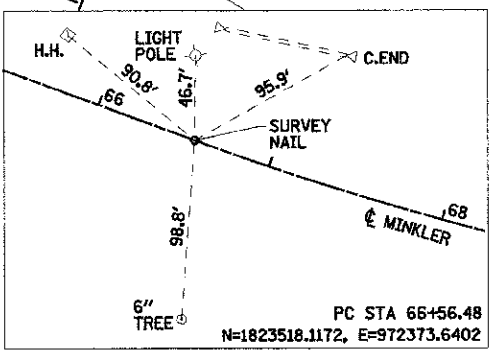
PROP. CURVE NO. 6
 PI STA. = 72+49.63 (TANGENT)
 N=1824110.2667, E=972339.2728
 $\Delta = 37^\circ 11' 28''$ (LT)
 D = $3^\circ 15' 00''$
 R = 1,762.95'
 T = 593.15'
 L = 1,144.35'
 E = 97.11'
 $e = 6.7\%$
 T.R. = 72'
 S.E. RUN = 242'
 PC STA. = 66+56.48
 N=1823518.1172, E=972373.6402
 PT STA. = 78+00.82
 N=1824561.2128, E=971953.9550



NO TIE INFORMATION AVAILABLE

NO TIE INFORMATION AVAILABLE

NO TIE INFORMATION AVAILABLE



REVISIONS	
NAME	DATE

ILLINOIS DEPARTMENT OF TRANSPORTATION

ALIGNMENT AND TIES

SCALE: VERT. 1"=50'
 HORIZ. 1"=50'
 DATE 07/06/2012

DRAWN BY WS/KD
 CHECKED BY JAP/DJB

TUG PROJ. #1010004
 PLOT DATE = 7/9/2012
 FILE NAME = F:\3100\10100 11 71\Drawings\LD\RD\CD\66420\10100_11_71.dgn

BLOOM COMPANIES, LLC
 Infrastructure Development and Engineering
 600 W. Fulton Street, Suite 721 • Chicago, IL 60661
 Phone: (312) 878-8500 Fax: (312) 878-8600