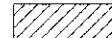
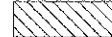
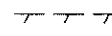


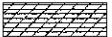
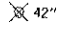
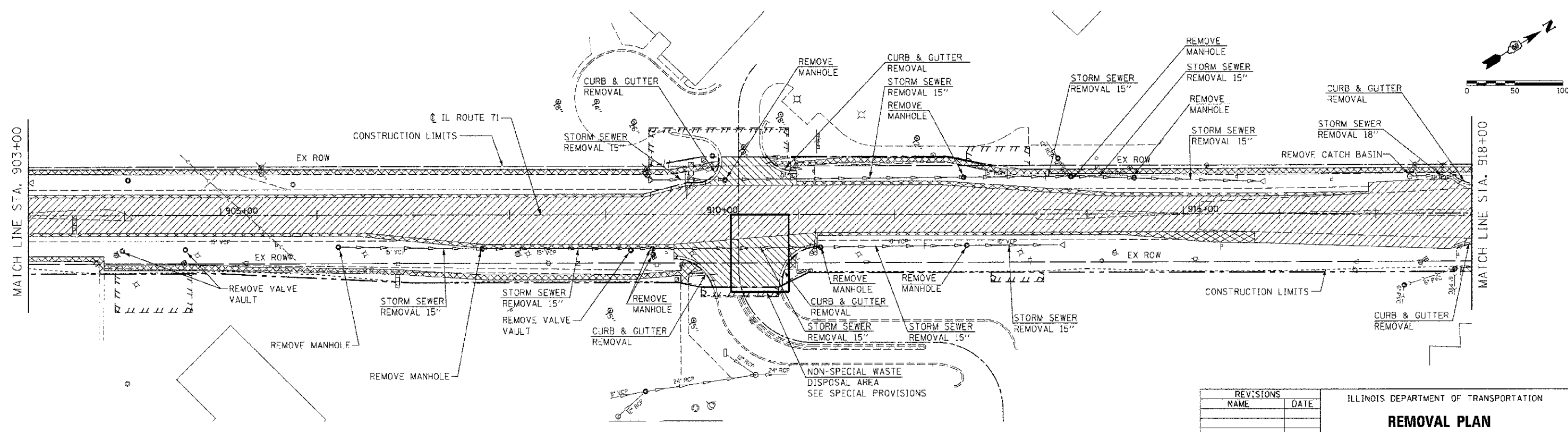
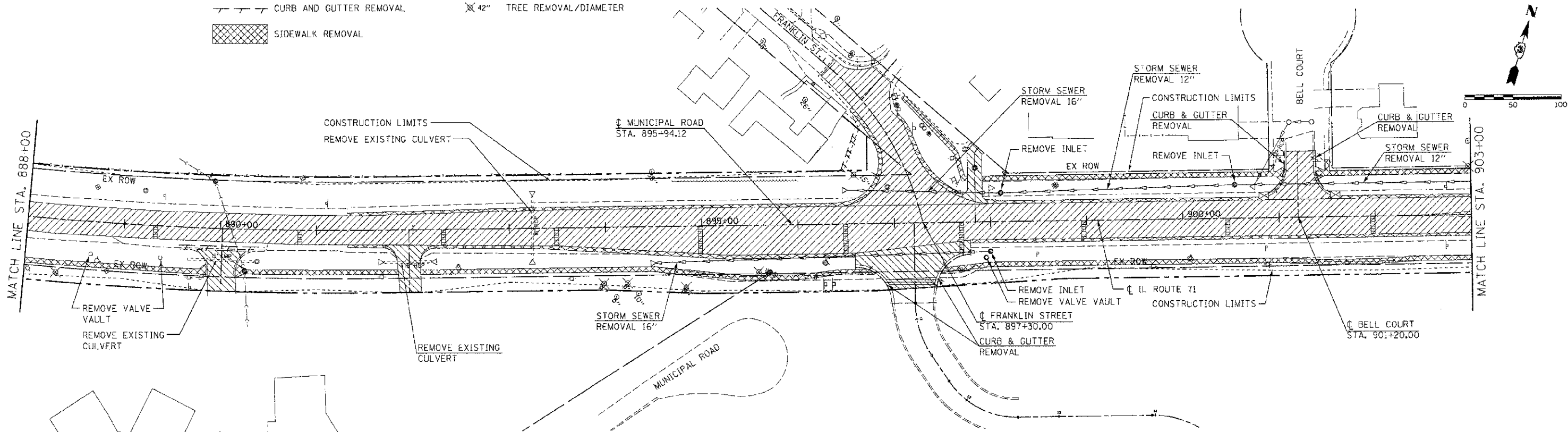


F.A.P. RTE.	SECTION	COUNTY	TOTAL SHEETS	SHEET NO.
311	11-11R	KENDALL	514	89
STA. 888+00		TO STA. 918+00		
FED. ROAD DIST. NO.		ILLINOIS FED. AID PROJECT		

-  PAVEMENT REMOVAL
-  DRIVEWAY PAVEMENT REMOVAL
-  CURB AND GUTTER REMOVAL
-  SIDEWALK REMOVAL
-  PAVED SHOULDER REMOVAL
-  CLASS D PATCH
-  42" TREE REMOVAL/DIAMETER



REVISIONS	
NAME	DATE

ILLINOIS DEPARTMENT OF TRANSPORTATION

**REMOVAL PLAN**

**IL RTE 71**

**STA. 888 + 00 TO STA. 918 + 00**

SCALE: VERT. 1"=50'  
 HORZ. 1"=50'

DATE: 7/5/2012

DRAWN BY: TRG  
 CHECKED BY: MED

TUG PROJ: 3105914  
 PLOT DATE: 7/5/2012  
 FILE NAME: p:\activ1\ldot\_0513\oswego\phase 11\SEM-89-01.dgn