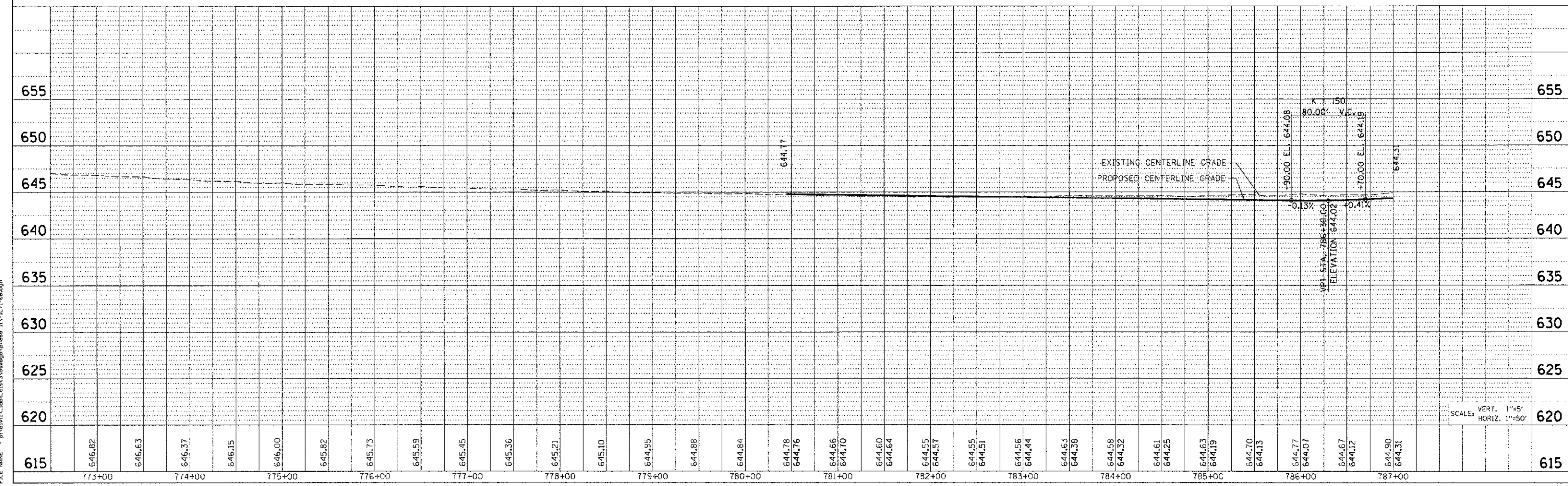
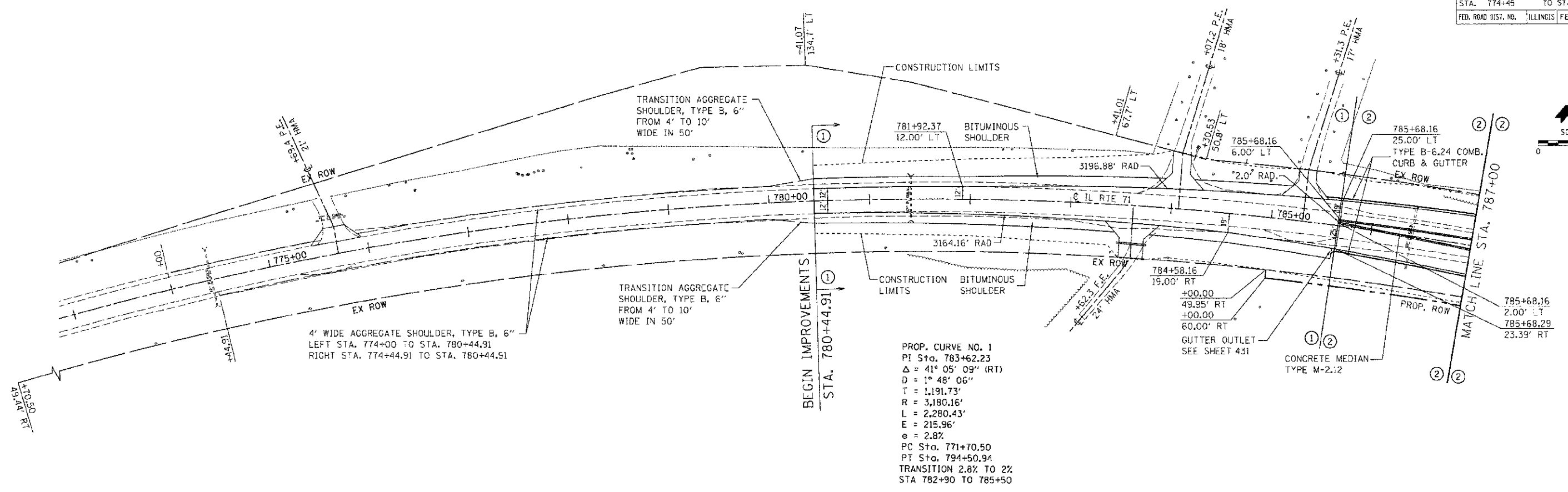
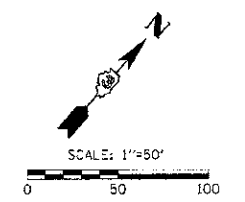


F.A.P. RTE.	SECTION	COUNTY	TOTAL SHEETS	SHEET NO.
311	(1-1)R	KENDALL	514	94
STA. 774+45		TO STA. 787+00		
FED. ROAD DIST. NO.		ILLINOIS FED. AID PROJECT		



PLOT DATE: 7/25/2012
 FILE NAME: p:\asv\11_108\11_108\phase 11\PL171-09.dgn