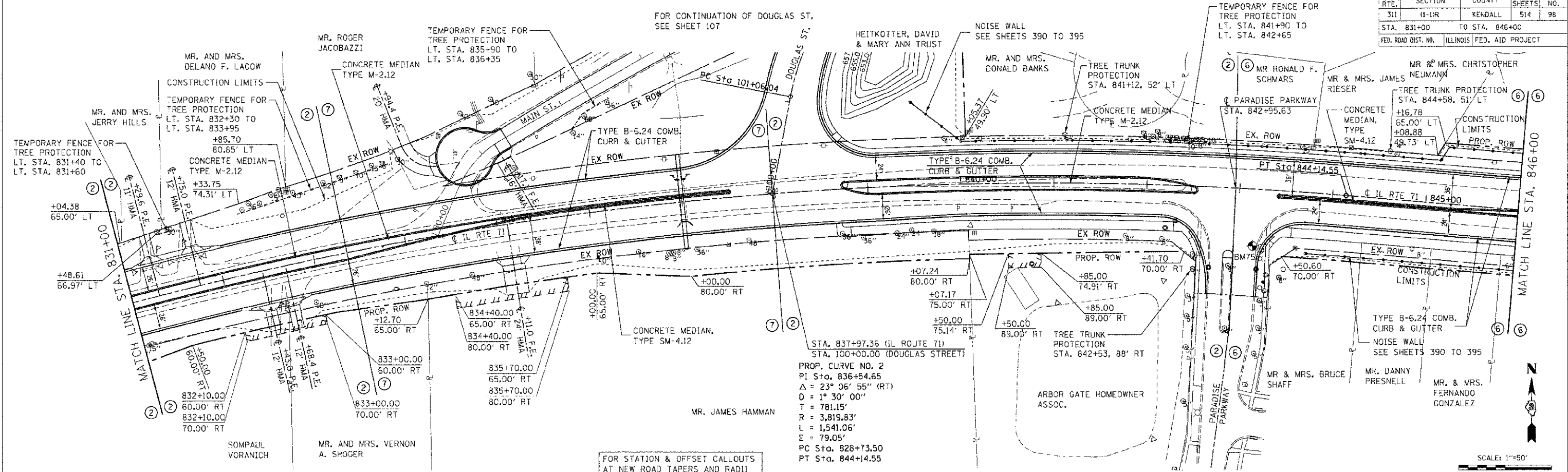
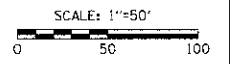


F.A.P. RTE.	SECTION	COUNTY	TOTAL SHEETS	SHEET NO.
311	(1-1R)	KENDALL	514	98
STA. 831+00		TO STA. 846+00		
FED. ROAD DIST. NO.		ILLINOIS FED. AID PROJECT		

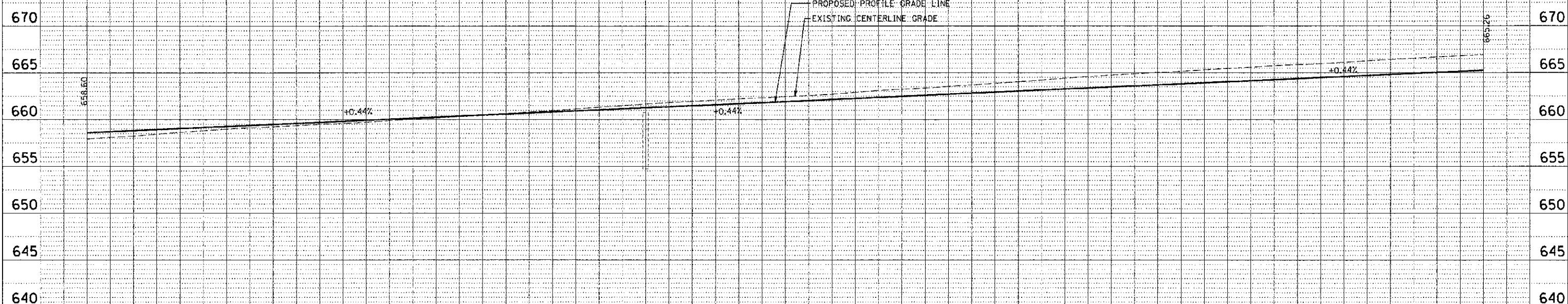


PROP. CURVE NO. 2
 PI Sta. 836+54.65
 $\Delta = 23^\circ 06' 55''$ (RT)
 $D = 1^\circ 30' 00''$
 $T = 781.15'$
 $R = 3,819.83'$
 $L = 1,541.06'$
 $E = 79.05'$
 PC Sta. 828+73.50
 PT Sta. 844+14.55

FOR STATION & OFFSET CALLOUTS AT NEW ROAD TAPERS AND RADII SEE INTERSECTION DETAIL SHEETS 330 TO 333



STATION	OFFSET	BENCHMARK	DESCRIPTION	ELEVATION	STATION	OFFSET
831+00	65.00' LT	BM75	CHIS (X) TOP NE. BOLT OF F.H. SE QUAD. OF IL. 71 & PARADISE PKWY	664.823	843+26	65' RT
831+00	65.00' LT					
832+00	65.00' LT					
833+00	65.00' LT					
834+00	65.00' LT					
835+00	65.00' LT					
836+00	65.00' LT					
837+00	65.00' LT					
838+00	65.00' LT					
839+00	65.00' LT					
840+00	65.00' LT					
841+00	65.00' LT					
842+00	65.00' LT					
843+00	65.00' LT					
844+00	65.00' LT					
845+00	65.00' LT					
846+00	65.00' LT					



SCALE: VERT. 1"=5'
 HORZ. 1"=50'

TUC PROJ: 3102014
 PLOT: 0111 4/15/2012
 FILE NAME: p:\proj\1111\dsc-df\3102014\p1111-01.dgn