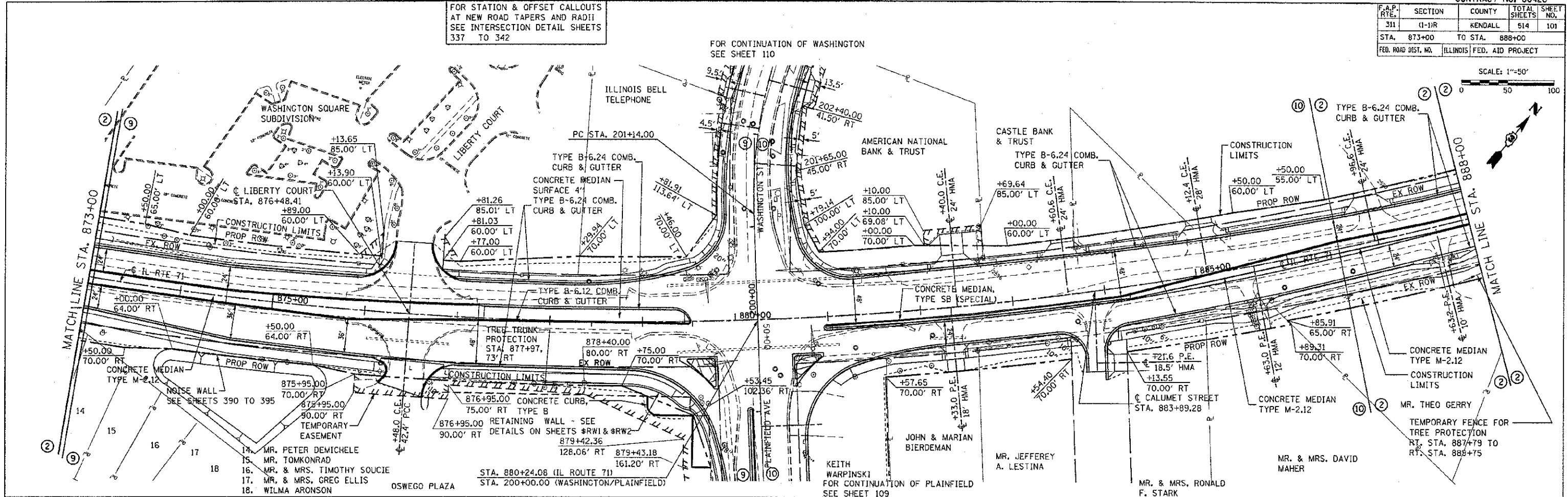


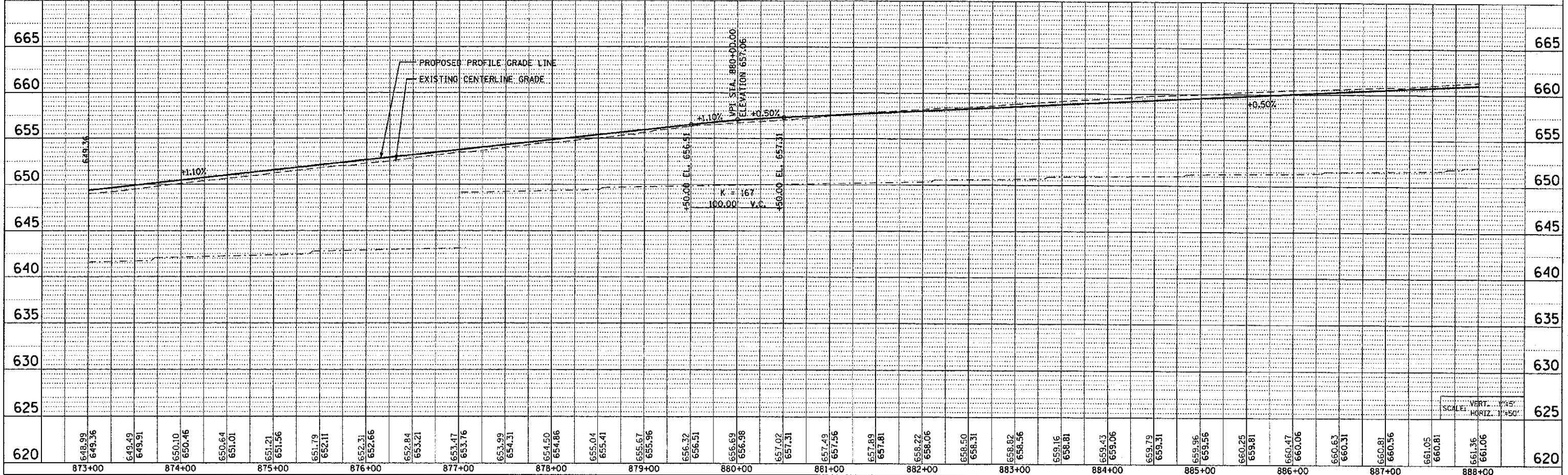
F.A.P. RTE.	SECTION	COUNTY	TOTAL SHEETS	SHEET NO.
311	11-11R	KENDALL	514	101
STA. 873+00		TO STA. 888+00		
FED. ROAD DIST. NO.		ILLINOIS		FED. AID PROJECT

FOR STATION & OFFSET CALLOUTS AT NEW ROAD TAPERS AND RADII SEE INTERSECTION DETAIL SHEETS 337 TO 342

FOR CONTINUATION OF WASHINGTON SEE SHEET 110



SCALE: 1"=50'



THE UPCHURCH GROUP, INC., 123 NORTH 15TH STREET, MATTOON, ILLINOIS 61938, (217) 235-3177  
 PLOT DATE = 8/19/2012  
 FILE NAME = c:\pwworkspace\11111111\11111111.dwg