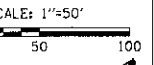
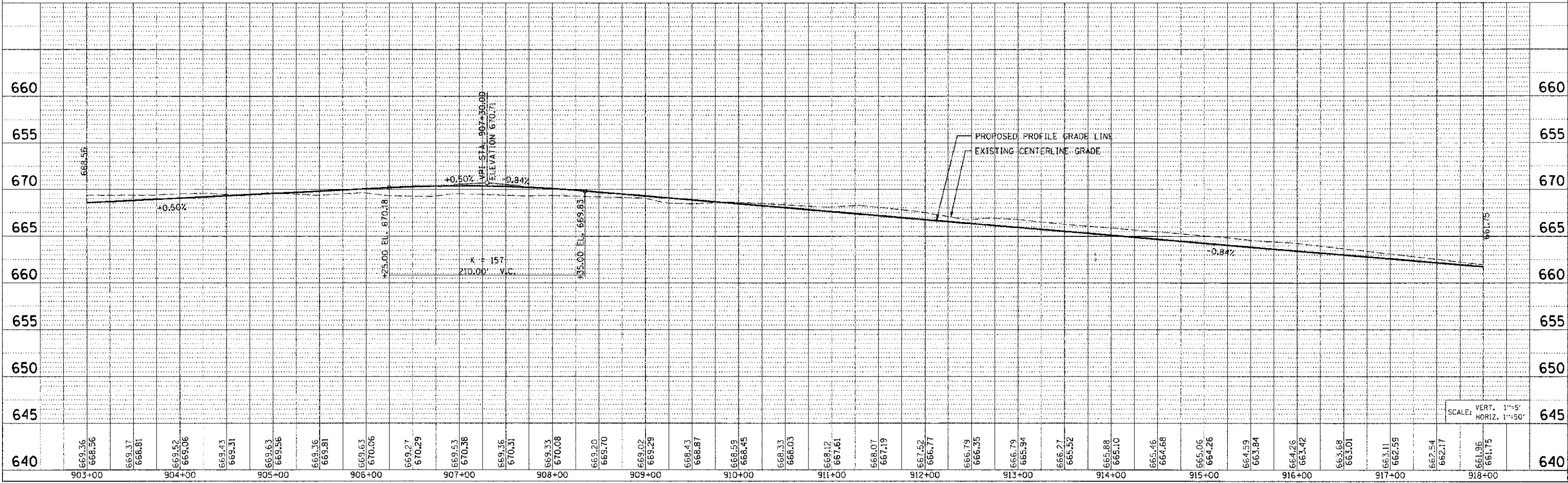
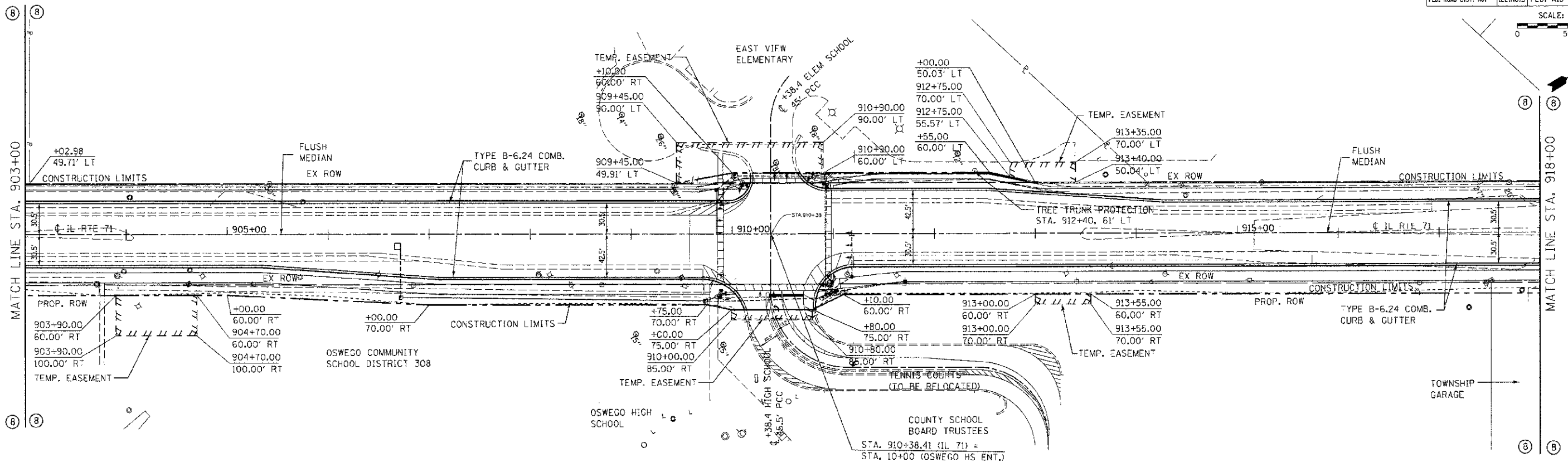


F.A.P. RTE.	SECTION	COUNTY	TOTAL SHEETS	SHEET NO.
311	(1-1R)	KENDALL	514	103
STA. 903+00		TO STA. 918+00		
FED. ROAD DIST. NO.		ILLINOIS FED. AID PROJECT		



FOR STATION & OFFSET CALLOUTS
AT NEW ROAD TAPERS AND RADII
SEE INTERSECTION DETAIL SHEETS
344 TO 345



TUG PROJ: 6302204
 PLOT DATE: 7/15/2012
 FILE NAME: p:\enviro\1\det.dwg\unwego\plans\1\PL17-09.dwg