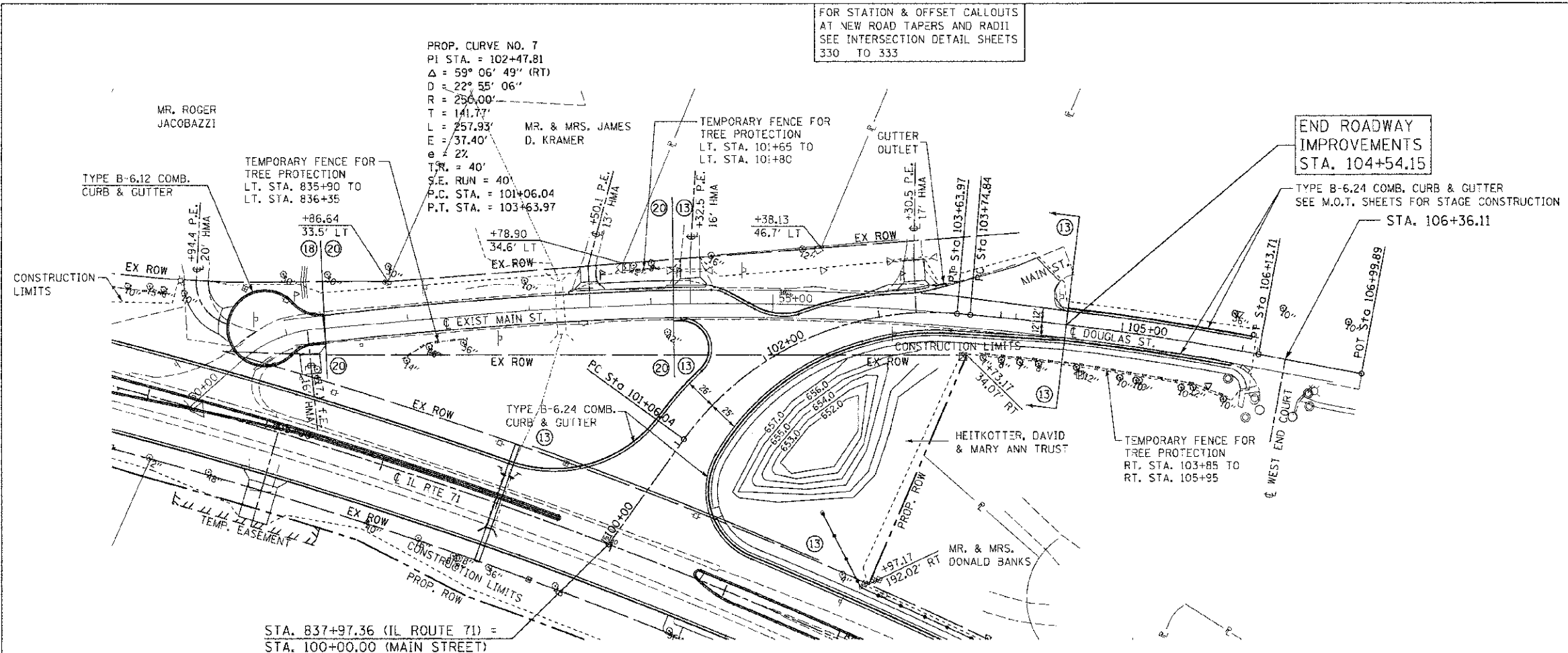
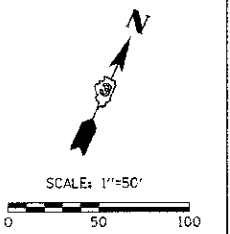


F.A.P. RTE.	SECTION	COUNTY	TOTAL SHEETS	SHEET NO.
311	11-11R	KENDALL	514	107
STA. 100+00		TO STA. 106+99.89		
FED. ROAD DIST. NO. ILLINOIS FED. AID PROJECT				

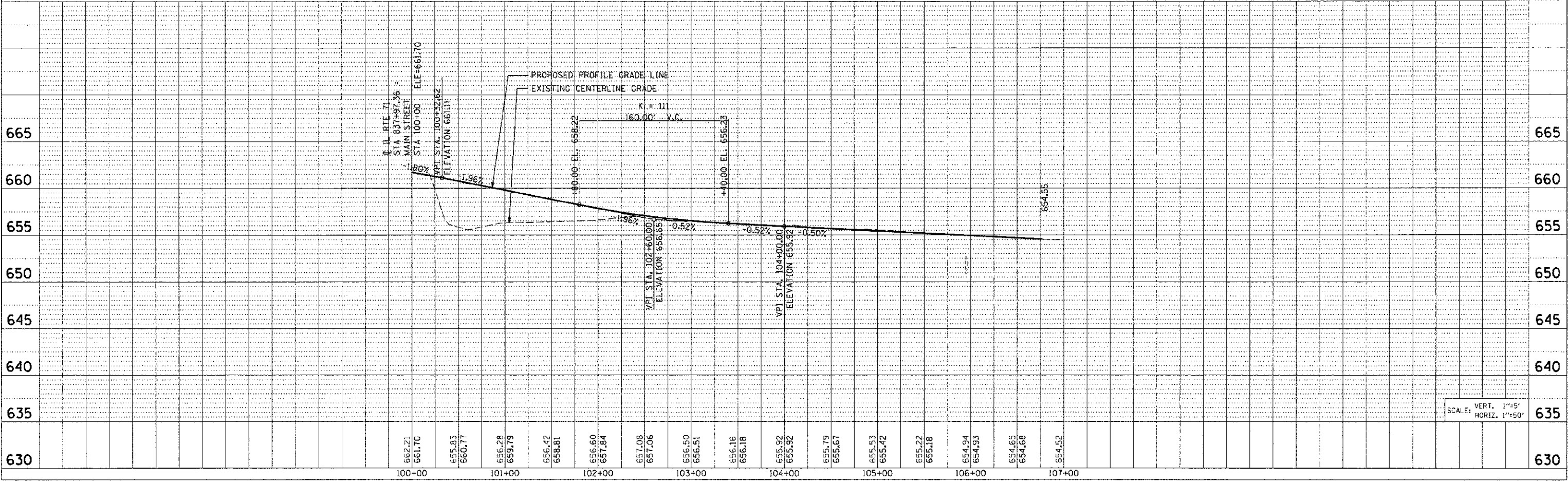
FOR STATION & OFFSET CALLOUTS AT NEW ROAD TAPERS AND RADII SEE INTERSECTION DETAIL SHEETS 330 TO 333

PROP. CURVE NO. 7  
 PI STA. = 102+47.81  
 $\Delta = 59^{\circ} 06' 49''$  (RT)  
 $D = 22^{\circ} 55' 06''$   
 $R = 250.00'$   
 $T = 141.77'$   
 $L = 257.93'$   
 $E = 37.40'$   
 $e = 2\%$   
 $T.R. = 40'$   
 $S.E. RUN = 40'$   
 $P.C. STA. = 101+06.04$   
 $P.T. STA. = 103+63.97$

PROP. CURVE NO. 8  
 PI STA. = 104+93.54  
 $\Delta = 5^{\circ} 42' 09''$  (RT)  
 $D = 2^{\circ} 23' 14''$   
 $R = 2,400.00'$   
 $T = 119.53'$   
 $L = 238.87'$   
 $E = 2.97'$   
 $e = \text{MATCH EXISTING}$   
 $T.R. = N/A$   
 $S.E. RUN = N/A$   
 $P.C. STA. = 103+74.00$   
 $P.T. STA. = 106+12.87$



STA. 837+97.36 (IL ROUTE 71) =  
 STA. 100+00.00 (MAIN STREET)



TUG PROJ. #2105814  
 PLOT DATE 7/25/2012  
 FILE NAME p:\envi\11\_06a\_cist3\worksp\phase 11\PL17113.dgn